

INSIDE

Letters
pg 2

Outdoors
pg 4

SLDC/CCC News
pg 6

Going Green
pg 8

An Opinion
pg 10

Historical
Footnote
pg 17

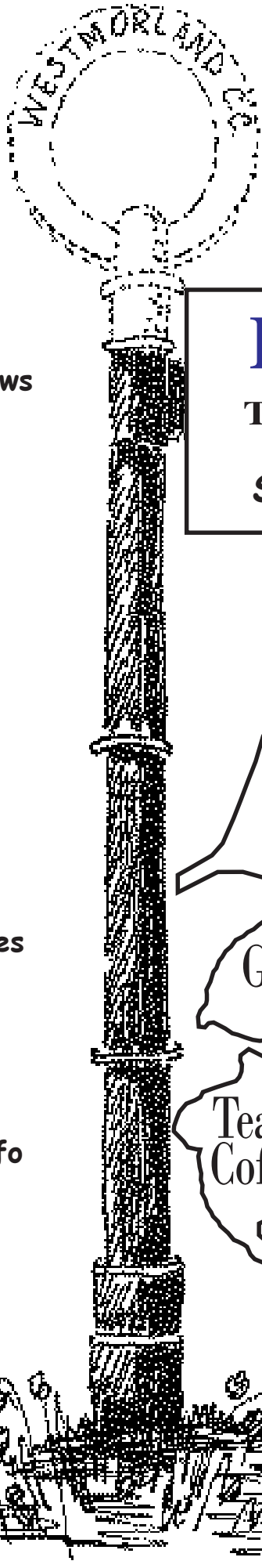
Focus on...
pg 18

Church Updates
pg 20

Editorial
pg 26

Community Info
pg 27

What's On?
pg 24, 25 &
back page



COFFEE MORNING

in aid of MACMILLAN NURSES

Friday 28 September

10 a.m. to 12 noon



Barker House, Neddy Hill, Burton

Entry £1 - cake stall, raffle etc

please come and support us

BURTON NEWS
THE VILLAGE NEWSLETTER
September 2007 Issue 163

**BMH
AUTUMN
FAIR**

Woodcraft

Books

Games

Bacon Butties

Tea & Coffee

Home Crafts

Plants

Saturday 29
September
10am -12noon

Help keep BMH
going

So join us there !



Burton-in-Kendal Educational Foundation Cumbria

If you are about to start Sixth Form Studies or College or University, you may be eligible for a small grant.

Small grants are available to 6th Form and further education students living and educated for at least 2 years in the parishes of Burton, Holme, Preston Patrick and Holmescales, Beetham, Storth, Arnside, Ulpha, Witherslack and Meathop, Cumbria.

Further details and application form from The Clerk, Liz Falkingham, tel: 01524 782302

Dear BN

Nov 5 all year round

Problem: A number of people are now querying the growing problem of their bedrooms and houses smelling of acrid bonfire smoke at bedtime and throughout the night. A very unpleasant experience.

Incidence of Bonfires: 1-3 times per week. This week so far, it has changed to 3 nights running: Tuesday 7 to Thursday 9 August.

Area Involved: Western end of village

Questions for Bonfire Maker:

1. Why do you need to have bonfires at all? Please note that the SLDC remove garden waste regularly and will provide as many green bins as you wish. It is odd that there was a green collection on the morning on Tuesday 7 August and yet that same night there was a big bonfire which lasted until the early hours of the morning.
2. What are you burning? The smell is acrid and unpleasant. Are you really burning garden waste or are you polluting us with something that should not be burnt in a garden at all?
3. Why are you burning on such a regular basis and with what looks like an escalatory pattern? You must be aware that both day and night burning are polluting and anti-social. As there are other methods of waste disposal this does lead to questions about what is really being burnt.

Please stop the bonfires, the village one of Nov 5 is all Burton needs. Your bonfires are unpleasant and anti-social. It would be good to be able to sleep without the foul smell.

Alison Murphy, Morewood Drive, Burton

BURTON BUTCHERS & BAKERS

CHESTER HOUSE, MAIN STREET,
BURTON. Tel : 01524 781219

BEST QUALITY LOCAL BEEF,
PORK & LAMB

AWARD WINNING SAUSAGES &
DRY CURED BACON

TRADITIONAL HOME MADE PIES,
PASTIES, CAKES & QUICHES

FRESH BREAD AVAILABLE DAILY

**PLEASE ORDER TO AVOID
DISAPPOINTMENT**

Please would readers note that letters for these pages must include a valid name & address. This can be with-held from publication on request. We will not publish any anonymous letters, or material which, in the opinion of the Editorial Committee, is of an offensive or defamatory nature. BN reserves the right to edit letters & articles in the interests of magazine space.

31st Annual Onion Show Sunday 7 October Kings Arms, Burton

Classes

1. 3 Dressed Onions
2. 3 Leeks
3. 3 Onion Sets
4. 2 Cabbages
5. 2 Cauliflowers
6. 3 Beetroot
7. 3 Carrots
8. 3 Salad Veg. (1 of Each)
9. Collection of 3 vegetables(1 of each)
10. Collection of 5 vegetables
11. Heaviest Onion
12. 5 Dessert Apples
13. 5 Cooking Apples
14. Pot Plant
15. Vase of Flowers
16. Vase of Dahlias
17. 3 Chrysanthemums
18. Chocolate Cake
19. Fruit Pie
20. Loaf of Bread – any type
21. Cherry Cake
22. Tray Bake - any type
23. 6 Shortbread Biscuits



Children's Classes: Years up to 2 Years 3-6
Animal made from Vegetables
Miniature Garden
Onion Show Picture (A4)



Entries: in from 10.00am to 12.00noon

30p each, 4 for £1. Children free

Auction commences 2.00pm onwards

£50 Draw, Auction of Promises, Raffle, Competitions

Children's Entertainer

**Proceeds to
Sports Committee,
Preston Infirmary Radio Therapy Unit Scanner
Appeal, and Burton News.**

New Baby News...



Lowther nee Lancaster

Grandma Sally is delighted to announce the birth of her second grandchild, Eve Olivia, born to Maddie and Simon on 8 August 2007, weighing 7lb 3oz. Love also from John, Emma, David and Jacob, Caroline & Amit, and Great-Grandma.

Barker

Andy and Louise are delighted to announce the arrival of Lola Kate, born on 4 August, and would like to thank everyone for their cards and gifts.

Deerslet Nurseries Garden Plant Centre

Open 7 days a week

Autumn flowering plants and bulbs now in stock.
Suppliers of Cumbrian-made growing media from
Keith Singletons including 40ltr compost at £2.99



Free delivery to Burton & Holme

Tel: 01524 781777

www.deersletnurseries.co.uk



Open for homemade light lunches, soups
and snacks. Why not treat yourself
this summer to a cream tea!

OPEN DAILY 10am - 4pm

Tel: 01524 782410

OUTDOORS

Every conceivable thing seems to happen at Trowbarrow Quarry, across the road from Leighton Moss. Everything except quarrying. That finished in 1957. What the men left was a colossal arena of limestone, hewn out of the west side of a wooded hill. It's more than a hundred feet high on the east side, half that on the west; seventy or eighty yards across and more than quarter of a mile long from the entrance near the Silverdale road to the headwall at the north end.

One afternoon a few weeks ago strange grunts and thuds were coming from the trees below what climbers call Red Wall - a weird, bulging, soapy cliff where I've never got more than twenty feet above the ground. When I went to see, I found a Polish climber sat there, reading a book and listening to his iPod, between spasms of hurling himself at the rock and falling onto a piece of old mattress. He lived in Darlington and misses his old life in the Lake District.

The week before, Anne and I (and Klipper the lurcher) came upon a couple at the north end, which is a peaceful haven screened by young birches and

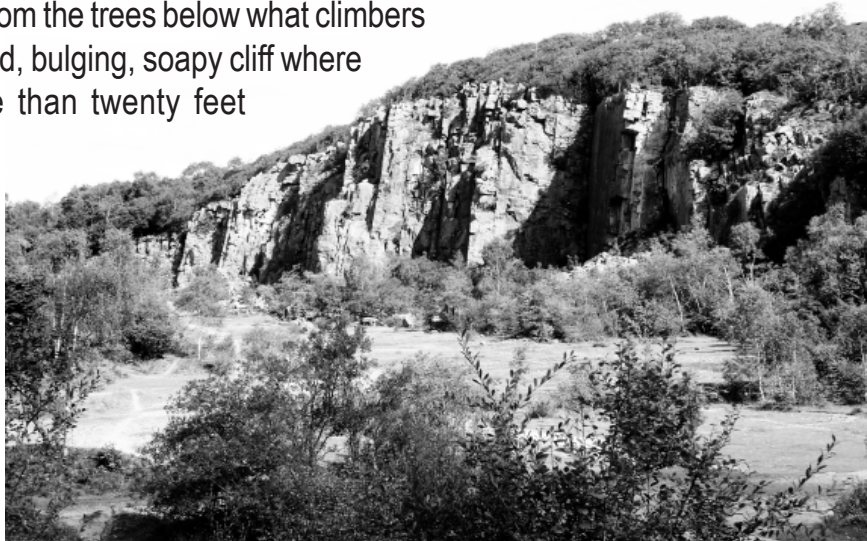


Photo: Edward Ellis © 2007

sallows. They were intent on a buddleia and seemed to be making notes. The man explained that his father took a monthly butterfly census and had broken his leg, so they were standing in for him. Superb Red Admirals, Peacocks, and a High Brown Fritillary were sipping from the purple racemes. 'Ah well,' the man said presently, 'we'd better stop feasting our eyes on this wonderful site and go off to one of the places where you hardly see anything at all.'

I wrote last year about talking to a geologist below the Main (east) Wall. He was supervising a Czech student who was abseiling down the rockface to measure the slow clockwise collapse of its outer layer. Often small parties walk through being lectured about the flowers,

the rocks, and their history.

One winter day a Sunshine coach came in by the track from the west and disabled people got out in wheelchairs and sat for a time enjoying the mild gold sunlight.

Dogs of all sorts come prancing or toddling through, and now and again a pair of determined walkers with rucksacks and guide booklets. One afternoon a couple of them came up to me and said, 'Do we look as lost as we feel? Can you tell us how to get to Arnside?'

Dr. Mark Mullineaux	
Personal Training and Conditioning Service	<i>NSCA and YMCA Certified</i>
	<i>Full Bodystat® and kinetic chain analysis</i>
	07866 144013 mark@ptcs.info www.ptconline.com
<i>National Register of Personal Trainers</i>	

M I C K		L O R D
HOLME BUILDING SERVICES LTD		
<u>All aspects of building work undertaken</u> <u>No job too small, so call</u> Tel:- 01524 782472 Mobile:- 07977 093070		
1, Oxlands, Holme, Lancs, LA6 1RG		

I knew the feeling. When I first went there with my son Pete, in the spring of 1974, to try and find the rock-climbs, we had no idea of the way and staggered about for a while among thorny scrub and cindery tracks between Red Bridge and the quarry while the upper thirty feet of a sheer-looking cliff grinned balefully at us from beyond the woods.

From April onwards, as you sit on a rock or tree-stump on the east rim, you'd be unlucky not to hear a bittern booming from Leighton Moss half a mile away. Three months ago I met two men up there with their binoculars trained on Hawes Water Moss to the west-north-west. They were watching a marsh harrier hunting among the reedbeds. When I mentioned seeing a young osprey, on its way back to Africa one October twenty-five years ago, perched on an oak at the water's edge on Leighton Moss, they told me it was known as the Osprey Tree because it's a regular station for the migrating birds.



Photo: Edward Ellis © 2007

The quarry is now a Local Nature Reserve. The plus side is that there are now two fine information boards, which have photos of quarrymen of the last century and tell you, for example, that Trowbarrow was the source of the stone that was mixed with slag from Carnforth ironworks to make an amalgam called

quarrite. It was used to surface Blackpool promenade. The minus side is that the powers-that-be have put up silly fences with notices like 'DANGER CLIFF EDGE'. In spite of such officialdom Trowbarrow has kept its own rugged character, made up of nature at its steepest and labour at its hardest.

Now that I go there to walk, not climb, the stretching vista along the quarry keeps looking to me like the perspective of life itself. Tiny people at the far end might be your own earlier selves, starting out on your journey. It's also as though you could look down a telescope at the past, when the dint of hammers on drills could be heard, and the smiting of a sheet of metal to warn that blasting was about to happen. And it's like seeing film of your own recent past spooling through once again. Some of my children grew up here, most urgently when my youngest, Neil, decided to climb solo up a Hard Very Severe route called Assegai. At the delicate crux seventy feet up, where you must change from sideways to upward movement, he felt he was

losing it and yelled out 'DAD!!!' He got up it, though, he didn't fall and shatter himself, and from that time on he always called me 'Dave', no longer 'DAD'.

David Craig



Agricultural Contractor

Jobs you haven't the time or the energy to complete yourself? Costly tools needing hiring to do the work?

Contact Graeme Woods for

- Hedge Laying
- All types of Fencing
- Mini Digger work
- Chainsaw work
- General farm/building maintenance

Mower and small square bailer, tractor and trailer

VAT registered. References available

Tel : 07887 623580 or 01524 782250

Burton Out of School Club for all your Out of School Childcare needs

Monday to Friday

7.30am - 9am £3.00 per session

3.15pm - 6pm £6.50 per session

Telephone Nicola or Ester on

07952 949882

for information and bookings

**Affiliated to Burton Pre School
(Registered charity no. 517138)**

Council News from
South Lakeland District &
Cumbria County Councillor
R.K. Bingham

The Smithy, Ackenthaite,
Milnthorpe, Cumbria, LA7 7DH

Tel: 015395 63694

e-mail: roger.bingham@cumbriacc.gov.uk



Roger Reports On....

No Change For Cumbria!

The BIG NEWS at the end of July was that the government has decided not to include Cumbria in its plans for Unitary Authorities. As you will have gathered from my previous reports I was not keen on the idea on account of the great distances and diverse communities in what is England's second largest county - which compels me even in the holiday season to drive 60 miles to Carlisle several times a week. Also abolishing District Councils would have removed two thirds of the people's representatives. Although the County Council put forward a positive scheme for a Unitary Authority it must be remembered that the proposals stemmed from a government White Paper which was published only after the 2006 local elections and just a year following the General Election in which the issue was not raised at all - so no one had a chance to vote on any possible changes. I suppose it would be too much to expect Whitehall to reimburse the seven Cumbrian authorities for all the time and expense caused by the abortive plans. On the other hand some benefits should follow from all the research into how we can integrate all Council services. A good example, because it is so costly, is waste collection which is done by SLDC and waste disposal which is done by Cumbria.

Council-Speak

In the context of change I have come across several new 'council-speak' terms. Last year it was 'silo' - meaning not sharing activities between various services. Now we have 'de-layering' for integrating services by, for instance, having libraries, post and benefits offices, tourist and public information and banks all in one building which would help us to 'place-shape' by supporting community life. Not that this is always easy. Hence at Great Broughton a 'static' library has become unviable precisely because it shares premises with a school, which sounds sensible until one realises that because of 'child protection procedures' the library cannot be open during school hours because adults might have to cross the playground. Meanwhile, I am still seeking ways of having a Library Link in either Burton or Holme. There are also plans for the Mobile Library to wait for half an hour in a village rather than have several stopping points of only a few minutes. Even so rural library provision is poor compared to the towns. Almost every body in Carlisle is within one and a half miles of a Library and within three miles of the County's biggest library. Burton users are at least five miles from either Milnthorpe or Kirkby Lonsdale Libraries but at least unlike neighbouring Lancashire we haven't closed any local libraries. I have also forwarded several complaints about Kendal Library's not opening on Saturday until 10am and have suggested that 9am opening might be restored by closing for an hour at a less busy period.

Nuclear Issues

Despite the official August break, I and the other nine members of the Cumbria Cabinet have been deeply

HALE GARAGE CO



(Practical Automobile Engineers)
Established over 60 years

Main A6 Road, Hale

New & Used Car Sales Service & Repairs

Bosch KTS Computerised Diagnostics Equipment

Petrol & Diesel MOT Testing. Body Repairs, Tyres

Batteries, Exhausts & all your Motoring needs

Free collection or loan car service



015395 62173 / 62839

Aches and pains from everyday life or after accidents or operations, sports or exercise injuries can affect your lifestyle

physio4u

can help you to return to a full and active lifestyle

Call Diane on 07947 727 533 for advice or to book an appointment

Situated at Pure Leisure,
Lakeland Leisure Village, and Borwick

involved with big strategic issues including the so called 'Energy Coast for West Cumbria. This is based around the nuclear reprocessing and disposal industry which employs directly 15,000 people and accounts for half Cumbria's GVA. Though I naturally want all parts of Cumbria to be prosperous, I worry about the environmental effects. Apart from suggestions about nuclear dangers, I believe that lack of sensitivity for the superb landscape could be counter-productive to our efforts to promote heritage and cultural tourism. On the other hand the new University of Cumbria which started on the first of August plans to base a science capital around the nuclear area and also to establish an international outdoor activities study and research facility at the University's Newton Rigg campus near Penrith. It would be equivalent to the world class Sports Science faculties at Loughborough University.

Local Health

The Cabinet also received a lengthy presentation from an NHS chief executive about our local health facilities. The current trend is to base more care and treatment in GP's surgeries which would expand so that, for instance, bone fractures could be diagnosed and set locally rather than in an A and E unit. They were doing this 65 years ago at Stoneleigh Surgery, Milnthorpe where my father worked, and they had their own X-Ray which they don't have now. Incidentally the NHS official while stressing the importance of health education said that a quarter of all children at Furness General were admitted because of constipation. We were also told that the Patients Forums 'had not been a success' but, sadly, no promises were made about the return of 'my' old South Cumbria Community Health Council.

THE CREATURE COMFORTS CAFE

at the LAKELAND WILDLIFE OASIS

is open daily from 10.00 for drinks, snacks and a wide variety of hot and cold food including

ALL-DAY BREAKFAST
SANDWICHES :: PANINIS
JACKET POTATOES :: BURGERS
VEGETARIAN MEALS
HOME-MADE CAKES

Phone 015395 63027
www.wildlifoasis.co.uk



Carnforth Postcode Confusion

The tragic deaths of four men in the helicopter disaster at Gatebeck, which is in my Council 'patch', has once more alerted me to the difficulties caused by our Carnforth Postcode. While at the crash scene I spent a lot of time explaining to the media that a 'Carnforth helicopter' might have come from a dozen different places in an area straggling two counties.

Potholes & Patches in Roads

In between the monsoons I have continued my nitty-gritty surveys and have told CAPITA that there are 197 road patches in the Main Street from Green Dragon to Church Stile including 200 yard long trench patches, three bad potholes, several wonky 'person access' holes especially near the Memorial Hall, very bad pavement surfaces by the Church, Church Bank and Green Cross - all in addition to the potholes on Vicarage Lane, Boon Town, Neddy Hill and the worn tarmac all the way from Junction 36 along the A6070 - and every one will tell me this is not the half of them. So, as always, please keep me informed. Meanwhile let us hope for an Indian Summer. Best wishes

Roger

I am bringing out my ninth local book in September. It is *Memories of Heversham - a look back at an historic South Lakeland Village*. It will have over 300 photos/illustrations and a text of 30,000 words. The price is £10 and proceeds are being donated to Heversham and Milnthorpe Churches. I had intended to compile an Anthology of my Burton *Historical Footnotes* at the same time but regret that this hasn't been possible - but all being well I hope to do so next year.

MO WITHAM

*Painting
Decorating*

Any Size of Job
Completed To YOUR
Satisfaction

**PHONE: BURTON IN KENDAL
01524 781447**

Going Green - Sept '07

The Diary of an Eco-Worrier

"Why did that car just throw coffee at Dad?" asks one of the Carboncopies as we head out of Bridgwater. Carbonlite wipes coffee off his face and jersey as we crunch over the now empty styrene coffee cup lobbed from the window of a Ford Fiesta boom-box. If he had the energy to sprint and catch the youths, I think he'd find a new use for his penknife, slicing tyres and scratching go-faster stripes. "Maybe they thought we were thirsty?" I tell my son lightly, but inside I'm sighing. Now Carbonlite has a new platform for one of his rants.

Two weeks in to our cycle tour 'holiday' of Britain, he's quickly become the anti-carist; a motor-hating bicycle vigilante. And the worst thing about it is, I can see he has a point. I pedal on, knowing he is fuming away to himself. Not just at jobs who think it's a laugh to chuck coffee at cyclists, but at all the cars, lorries, campervans and caravans that cut us up, stare-eye us, beep at us or joke 'Can't you go any faster?' as they pass us on the hills. OK, I admit not everyone has been so negative; the long distance lorry drivers have obviously had training and give us a wide berth. Campervans carrying bikes wave as they overtake, and everyone stops for a chat when we stop to refuel at the supermarket or campsite.

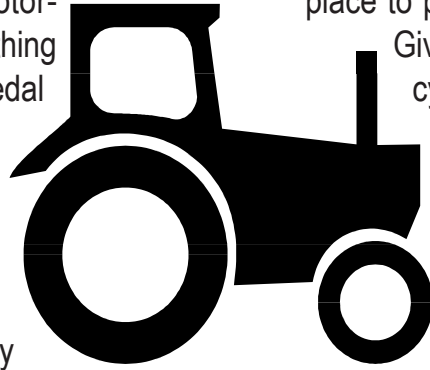
On our way into Bristol, four drug-eyed teenagers even put their spliffs out to lend a hand and get us around

some difficult gates, but most motorists prefer to watch the show from the safety of their tin cocoon. Traffic is not only choking up Carbonlite but it's choking this country.

South of Bristol, we stop briefly in the pretty village of Chew Magna. The volume of cars speeding down single track lanes to get quickly to the village traffic jam is unbelievable; and parked cars, vans and traffic queues make it hard to negotiate our way through the village. It's sad to see once quiet rural environments strangled like this. And cyclists are second class citizens: given cycle routes and facilities that never match those given over to the car.

In the Tesco car park in Taunton we struggle to find a place to park our bikes to do the weekly shop.

Give them their due there is a signposted cycle path, but there are only spaces for twenty cycles while the car park must have spaces for five hundred plus cars. Once we've parked our bikes, they are obviously something of an inconvenience to those trying to get their trolleys back to their cars.



In the twenty years I've been cycling, I've never classed myself as a cyclist, more a lass on a bike. A fair-weather biker who scuttles back to her car when the heavens open, but even I can see we've given too much of our country to the car. Just look at the swathes of roads, eating into the countryside with each improvement and widening scheme, the acres and acres of car parks in towns, cities and shopping centres. And all so we can

Jan's Pantry

Mobile Outside Catering for all Occasions
Barbecues • Weddings • Christenings • Parties etc.

A fully qualified cook at your fingertips



For enquiries call
01524 781904 or
07855 202124

*Your Celebration Cakes
can be done too*

Astarte Web Design

Affordable, effective web design & maintenance

**We can build & host your website
for as little as £150**

**UK Domain Names from £10 for 2yrs
Web Hosting from £60 pa**



Contact Anne to find out more

phone: **01524 781306**
e-mail: **awd@yobunny.co.uk**
www.yobunny.co.uk/astarte

be free to travel wherever we want whenever we want.
Does no-one see the price of this freedom?

We follow the cycle path on the M5 road bridge across the River Avon, just yards from the deafening noise of thousands and thousands of vehicles going nowhere on important business, while we try to pick our way along a cycle route littered with shards of broken indicators, glass, straps and debris from traffic accidents. That's the price we pay.

But sometimes we 'anti-carists' and 'lasses on bikes' get our own back on the motorists. On the way to Chepstow, we ascend a steep narrow hill on a B road. We have no idea the local A road is closed for the day. All we can hear is chugg chugg behind us, as two tractors crawl up the hill in our wake. At the top of the hill we pause and pour ourselves a coffee from our flask as the tractors slowly overtake. Then we count the cars that follow. "One, two three," shout the Carboncopies as they help themselves to a biscuit. "...Seventy one, seventy two, seventy three..." completes Carbonlite with a smile, counting the last of the cars through ten minutes later. Each car waves enthusiastically at us, thinking we are the hold up, unaware that they are now behind two slow-moving John Deeres each pulling a huge trailer. "Shall we invite them to join us for coffee?" says Carbonlite, smiling at a motorist for the first time since the trip began.



Whether you're 8 or 88
you're guaranteed a warm welcome at

TAMMI Birkbeck **Hair Design**

Open Tues - Sat from 9am

Unisex Salon, Dynamic New Team
Free Consultations, Gift Vouchers
Weddings Packages

Appointments not always necessary

Duke Street, Holme 01524 782686

Mike and Zoë welcome you to **The Kings Arms Burton**

Fine selection of Cask Conditioned Ales
Excellent home cooked cuisine served daily

12noon - 2pm : 6pm - 9pm

Monday = Steak Night (8oz Ribeye only £6.95)

Friday = Fish Special (Cod, chips, mushy peas)

Parties catered for

Phone 01524 781409

CLOSEUP



You would have had to walk a bit to find this - or catch a bus perhaps?

It's the "don't call it a bus" shelter at Clawthorpe.



A little different this month, but all the clues are there to help you get it.

Answer and a new one in next month's BN.
Drop us a line if you find this, first one gets a mention (and maybe their picture?) in BN

THE BAY BLIND COMPANY

PLEATED ROLLER ROMAN
VENETIAN VERTICAL
VELUX

Each blind is measured and manufactured individually, and fitted personally
Commercial and Domestic Evenings and Weekends

David or Sandra

Phone/Fax 01524 781149 Mobile 07957 343071

2 Boon Town Burton Carnforth Lancs

An Opinion...

Comments on the goings-on at the
Parish Council

PARISH COUNCIL PRECEPT TO RISE but when will SLDC enable Burton to use its "Quality" Status to full effect?

There was the usual dwindling of PCllr presence for August, four being non-attenders, which left a pretty empty looking array of tables. PCllrs almost always sit in the same chairs and on the same side of the table, a bit like the House of Commons. All that's needed now is a glass screen between them and the Public, and you'd hardly be able to tell the difference.

Another difference would be the lack of Police presence at PC meetings. No Community Police, and no report this month. But as it's the holiday season, possibly all our miscreants have moved to sunnier climes, so there's nothing to report?

Public Forum

Two Burtonians were present to lobby again for a bus shelter. Two were unfortunately absent due to illness. A.O. wishes them both a speedy recovery. It seems they were pleased with her last month's report (doesn't happen very often!). Nevertheless one point has to be cleared up. The BMH cttee has apparently never vetoed the erection of a bus shelter adjacent to the Hall carpark. It was a BENCH they vetoed. One member of the public requested that they should now be approached about the possibility of a bus shelter there. Their rep. undertook to ask, but he didn't seem very hopeful.

It was also pointed out that the PC claim that a bus shelter couldn't be erected in a conservation area was inaccurate. This had been their argument against a bus shelter in the Square. PCllrs were now at pains to compete about their use of buses. If they didn't use them themselves, at least their parents did, they protested.

But no matter what arguments the "public" offered in favour of a more central shelter, the PC seemed determined to concentrate on the possibility of two shelters: one near Glebe Close, and one at Green Dragon. A.O. herself queried the suggestion of putting a shelter on the pavement in the Glebe Close area. What sort of a shelter faces into the prevailing rain-bearing wind? Is there really room for an effective shelter here? PCllrs seem convinced there is.

Someone asked if it was true that bus shelters were deliberately made uncomfortable. Yes, was the reply. This is to deter tramps etc from dossing down in them. So tramps will just have to find somewhere else, and senior citizens will have to put up with sore bottoms, though they may wonder if this is a worthwhile sacrifice. A working party to look into possibilities for shelters was agreed. This will consist of PCllrs Alderson, Hopwood and Isherwood.

The PC Chairman thoughtfully brought discussion about the topic forward in the Agenda, so that lobbyists didn't have a long wait to hear it discussed. Let's hope they get the shelters they need, and that their efforts have been worthwhile.

PLANS DRAWN

McMINN CONSULTANCY SERVICE(N.W.)Ltd
STUART McMINN BSc HND ABEng

PLANNING/BUILDING REGULATION APPROVALS
FOR NEW HOUSES, COMMERCIAL PROPERTIES
EXTENSIONS, ALTERATIONS & REFURBISHMENT

Architectural & Building Surveying Services
Planning Supervisors. Land Surveying
Farm & Barn Regeneration

Tel 01524 781081 Mobile 07729 845147



Burton Based

Driving Instructor

Dual-controls, patient and friendly
Free Theory Training
Pass Plus and Motorway Training
Nervous pupils welcome

Learning for the first time
or coming back to driving

Call Chris on 782645



The Auditor's report (and some other financial stuff)

The Chairman told the Council that the Auditor had now completed his report, and that his findings were by and large satisfactory. He had queried the £5000 surplus of the Council, but the PCllrs felt he hadn't fully understood the need for contingency funds, which were required as a buffer to prevent sudden claims on parish finances that might otherwise plunge us into the red. There was also the possibility of an election of new PCllrs next year, and the PC would be required to bear a £500 cost.

A.O. will have to apologise here, as she freely admits to being rubbish on finance, so those with a financial turn of mind will have to check the figures on the Parish notice-board. Warning was given that the Parish precept for householders will increase next year. The example given was an annual increase of £2 for a D-Band property

The "Q" Question

It was somewhere at this point that A.O. asked what concessions the Parish Council was enjoying now it had achieved Quality Status (at some financial cost to Burtonians!). The reply was disappointing and may come as a surprise. NONE, so far. This we were told, is because SLDC are "dragging their feet" about signing our charter, though Copeland and a few other District Councils have done so. Perhaps our District Councillor could push our cause at one or two of his Committee meetings? A.O. ponders. Burton PC has proudly, and with some justification, displayed its Q on documents. Yet up to now it seems it's meaningless. This must

surely be a source of frustration for all who made the effort to achieve the status.

Reports

1. Plain Quarry

So far no beasts have been put to graze there. After representations by PCllr Hopwood, it has been agreed that 6-8 cattle would be grazed for a trial period in the Dalton Crag area. This is a far lower number than had been "threatened". Other repairs and improvements have been, and are in the process of being made., including filling in the potholes at the entrance to the carpark.

2.Sustainability Fund

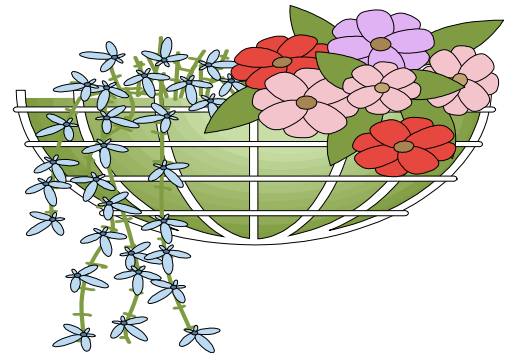
This has been augmented by £85,000. it is planned to spend it on dipping ponds, coppicing, walling etc.

3. The School Playing Field

The drainage of the field, and the possibilities of levelling were discussed.

As the hands of the clock moved towards 9pm, the pace of the meeting seemed to gather momentum. It was a case of "goodnight all," and out again into the darkness.

A.S.



The Honey Tree Chinese Restaurant 293 Marine Road Central, Morecambe

Open 7 days a week for lunch
and evening meals

**Modern authentic Chinese cuisine
cooked fresh to order using
only fresh ingredients**

**CHINESE BANQUET & HAPPY HOUR
DELICIOUS DIM SUM MENU**

Tel: (01524) 423860 or 420944

J.C. DERBYSHIRE

**BUILDING AND LANDSCAPING
TRADITIONAL STONEMWORK
SPECIALIST**

**15 ST JAMES DRIVE
BURTON-IN-KENDAL**

**TEL: 01524 784840
MOB: 07967 092465**



BURTON AMATEUR DRAMATIC SOCIETY

BADS NEWS

I hope everyone has now put BADS Murder Mystery Night - November 23 & 24 firmly in the diary as last year's event proved so popular, no doubt tickets will fly off the shelves as soon as they go on sale.

Last year people really embraced the concept of a real village entertainment with something for everyone. We had families, friends, neighbours, groups of mums having a girls' night out, grandparents, even teenagers.

We entertained people from Penrith and Bolton and Arnside! People brought nibbles and wine, and I'm sure I spotted a table decoration and somebody in their slippers. There were teams of 10 and teams of 2 and people who came on their own made new friends by joining up as a team. Everyone had a great night out, and we've made you wait 18 months before you could do it again.



This year I wanted to add another dimension, we didn't just want to do the same again so the play is set in the late Edwardian period soon after the tragic sinking of the Titanic. The action takes place in the 1st Class (of course, nothing less for Burton) passenger lounge on board a cruise ship. So there you have it, the cast will all be in period costume so if you would like to, why not come in costume too, then you can be fellow passengers aboard ship. Of course dressing up is not compulsory and we promise not to kill any of you, there will be only one murder each night, but might it not be fun?

I heard that all the best directors: Spielberg, Hitchcock, Drinkwater, King and Murphy, do lots of research before undertaking a play - to get under its skin, to bring out the best bits to really understand what they are producing, so following in their footsteps purely for research you understand, by the time you read this I will be cruising somewhere in the Caribbean - but will be back in time for the play reading on 13 September. If you would like a go at treading the boards come along then and meet the company, you will of course be sworn to secrecy, we give out prizes you know!

Tickets will be on sale from Thursday 1 November and every Sunday and Thursday after that in the Memorial

Hall north end foyer from 7.30-8pm until Thursday 22 November or from any BADS member, you know who we are, or me on 781498. Remember you do need to book as we need to know numbers for Jan's delicious hot pot supper.

Play reading 13 September, Club Room BMH 7.30pm

Alyson Yates

Burton Ladies Rounders

After a fantastic season with many wins, we would like to celebrate with a meal out at the Kings Arms on Thursday 13 September.

If you would like to come please let Louise know asap.
Tel: 01524 782282 or 07912 750340

Paul Driver

Building Services



**New Builds & Conversions :: Extensions & Alterations
Stone & Block Work :: Roofing :: Ground Work
Paths & Driveways :: Mini Digger Hire**

Tel: 015242 63044 Mob: 07990 862063

BURTON TAXI



**AIR & SEA PORTS / HOSPITAL VISITS
SHOPPING TRIPS & PUB RUNS**

For a reliable service, please phone

MICK BARKER

01524 782842 / 0781 4967103

Burton Allstars Charity Gig



I, like many others in the village, recently received a letter from the "Rosemere Cancer Foundation" based at the Royal Preston Hospital. Which, to cut a long story short, asked for a donation towards a new machine for Radiotherapy treatment. This machine, an I G R T, is £650,000 and sadly the NHS cannot afford one, well not yet anyway. This machine will improve the treatment of all types of Cancer. So they have started an appeal to raise the money to buy one now, the "Rosemere Ray of Hope Appeal."

Well, you know what's going to happen, the Allstars are doing a gig to raise some money towards the target of £650,000 and make a dent, however small, towards that total. The gig will be on November 3, that's a Saturday, for one night only. The tickets will be £10 pounds each, yes I know that's £2 more than we

normally charge, but ALL the ticket money plus any other monies we can raise, through possible donations, raffle, etc will go to the appeal. It will be a "bring your own" night, drinks, food whatever, and there will only be 150 tickets available, yes, only 150. I've just had a thought, if we charge £4,333.00 per ticket we could buy the machine outright. OK, forget it!

So you have had fair warning, a couple of months to save up, find your dancing shoes, the platform soles and the flares, or is that going bit to far, yes I thought as much. If for any reason you can't go and would like to give a donation, you can leave it with Bryn at the Butchers, or drop it at my home, 11 Vicarage Close. Whatever monies we receive will be given as a donation to the fund from the people of Burton-in-Kendal.

More info next month re ticket sales, etc.

Dave Williamson



Ian Donoghue **Quality Catch**

Finest Fresh Fish & Seafood

*In the Market Square every Tuesday
from 1.45 p.m. - 2.15 p.m.*

*or if you would like me to call ring
01253 857683 or 07816 842797*



Fully Qualified Childcare Staff

For Pre-School Children
Aged 3 months To 4 Years

Open daily Monday to Friday 7.30am - 6pm

Mobile Childcare Services available
For weddings, christenings, parties etc

SPOTTED DOG CHILDREN'S CENTRE
CLAWTHORPE HALL BUSINESS CENTRE
Tel : 01524 784321



**DOMESTIC
COMMERCIAL & INDUSTRIAL
ELECTRICIANS
& CONTRACTORS**

All aspects of electrical works
carried out to 16th edition BS7671
Covering Lancaster, Morecambe
& surrounding areas

01524 62881

Mobile: 07775 833 114



DRY FUSION™
with Bactoshield

Cleaner, Drier, Protected Carpets
in under 30 minutes

Call Gary on 01524 782857

Burton Bowling Club

As it is getting towards the end of the season, I thought it was time for an update on our fortunes this year.

Although it has at times been a struggle with only having 24 playing members, 2007 has been a fairly successful season. We once again have gained promotion in the Morecambe league, so next year we will be in division 5. That's 2 successive promotions in 2 years! In the Kendal League, we are still in the danger zone at the lower end of division 2, but have a good chance of survival.

The rural league team has fared better, and currently top the table with just a couple of games to go. Congratulations to all the children from Burton Morewood school who recently held a competition at the club, and in particular to the winner, Finlay Rooney, who beat Harry Still in the final. Also well done to the 2 losing semi-finalists, April Gladrey & Kerry Street. By all accounts an enjoyable few weeks was had by all and I hope this is something we can continue for years to come.

Finally, on a personal note, I would like to thank every one at the club in making my first year as chairman at pleasurable one, in particular the team captains, the green mowers, all the players and the committee.

Carl Dobson

100 Club Winners

July '30' Carl Dobson !!

Aug '60' Kath Procter

Goad Joinery Ltd

All aspects of joinery including:

Renovation, Doors, Windows, Sky Lights, Flooring
Extensions, Fitted Kitchens, Fitted Bedrooms
Barge Boards & Soffits, Garage Doors
Loft Conversions etc

Trusted Time-Served Joiner

Call for a free estimate, no obligation

Burton in Kendal 01524 782939



REMINDER...

Feed the birds in Summer,
give them fresh water too



Burton-in-Kendal COMMUNITY FIRST RESPONDERS In association with North West Ambulance Service NHS Trust

I do apologise for the long delay in keeping residents of Burton up to date with the First Responder Team,

You will notice from the heading that Cumbria Ambulance Service is now North West Ambulance Service following the Government Guidelines, where Lancashire and Cumbria Ambulance Services have been brought under one NHS Trust. We were promised that this would not affect us as a First Responder Team, but to say we have had no problems in 2007 would be an understatement!

Since the start of this year we at Burton have been running alongside our neighbouring village of Holme and responders from each village now attend calls in both Burton and Holme. This followed a decision by both teams, as we were both so short on the ground during the day when many team members were at work. We also had the problem of training - since the Royal Hotel closed, Burton struggled with a venue,

VermiSell

www.vermisell.co.uk
info@vermisell.co.uk

Fishing Worms - Composting Worms
Mealworms - Wormeries
Wild Bird Food

(Speciality Feeds, Seeds & Feeders)

Composted Manure Mulch

Wormcast Composts

Asparagus Plants & Crowns

Rhubarb Plants & Crowns

Contact Greg: 07843 277920

Sandy Gap Cottage, Clawthorpe

whilst the PCC were kind enough to let us use the Atkinson Room at Church this did not work, as assessments are done out of view of other team members, sitting in Church waiting was not ideal. Therefore all training and assessments are done either at Holme School or the Smithy.

I must stress at this point, that whilst the Teams are running as one, our finances are completely separate. Any donations to Burton First Responders stay in our own funds.

I mentioned the problems that have arisen in 2007 - these have been with Ambulance Control (still in Carlisle for the moment) where we have been sent to inappropriate calls for First Responders, e.g. to attend chest pain on the M6 itself, calls into Capernwray and Borwick (Lancashire) and our sincere apologies to anyone who has dialled 999 and we have either not turned out or turned out too late. This has been due entirely to Ambulance Control and not the Burton Team. NW Ambulance have been asked to apologise themselves, but just seem to pass it off as "technical problems." Problems with the Team have also arisen and our numbers are now down to nine which is just still workable as these nine still turn out on a regular basis - seventeen calls in Burton so far this year and as it is only just approaching September, it goes to show that we are kept busy! We have lost valuable team members, through illness, moving out of the area and politics with the NHS! My sincere thanks to each and every one of them, but a special mention for Lynda with all our love.

One good thing that has come out of all the re-

organisation is that First Responders do have to keep strict updates with their training and assessments. Training is now regularly on a three month basis and assessments six monthly. Team members are now no longer allowed to attend an incident if their assessment is not up to date (although Burton has never had much of a problem with this.)

So sorry for this long-winded report, I do have to keep you up to date as it is your donations that keep us running. You may have guessed that we do need about three more members to make our numbers up to a good team number of about twelve. You need to be 18 or over (no upper age limit), willing to train locally in basic and advanced life support, use of oxygen and have a Criminal Records Bureau check (if you already have one then an enhancement is needed), you need no medical knowledge whatsoever. Our team already includes a coronary care nurse, housewives, coal man, plasterer, office workers and the retired. We just ask that you have an empathy with people who are sometimes frightened, in pain and usually have distressed relatives, who also need reassurance before the paramedics arrive. TLC is all that is required on a large number of our calls.

Finally (at last) our sincere thanks to Mike and Zoë and customers who attended the Casino Night at the Kings, we have received a cheque for £750.

Next assessments for those needed is 7.30 at the Smithy 3 Sept.

Susan Hargreaves
Team / Ambulance Co-ordinator (781273)

COLIN HARPER BUILDING SERVICES

- * alterations
- * plastering
- * patios
- * drainage
- * extensions
- * roofing
- * stonework
- * tiling

**Quality work at competitive prices
Free estimates**

Tel: 01524 781194

Mobile: 07880 925170

39 Trinity Drive, Holme, Carnforth, LA6 1QL

MICHAEL PLATT PLUMBING & HEATING ENGINEER

**Bathrooms Supplied
& Fitted**

**Landlords Gas Safety
Certificate**

All Work Guaranteed

01524 782390

MOBILE 07850 472780



Burton Pre School and Family Session news

We hope everyone had a happy and restful summer - even in the absence of the sun for much of the time!

A welcome to all new parents/carers of pre-school children. We hope your time with the Pre-School will be a happy and fruitful one!

There are two items coming up in the immediate future:

Firstly, we are holding a New Parents Evening on Wed 19 Sept. (please see separate ad.) This will be a chance to meet and get to know other parents/carers and also the staff and members of the Committee. It will be very informal and we would love as many people as possible to come - it is a great way to get to feel part of the Pre-School community. It will also be an opportunity to find out more about the running of the Pre-School and how you can become involved in your child's Early Years education yourself, either by joining the Parent Committee or by volunteering to help out in other ways.

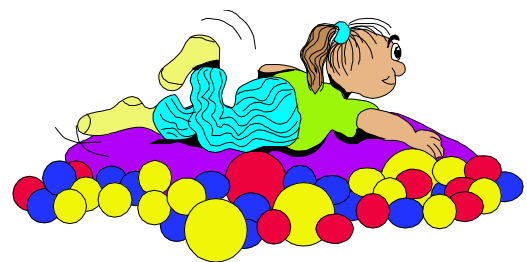
Which leads on to the second item: the Pre-School is run as a charity and therefore has to have an annually elected Committee, which is responsible for fundraising and the general running, alongside the staff. Our AGM will be held on the 27 September (again see separate ad) and we will be electing a new Committee for the coming scholastic year. Please do come along to this, as we are always looking for fresh ideas and enthusiasm and would very much welcome anyone who feels they could contribute in any way - it may be

by coming on to the Committee, or maybe by contributing your time to our fundraising efforts - any input at all would be much appreciated. I should mention that involvement in the Committee could be good for your social life too, as we try to organise nights out etc for ourselves as well! This all also applies of course to parents/carers who already have children in the Pre-School. This could be the year for you to join us and get involved.

One other item, for many years, we have run a Family Session on Wednesday mornings, for babies and toddlers and their carers. It is a nice relaxing chance to get together over a coffee and to meet other carers. We offer an activity for the older children as well as fruit and a drink and we have a separate baby area for the little ones. We are in desperate need of help if we are to keep this valuable service going. If you could contribute some of your time on a regular basis to help run this session, please contact Fenella on 782495 or come along to our first session of the new school year on September 5 at 9.30am to find out more. Many thanks.

Finally, may we wish all our children and their parents/carers a full and happy year.

Fenella Macmillan-Clare
Pre-School Acting Chair



M. LOOKER DECORATING



Interior + Exterior
Painter + Decorator

For free estimates
and advice

Burton 782334
07939 374 145

HOLME GARDEN SERVICES

Kev and Sue Longden

Professional experienced gardeners
RHS trained

All gardening work undertaken
including mowing, lawn care and
specialist pruning

Garden design and planting

Tel: 01524 782928

Mobile: 07748 184623

HISTORICAL FOOTNOTE by Roger Bingham

JOHN KEATS' AWKWARD VISIT TO BURTON, 1818

Until John MacAdam constructed the Turnpike Road (later the A6) through Milnthorpe in the 1820's Burton was on the main route between Kendal and the north and Lancaster and the south. Inevitably Burton must have had many famous visitors. Some we know about like Robert the Bruce in c.1316, Prince Rupert in 1645, Charles II in 1651 and Bonnie Prince Charlie in 1745, all of whom came at the head of armies. But from the opening of the Heronsyke to Eamont Bridge Turnpike (or Toll Road) in c.1752 civilian travellers including some early tourists known as 'Lakers' increased. In 1763 the first stage coach drawn by six horses passed through Burton twice weekly at an estimated speed of six miles per hour. Twenty years later several stage coaches a day changed horses at Burton which was the half way 'stage' between Kendal and Lancaster. In 1829 Parson and White's Directory reported that 'there are in the town several good inns for the accommodation of travellers'. These travellers could have included John Wesley, on horse back, and William and Dorothy Wordsworth, who went by coach. But they did not mention Burton in their voluminous 'journals' so we don't know for certain when or even if they came to the village.

In contrast poet John Keats' visit in 1818 was fully recorded by his travelling companion Charles Brown. They arrived in Westmorland, en route for the Lakes, in the middle of an election campaign in which the Tory Lowther family were running two candidates

Viscount Lowther and Colonel Lowther, sons of the Earl of Lonsdale (known in his dynasty's history as 'The Wicked Earl'), against the radical Whig, Henry Brougham. Unfortunately, upon reaching the first Inn at the south end of the village close to the turnpike gate, Messrs Keats and Brown encountered some good old-fashioned hospitality. Mr Brown recorded 'on our arrival (at Burton), quite ready for dinner we turned into the first Inn, the Green Dragon, and put our petition with the usual phrase of "what could we have?" A voice replied in an instant, and in the gruffest tone, "Nothing, you can have nothing here!" It was the Green Dragon himself, in the shape of a tall, corpulent figure, with the largest face that ever man was blessed with - a face like a target; and none that a starving traveller might be tempted to shoot at. This unfeeling lump went on to tell us his house was full of soldiers, and that he could neither give us food nor a room to sit in'. So they went on to the next Inn: Turning from him into the King's Arms, the landlady there uttered her spleen in a milder strain. She said 'Ah! Gentlemen, the soldiers are upon us! The Lowthers had brought 'em here to be in readiness. There'll be sad work at Appleby...(where the County Parliamentary election results were declared, actually until 1979!)... Dear me! Dear me!-at this election time to have the soldiers upon us, when we ought to be making a bit of money. Not to be able to entertain anybody! There was yesterday - I was forced to turn

continued over the page...



**Dalton Hall
Business Centre
Burton-in-Kendal**
<http://www.daltonhall.co.uk>

Offices To Let

from 400 to 12,000 square feet
All Enquiries 07881 930139
offices@daltonhall.co.uk

CHIROPODIST

HOME VISITS

Ian McCutcheon
MSSCh, Dip. Pod. Med., MBChA

Tel. Burton 781383

Historical Footnote from page 17...

away two parties in their own carriages; for I have not a room to offer, nor bed for anyone'.

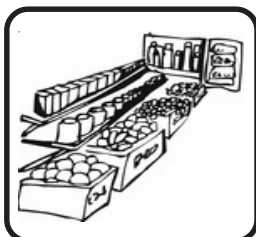
The reason for soldiers being quartered in Burton was that Brougham had recruited the support of the navvies who were currently building the Northern Reaches of the canal. Plied with ale by both sides the mob roistered round Kendal and the canal villages yelling, 'Lowther's Ale but Brougham for ever'. Fortunately, when the Lowthers won there was only a 'small riot so the poet and his companion could make their way peaceably from Burton to the Lakes. Incidentally, this election provided our old County with one lasting reminder in the 'Westmorland Gazette' which first came out to support the Lowthers whose yellow emblem then became the colour of the Westmorland Conservatives who did not go 'true blue' until 1983.



Burton Village Store & Post Office



Euros on Demand
Travel Insurance
EHIC (formerly
E111)
Holiday Phone Card



01524 781828

Focus on... Burton Clubs and Societies

Burton Thistle Football Club (1961 onwards)

Further to last month's article, the club re-started in 1961 following a meeting at Egremont House between Bill Eglin, Arthur Metcalfe and Gordon Crayston. Arthur had just returned from doing his National Service and together with Bill and Gordon was keen to get the local team going again. There were still funds available from the old Football Team days which were passed on with the proviso that the name, Burton Thistle, be retained. That first team fielded the brothers Gordon, David and John Crayston, Bill Eglin, Henry Fawcett, David Holt, brothers Arthur and Ronnie Metcalfe, Peter Morland, Barry Peate and Geoff Wyatt.

It had been a longstanding problem to find a permanent pitch and many farmers in the area were approached. It was Harold Wright, a farmer in Clawthorpe, who came up trumps and offered a field on the edge of the A6070 for £10 per year. The only time it couldn't be used was in 1967 during a Foot and Mouth Outbreak when Bob Mason offered one of his fields down Station Lane. However, that wasn't used too often as a visiting team complained about the slope at one end and on losing insisted on a replay.

The pitch at Curwen Woods, Clawthorpe, ran from east to west but a natural spring rose at the east goal mouth. The goalie, Arthur Metcalfe, remembers standing in 18 inches of water for one game in 1963 but recalls a

Reid & Mason Fine Jewellery

An exciting range of handmade jewellery using
semi-precious stones, freshwater pearls
and sterling silver

www.reidandmason.co.uk

Cressida Mason-Hornby
01524 781 574

match being cancelled only once due to flooding of the pitch. In the 1970s it was decided to turn the playing area around, with goal posts at the north and south ends. The pitch still had to be cleaned and marked up for each home fixture as the field was required for grazing between matches. Today the field is owned by Richard Boddy, who for many years now has generously allowed the club full and exclusive use, so no more getting down with a bucket and spade and sawdust. Indeed without his support it is likely the club would have folded as finding suitable land near the village would be extremely difficult.

Fortunes again improved as they had in the late 1940s and the Westmorland Junior Cup was won in 1968 and also several North Lancashire League titles in the 1960s and 70s. Facilities improved for the players with an extension built especially for their use at the south end of Burton Memorial Hall with showers and changing rooms. There was tea now in the village hall after the match and Arthur Metcalfe's mother and his wife, Margaret took on the task of washing the club strips. Later on when Clawthorpe Hall became a hotel, Martin Stafford remembers the team could just nip over the wall and use the showers there, and no doubt sink a few pints.

In the 1980s and 1990s the club had mixed fortunes but the Reserve Team were Senior Cup winners in their division in 1998-99 and the first team won the Senior Cup in 1989-90. Though having one of their best ever teams, they lost out on many of the big trophies to a club fielding semi-professionals, which was perhaps not in the spirit of the amateur game. However, these

were proud moments for a small team like Burton Thistle to even reach those levels.

There were many talented players: Neil Crayston, Mark Taylor, John Looker, Clive Crayston, Trevor Mattison and Dennis O'Connor amongst them. One of Burton Thistle's top players then was Neil O'Connor, Nocker to his mates, who regularly scored 30 goals a season over his 20-odd year playing career, even incurring a broken nose to the cause. Alan Shipperd was another who was still a top goal scorer even towards the end of his 20-year playing career. Both have sons: Daniel O'Connor and Simon Shipperd, who now play in the team.



Of the current players Steve Mason is the longest serving with 22 years under his belt, and Mark Smith and Derek White both have 20 years. The Recreational Trust facilities are used by the club nowadays while match *post mortems* are carried out at the Longlands Hotel which has sponsored Burton Thistle Football Club for many years, providing the kit and huge support with their fundraising events. Derek White took over as Team Manager this year from Trevor Mattison, and Bryn Jones is currently manager of the Reserve Team while his wife Helen is Secretary for the club. Thanks go to many for their reminiscences in preparing this article but particularly to Arthur Metcalfe and Phil Stockdale. If anyone is interested in getting involved please telephone Bryn or Helen on 01524 735885.

If you would like to feature your own organisation or group in this series, please contact Pat Johnson, on 01524 781277 or e-mail royandpat@gotovisual.com.

BARRIE ATKINSON

TV VIDEO HI-FI

SALES AND SERVICE
PROMPT AND RELIABLE SERVICE

PHONE 015395 60565
OR MOBILE 07944 381986

LONGLANDS

Hotel & Restaurant

Good Food, Fine Ales
Live Entertainment, Great Rooms

LONGLANDS, TEWITFIELD,
NR. CARNFORTH, LANCs, LA6 1JH

01524 781256
WWW.LONGLANDSHOTEL.CO.UK

The Vicar Writes...

A grave question

The world's one unavoidable fact is, ironically, the world's most avoided topic of conversation. I'm talking about death. We act as if it doesn't happen but we all really know that everyone dies. This fact has, sadly, been all too apparent in Burton and Holme this year. We've had significantly more funerals at St. James and Holy Trinity in 2007 compared with recent years. Many of us are hurting over the death of loved ones and dear friends and neighbours. In our grief we want answers to one of the few questions relevant to everyone who has ever lived: what happens to us after we die?

In the next couple of issues we're going to briefly examine what the Bible says about this all important matter. Jesus made many amazing claims about death and heaven and hell. However, before we look at what Jesus taught, I want to explain why I think we should bother listening to him.

Suddhartha Gautama founded Buddhism. He taught about death, and yet he was beaten by it. Mohammed founded Islam. He also taught about death and, of course, it overcame him too. Bertrand Russell was a philosopher and author in the last century and one of the greatest proponents of atheism. He spoke and wrote about death and yet, sadly, he couldn't fight it off either. They were clearly great men with deep insights into life who have influenced millions of people. But here's the problem: they're all dead, so we can't be sure that what they taught about death is reliable.

Jesus is different. He died but returned from the dead. Death did not overcome him – he beat death. His resurrection isn't a fairytale but an actual historical event backed up by compelling evidence. It's one of the unique things about Christianity. I'm not trying to put down other great religious teachers, I'm simply underlining that Jesus has one up on everybody else – he rose from the dead.

To learn about anything, it's best to seek the advice of an expert. If you need help understanding maths the best person to turn to is a maths teacher. Or if you want to learn the piano, the best person to help is an accomplished piano player. Similarly, if you want to know about life after death, the most sensible thing to do is to learn from someone who has died and come through it.

Jesus is the expert on the after-life. The fact that he died and rose again gives credibility and authority to his teaching about death. So what did Jesus the expert teach? More on this next time.

Perhaps you don't want to think about such a depressing subject. But can I encourage you to face the issue and revisit these pages over the next couple of months and I hope you'll agree that death doesn't have to be as depressing as it sounds.

Paul



Notice:

If you would like to request prayer for yourself or for anyone else, please contact Paul on 781391

ST JAMES & HOLY TRINITY CHURCH TELEPHONE NUMBERS

Vicar:	Paul Baxendale	781391
Wardens:	Michael Carr	781283
	Janis Wood	781241
	Trevor Wood	781241
Treasurer:	Rebecca Jackson	782590
Secretary:	George Flanders	781729
Organist:	Kath Mills	732194
Choir Leader:	Kath Mills	732194
Reader:	David Mills	732194

EDWARD DUCKETT & SON

SPECIALIST JOINERS, BUILDERS FUNERAL DIRECTORS

Greenside, Holme, Carnforth,
Lancs. LA6 1PS
Tel: 01524 781232

For funeral arrangements
Tel: 01524 784211

PRIVATE CHAPEL OF REST

September Services

at St James' Burton
& Holy Trinity Holme

Sun 2 September

09.30am Holy Communion Burton
11.00am Holy Communion Holme
06.30pm Evening Church Burton

Sun 9 September

08.00am Holy Communion (BCP) Holme
09.30am Family Service Burton
11.00am Family Service Holme
06.30pm Evening Church Burton

Sun 16 September

(Church Weekend Away at Keswick)
09.30am Holy Communion Burton
11.00am Holy Communion Holme
06.30pm Evening Church Burton

Sun 23 September

09.30am Morning Prayer (BCP) Burton
09.30am Memorial Hall Service Burton
11.00am Morning Prayer Holme
06.30pm Holy Communion Burton

Sun 30 September

11.00am Joint Service Holme
Outdoor Harvest celebration in the grounds of
Holme church (weather permitting) followed by
free harvest lunch.

From the registers:



Funeral and burial:

Robert Burton
3 August

Wedding:

Oliver Frank Parsons & Claire Patterson
18 August

MEET YEALAND QUAKERS

During the week of September 22 - 29 we are joining with Quakers all over the country for "Quaker Week" to let people know who we are and what we do.

Events at Yealand Meeting House
18 Yealand Road, Yealand Conyers, LA5 9SH

Sunday 23: 4.00 - 6.00pm

A cup of tea followed by an hour of words and music.

Wednesday 26: 7.30 - 8.30pm

A vigil for Peace

Thursday 27: 6.00 - 7.00pm

A guided walk around Yealand Village.

Friday 28: 7.30pm

Videos about George Fox and the Quakers.

The Meeting House is always open during the day and there will be an exhibition "Quakers Then and Now".

Our normal Sunday Meetings for Worship are held from 10.30 - 11.30am. Visitors are always welcome.

For more information call: 01524 781601 or 01524 782052 or 01524 732336

Warton Methodist Church

Borwick Lane, Warton

Sunday Service: 10.30am

Whizz Kids :: Creche

(school-age children) (below school-age)

Youth & Family Worker

Bethany Scott

Minister - **Roger Moore**: 01524 65393

Church: 01524 732626

St. Mary's R.C. Church

Yealand Conyers

Mass Times:

Sat 6.00 pm

Sun 9.00 am

Contact: **Fr. J. Bamber**

01524 732943

for further information

A (Very) Watery Tale

Having just received the August edition of B.N. at St. Ives, Cambs., where we are two of about 100 volunteers who are preparing the site for the Inland Waterways Association *National Waterways Festival & Boat Show* over the Bank Holiday weekend, I'm spurred on to produce my promised contribution to the September issue.

A few weeks ago we all had fingers and toes crossed that we would all make it this far in time, as volunteers and their boats were held up by the floods on various rivers en route, and the Festival site itself was under water.

Our narrowboat journey began in May, when we cruised from Carnforth to Preston and accessed the main system via the Ribble Link, which involves eight locks and a stretch of the tidal Ribble and the river Douglas to Tarleton.

The Rufford Arm of the Leeds/Liverpool canal takes you on to the main line at Burscough and thence to Wigan for the long climb over the Pennines to Leeds. This takes about a week and by Leeds we had worked through 97 double locks and 34 swing bridges. Our usual mooring spot at Granary Wharf in Leeds was barred off for the construction of yet more apartment blocks, the city skyline had changed radically since our last visit 3 years ago.

I must admit that the route to St. Ives was the idea of First Mate and Galley Slave, and it turned out to be a



bad idea, but who could have foreseen our June/July weather? From Leeds the Aire & Calder Navigation heads for Castleford and from there onwards there is a likelihood of meeting, or being overtaken by, huge sand and gravel barges. We would actually have met one right on the junction, but traffic lights ensured no catastrophe occurred.

Three more days and we were at Keadby, waiting to be given a time to access the River Trent at the right state of the tide. A 4hr. cruise up the river brings you to Torksey, where most boaters overnight before continuing to Newark, a good place to replenish stores.

We stayed there 2 nights as there is a handy railway station and we spent the second day in Lincoln.

One of our favourite moorings is adjacent to the National Rowing and Slalom courses at Holme Pierrepont, nr. Nottingham, and it was whilst we were there that the rains came and we were unable to proceed. It's an interesting spot and there were services for boaters (water, rubbish disposal and loos), but it was a ¾hr. walk to the nearest shop. On the Sunday we were there 4,500 cyclists, including our daughter and family, set off on a 50-mile sponsored Cycle Ride to Newark and back, as part of National Cycle Week, so we were well-entertained that day.

The following day we managed to cruise for 1½ hrs. to the centre of Nottingham, which is a stretch of canal and this time the moorings were outside Sainsburys – marvellous. By now the River Trent was seriously

"Quality photographs preserve your memories forever"

Lynn Robinson ARPS Photography

Informal, Contemporary, Reportage
Traditional Wedding Photography
Portraits, Family Celebrations and Events

www.lynnrobinsonphotography.co.uk
info@lynnrobinson.co.uk

3, Fern Terrace, Main Street, Burton, LA6 1LW

01524 782279 or 07717 481647

Westmorland Marquee Hire

Corporate • Weddings • Private Parties

"when it has to be right"

Free and comprehensive site visit service
Competitive prices. Clean, smart, modern equipment

01524 – 782 414

www.westmorlandmarqueehire.co.uk

Dalton Hall, Burton-in-Kendal, LA6 1NJ

info@westmorlandmarqueehire.co.uk

Prices start from under £600 for a marquee complete
with flooring and lighting suitable for 60 guests

flooded and we eventually put our boat in a marina and went home for a week.

When we got underway again we had intended to cruise the River Soar through Loughborough and Leicester, but we opted for a safer route via the Trent and Mersey, Coventry and North Oxford Canals to Braunston, one of the best known and busiest junctions on the system. This stretch had all been on single locks: easier for First Mate to operate, but we hit double locks again on the Grand Union Canal to Northampton, or more precisely to Gayton junction, where 17 single locks take boats down to Northampton and the River Nene. This latter had been flooded, but luckily we struck a `window` between two lots of closures.

At Oundle we were invited to the home of Peter & Maddie Wright of Church Stile, whose main home is there and we spent a pleasant day with them. From Peterborough, two days across the Middle Level Navigations brought us to Salter`s Lode Lock, where a short tidal section of the Great Ouse to Denver sluice is controlled by lock-keepers.

The final leg of our route should have been through Ely, but due to a train derailment on a bridge over the river beyond the city, which was to close the river to

navigation for several weeks, we had to backtrack to Denver and go via the New Bedford River, otherwise known as the 100ft. drain, a 20-mile dead-straight tidal waterway which was in flood, making it unsafe and anyway impossible as boats couldn`t have got under the bridges. However, during our enforced stay there we were able to cruise the Little Ouse and the pretty little fens with charming names such as the Wissey and the Lark between Ely and Denver and also visit Downham Market for shopping. After several days a convoy of 8 boats was able to proceed and get back on the Great Ouse, though as time was now short we left out the stretch to Bedford, instead taking the R. Cam to Cambridge and diverting to the delightful Wicken Fen before reporting for duty at St. Ives.

One of the most pleasing aspects of boating is the wildlife encountered, the great-crested grebe is my favourite, with the stripey-necked babies who like to hitch a lift on mum`s back. We often see kingfishers and on the Great Ouse we saw egrets and a seal.

L. & J.B.

Burton Pre-School

Burton Memorial Hall
Acting Chair: Fenella Macmillan-Clare
Pre-School Manager: Nicola Braithwaite



We take children from the age of 2 years including children who are entitled to the Education Grant (over 3 years)

Opening times

	Under 3's	Over 3's
Mon	9.10-11.40am	9.10-11.40am & 11.40am-3pm
Tue	9.10-11.40am	9.10-11.40am
Wed	9.10-11.40am	9.10-11.40am
Thur	9.10-11.40am	9.10-11.40am
Fri	9.10-11.40am	9.10-11.40am & 11.40am-3pm

For more information please phone 07759 245984

*Fully qualified staff. Social Services registered.
Members of the Pre-School Learning Alliance.
OFSTED recommended.
Registered charity 517138*

ELMSFIELD GARAGE

ELMSFIELD PARK
HOLME

SERVICING - REPAIRS
PRE-MOTS

MOWERS - STRIMMERS - HEDGETRIMMERS - CHAINSAWS
SERVICED - REPAIRED AND SHARPENED

RING EDDIE
TEL / FAX : 015395 64516
MOBILE : 07785 521635

Barton Tech Support

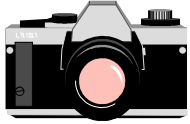
For all your computer needs

- * **upgrades**
- * **training**
- * **networking**
- * **internet (including broadband)**
- * **repairs**
- * **security**
- * **virus removal**

Call Barry on 01524 781306
E-Mail bts@yobunny.co.uk

What's On?

See back page for more village events & activities



Holme & District Photographic Society

Following on from its successful Spring Exhibition held in the Burton Memorial Hall, the Society will be holding its second exhibition of the year at Holme Village Hall on Saturday 29 September 10am to 5pm & Sunday 30 September 11am to 3pm

The Exhibition will include a selection of photographs and prints including "Holme Past & Present". Many items will be for sale and refreshments will be available. All welcome.



Holme & District Photographic Society

September Meetings

- Fri 7 Potholing, Trevor Hughes, Raffle
Entries for Jessops' Open
- Fri 21 L&CPU Slides Year 2
- Fri 28 Jessops' Open Competition
- Sat 28 Exhibition 10am - 5pm
- Sun 29 Exhibition 11am - 3pm

All meetings at Holme Village Hall at 8pm
except Exhibition dates - see times above

Visitors welcome at all meetings

*For membership details contact
Boots Weatherill
01524 784905*

Watercolour Painting Classes

Starting Friday 21 September
Burton Memorial Hall, Club Room

INTERMEDIATES

9.30am-12.00pm

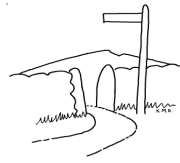
BEGINNERS

1pm-3.30pm

Learn, practice and
experiment in a friendly
environment

Everyone welcome.
5 weeks £25.00
or £6.50 per class

**Tel. Gill on 782402 to book a
and for more details**



BURTON FELLWALKING SOCIETY

September Walks

Sunday 2 - 1.00pm

Parbold

Clive Horsford - 782483

Saturday 15 - 9.30am

Clougha

Jenny Rae - 736211

Wednesday 26 - 1.00 pm

* Windermere

Kath Hayhurst - 781613

All walks: Meet in the Memorial Hall car park to
arrange lifts & share transport to the starting point.
(* less than 5 miles at a gentle pace)

Visitors £1.00 Membership £4 from Jan 1st yearly



Burton W.I.

September Meeting

Thursday 13 September at BMH

Wildlife Around the World

David Marsden

Competition: A Bird

Hostesses: Mrs H Boldy & Mrs P Johnson

Contact: Mrs A Williams, 781506



Holme & District Local History Society

History of Lancaster Castle

Christine Goodier

Monday 17 September at 7.30pm

Burton Memorial Hall

Visitors welcome

What's On?

See back page for more village events & activities

County Library Van Times



The library van will be in the Memorial Hall car park every Monday between 10.00 - 11.00 a.m. Why not pop along and save yourself a trip to Kendal?

LMMES

Cinderbarrow



Welcome to the miniature railway at Cinderbarrow Picnic Area

Trains will run on most
Sundays
(weather permitting)
throughout the Summer
10.30 a.m. - 4.00 p.m.

For more details ring Peter Ellis, 781057

Mobile Banking Service

Memorial Hall Car Park
Fridays 10.45am-11.30am

Borwick & Priest Hutton Gardeners' Club

"A Calendar of Colour"

Janet Merilion

Tuesday 25 September at 7.30pm

Borwick Memorial Hall

Holme & District Flower Club

"Anything goes"

Liz Broad

Monday 3 September at 7.30pm

Preston Patrick Memorial Hall

Contact Linda Hopkins, Secretary,
for more info: 01539 621455

Visitors welcome at £3 each

Cancer Care Cafe

Last Friday of every month
at Slynedales, Slyne Rd, Lancaster
(just over Beaumont Bridge)

Open for Tea and Coffee
10.00 am - 12 noon

Free Parking
Everybody Welcome!

Further details from 01524 381820

Circuit Training

Every Monday at 7.15 pm
BMH Main Hall

Every Friday at 6.15 pm
BMH Reception Room

Improve your Strength & Endurance
Cardio-Vascular System
Body Composition & Flexibility

For further info call John 01524 781707



Library Coffee Morning



Burton Memorial Hall

First Monday of every Month

Come and Join Us!



Burton Art Group

Mondays 2:00 - 4:00 pm

Burton Memorial Hall

For more details tel. 782749

KENT ESTUARY NEIGHBOURHOOD FORUM MEETING

Tuesday 4 September at 7.30pm
Heron Hall, Shaw Lane, Storth

Everyone Welcome!

If you need or can offer
a lift, please call Kath
on 01539 773180



Editorial...



Want to know something? Ask!

That's just what Gill and Akis, the new owners of the village shop and post office are doing, the centre pages of this month's BN are a pull-out survey to find out what Burtonians would like to see change/stay the same, so take the time to make your views known to keep our shop and post office here! Note that if you don't want to go pulling pages out of your BN then there will be extra copies of the survey at the shop.

Allstars Ride Again, Kimo Sabe...

Yep, it's been a long time since their last outing and this time it's only for one night but for a good cause as usual. All the proceeds from this one are going towards buying a special bit of cancer treatment equipment for RPH (an Image Guided Radio Therapy unit to more effectively 'zap' tumours) - and there probably isn't a family that's not been touched by this disease in one form or another. Tickets are limited to 150 so watch out for them and get yours fast. P.S. I am reliably informed that this is going to be a full-on dance night so get ready to party!

... smoke signals Tonto! What are they saying?

Heap load of rubbish! From the smell it would seem that's what's being burned according to one letter to BN this month. There are all sorts of rules about what can and cannot be stacked on a November 5 bonfire and if they refuse it then you shouldn't burn it either - modern materials often release toxic gases when ignited!

Thanks for the support!

Another year and Burton has come up trumps once again to keep your Burton News afloat - so a big thanks from all of us to all of you who do find it worthwhile funding BN. Thank you to all our advertisers who support us financially as well. We now have 44 businesses who advertise in the pages of the magazine, covering a vast range from building services to hairdressers, eating out, taxi services, help with your garden, your computer, and much more. If you need a business check out BN before you look elsewhere!

AN & BJM



BN on Tape!



A reminder that *Burton News* can be obtained on audio tape for those with a visual impairment.

Please contact Judith Ellis on 781057 for further details.

ADVERTISE IN BURTON NEWS

Is your group or society organising an event or activity in Burton?
If so, tell us about it, and we'll advertise it for you for free!
See back page for how to contact us.

Annual Gift Subscriptions

If you know of anyone who may like to receive *BN* regularly each month, why not buy them an Annual Gift Subscription?

For £10 within the UK or £20 overseas they will receive a copy of *BN* each month (11 copies per year). A great way for family, friends and former residents to keep in touch with what's happening here in Burton. Anyone interested should contact *BN* at the address on the back page.



Advertising rates for both *Swap Shop* or *For Sale* is £1 per month per 3 lines (must incl. a phone number). Copy of advert & payment should be put into a sealed envelope marked *BN Sales & Swaps* and left at the newsagents or sent to our PO Box address (see back page). Cheques payable to *Burton News* please.

████████████████████ Telephone: 01524 782476
████████████████████ 01539 722594
████████████████████

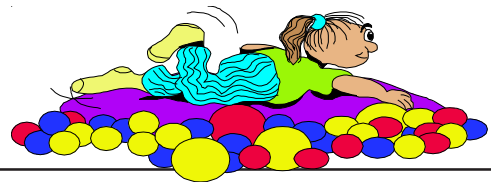
MJ BUILDING CONTRACTORS (NW) LTD

General Building, Plastering, Slating,
Ceramic Tiling

Partners:
M A Wilson, 19 Morewood Drive, Burton in Kendal
J Swindlehurst, 9 Bowland Drive, Kendal



COMMUNITY INFO



SLDC Recycling Information

Andy Vickers

Customer Contact Centre

on 0845 050 4434

email: recycling@southlakeland.gov.uk

Community Transport South Lakeland

If you need transport to hospital, doctor, dentist, optician, etc., please contact Mrs. Lynn Herd 01524 781905. If you could spare some time as a volunteer driver you would be most welcome.

Enquiries to above or 01539 735598

SURGERY TIMES

Dr JH Gorrigan

Monday 8.30am - 10.30am @ BMH

By appointment only. To make appointments please telephone 015395 63553

Child Health Clinic

1st Wednesday of each month

10.00 -11.00 am

No appointment necessary

Health Visitor: Shirley Bennett 015395 64887

Cumbria County Council Highways Hotline

0845 609 6609

to report road or pavement problems

Useful Phone Numbers

Burton News Editors	01524 781306
Burton Post Office	01524 781828
Burton Morewood School	01524 781627
Dallam School	015395 63224
QES, Kirkby Lonsdale	015242 71275
CrimeStoppers	0800 555 111
Police non-emergency	0845 33 00 247
Kendal Library	01539 732815
Kendal Hospital	01539 732288
Lancaster Hospital	01524 65944

Council Switchboards

Cumbria County Council	01539 773000
SLDC	01539 733333

**NSPCC Child Protection
HELPLINE 0808 800 5000
KIDSCAPE 08451 205 204
CHILDLINE
FREEPHONE 0800 1111**

Civil Registration Services **Births, Marriages, Deaths**

Registration of Births and Deaths is overseen by the Kendal Registrar's Office, based in County Hall, Kendal. Telephone 01539 773566 or send an e-mail to kendal.registeroffice@cumbriacc.gov.uk

Registrations may also be undertaken at Milnthorpe and Kirkby Lonsdale Libraries by appointment only, contact the Kendal Office to arrange an appointment.

To arrange a marriage contact the Kendal Registrar.

BURTON-IN-KENDAL **PARISH COUNCIL**

The **Parish Council** meets every month on the third Thursday in the month at 7.30 pm in the Burton Memorial Hall. Members of the public are always welcome to observe the proceedings. At each meeting there will be an opportunity for members of the public to voice their concerns, under agenda item **OPEN FORUM**. The Parish Council hopes that parishioners will take advantage of this. **Planning applications:** Parishioners are asked to ensure they notify the PC as well as the planning authority of any comments or objections they have about any planning application within the parish. **The Agenda of the next meeting and Minutes of the last meeting** are always available on the Parish Council notice board outside the Burton Memorial Hall or on the Parish Council website. On the website parishioners may also vote on the current **HOT TOPIC**, leave comments or suggestions on the **FEEDBACK** board, find contact details for the Clerk & Councillors, and access the archive of PC agendas, minutes & reports.

www.burton-in-kendal-pc.gov.uk

**FOR FURTHER INFORMATION, CONTACT
THE CLERK - Charles Dale
01524 781145**

What's On?

See page 2 for more Events Meetings and Activities

Burton-in-Kendal Tennis Club Cheese and Wine Evening

Friday 7 September at 7.30pm

Burton Memorial Hall.

Tickets cost £8.00

to include cheese and wine

Available from committee members or call 781596

Everyone welcome

BURTON PRE-SCHOOL

New Parents Evening

Wednesday 19 September

7.30 - 9.30pm

Club Room, BMH

Have a glass of wine or two and meet and chat to staff,
committee members and other parents/carers.

All parents/carers of pre-school children welcome.

Committee AGM

Thursday 27 September

7.30pm

Club Room, BMH.

Election of new committee,
open to all parents/carers of pre-school children.

ADVANCE DIARY DATES

BMH Management Committee

Thur 4 Oct 7.30pm BMH

Burton Pre-School, New To You Sale,

Saturday 3 November,

10:00am -12:00 noon, BMH.

BADS Autumn Play

Fri 23 & Sat 24 Nov

BMH 7,30pm

If you are planning an event why not let us know asap and we'll add it to the running events list which we hope to include every month. This helps give your event more publicity and flags up potential clashes of dates for events.

Good Samaritan Orphanage India
(UK Registered Charity 1115879)

Coffee Morning & Bring and Buy Sale

to raise funds for the orphanage

Burton Memorial Hall
Saturday 15 September
9.30am - 11.30am

Coffee & Bacon Buns will be served

Contributions for the stalls gratefully accepted,
priced if possible:

Cakes, Produce, Bric-a-Brac, Books, Plants, etc.

For further info contact Chris Thornton on 781981

ST JAMES' CHURCH HARVEST SUPPER

Saturday 22 September

6.30 pm

Burton Memorial Hall

HOT MEAL & QUIZ

Guest speaker: Mike Kendall
(Minister - St Neots Evangelical Church)

For tickets and more information, contact:

Janis Wood (tel. 781241)

BMH = Burton Memorial Hall

BURTON NEWS

Please send us your letters - articles - events
news - stories - recipes etc for publication

Drop them into The Newsagents, Main St., Burton
or post to BN, PO Box 86, Carnforth. LA6 1WY
or by e-mail to editor@burtonnews.org.uk

LAST DATE FOR COPY FOR NEXT ISSUE

20 September for October issue

Next Meeting (open to all readers)
Monday 10 September at 6pm in BMH