

**INSIDE**

Letters  
pg 2

PC News  
pg 4

Church  
pg 8

Roger Reports  
pg 12

Police  
pg 13

Swift Study  
Group  
pg 14

From the  
archive  
pg 17

Historical  
Footnote  
pg 18

Cricket Club  
pg 20

Editorial  
pg 21

Community  
Info  
pg 27

Advance Diary  
Back cover

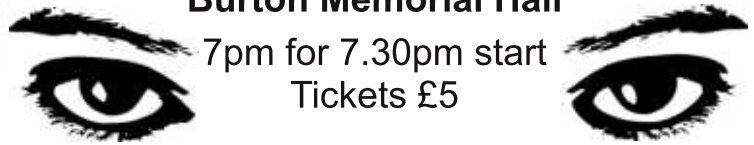
**Psychic Night with Marilyn**

**Tuesday 23 August**

**Burton Memorial Hall**

7pm for 7.30pm start  
Tickets £5

in aid of Burton Pre-school funds



**BURTON NEWS**

**THE VILLAGE NEWSLETTER**

**August 2016 Issue 261**

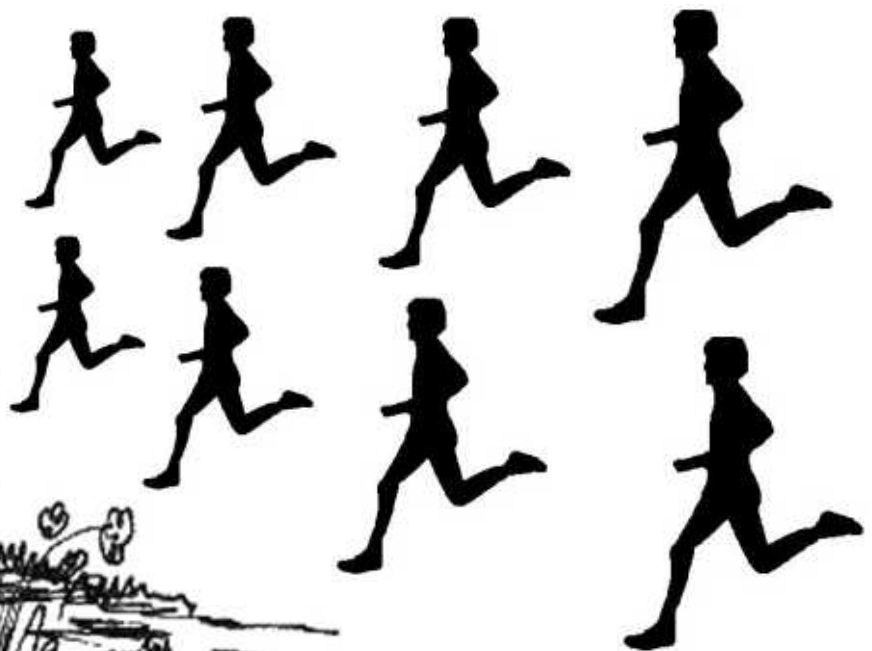
**Burton Recreation Trust**

**10K & Fun Run**

**Sunday 4 September**

10km starts at 11am

Fun Run starts at 11.15am



**Start and Finish  
Burton Morewood School**



## Burton News Information

**Joint Editors:**

Anne Nichols & Barry Morgan

**Treasurer:**

Charis Twist

**Distribution Manager:**

Hazel Parker

**Webmistress:**

Mary Bullimore

**Editorial Minutes Secretary:**

Jon Taylor

**Editorial Committee Members:**

Joan Barkley

Judith Ellis

May Hesketh

Burton News is published monthly between February and December (11 issues p.a.) and distributed by a team of 24 volunteers.

**Website:** [www.burtonnews.org.uk](http://www.burtonnews.org.uk)

**Email:** [editor@burtonnews.org.uk](mailto:editor@burtonnews.org.uk)

**Tel:** 01524 781306

### BURTON NEWS

Please send us your letters - articles - events news - stories - recipes etc for publication

Drop them into The Newsagents, Main Street, Burton or send by e-mail to [editor@burtonnews.org.uk](mailto:editor@burtonnews.org.uk)

**NEXT MEETING 7.30pm**

**Tuesday 16 August in BMH**

Members of the public are welcome to attend

**LAST DATE FOR COPY**

20 August for the September issue

### THE FAIRBANK SOCIETY

Fairbank, Kirkby Lonsdale. LA6 2BD

**Supported Housing  
for Independent People**

For information contact

**Susan Stoddard – 01524 271077**

[manager@fairbanksociety.com](mailto:manager@fairbanksociety.com)

[www.fairbanksociety.com](http://www.fairbanksociety.com)

## Readers'

# LETTERS



Dear BN

I would like to say a big thank you to Martyn Looker and Paul, also Graham Wilson and Neil the Handyman from Milnthorpe. Apart from doing a fantastic job on my cottage, Cockpennys in Cocking Yard Burton, they gave me a lot of support, because there were a lot of problems, but nothing daunted them. The people of Burton are very lucky to have such dedicated professional tradesmen in their area.

Thank you,  
Kathleen Bratby, Chorley, Lancs.

Dear BN,

IT IS WASTE MANAGEMENT AGAIN !

I was brought up during the Second World War to realise that we were all in it together. I had assumed that both users and collectors were two components of one process. So I was very surprised when in conversation with the waste management official about the Blue Boxes and the difficulty everyone has of lifting carrying them to be told that the collectors were "trained in lifting and carrying said boxes." Surprised, I then asked why the rest of

*Please would readers note that letters & articles must include a valid name & address. This can be with-held from publication on request. We will not publish any anonymous letters, or material which, in the opinion of the Editorial Committee, is of an offensive or defamatory nature. BN reserves the right to edit letters & articles in the interests of magazine space.*

us, the users were not informed. In my mind was all the (mixed) messages we had received from them with regard to the mess that was made to collection timings. A notice on "How to Lift and Carry Two Full Blue Boxes" would have been most helpful.

My enquiries as to why this hadn't happened was replied by "We only have a duty of care to our workers." Amazement silenced me, as I can see no separation in the tasks of getting the bins to the pavement and the collectors moving them from pavement to lorry. On my recovery I did ask how we users could be helped, to be told "It is all on the internet under manual handling."

I shake my head at the distinctions that are being made and am thankful that I am "assisted" in my collections, as at my age such searches are beyond my capabilities. Surely what is called for is acknowledgement that both parties are equally involved and there should be parity of treatment. We are in partnership whether we like it or not and respect and good relations are basic to the good work done by both sides. But now at least you know where you can get some appropriate information. I would be interested in what that is!

Alison Murphy  
Morewood Drive

## BURTON RECREATION TRUST

The Burton 10k and Fun Run is being held on Sunday 4 September, in aid of the Burton Rec Trust and towards the resurfacing of the MUGA. Just wanted to let fellow Burtonian's know first so you can get some early training in. Good luck!

### Burton in Kendal Educational Foundation Charity Reg. No. 526953


The Burton in Kendal Educational Foundation provides small grants to Sixth Form, College and University Students.

To qualify you need to have lived in one of the following Civil Parishes for at least 2 years:

Burton in Kendal, Holme, Preston Patrick, Dalton, the Hamlet of Holmescales, Beetham, Meathop, Ulpha, Witherslack or Arnside.

For an application form or further information please contact Mrs Allison Cummings: 01524 782331 or 07717 791405 [allison.cummings@btinternet.com](mailto:allison.cummings@btinternet.com)

The deadline for the return of grant application forms for the 2016/17 academic year is 31 October 2016

|   |
|---|
|  <b>THE TUTORS' ASSOCIATION ASSOCIATE</b>  |
| <b>Private Maths Tutor based in Burton</b>  |
| GCSE, A-level, degree, adult learning<br>exam preparation :: confidence building :: maths coaching  |
| <b>Approachable and professional</b><br>For an initial discussion contact:<br><b>Tony Morton-Jones</b><br>07733 433731 ~ <a href="mailto:tmjmaths@hotmail.com">tmjmaths@hotmail.com</a> |

|   |
|---|
| <b>Barton Teck Support</b><br>For all your computer needs   |
| <b>Desktops</b> supplied / built to order / upgraded / repaired<br><b>Laptops</b> supplied / upgraded / repaired<br><b>Peripherals</b> supplied / repaired if possible<br><b>Networks</b> (wireless & ethernet)<br><b>Backup</b> systems to suit user |
| <b>Call Barry on 01524 781306</b><br><b>Email: <a href="mailto:bts@yobunny.co.uk">bts@yobunny.co.uk</a></b>   |

## PC Observations...

Reporting from the  
Parish Council meeting

There was a bit of innovation at the Parish Council meeting on 21 July. In the spirit of reaching out more to the Burton community, Councillors are inviting representatives from local organisations to come and talk about their jobs and organisations. The first talk was given by Charlotte Robinson, the Coordinator of Volunteers at Age UK in South Lakeland District – there are currently 278 volunteers in this area covering an area of 770 square miles, the biggest local district in England. More volunteers are always welcome. The Age UK service is available to all comers over the age of 50 so nearly all the Councillors were delighted to find that they were eligible.

Charlotte introduced us to the surprisingly wide range of services that Age UK (a merger in 2009 between Age Concern and Help the Aged) offers. These services include a free helpline (01539 728180), home visits, care support, advice on benefits, advice on handy people for jobs around the house, lunch club support, exercise classes, craft groups, tea parties, an IT drop-in service and the award-winning Compass scheme to carry out a 360 degree assessment of vulnerable old people. There is also a 'Men-in-Sheds'

initiative working at the Furniture Warehouse in Kendal, where men can meet together and support the work of the charity. Money is raised by retail shops and warehouses, donations and charitable giving. Not surprisingly, Age UK relies heavily on volunteers – call 01539 728118 if you can help or email [volunteering@ageuksouthlakeland.org.uk](mailto:volunteering@ageuksouthlakeland.org.uk).

The normal Council business included:

Advice that there will be night-time road closures on the M6 southbound for 5 nights starting 1 August for resurfacing.

A request from Peter Smith and John Garner from the Quarry Liaison Committee for Council support to postpone a meeting about Holme Quarry development on the grounds that they have had only a day to review the relevant report. Likely issues include the effect on A6070 traffic from the quarry through the village, effect on pedestrians and cyclists, frequency of blasting and the effects of flooding on the A6070.

Following the recent "open day" about the Green Dragon Housing development at the south end of the village, a member of the public voiced his concern about the mixed development (housing and light industry) intentions of the developers.



Reliable admin support with:

Invoicing / Data Entry  
Emails / Expenses etc

Call: 015395 63888/07496 388750

[info@adminbusters.co.uk](mailto:info@adminbusters.co.uk)  
[www.adminbusters.co.uk](http://www.adminbusters.co.uk)

Westmorland House, Elmsfield Park,  
Holme, Carnforth LA6 1RJ

### JWK SOLICITORS

MORECAMBE & LANCASTER

(EST. 1888)

**Comprehensive range of legal services**

**Do you have power of attorney?**

*If not, you need to consider making one, as new powers need to be registered before they can be used.*

**CONTACT: TONY COLLINSON**

**TEL. 01524 416315**

**Email: [arc@jwksolicitors.co.uk](mailto:arc@jwksolicitors.co.uk)**



Specifically why is light industry part of the scheme when at Junction 36 there is a thriving industrial development facility? The team from SLDC at the open meeting were less than convincing that this has been thought through it was argued. Councillors are already aware of this issue and agreed to monitor the development of the scheme.

Kathryn Smith then inquired about the possibility of making the speed indicator device to be purchased by the PC movable to say three different sites to avoid "sign blindness" – motorists getting too familiar with the device being in only one position. Councillors welcomed the suggestion and Mike Taylor suggested a way of doing this based on his research of a similar device at Hawkshead.

The Moss Lane – Sape Lane junction (by Storth Machinery) continues to rumble on. Should there be road markings or not? The argument seems to be that it is potentially dangerous and motorists from whatever direction need to be very cautious as they approach the junction.

Roger Bingham reported on a confusing proposal to introduce "three-member wards" for district councils. This would mean Burton being grouped with ward members over a wide

geographical area, more elections, thinly spread visibility of Councillors, more difficulty in building local council relationships with Councillors etc. Exasperated Paul Rogers exclaimed that it was pointless to discuss it. It sounds barmy but it's going to happen anyway whatever Burton PC thinks!

Roger also reported the likelihood that Cumbria Children's Services will soon be in special measures, the Drigg low level nuclear waste facility is going ahead and that County Council Highways have agreed to put up some new signs to tell people where Dalton is and how to get to Holme Mills. Mike Taylor called all this "street furniture" and questioned the need.

There is a sense that Councillors are increasingly frustrated with their powerlessness in the face of SLDC and CCC decision-making which sometimes doesn't seem to make a lot of sense at a parish level. Overall though, it was an interesting meeting with at least an airing of several potentially big impact issues for Burton's infrastructure, environment and character. The next speaker – if the invitation is accepted – could be from United Utilities to speak about drainage and flood risk management for Burton. That will be interesting!

J.M.



Telephone: 01524 782476  
01539 722594

**DAYLUM LTD**

**General Building, Plastering, Slating,  
Ceramic Tiling**

**Partners:**

M A Wilson, 19 Morewood Drive, Burton  
J Swindlehurst, 9 Bowland Drive, Kendal



**Lawrence Taxi & Private Hire**

07720205099

Find us on Facebook  
Lawrence Taxi & Private Hire

- \*Local and Long Distance
- \*Pre-bookings taken
- \*7 Days a week
- \*Friendly, Reliable Service
- \*All areas covered

## Burton Memorial Hall

At their July meeting members of the Hall's Management Committee once again expressed their concern at the number of vehicles belonging to people not using the Memorial Hall which are being left in the car park for long periods. The Committee has been told of for sale notices in vehicles being parked up, of some who car share leaving vehicles in the car park for the whole working day, and of residents from other parts of the village who leave their vehicle there and walk to their houses.

Having vehicles left in the car park like this is causing a problem for those users who pay to use the Hall, and we are being told that some groups may look to book elsewhere if their users cannot find space in the Hall's car park. Obviously this would have serious implications for the Hall's funding and ultimate viability, so please can we remind everyone that it is not a public car park, it is for booked in Hall users.

We have no issue with anyone parking for a few minutes whilst they nip into the shop or butchers, or go to post a letter or drop the kids off at, or collect from, school, but parking for a longer period is giving us a real problem and we need your help to resolve it.

The Hall is in use between 8am and 10pm most days, and at weekends can be occupied up to midnight, so if you want the Hall to be able to survive and carry on being a facility for the village we would appreciate it if you would please bear this in mind. Thank you.

Anne Nichols, Vice-Chair, Man. Committee

## Cinderbarrow Picnic Area and Cinderbarrow Railway

The Cinderbarrow Picnic Area and the land that the popular Cinderbarrow Railway is on belong to Lancashire County Council and is managed by the Council's Countryside Service.

Due to budget constraints the County Council wish to dispose of the site, along with about 90 others, so they can close their Countryside Service Department. To achieve this the Council is holding a public consultation (Countryside Service Consultation 2016) which is open to all interested members of the public to respond to. The information is available on line at [www3.lancashire.gov.uk](http://www3.lancashire.gov.uk).

Cinderbarrow Railway was developed and is run by members of Lancaster and Morecambe Model Engineering Society and the railway is open to the public on Sundays and Bank Holidays



**GEC Cleaning Services Ltd.**

Established 1996

### **CARPETS NEED CLEANING?**

Using our superior thermal system your carpets will be beautifully clean, deodorised and protected all in one process.

*Free Quotes A Pleasure*

**Call Gary on 01524 782857**

## **BURTON FIREWOOD**



**David Healey**  
**07920 487406**



## Cinderbarrow

Miniature Ride-On Railway

A6 Tarn Lane Yealand

10.30am - 4pm

each Sunday & Bank Holiday until end of  
September weather permitting

from Good Friday until the last Sunday in September. It has proved to be a popular attraction for very many local families.

The model engineering society is hoping that the County Council will accept that the Society will be good custodians of the whole site and are therefore making an application to the Council to take on the challenge. This will include keeping open and maintaining the Picnic Site for the benefit of the public along with the railway and we would welcome any ideas, offers of help and comments from the local community that would be beneficial to the picnic area and/or the railway. Contact can be made via our web site, [www.lmmes.co.uk](http://www.lmmes.co.uk), on Sundays at the railway or by contacting the Secretary by email at [secretary@lmmes.co.uk](mailto:secretary@lmmes.co.uk).

## The Little Cumbrian Tea Room at 3, The Square

The Little Cumbrian Tea Room with a piano is scheduled again for Saturday 3 September, to raise money for the Rosemere Cancer Foundation.

We have decided to keep the formula unchanged so that, as previously, there will be 'sittings' at 10.30, 11.30, 1.30 and 2.30 all at £6.00 per person. I will provide my fresh scones with cream and there will be a variety of fresh cakes on offer and as much tea or coffee as you can drink... and of course the piano! I'm toying with the idea of adding a glass of Prosecco to the menu in the afternoon... and the morning.

If you've been before please come again. If you haven't, you're in for a treat. To reserve your table please call 01524 781350.

Marion Plowright



NSPCC Child Protection  
HELPLINE 0808 800 5000  
KIDSCAPE 08451 205 204  
CHILDLINE  
FREEPHONE 0800 1111  
BULLYING UK HELP SITE  
<http://www.bullying.co.uk/>

**ORCHARD**  
financial planning  
Independent Financial Advisers  
015395 67129 [www.orchardfp.co.uk](http://www.orchardfp.co.uk)

## Jan's Pantry

Mobile Outside Catering for all Occasions  
Barbecues • Weddings • Christenings • Parties etc.  
**A fully qualified cook at your fingertips**

For enquiries call  
**01524 781904 or  
07855 202124**

*Your Celebration Cakes  
can be done too*



# Vicar's Letter...

## Church Open

St James' Church is, of course, not like a club house that belongs to a particular group who share a common interest such as snooker or model trains; rather it was built to be a place where the whole village might worship the living God. Since moving to Burton I have discovered that those who have an interest in the church building and a connection to it extend far beyond the congregation that gathers each week. So I am very pleased to announce that from the beginning of August the church will be open each Friday and Saturday throughout the year from 10am until 4pm (or until dusk if sooner).

The main doors will be unlocked and you will be welcome to come in and enjoy the history, the architecture, the peace and the connection with the lives and faith of those who lived in Burton in the past. Parts of the current building date back to the 12th Century, but it seems that villagers used the site to gather and worship the Lord Jesus long before that. We hope to add to the displays and literature that explain the building and its long history, and guide those who are either looking for spiritual direction or wondering about the God that our ancestors knew and served.

Many thanks to those who have prepared the building for opening and to those who have volunteered to unlock and lock the doors each week. Church buildings are less vulnerable to theft and damage when they are open and visited so you will be helping to care for our wonderful old building if you visit often and quickly report anything suspicious to one of the churchwardens.

Unfortunately, however often you visit on a Friday or a Saturday, there is one thing that you won't see - the church. As you will know 'church' does not properly refer to the building at all - it is a description of people not stones, the assembly of those who gather on the first day of each week to worship the risen Lord Jesus. So we will continue to unlock the building each Sunday too, and to that 11am gathering everyone in the village is also warmly invited.

Sincerely  
Graham Burrows

St James, Burton & Holy Trinity, Holme  
The Vicarage, Glebe Close, Burton  
T: 01524 781210 M: 07740 622962  
E: vicarburtonholme@btinternet.com  
W: [www.achurchnearyou.com/burton-st-james](http://www.achurchnearyou.com/burton-st-james)

### **DALTON WOODLAND BURIAL GROUND**

Natural Woodland Burial Ground

"Return to the Earth, naturally"

[www.daltonwoodlandburial.co.uk](http://www.daltonwoodlandburial.co.uk)

**Burton-in-Kendal: 01524 782442**

### **Warton Methodist Church Borwick Lane, Warton**

Sunday Morning Service 10.00am  
Sunday Night Live 6.00pm

Various Connect Groups  
through the week

All Stars 6-11yrs Friday 6-7pm  
All Stars + 11-15 yrs Friday 7.30 - 9pm

[www.wartonmethodist.co.uk](http://www.wartonmethodist.co.uk)

Tel: 01524 732626



# St James' Burton

## August Services

**Sunday 7 August, 11.00am**  
Morning Worship with Communion

**Sunday 14 August, 11.00am**  
Morning Worship

**Sunday 21 August, 10.00am**  
Joint Morning Worship with Communion  
at Holy Trinity, Holme

**Sunday 28 August, 10.00am**  
Joint Morning Worship at St James',  
Burton

Recent sermons can be listened to at  
[www.buzzsprout.com/61440](http://www.buzzsprout.com/61440)

Services at our sister church, Holy  
Trinity Holme, are usually at 9am each  
Sunday.

## Prayer Requests

If you would like to request prayer for  
yourself or for anyone else, please  
contact one of the Church Wardens.

## Transport to Church

If anyone will need a lift to either Burton  
or Holme church, please contact one of  
the Wardens.

### ST JAMES & HOLY TRINITY CHURCH TELEPHONE NUMBERS

**Vicar: 01524 781210**

Wardens (Burton):  
Michael Carr 781283  
George Flanders 781729  
Frances Roberts 781943

Wardens (Holme):  
Neville Pereira 782075  
Richard Anson 781294

Treasurer:  
Rebecca Jackson 782590

Secretary:  
George Flanders 781729

Organist/Choir Leader:  
Kath Mills 732194

Reader:  
David Mills 732194

### St James' & Holy Trinity Junior Church

We are delighted to include children in our  
services and we don't mind if they make a bit  
of noise or wriggle around!

We have toys and other activity material  
available and there is a room which parents  
and children can use when you need a break.  
For more information call 781210

### St. Mary's R.C. Church Yealand Conyers

**Mass Times: Sat 6.00 pm**

Contact: Canon J Gibson  
**01524 732940**  
for further information

### Yealand Quakers

Yealand Meeting House  
18 Yealand Road, Yealand Conyers

**Our normal Sunday Meetings for  
Worship are held from 10.30 - 11.30am**  
*Visitors are always welcome*

For more information call:  
01524 781601 or 01524 782052  
or 01524 732336

## EDWARD DUCKETT & SON

**Joinery Specialists and  
Funeral Directors**

Greenside, Holme, Carnforth  
Lancs. LA6 1PS

Tel: 01524 781232 (Joinery)  
01524 784211 (Funerals)

PRIVATE CHAPEL OF REST

## Playgroup Summer Party and a Volunteer Plea

For our last session before the summer holidays, our babies, toddlers and pre-schoolers had a party. We had loads going on and a great turnout of 25 0-4 year olds in party gear or fancy dress (and the 20 grown-ups that they brought along.) We borrowed a couple of small bouncy castles, so had one inside and one out (thank you Rachel and Simon, respectively.)

We also had a bunch of special guests: Awesome Ashleigh from Diddi Dance (toddler dance classes) came and did a super fun and energetic taster session. Thank you! This was followed by well-needed refreshments – in the form of strawberries and cream and ice cream! These were brought by attendees and served on Emma Jane Event's lovely trolley with its cute bunting!

The finale of the party was a taster session from Rhythm Time (baby and toddler music classes). Angela was amazing at getting all the kids involved, and finished off with everyone doing the Hokey Cokey – the perfect end to the first 7 months of our wonderful playgroup! Thank you!

Also worth mentioning is that our lovely health visitor, Nicola Wilde, was also at playgroup that day, which is when she

informed us all that she's leaving! She's been a wonderful asset to the group and to all young families in the village. She will be missed. Thank you for everything, Nicola! We hope to continue our health visitor sessions with Nicola's successor. Playgroup will be back on Thursday 8 September, 1-3pm at Burton Memorial Hall.

**VOLUNTEERS WANTED:** We hope to run on a rota next year, and would love any extra help from anyone willing to volunteer. Help with refreshments and/or setting up would be much appreciated. So if you have an hour or so to spare on Thursday afternoons, please contact me by email on [maddy.grimmer@gmail.com](mailto:maddy.grimmer@gmail.com) or drop in when we return after summer (sorry I can't provide a phone number – we'll be out of the country.)

Thank you to everyone who's been involved in making our lovely playgroup a great success, we can't wait to see lots of old and new faces in September!

Maddy Iddon

See us online with colour photos!

[The all new & revamped  
Burton News Website](http://www.burtonnews.org.uk)

[www.burtonnews.org.uk](http://www.burtonnews.org.uk)



Fully Qualified Childcare Staff  
For Pre-School Children  
Aged 3 months To 4 Years

**Open daily Monday to Friday 7.30am - 6pm**

Mobile Childcare Services available  
For weddings, christenings, parties etc

**SPOTTED DOG CHILDREN'S CENTRE**  
CLAWTHORPE HALL BUSINESS CENTRE  
Tel : 01524 784321

## ***D.A.BELL LTD***

Plumbing & Heating Engineer  
Gas, Oil & LPG Installation, Repair,  
Servicing & Maintenance

Bathrooms Fitted & Tiling

Gas Safe Reg No 92436  
OFTEC Reg No C3883

**Tel: 01524 781973**  
**Mob: 07831 231492**

## Holme & District Local History Society Trip to Eden Camp

After preceding days of rain it was with some trepidation that we set off for our annual trip. We need not have worried, the day was fine and dry, so we travelled onwards with heightened spirits. We stopped, en route, at the Coniston Hotel, Coniston Cold, for tea/coffee & biscuits overlooking the terrace and lake, wonderful!

Proceeding onwards, we made our way to our destination of Eden Camp near Malton, North Yorkshire. On arrival there, we were given a most enjoyable and instructive introductory talk on the camp by the site manager. We then took lunch at the camp before visiting this most unusual and entertaining museum.

Eden Camp is the only modern history museum of its type in the world. It gives the opportunity to experience the sights and sounds of life on the home front and on the front line, which we all did with great enthusiasm!

Eden Camp is housed in buildings and grounds of an original WW2 prisoner of war camp built by Italian prisoners of war in 1942. Once completed, it could hold up to 1,000 prisoners. The prisoners were mainly employed in farming the surrounding area, most of

them "getting on well" with the local population.

The last German Prisoners of war were not repatriated until 1948, some chose to remain in Britain to start a new life for themselves. Eden Camp opened as a museum in 1987.

Following our day in Eden Camp we journeyed homewards with a break for tea & scones (most civilised!) We arrived back to Holme and Burton after what had been a great day out with a difference!

John Brown

## ART WORKSHOP

I am running a "Brusho" workshop, exploring how to use Brusho in mixed media. For anyone unfamiliar with Brusho it is a powder normally used as a fabric dye but which lends itself well to brightly coloured mixed media artwork. The workshop is on the 24 September from 1pm until 4pm in the Club Room of the Memorial Hall. The cost is £12.50 with tea & biscuits provided. Anyone interested can contact me on 07852 240778 or email [callylawson@btinternet.com](mailto:callylawson@btinternet.com). There is also a page on my website [www.callylawson.co.uk](http://www.callylawson.co.uk)

### Berry's Garden Services

- General Garden / Grounds Maintenance
  - Lawn Cutting
  - Hedge Cutting
  - Planting

Contact Nick

07766 395595 / 01539 583754

[berrysgardenservices@gmail.com](mailto:berrysgardenservices@gmail.com)

[www.berrysgardenservices.co.uk](http://www.berrysgardenservices.co.uk)

(Also on Twitter and Facebook)

M  
I  
C  
K



L  
O  
R  
D

**HOLME BUILDING  
SERVICES LTD**

All aspects of building work undertaken

No job too small, so call

**Tel:- 01524 782472**

**Mobile:- 07977 093070**

1, Oxlands, Holme, Lancs, LA6 1RG



## Roger Reports...

from the District & County Councils

Despite all the shenanigans that have followed the European referendum local government, unlike national political affairs, has kept calm and carried on. I have continued my summer-time highways inspections which, like the road surfaces, have produced a patchy effect. Thus, some residents of Neddy Hill are pleased with repairs and anti-flooding measures while round the corner on Tanpits Lane regularly requested work has not started nor, at the time of writing, have the pot holes been filled. But, please, continue to let me know of defects.

I have also been drawn into objections to the railway companies chopping down trees along the main line although they had previously stated that they would only be 'trimming.' But as none are subject to Tree Preservation Orders all we can do is grumble.

Meanwhile, I've been catching up on a major cause of grumbling by looking at local government finances particularly the Council Tax. There is now a 100% empty homes exemption for up to six months. In the case of the death of the occupant the exemption starts only when probate is granted. In the

intervening period the deceased's estate is responsible for payment and also for period after the six months is up. Even if the deceased has been on housing benefit or council tax relief the full tax must be paid from the estate. The same rule applies to social housing rents. I recall unsuccessfully fighting a case for a family who had not cleared a deceased relative's house for three months after her death because they didn't think they would have to pay anything because 'Grandma had had her rent paid.' I think South Lakes Housing follows the old SLDC council house ruling which limits the post death occupation to three weeks.

Recently, housing benefit has been limited to families with two children - so there's nothing extra if a new baby comes along. Ratings exemptions include all agricultural land - which is also generally free of inheritance tax.

Second homes now pay the full Council Tax but there are demands that they should pay 100% + with additional revenue going to subsidise 'affordable' homes for local people.

One 'concession' is that if you wish to appeal against the rating band for your property neither the state nor the councils charge you for the administrative or legal costs.

# HALE GARAGE CO



(Practical Automobile Engineers)  
*Established over 70 years*

## Main A6 Road, Hale

**New & Used Car Sales Service & Repairs**  
Full Dealer Computerised Diagnostics Equipment  
Petrol & Diesel MOT Testing. Body Repairs, Tyres  
Batteries, Exhausts & all your Motoring needs  
**Free collection or loan car service**

 **015395 62173 / 62839**

### Unique handmade jewellery and rings in precious and semi-precious materials

We create **jewellery** exclusively for you, and to your budget.  
Gifts for him and her.

Gift vouchers available.

Visit our studio at Greenlands Farm,  
Tewitfield or call us on 01524 784187  
email: [info@macmillan-clare.co.uk](mailto:info@macmillan-clare.co.uk)

## Macmillan-Clare

DESIGNER GOLDSMITHS



[www.macmillan-clare.co.uk](http://www.macmillan-clare.co.uk)

There is also an 80% reduction for charities. These include not only high street charity shops but charities like some private schools and also schools which have become academies. Though it should mean that schools will have more money to spend on pupils it might seem unfair if they still use council services. I have not yet found out if academies are billed for council services ranging from refuse disposal to health and safety checks.

Finally, just before the schools go back, parents might like to check their family's eligibility for school clothing allowances of £25 for primary and £35 for secondary pupils via phone on 01228 221008 or on the council's website at [www.cumbria.gov.uk/uniforms](http://www.cumbria.gov.uk/uniforms).

You can contact Roger as follows:  
 South Lakeland District & Cumbria County  
 Councillor R.K. Bingham  
 The Smithy, Ackenthwaite,  
 Milnthorpe, Cumbria, LA7 7DH  
 Tel: 015395 63694  
 e-mail: [roger.bingham@cumbria.gov.uk](mailto:roger.bingham@cumbria.gov.uk)

## Missing 30mph Sign

There is no 30mph sign on the left-hand verge of the A6070 approaching Burton from the north. It was mentioned to Cllr Bingham recently and he said he is aware of it and will raise it with the relevant dept again. Watch this space!



## POLICE NEWS

Logs of note for the area of Burton are

17/6 – Parking issues reported on Morewood Drive, this is being monitored, can we remind residents not to park over residents driveways.

19/6 – Criminal Damage was caused on Drovers Way.

19/6 – ASB caused on Drovers Way.

22/6 – ASB caused on Drovers Way.

2/7 – ASB no damage caused on the Bowling Green, youths have been identified and will be spoken to in due course.

PCSO 5244 Mandy Coleman  
[Amanda.coleman@cumbria.police.uk](mailto:Amanda.coleman@cumbria.police.uk)



Linda Green



Your Local  
Mobile Hairdresser

7 Tanpits Lane, Burton-in-Kendal

Tel: 01524 781811



**Dalton Hall  
Business Centre  
Burton-in-Kendal**

**Meeting Room Hire**

All Enquiries 07881 930139

[offices@daltonhall.co.uk](mailto:offices@daltonhall.co.uk)

<http://www.daltonhall.co.uk>



It's nice seeing all the new young birds around at the moment, only this morning (July 21) I had a family party of at least five Marsh Tits just as you start to climb Burton Fell. And whilst spending time watching them, I noticed in the distance what I thought could well have been young Redstarts! Let's hope they all make it.

In general the birds have gone really quiet and just now and again you may hear a little disrupted call from the Chiffchaff or the hou-whit contact call of the Willow Warblers, whilst one bird for sure will not go just so quiet and that's the presence of our little scolding Jenny Wren, which gives a lot of noise for such a little lady!

A week ago in the area heading from Clawthorpe to Burton Fell I heard several Whitethroat calling for the first time this year – that was nice.

My months been taken up with the rare orchids on Hutton Roof, finding them and checking them out to see if they

were standard or hybrids or variants. Photographing them and listing them in the register for future year comparisons. I have had some fantastic specimens this year. I have managed to locate at least 20 Smalhauseneii hybrids and lots and lots of the Lemon Petalled Atrorubens varieties. And guess what? We have had something really special on Hutton Roof. I found a orchid which was short on colour: in fact in part it was light green, with brilliant white epichile and transparent around the stigma areas. It's called the Epipactis atrorubens variant "Albiflora" and it turns out that it's the very first of its type to be found on English soil (on carboniferous limestone). Sadly the Dark Red Helleborines have almost all gone over their best, but at least very soon (2 weeks away) we should start to see their larger cousins the Broad Leaved Helleborines making their appearance.

It doesn't seem two minutes since they arrived! And anytime now they will be preparing for their long journey back to Africa. The Burton Swifts Bird Study Group have been doing weekly observations, and it looks like our village Swifts have done OK again this year with most of the regular old nest sites having been used again. Usually the birds start to depart back to Africa from around the third week of July and by the end of the first week in August

|   |   |
|---|---|
| <b>Architectural &amp; Building<br/>Surveying Services</b>  |  |
| <b>PLANNING / BUILDING CONTROL APPLICATIONS<br/>FOR EXTENSIONS, NEW HOUSES, COMMERCIAL<br/>PROPERTIES INCLUDING ALTERATIONS &amp;<br/>REFURBISHMENT.</b>  |   |
| Stuart McMinn BSc HND ACABE<br>Tel / Fax 01524 781081 Mob. 07729 845147<br>Email <a href="mailto:stuartmcminn081@btinternet.com">stuartmcminn081@btinternet.com</a><br><a href="http://www.houseplansdrawn.co.uk">www.houseplansdrawn.co.uk</a> |   |

|  |              |
|--|--------------|
| <b>COLIN HARPER</b><br><b>BUILDING SERVICES</b>                    |              |
| * alterations  | * extensions |
| * plastering   | * roofing    |
| * patios   | * stonework  |
| * drainage   | * tiling     |
| <b>Quality work at competitive prices</b><br><b>Free estimates</b> |              |
| Tel: 01524 781194  |              |
| Mobile: 07880 925170   |              |
| 39 Trinity Drive, Holme, Carnforth, LA6 1QL                        |              |



our skies are quiet again. I just love to hear their screaming calls as they travel throughout the village.

Following on from them will be the Swallows and House Martins but they will probably be a few weeks later and will be seen travelling south over Burton until at least the middle of September. I find areas off Vicarage Lane to be good vantage points to watch them come either from the Lyth Valley direction or you get them coming over Curwen Wood and passing over Lancelot and Dalton.

Butterflies this month have included the Dark Green Fritillaries, but sadly not had any or heard of any reports of the rarer High Brown Fritillaries, also have had a very late Small Pearl Bordered Fritillary, and lots of Graylings on the limestone pavements.

Flowers this month have included the Dark Red Helleborine, Broad Leaved Helleborine (not yet flowered 21/7/16), Common Rock Rose, a rare White Albino Self Heal, and Common Milkwort amongst many others. Our ferns are doing extremely well especially with the Rigid Buckler, Limestone Fern, Beech Ferns, and the Maidenhair and Green Spleenworts, and not forgetting our very special Holly Ferns.

Bryan Yorke

## CRAFTMARKET 2016

This year's CraftMarket in aid of Hall funds will take place over the weekend of Saturday 22 and Sunday 23 October in Burton Memorial Hall. Open from 10am - 4pm both days, the event will showcase quality crafts on sale from the crafter. Refreshments will be on sale in our Vintage Village Tearoom, where hot and cold drinks, scrumptious home made cakes and sandwiches will be on offer throughout both days. Almost all spaces have been booked up but we can still squeeze in a few more for both days, and on Sunday there are two tables available if crafters want to do just one day rather than both days. Please do contact us quickly if you want to bag one of those that are available, by giving Anne a call on 781306 or email for a booking form and details: [craftmarket2016@burtonweb.org.uk](mailto:craftmarket2016@burtonweb.org.uk)



Charis Twist, a volunteer with Age UK South Lakeland will be attending the monthly Monday Coffee Morning from 10-11am on Monday 1 August

If you need any information about the services which we offer, please come along and see her or contact our helpline number on 01539 728180.



**BURTON BUTCHERS**  
Chester House  
Main Street  
Burton  
Tel **01524 781219**

Traditional bred meat from our own farm,  
with selection of homemade pies,  
cooked meats, ready meals etc.

**Monday - Friday 8am - 5pm**  
**Saturday 8am - 1pm**

[www.dalesbredfinestmeats.co.uk](http://www.dalesbredfinestmeats.co.uk)

**Pure Essence Beauty Salon**  
**Open to Non Members**

Specialising in Waxing, Massage, Facials,  
Wedding Make Up, Shellac plus lots more

**Please call Sue Shields on**  
**01524 735240**  
& mention Burton News to receive a 10% discount

 South Lakeland Leisure Village  
Carnforth Lancs LA6 1BH

## Well Burton certainly has got talent!

Saturday 16 July saw the first "Burton's Got Talent night" with 17 acts taking to the stage! We had a fabulous range of acts including performers from the age of 4 through to a couple of brave adults.

To a near full house there were performances from singers, musicians, ballerinas, acrobats, greek dancers, comedians and tap dancers. The children performing took to the stage with confidence and gave everyone a night to remember. From the 17 acts our three judges Neil Shaw, Paul Rossi & Val Still gave their critique and narrowed the acts down to five finalists who performed again for the public vote.

These finalists were: Charlotte McCartney & Rhianna Sisson with their Irish acrobatic duet, Darcey Barker singing Emeli Sande's Clown, Joshua Dennis with his comedic Nonsense poems, Grace Stephens solo tap dance, and Amy Graham performing a saxophone solo.

The public vote crowned Charlotte McCartney & Rhianna Sisson as Burton's Got Talent Winners 2016, the runner up was Darcey Barker. Everyone single one of our young people rose to the challenge and

performed brilliantly whilst supporting each other when nerves kicked in backstage. They made us all very proud. A big thank you goes to the performers and also to all the organisers/helpers who made this night the success it was. It took hours of preparation and, although possibly not the slickest of productions, it made up for it in entertainment and a sense of togetherness from all performers.

What a fabulous bunch of young people we have, and a resounding NO to those judges, Connor Sisson will not ditch his oldies next time!

Thanks to all who supported Burton Pre-school at this event including the fabulous raffle donations from Pure Essence, Waters Edge, Chiropody at Home, Laura Sandham's School of Dance, Emma Jayne Events & Westpac marketing.

Annwen Sisson

**St James' Church**

**Church Cafe**

**Wednesday 7 September**

**2.00pm to 3.30pm**

Burton Memorial Hall

*All welcome*

## Dave Rushworth

**Computer Repair  
Maintenance  
Upgrade**

**Tel: 07765 954386**

**email: [dave.dezy@gmail.com](mailto:dave.dezy@gmail.com)**



**ML DECORATING**  
Professional Painting & Decorating Service



- Interior + Exterior
- High Quality Finish
- Domestic + Commercial
- Dulux Select Decorator
- Paper Hanging
- 24 Month Guarantee

For a no-obligation estimate and advice call  
Martyn your local decorator on:

**Tel 01524 781291      Mob 07939 374145**

Email [m.looker@hotmail.co.uk](mailto:m.looker@hotmail.co.uk)

# From the Burton Archives...

## The Railway Inn at Burton - Some of the Publicans:

- 1861 Joseph Hall
- 1871 Elizabeth Hall, Railway Inn
- 1881 Alfred Hall, Station Inn
- 1885-1891 Edward Crewdson, Railway Inn
- 1894 John Armstrong, Station Inn
- 1897-1901 James Proud, Railway Inn
- 1905 Thomas Henry Johnson, Railway Inn
- 1912 Nathan Dixon, Station Inn
- 1923 Robert Harding Richardson, Station Inn
- 1924 William Parkin
- 1957-1961 Lucy Parkin
- 1962-1969 Thomas Anthony and Moira Birkbeck, Station Hotel
- 1972 Andrew Charles Huddleston
- 1983-1985 Bob and Kath Kirkman
- 1990-1991 Alexander McGuire
- 1992 Closed & boarded up
- 1997 John Thompson, Pot Bellied Pig
- 1998-2000 Ian N Dutton, The Dutton Arms
- 2016 Demolished

From the top:

- 1908
- 1975
- 1987
- 2000



Can anyone fill in some of the gaps?

The Burton & Holme No.1 sign shown on the 1987 photo was from the railway signal box, it disappeared after 1992.

Kath Hayhurst,  
Tel: 781613



**THE BAY BLIND COMPANY**

PLEATED ROLLER ROMAN  
VENETIAN VERTICAL  
VELUX

Each blind is measured and manufactured  
individually, and fitted personally

Commercial and Domestic : Evenings and Weekends

**David or Sandra**

**Phone/Fax 01524 781149 Mobile 07957 343071**

2 Boon Town Burton Carnforth Lancs



## Historical Footnote...

... by Roger Bingham

### 1936 A quiet Summer for Burton - 80 years ago

Historically 1936 was a tumultuous year. With hindsight it was the turning point when the post First World War era merged stealthily into the pre-Second World War period. Abroad, Italian Fascist forces invaded Abyssinia, the Spanish Civil war broke out, Japanese troops massacred millions of Chinese people and Hitler's Wermacht occupied the de-militarised German Rhineland.

Sensationally, even Burton glimpsed the former (and future) enemy's resurgence when, on a sunny summer's day, the German airship the Hindenburg floated over the village at, allegedly, less than the 50 feet high trees in Dalton Park.

Otherwise, peacetime activities were uninterrupted. For their outing the Church Choir went by motor coach to Blackpool, but excursion trains took the children's annual trip to Morecambe, and an all-age excursion to Trentham Gardens in Staffordshire. Happy family occasions included the marriage of the local policeman Charles Edwin Mounsey to a 'Mental Nurse' Miss Kate

Semple. 'The bride wore a blue ensemble model dress with hat and shoes to match and carried a bouquet of red roses'. She had obviously not heeded a recent sermon preached by the Bishop of Carlisle to the Moral Welfare Society in which he denounced the ungodliness of elaborate 'wedding finery'. Even so, Christian charitable activities proliferated.

In a flag day Miss Heaf assisted by Mrs Ward and the Misses Read and Crayston collected £2 15s for waifs and strays (The Church of England Children's Society); a church collection brought in £6 12s 1d for the Memorial Fund for King George V, who had died in January, and £8 15s 4d was raised for the NSPCC. Thanks to recently introduced 'Holidays with Pay' Holme Mills closed for a week in August and there was heavy day-trip traffic for the Summer Bank Holiday on the first Monday in August.

Regrettably, Robert Stephenson of Riggs Yard was knocked unconscious when his motor bike and side car (which contained his wife) collided with cyclists near Yealand. He was treated in Morecambe Victoria Hospital, but when Mrs Armer of Barker Terrace broke her leg in Main Street she was taken to the Royal Lancaster Infirmary. Plans to install 'Red Public Telephone Kiosks' were rejected because 'why should the

**DIGITAL TV AERIAL  
AND SATELLITE FROM  
NBC-SKYNET**

**tel 07710 400 499  
or 015395 62561**

**LOCAL-PROFESSIONAL-RELIABLE  
GET SET FOR DIGITAL !**

**Goad  
Joinery Ltd**

**All aspects of joinery including:**

Renovation, Doors, Windows, Sky Lights, Flooring  
Extensions, Fitted Kitchens, Fencing  
Barge Boards & Soffits, Garage Doors  
Loft Conversions etc

**Trusted Time-Served Joiner**

*Call for a free estimate, no obligation*

**Burton in Kendal 01524 782939**

appearance of villages be sacrificed to motorists who are late for dinner?'

It was a drizzly summer. But the sun shone for the 76th Burton Show where there was an 'all round excellence of stock and the highest entry of draft plough horses since the war.' In congratulating the winners the president of the show Mr Reynolds of Leighton Hall suggested that 'farm servants' should have a share in their 'master's' prize money - as an incentive to work harder. 'A fixed wage would not keep a worker interested but the prospect of a small bonus would prevent him from slacking!' Like the plough horses, such attitudes would soon disappear in the Second Agricultural Revolution during the Second World War. But this ultimate catastrophe was not yet contemplated in the summer of 1936.

## Library Coffee

Morning

10am - 11am

Monday 1 August



## BOOK DROP

First & Third Monday  
of each month

10am - 11am

Club Room  
Burton Memorial Hall



## Milnthorpe Library Opening Hours

Monday: 2pm - 5pm & 5.30pm - 7pm

Tuesday: 10am - 1pm

Wednesday: 2pm - 6pm

Thursday: Closed all day

Friday: 10am - 1pm & 2pm - 5pm

Saturday: 10am - 2pm

Phone no: 015395 63040

email: kendal.library@cumbria.gov.uk

Phone ahead before visiting in case of  
unforeseen closures.

New library charges in effect from 1 July

## Burton Village Store & Post Office

| Opening Hours   | Shop         | P.O.          |
|-----------------|--------------|---------------|
| Monday - Friday | 6am - 6pm    | 9am - 5.30pm  |
| Saturday        | 6am - 6pm    | 9am - 12.30pm |
| Sunday          | 6am - 12noon | Closed        |

### We now stock items from more local suppliers

**Burrows** – Bacon & Sausages  
**Dew-lay** – Cheeses  
**Diggles** – Cooked Meats  
**Greenhalgh's** – Bread, Cakes, Cream Cakes, Pies  
**James Baxter's** – Potted Shrimps & Dressed Crab  
**Kendal Jacksmith's** – Flapjacks  
**Sue Prickett** – Marmalade & Chutneys

**Fresh Vegetables Daily**  
(orders taken - please enquire)

*And our Greek specialities*

**Award winning Greek Olive Oil**

**Other Greek Products:** Balsamic Vinegar, Dolmades  
 Greek Yoghurt, Gigantes, Houmous, Olives, Tapanade  
 and now Greek Wines.



01524 781828

## DALTON self storage

- Indoor containerised storage
- Easy Access
- Well Lit
- Secure

**Tel. 01524 782442**

**Burton-in-Kendal**

## Holme Cricket Club

The season has reached the mid point for the senior teams. The 1<sup>st</sup> XI remain unbeaten in both league and Cup, a tremendous achievement, though it was close run thing at Cartmel where the match ended in a tie. The weather has intervened in several matches but in between the showers the team did defeat Arnside in the league, Carnforth in the Div 3 Cup and most impressively of all, Holme knocked first division Milnthorpe out of the Hackney & Leigh Cup at the third time of asking. Currently the first team are top of Division 3 with a 6 point lead over Netherfield.

The 2<sup>nd</sup> XI have had 3 matches rained off and after losing to Morecambe in both League and cup, a much needed win on another rainy day against a very weakened Trimpell, meant that they returned to 2<sup>nd</sup> place in a very tight league. Steve Gosling took 5 for 5 in the match against the seven men of Trimpell.

The Junior section has been in full flow. The Under 11's lost to strong teams in Netherfield and Carnforth but beat Silverdale to lie in fourth place in the league. The Under 13's have had bad luck with the weather and didn't complete a game for a month. They had enough points to lie in second place

still. The Under 15's secured a fine victory against Shireshead but lost to a very strong Morecambe side and also to Lancaster where the behaviour of a number of their players was unsavoury to say the least. This was the last league match that the first batch of Juniors through the club will play. These lads have always represented the Club in a right and proper way and given their all in every game. Hopefully they will continue to perform in Senior cricket as 5 or 6 already have done.

The second weekend in July was a huge weekend for the Club. On the Friday night, Holme ladies entertained Shireshead ladies in a well-supported fixture which was enjoyed by all, and looking at the size of the pile of empty cans the following day, it was a lucrative night also. On the Sunday, it was the annual Festival of Sport event held at the ground. Despite bad weather initially, the village once again came out in force to support and turn the day into a stunning success. Barbecue and bar staff could barely keep up with the flow of visitors and the highlight amongst many highlights was seeing The Chairman dunked into the water on the ducking stool by his own son.

Matches at the ground in August

Sat 6 Aug - 2nd XI v Silverdale A (2pm)

Sat 20 Aug - 1st XI v Shireshead 3rd's (2pm)

Sat 27 Aug - 1st XI v Sedgwick A (2pm)

龍儀酒樓

### *The Honey Tree Chinese Restaurant*

293 Marine Road Central, Morecambe LA4 5BY  
Open 7 days a week

**Modern authentic oriental cuisine  
Cooked fresh to order using  
only fresh ingredients**

CHINESE BANQUET & HAPPY HOUR  
Tel: (01524) 423860 or 420944  
Free Wi-Fi

## physio-4u

Web: [www.physio-4u.co.uk](http://www.physio-4u.co.uk) Email: [info@physio-4u.co.uk](mailto:info@physio-4u.co.uk)

**Sports Injuries - Back Pain - Neck Pain - Arthritis  
Joint Replacements - Injuries after Accidents  
Rehabilitation after Surgery**

Professional, experienced, efficient and friendly

Clinics at Ashtrees Surgery and  
The Lakeland Leisure Village

**Diane Lord - Chartered Physiotherapist  
MSc Exercise and Rehabilitation**

**Appt. or Advice 07947 727 533**



## Burton Pre-School

Burton Memorial Hall  
Chair: Annwen Sisson  
Manager: Clare Stephens



*Offering high quality childcare for children aged 2-4 including government early education grants for 15 hours free childcare places for all 3 & 4 year olds and eligible 2 year olds.*

### Opening Times

**Monday 9am - 3pm**

**Tuesday to Thursday 9am - 12noon**

**Friday 9am - 3pm**

Our regular activities include:

Phonics \* Forest Schools \* PE Lessons  
Gardening \* Baking \* Village Walks

*For any further information or to enquire about places in Pre-School please contact us*

**Telephone: 07917 870001**

Email: burton-pre-school@live.co.uk

Visit our website or join our Facebook page

www.burtonpre-school.co.uk

*We are members of the Pre-school Learning Alliance. Social Services & OFSTED registered.*

## Editorial...

We know that parking is an issue in the village, and we anticipate it will worsen once the development work starts at the former Royal site later this year. The Parish Council has discussed parking in the village and it has been raised with SLDC as part of the development plan for the Green Dragon site but, in a village with properties built before cars were invented, it is an ongoing problem for us all. If anyone has any suggestions as to how it could be tackled please let us know via the Letters page here at BN.

A small hole that appeared in the road in the neighbouring village of Holme has been causing difficulties for those travelling along Station Road. Although not much wider than a can lid, when the road surface was removed there was a hole large enough for a man to stand in, so it really does pay to report holes if you spot any. Far better to get them looked at than have the road collapse and cause injuries to anyone passing over it at the time. You'll find the Highways Hotline number inside the back cover of each issue of BN.

The recent open consultation meeting held by SLDC in respect of the proposed mixed development at Green Dragon Farm attracted much interest, with lots of feedback being provided by villagers to the planning staff and on the sheets provided. The closing date for comments has now passed so we shall await the next stage with interest!

August is usually the quietest month for BN as many of you go on your holidays, but don't forget to send us your news by the 20<sup>th</sup> for the September issue. Enjoy the summer!

*Anne & Barry*

## Annual Gift Subscriptions

If you know of anyone who may like to receive BN regularly each month, why not buy them an Annual Gift Subscription? For £12 within the UK they will receive a copy of BN each month (11 copies per year). A great way for family, friends and former residents to keep in touch with what's happening here in Burton. Anyone interested should contact BN at the address in the box on page 2.



## Holme Works Handyman



Nobody likes doing homework so let Holme Works do it for you!

### All Household & Garden work undertaken:

**Household:** Painting - internal & external work;  
Gutters - cleaning, painting & repairs;  
Pressure washing - walls, pathways, paving, decks & fencing;  
General household repairs (non structural); Flat-pack assembly.  
**Garden:** Garden furniture refurbishing; Lawn cutting;  
Hedge trimming; garden clearance.  
Recycling and more besides, just ask!

**Give Neil a call on 01524 782177 / 07712 475863**

# THANK YOU!

A huge THANK YOU to all who have again supported Burton News' annual donation appeal by means of the little brown envelope with the May issue.

Over the past 3 months you have been extremely generous and given enough to keep the News in production for another year.

Another THANK YOU goes to Gill and Akis at the Village Store, who once again have put out the donation box and kept the envelopes safe for us to collect, and been our collection point for copy each month. Without you, plus our advertisers, we could not produce the News.

A huge THANK YOU goes to the stalwart members of our Distribution Team who, come rain or shine, make sure the News reaches you each month.

And a final THANK YOU goes to our ever-patient and reliable printer Roger at Bay Type who manages to turn round the print job even when we are running late in the month. Any delay is down to pressure of time on your Editors, not on the printer, and we apologise for those occasions when it is a bit late due to unavoidable work or family circumstances.

## CHIROPODIST HOME VISITS

**Ian McCutcheon**  
MSSCh, Dip. Pod. Med., MBChA

**Tel. Burton 781383**

We also welcome your feedback on how we produce the News, and have taken on board the comments about the full page events notices trialled in the June & July issues, and these will not be repeated. Please do make suggestions for other ways we can improve the News too. THANK YOU again.

BN Editorial Committee

## South Lakes Age UK BURTON LUNCH CLUB

The Burton Lunch Club meets on the 2<sup>nd</sup> Wednesday of every month in the Kings Arms, Burton. The club is open to anyone aged 55 or older. To join the club and book your lunch please contact Mrs Margaret Prady on 01524 781195.



### For Sale

Indoor Bowls Equipment  
Suit Club or Venue

3 bowling carpets  
(approx 15 yds x 2 yds)  
3 baulks, 3 fenders, 3 jacks  
large metal wheeled storage trolley  
All in good condition

To view or for further details please  
contact Bert Nelson on 01524 781354

Swap Shop or For Sale adverts are included subject to available space & must include a phone number. Text for advert should be put into a sealed envelope marked BN Sales & Swaps & be left at the newsagents.



## What's On at the Heron Theatre Beetham

Registered Charity No. 501134

**Friday 5 August 7.30pm**

**X + Y (2014) [12A] 111 mins**

**Director: Morgan Matthews**

**Cast: Asa Butterfield, Rafe Spall,  
Sally Hawkins**

Teenage maths prodigy, Nathan, struggles with people, not least his single mother (Sally Hawkins) but finds comfort in numbers. Mentored by an unconventional and anarchic teacher (Rafe Spall), Nathan's talents win him a place at the International Mathematics Olympiad in Taiwan. Here he is faced with many challenges, in particular his new and unexpected feelings for his beautiful female Chinese counterpart. There are some marvellously nuanced performances in this very likeable, perceptive and ultimately uplifting film.

*"This story of an autistic algebra whizz kid is an emotional knockout"* (The Telegraph)

Tickets for films are £5

Doors open 6.45pm. Shows start 7.30pm.

*Book online: [www.theherontheatre.com](http://www.theherontheatre.com)*

The Box Office is closed until 2 September.

Please book on-line (available until 6pm on the night) or pay at the door.



## Burton Fellwalking Society

### Walks

**Sunday 7 August 1pm**

Halecat & Lindale 7 miles

Leader: Gary Crayston

**Wednesday 17 August 1pm**

Endmoor, Stainton & Crooklands \*\*\*

Leader: John Jones

**Saturday 20 August 9am**

Ingleborough from Clapham 8.5 miles

Leader: Mary Bullimore

**Sunday 4 September 1pm**

Troutbeck 6 miles

Leader: Mike Earl

All walks:

Meet in the Memorial Hall car park

\*\*\* less than 5 miles at a gentle pace

Visitors £2.00

Membership £8 from Jan 1<sup>st</sup> yearly

More info from the secretary,

Kath Kirkman, on 781245

or visit our website:

<http://fellwalkers.burtonweb.org.uk>

### The King's Arms, Burton

**Wednesday 3 August: Live music from 9pm**

**Saturday 27 August: National Burger Day**

*Buy a burger and we'll add another on top!*

Meals 12-2pm & 5.30-9pm Mon-Tues; 12-9pm Wed-Sun

Breakfasts every day 9am-11am (9am-12 weekends)

**GREAT FOOD! GREAT BEERS! & GREAT ROOMS!**

**OPEN EVERY DAY FOR DRINKS**

Sunday closing time 11pm

**0 1 5 2 4 7 8 1 4 0 9**

## J C Derbyshire Ltd

**BUILDING CONTRACTORS  
TRADITIONAL STONEMWORK  
SPECIALIST**

**15 ST JAMES DRIVE  
BURTON-IN-KENDAL**

**TEL: 01524 784840**

**MOB: 07967 092465**





## Holme & District Local History Society

<http://localhistory.burtonweb.org.uk>

### Monday 15 Aug

**Guided walk round  
Holme Mills with Geoff Pegg**

Meet at south entrance to the  
Holme Mills site at 6.30pm

**Members only at Summer Meetings**

## KEEP US POSTED!

If you are planning an event in Burton let us know and we'll add a free entry to the list which we publish in every issue. This gives your event more publicity and flags up potential clashes of dates. Let BN help you make the most of your event!



## Burton W.I.

**Outing & Meal  
Thursday 11 August**

*More info from Hon. Sec.  
Helena Nixon 01524 781048*



## Burton in Kendal Art & Craft Society

**Monday 5 September 7.30pm**

**Making a Sketchbook  
Demo with Elizabeth Shorrocks**

Burton Memorial Hall

[www.burton-in-kendalartandcraft.weebly.com](http://www.burton-in-kendalartandcraft.weebly.com)

## Friday Art Group

Friday 9.30 am - 12 noon  
Club Room BMH

## Monday Craft Group

8 August  
2.00pm - 4.00pm  
Club Room BMH

### Contacts for Info:

**Kath Hayhurst, tel: 781613  
& Paula Firth, tel: 781984**

## Thursday Art Group

Thursday 9.30 am - 12 noon  
Burton Memorial Hall

### More Info:

**Judith Ellis, tel: 781057**

## MICHAEL PLATT PLUMBING and HEATING Ltd



BATHROOMS SUPPLIED AND FITTED  
NEW H.E. BOILER FITTED  
RENEWABLE ENERGY PRODUCTS  
SOLAR PANEL

CORGI N<sup>o</sup>  
36856

AIR SOURCE HEAT PUMPS

**DAY TIME 07850 472780**

**NIGHT TIME 01524 782390**

WEB SITE [www.mplattplumbing.co.uk](http://www.mplattplumbing.co.uk)

## Calum Nicholson - Dairyman

Delivering in your area daily

**Milk, Eggs, Cream, Yoghurts**

All milk is locally produced

*See my range of organic produce*



**07792 954767**



[nic.hol.son@hotmail.co.uk](mailto:nic.hol.son@hotmail.co.uk)



**Girlguiding UK**  
*girls in the lead*

## Burton in Kendal Rainbows Brownies & Guides

If you or your daughter would like to know more about joining or volunteering please call 0800 169 5901 or visit [www.girlguiding.org.uk/interested](http://www.girlguiding.org.uk/interested)

**GUIDES HAS SPACES NOW!**

## **BURTON AND HOLME YOUTH CLUB**

Burton and Holme Youth Club welcomes all Year 7 - 11 young people from the local area.

It is run every Friday in term time from 7.30pm - 9.00pm at Clawthorpe Hall Business Centre.

Please contact Cathy Skidmore on 01524 781462 for more information.



**1<sup>st</sup> Burton-in-Kendal Junior Section meets on Thursdays 6pm-7pm at Burton Morewood Primary School**

*Come along!*

**For more info, tel. 781445**

## **HOLME SOCIAL CLUB**

Tel: 01524 781936

**Saturday 27 August**

**Darts, Pool,  
Domino Competition**

*Please see posters  
for more details*

Everyone most welcome  
Come and support your local club

### **Opening Times:**

Sun – Thurs 8pm – 11pm  
Fri & Sat 8pm – 12 midnight

Entertainment Nights  
open at 7.30 pm

You can also come into the club even if you are not a member and pay only £1

## **Holme & District Flower Club**

**Annual General Meeting**

**Monday 1 August**

**7.30pm**

Preston Patrick Memorial Hall



**Pass first time**

or receive free lessons until you pass

**Call Richard on 01524 781704**

[www.freedomdrivingschool.biz](http://www.freedomdrivingschool.biz)

## **Circuit Training**

**Mondays 7.15 - 8.15pm**

Burton Memorial Hall Main Hall

**Wednesdays 7.15 - 8.15pm HIIT**

Burton Morewood School Hall

**Fridays 6.15 - 7.15pm**

Burton Memorial Hall Reception Room

Improve your Strength & Endurance

Cardio-Vascular System

Body Composition & Flexibility

For further info call John 01524 781707

## **Ballet Be Fit**

Dance inspired shaping & exercise class

Great toning and strengthening

**All welcome**

no previous ballet experience required

**Every Tuesday 7.15pm - 8.15pm**

**The Gatehouse, Tanpits Lane**

Limited availability for our next 10 week block of classes, so book soon! £40 for 10 weeks

For further info contact Laura Sandham

[laura.sandham@balletbefit.com](mailto:laura.sandham@balletbefit.com)

or book with Annwen Sisson 07785 954525

## **LADIES BADMINTON**

Ladies Badminton meets in the BMH every Tuesday from 1.30pm - 2.30pm. If anyone would like to join the group please ask for more details from Stephanie Micklethwaite on 781073.

## **Cancer Care Cafe**

**Last Friday of every month**

at Slynedales, Slyne Rd, Lancaster  
(beside Beaumont Bridge)

**Open for Tea and Coffee**

**10.00 am - 12 noon**

Free Parking. Everybody Welcome!

**Further details from 01524 381820**

## **Burton Crown Green Bowling**



We meet every Monday night from about 6.30 until 8.00 (ish) from about mid-March, and anyone wishing to try their hand will be more than welcome. More details from David Raynor, Secretary, tel: 01524 734375.

**List your group in BN for free!**

Send the details to

[editor@burtonnews.org.uk](mailto:editor@burtonnews.org.uk)

## **Callanetics Sessions**

Every Friday morning at 9.30am  
at Burton Memorial Hall

## **CALLANETICS**

Cost: £5.50 per class

You will need a floor mat

Contact Lesley Gaulter  
on 07749 756992

## **Kirkby Lonsdale Netball Club**

**Queen Elizabeth School Sports Hall**

**Thursdays: 7pm - 8:30pm**

For fitness or fun, competitive and non-competitive players. All abilities welcome—come along and try the first few sessions for free!

## **Kirkby Lonsdale Junior Netball Club**

Are you a budding player?

If so, then we would like to see you  
at our junior netball training!

**Thursdays: 6pm - 7pm**

**Queen Elizabeth School sports hall Kirkby  
Lonsdale**

Open to all players of all abilities  
between years 6-9

(please wear suitable clothing and trainers)

£10 membership fee for the full year

For more information contact:

[k.l.n.c1@outlook.com](mailto:k.l.n.c1@outlook.com)



## Burton-in-Kendal Voluntary Car Scheme

If you need transport to hospital, doctor, dentist, optician etc please contact Lynne Herd on 781905. When she is away please contact Peter or Kathryn Smith on 782198. (If you could spare some time as a driver you would be most welcome, please contact Lynne or Peter for details.)

### **Child Health Clinic**

1<sup>st</sup> Wednesday of each month

10.00 -11.00 am

No appointment necessary

Health Visitor: Shirley Bennett 015395 64887

### **OUT OF HOURS PHARMACY SERVICE**

## **Ash Trees Pharmacy**

Market Street, Carnforth

**Monday to Friday 7am to 11pm**

**Saturday 8am to 6.30pm**

**Sunday 8am to 6pm**

**Tel: 01524 727877 - Fax: 01524 730421**

Cumbria County Council Highways Hotline

**0300 303 2992**

to report road, lighting or pavement problems

### Useful Phone Numbers

|                      |              |
|----------------------|--------------|
| Burton News Editors  | 01524 781306 |
| Burton Post Office   | 01524 781828 |
| Morewood School      | 01524 781627 |
| Dallam School        | 015395 65165 |
| QES, Kirkby Lonsdale | 015242 71275 |
| CrimeStoppers        | 0800 555 111 |
| Police non-emergency | 101          |
| Kendal Library       | 01539 713520 |
| Kendal Hospital      | 01539 732288 |
| Lancaster Hospital   | 01524 65944  |

### Council Switchboards

|                   |              |
|-------------------|--------------|
| Cumbria CC        | 01228 606060 |
| South Lakeland DC | 08450 504434 |

## **Civil Registration Services** **Births, Marriages, Deaths**

Registration of Births and Deaths is overseen by the Kendal Registrar's Office, based in County Hall, Kendal. Telephone 01539 713567 or send an e-mail to [kendal.registeroffice@cumbriacc.gov.uk](mailto:kendal.registeroffice@cumbriacc.gov.uk)

Registrations may also be undertaken at Milnthorpe and Kirkby Lonsdale Libraries by appointment only, contact the Kendal Office to arrange an appointment. To arrange a marriage contact the Kendal Registrar.

## **SLDC Recycling Information**



Andy Vickers  
Customer Contact Centre  
on 01539 733333

or by email to:

[recycling@southlakeland.gov.uk](mailto:recycling@southlakeland.gov.uk)

## **Burton in Kendal** **Parish Council**

### **Meetings**

**3<sup>rd</sup> Thursday of every month**  
**7.30pm in the Memorial Hall**

#### **Meetings:**

Members of the public are always welcome to observe. Each meetings includes an OPEN FORUM where parishioners may raise matters of concern to them.

#### **Planning applications:**

Parishioners are asked to ensure they notify the PC as well as the planning authority of any comments or objections they have about any planning application within the parish.

#### **Agendas, Minutes & Contact Details:**

Are available on the PC notice board outside the Memorial Hall, on the PC website, or on request from the Parish Clerk.

#### **Website:**

Documents relating to the PC may be downloaded or read online here: [www.burton-in-kendal-pc.gov.uk](http://www.burton-in-kendal-pc.gov.uk)


#### **For further information, contact**

The Clerk - Christine Davidson 01524 782694

# ADVANCE DIARY DATES

Psychic Night with Marilyn, Tuesday 23 August 7pm for 7.30 pm start, BMH  
The Little Cumbrian Tea Room, Sat 3 September from 10.30am, 3 The Square  
Burton Annual 10K & Fun Run, Sunday 4 September  
Church Cafe, Wednesday 7 September 2.00pm - 3.30pm, BMH  
Pre-school AGM, Monday 12 September 7.30pm, BMH  
Join In & Sing - Handel's Messiah, Sun 18 Sept, 6.30-8pm, Holy Trinity, Holme  
CraftMarket 2016, Sat 22 & Sun 23 Oct, 10am - 4pm, BMH (in aid of Hall funds)  
Christmas Bingo dates: Thurs 24 Nov, Thurs 1, Thurs 8, Fri 16 Dec. all BMH  
BMH Christmas Fair, Saturday 3 December, BMH

**Add your village event to our back page listing!**  
**email us with the details... [editor@burtonnews.org.uk](mailto:editor@burtonnews.org.uk)**



**KEEP CALM AND MAKE A DIFFERENCE**

**Burton Pre-School Needs YOU!**

*Clichés aside, it's true. Behind the scenes Burton Pre-School is run by a committee. Parents like you, who give their time to ensure our pre-school not only exists, but flourishes. It is a real asset to the area, and we're sure you agree that we all want to keep it going strong.*

There are various ways to find out more about what we do, *joining the committee, or volunteering:*

- Join the Pre-School volunteers group on Facebook which can be found here:  
[www.facebook.com/groups/bikpsvolunteers/](http://www.facebook.com/groups/bikpsvolunteers/)
- Email [maddy.grimmer@gmail.com](mailto:maddy.grimmer@gmail.com)
- Message the Pre-School Facebook page.
- **Attend our AGM: Monday 12<sup>th</sup> September, 7:30pm, Burton Memorial Hall**

Come September 2016, longstanding committee members will be stepping down. There are certain roles that will need filling, and more members are always welcome on the committee. It doesn't have to be a big commitment, just do as much or as little as you can. Alternatively, if you are concerned that joining would be too much of a commitment, I hope you'll consider joining our **volunteers list** to help out when you can? Many hands make light work, so volunteering to help at events, donating/sourcing raffle prizes, distributing posters etc. would make a huge difference to your Pre-School.

Hope to hear from you soon!  
Maddy Iddon  
Pre-School Committee Vice Chair (aka Rory and Tabi's Mum!)



**BMH = BURTON MEMORIAL HALL**  
**BMS = Burton Morewood School**

**BSC = Burton Sports Committee**  
**BRT = Burton Recreation Trust**

THE VIEWS EXPRESSED WITHIN BURTON NEWS ARE NOT NECESSARILY THE VIEWS OF THE EDITORIAL COMMITTEE