

**INSIDE**

Letters  
pg 2

PC News  
pg 4

Police  
pg 5

Village Store  
pg 6

Xmas Post  
pg 8

Church  
pg 10

Historical  
Footnote  
pg 12

Surveys  
pg 15-18

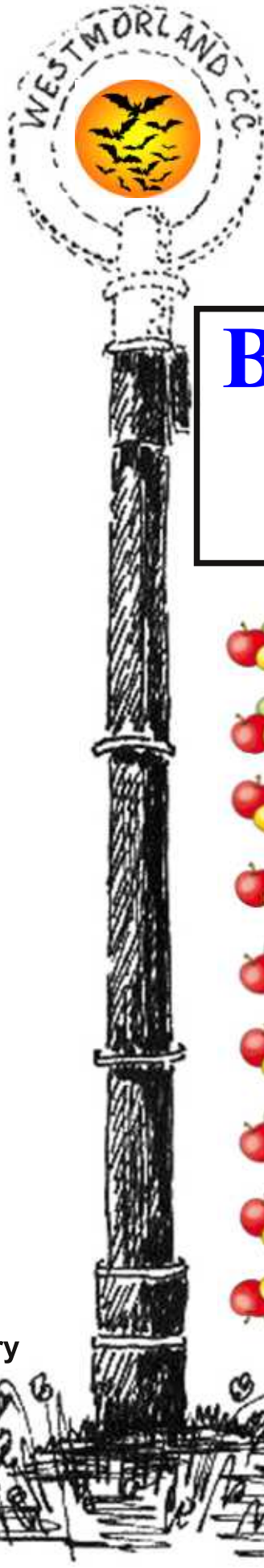
Swift Study  
Group  
pg 20

Roger  
Reports  
pg 22

Editorial  
pg 24

Community  
Info  
pg 31

Advance Diary  
Back cover



**IN THIS ISSUE...**

Burton News and Burton Memorial Hall

**SURVEYS**

We want YOUR views!

See centre page pullout.

**BURTON NEWS**  
THE VILLAGE NEWSLETTER  
October 2017 Issue 274

**SCRUMPING  
SATURDAY**

Saturday 14 October  
12 noon - 3pm

Apple-themed Stalls & Games  
Cake Stall :: Toffee Apples  
Cider, Tea, Coffee  
Raffle & Tombola

Bring the Family!  
Join in the fun!

Burton Memorial Hall  
in aid of Hall funds



## Burton News Information

**Joint Editors:**

Anne Nichols & Barry Morgan

**Treasurer:**

Clive Horsford

**Distribution Manager:**

Hazel Parker

**Webmistress:**

Mary Bullimore

**Editorial Minutes Secretary:**

Jon Taylor

**Editorial Committee Members:**

Joan Barkley

Judith Ellis

Christine Metcalfe

Vacant x 1

Burton News is published monthly between February and December (11 issues p.a.) and distributed by a team of 24 volunteers.

**Website:** [www.burtonnews.org.uk](http://www.burtonnews.org.uk)

**Email:** [editor@burtonnews.org.uk](mailto:editor@burtonnews.org.uk)

**Tel:** 01524 781306

### BURTON NEWS

Please send us your letters - articles - events news - stories - recipes etc for publication

Drop them into The Newsagents, Main Street, Burton or send by e-mail to [editor@burtonnews.org.uk](mailto:editor@burtonnews.org.uk)

**Next Editorial Committee Meeting  
7.30pm on Tuesday 17 October**

**LAST DATE FOR COPY  
20 October for the November issue**

*Please would readers note that letters & articles must include a valid name & address. This can be with-held from publication on request. We will not publish any anonymous letters, or material which, in the opinion of the Editorial Committee, is of an offensive or defamatory nature. BN reserves the right to edit letters & articles in the interests of magazine space.*

## Readers'

# LETTERS



No letters this month!

## BURTON-IN-KENDAL EDUCATIONAL FOUNDATION

Charity Reg. No. 526953

The Burton in Kendal Educational Foundation provides small grants to Sixth Form, College and University Students.

To qualify you need to have lived in one of the following Civil Parishes for at least 2 years: Burton in Kendal, Holme, Preston Patrick, Dalton, the Hamlet of Holmescales, Beetham, Meathop, Ulpha, Witherslack or Arnside.

For an application form or further information please contact Mrs Marion Robinson: [mvrob23@gmail.com](mailto:mvrob23@gmail.com) or 01524 784918 or 07531 575663

The deadline for the return of grant application forms for the 2017/18 academic year is 31 October 2017



**Lawrence Taxi & Private Hire**

07720205099

Find us on Facebook  
Lawrence Taxi & Private Hire

- \*Local and Long Distance
- \*Pre-bookings taken
- \*7 Days a week
- \*Friendly, Reliable Service
- \*All areas covered

## THE MILLER RICHES TRUST

This Trust provides financial grants (usually up to the sum of £75) to needy spinsters and widows who have resided in the former County of Westmorland for no less than 5 years. Application forms are obtainable from Holly English, Legal and Democratic Services, Resources and Transformation Directorate, Cumbria County Council, Cumbria House, 117 Botchergate, Carlisle, CA1 1RD Tel: (01228) 227354 and should be returned by no later than Friday 27 October 2017.

Iolanda Puzio  
Senior Manager  
Legal and Democratic Services

## The Little Cumbrian Tea Room

I would like to thank all the people who contributed to the success of The Little Cumbrian Tearoom on 2 September. We raised a magnificent £700 and served tea, scones and cake to 65 people. I think that the raffle prize of a beautiful picnic hamper, generously donated by Kelly and Mo Witham made a big difference to our final total and I'd like to thank them especially. The raffle was won by Mrs Gill Allen of Bolton-le-Sands, who declared she has never won a raffle in her life.

## Barton Tech Support

For all your computer needs

**Desktops** supplied / built to order / upgraded / repaired

**Laptops** supplied / upgraded / repaired  
**Peripherals** supplied / repaired if possible

**Networks** (wireless & ethernet)

**Backup** systems to suit user

Call Barry on 01524 781306

Email: [bts@yobunny.co.uk](mailto:bts@yobunny.co.uk)

One of the great things about the tearoom is the extent to which it is, indeed, a shared effort: this year smoked salmon was donated by Tim and Karen Parsons of Croft House, Akis produced yet another show-stopping cake, and Phoebe Ryan of Number 1, The Square, provided amazing flower arrangements. Phoebe, who is new to the village, is developing a business in flower arrangement using primarily wild and seasonal flowers and she's very good! This year four different pianists played in the course of the day and miraculously, in a summer of wet and dismal days, the sun shone on us.

So thank you once again, and next year I won't run out of bread for smoked salmon sandwiches!

Marion Plowright



**GEC Cleaning Services Ltd.**

Established 1996

### CARPETS NEED CLEANING?

Using our superior thermal system your carpets will be beautifully clean, deodorised and protected all in one process.

*Free Quotes A Pleasure*

Call Gary on 01524 782857

## Linda Green



Your Local  
Mobile Hairdresser

7 Tanpits Lane, Burton-in-Kendal

Tel: 01524 781811



## PC Observations...

Reporting from the  
Parish Council meeting

It was a story of two scandals at September's meeting.

Scandal 1 is the continuing lack of action about the anti-social behaviour of youths from Burton and Holme reported by PC Mandy Coleman. The police have been monitoring the situation for several months. They know who the offenders are and where they live. ASBOs have had little effect. Perhaps the time is right for tougher action? The PC discussed the situation but no clear action plan emerged.

Scandal 2 is the failure of Cumbria County Council Highways Department to tackle the flooding caused by blocked culverts around The Square in Main Street. Two members of the public - Lynne and Chris Nolan who live at The Bakery - have decided to take the Highways Department to court for their inactivity. The PC have been reporting this problem consistently for years and Roger Bingham has also tried to get action. Councillors agreed to protest again and try to set up a site meeting with council engineers to explain how important it is to keep these culverts clear. Flooding from torrents of water coming down Boon

Town Lane is an increasing problem in the centre of Burton. Seven houses in The Square have suffered from flash flooding this month.

Other news:

1. Phase 3a of the development brief for housing on Green Dragon farm is now available online at [www.southlakeland.gov.uk/development-briefs](http://www.southlakeland.gov.uk/development-briefs) or phone 01539 793388. The vision is a mixed use, well-integrated addition to the community that helps to meet local housing needs, and brings new employment opportunities to the area.

2. A number of outstanding items such as improvements to Plain Quarry facilities, the feasibility study for a footpath from Burton to Clawthorpe, maintenance of kerbstones on Main Street, funding reprinting of local walks leaflets and the B4RN initiative to improve internet connectivity, were deferred pending more information.

3. Councillors individually reported actions they have taken such as digging out drains and repositioning the Speed Indication Device (Alan Wren) and noting the need to repair a broken swing (Moira Rowley).

4. Roger Bingham reported that he would redirect any spare cash he can

**Gary's Property  
Maintenance**

**07772 922206**

**Burton Handyman**

FOR YOUR HOME MAINTENANCE  
IMPROVEMENTS AND REPAIRS

**THE FAIRBANK SOCIETY**

Fairbank, Kirkby Lonsdale. LA6 2BD

**Supported Housing  
for Independent People**

For information contact

**Susan Stoddard – 01524 271077**

[manager@fairbanksociety.com](mailto:manager@fairbanksociety.com)

[www.fairbanksociety.com](http://www.fairbanksociety.com)

lay his hands on to improving signs around Burton and flood prevention around Tanpits Lane and Boon Town Lane.

The next meeting is in the Memorial Hall, 7.30pm on 19 October.

J.M.



### Logs of note for the Burton area

15/8 - Reports of a noisy car travelling in the area, traffic officers have been informed and will monitor the area.

18/8 - ASB reported in the area, 1 youth spoken to regarding this.

20/9 - Theft of 2 recycling bins.

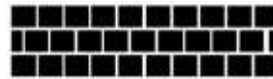
21/8 - Damage caused to fencing and a picnic bench at the School.

3/9 - ASB caused by 3 youths throwing apples at a resident.

5/9 - 2 x reports of tools being stolen from vehicles/house in the area.

8/9 - A serious RTC was reported in the area.

Speeding in the area is becoming an issue. We have deployed the Speed Indicator Device and will be downloading the DATA asap.



Telephone: 01524 782476  
01539 722594

### DAYLUM LTD

General Building, Plastering, Slating,  
Ceramic Tiling

Partners:

M A Wilson, 19 Morewood Drive, Burton  
J Swindlehurst, 9 Bowland Drive, Kendal



Parking on pavements whereby no access is allowed for a pushchair/wheelchair to pass on the pavement is illegal. What is the legal position in respect of motor vehicles parked on pavements? What offences may be revealed?

Proceedings for obstructing the highway could be instituted under the Highways Act 1980, Town Police Clauses Act 1847, and the Road Vehicles (Construction and Use) Regulations 1986 dependent on the circumstances.

PCSO 5244 Mandy Coleman



**Natural Health and Beauty Clinic**  
Education Institute Arnside  
Church Hill. LA5 0DF

Remedial and beauty therapies including  
Massage - Acupuncture - Waxing  
IPL (hair removal) - Electrolysis

**Contact Claudia**

01524 762539 or 07881 667470

[www.naturalhealthandbeautyclinic.co.uk](http://www.naturalhealthandbeautyclinic.co.uk)

**Berry's Garden Services**

- General Garden / Grounds Maintenance
  - Lawn Cutting
  - Hedge Cutting
  - Planting

**Contact Nick**

07766 395595 / 01539 583754

[berrysgardenservices@gmail.com](mailto:berrysgardenservices@gmail.com)

[www.berrysgardenservices.co.uk](http://www.berrysgardenservices.co.uk)

(Also on Twitter and Facebook)

## THE VILLAGE SHOP UPDATE

As the temporary closures of the village shop and Post Office draw near, here are answers to questions which have arisen so far, regarding what will and will not be available at the Memorial Hall during this period.

Although there will be no Post Office Counter, a mobile Post Office van has been arranged to be on site at the Hall on Friday 20 and 27 October from 10.15am - 12.15pm. The van is slightly more limited in the transactions provided - please ask for advice. The nearby offices of Holme and Carnforth, have already been advised of the period of closure and will be prepared to face increased demand.

Mail will be collected from the post-box as usual but, no collection from temporary premises. Home shopping returns and parcel collections will be unavailable at the hall, as well as mobile phone, gas and electric top-ups and photocopying. First and second class UK postage stamps will be on sale at the Hall shop counter as usual.

Payments by debit card will continue to be accepted, whilst the ATM facility will be inaccessible, limited cash-back withdrawals will be available. The

Lottery facility cannot be transferred, players may play in advance prior to shop closure but there are limitations on this aspect.

Dry cleaning cannot be accepted at the shop after the beginning of October. This service will resume when the shop re-opens.

So what WILL there be in the village hall?

Daily newspapers will continue to be available and delivered as usual by Tom. However, it would be most helpful and advisable if you take a regular paper, to alert the staff in advance of the shop closure, in order that your favourite paper can be saved for you and avoid disappointment. Pre-ordered magazines will be available as usual, along with a limited supply of weekly and monthly titles.

There will be a small supply of general greetings cards. Whilst no frozen foods or alcohol can be stored in the hall, there will be a limited supply of all regular products including chilled items. Plus basic groceries, household goods, some fresh vegetables, sandwiches, tobacco, crisps and soft drinks.

Given, the limitations of space and local bye-laws, Gill and Akis have put in place as comprehensive a supply of



Fully Qualified Childcare Staff  
For Pre-School Children  
Aged 3 months To 4 Years

**Open daily Monday to Friday 7.30am - 6pm**

Mobile Childcare Services available  
For weddings, christenings, parties etc

**SPOTTED DOG CHILDREN'S CENTRE**  
CLAWTHORPE HALL BUSINESS CENTRE  
Tel : 01524 784321



### Holme Works Handyman



Nobody likes doing homework so let  
Holme Works do it for you!

**All Household & Garden work undertaken:**

**Household:** Painting - internal & external work;  
Gutters - cleaning, painting & repairs;  
Pressure washing - walls, pathways, paving, decks & fencing;  
General household repairs (non structural); Flat-pack assembly.

**Garden:** Garden furniture refurbishing; Lawn cutting;  
Hedge trimming; garden clearance.  
Recycling and more besides, just ask!

**Give Neil a call on 01524 782177 / 07712 475863**





basic groceries and services as is possible.

Please be reassured that they, with their dedicated staff, will be on hand and available to deal with any further questions arising before and throughout the renovation period.

Both Gill and Akis are indeed, most grateful for your patience and understanding during this major upheaval.

Whilst we, customers and residents of Burton, wish them a smooth transition towards their vision of securing the future viability of that great British institution, the village shop.

Joan Barkley

## Village Store Dates

Monday 16 October - last day of transactions at the old Post Office counter. Mail cannot be accepted after 4.15 pm since there will be no further Royal Mail collection.

From Monday 16 October - The Village Store will be located in the Burton Memorial Hall Club Room.

During the period of our refurbishment our regular telephone number is likely to be unavailable for periods. You can try to contact us instead on 01524 781174.

Friday 20 October & Friday 27 October 10.15 - 12.15 A mobile Post Office will visit the Memorial Hall. The mobile facility cannot process Car Tax renewals; but remember you can tax your vehicle for November with us from the 5 October.

Wednesday 1 November - Shop & Post Office re-open. There will have been many changes during this period so please bear with us as we re-acclimatise!

Gill and Akis

**MICHAEL PLATT**  
TRADING AS

**Q P G S**

Quality Plumbing & Gas Services

-

07850 472780  
01524 782390

**COLIN HARPER**  
**BUILDING SERVICES**

- \* alterations
- \* extensions
- \* plastering
- \* roofing
- \* patios
- \* stonework
- \* drainage
- \* tiling

Quality work at competitive prices  
Free estimates

Tel: 01524 781194  
Mobile: 07880 925170  
39 Trinity Drive, Holme, Carnforth, LA6 1QL

## Christmas Post



It's that time of year again...

A Note from the Post Office about Christmas Posting

Unless you are a newsagent, a card stockist, or are planning a major refurbishment, Christmas seems a long way into the future. The kids are only just back at school and the weather, although cooler, is still often bright & even sunny. However, I thought you would like to know how the last posting dates fit with our planned closure.

As always, the last posting dates for sending Surface Mail (now called International Economy) are unseasonably early; in fact for the furthest destinations they were at the end of September!

For parcels sent by Airmail there is no rush, you have until the beginning of December for even the furthest destinations. However, if you are planning on sending parcels via the slower, cheaper option of International Economy the recommended last posting dates are:

Thursday 12 October

South Africa, Hong Kong, Singapore,

the USA and Canada. We will still be operating normally for this date.

Closer destinations are in November:

Thursday 2 November

Eastern Europe, Greece, Cyprus, Turkey, Malta and Iceland

Thursday 16 November

Western Europe

We will have re-opened for these (but only just) so please be patient with us on a new system!

Remember that parcels sent outside the E.U. need to have a customs form attached, these are available at the Post Office Counter. Also remember to put your name and address on the top left hand corner of the front of your package; this will enable Royal Mail to return your item should overseas customs authorities refuse it entry into their country.

The usual reminder about size and weight for parcels sent abroad using Royal Mail.

The maximum total of (length + width + height) is 90 cm (approx 3ft), with the maximum single dimension of 60cm (approx 2 ft). Also, the maximum weight is 2 kg.

**M I C K      L O R D**



**HOLME BUILDING SERVICES LTD**

All aspects of building work undertaken  
No job too small, so call  
Tel:- 01524 782472  
Mobile:- 07977 093070  
1, Oxlands, Holme, Lancs, LA6 1RG

**Unique handmade jewellery and rings in precious and semi-precious materials**

We create **jewellery** exclusively for you, and to your budget. Gifts for him and her. Face to face consultations, wedding and engagement ring service and general commissions.

To make an appointment to visit us or have us visit you, call us on 07399 205505  
email: [info@macmillan-clare.co.uk](mailto:info@macmillan-clare.co.uk)



**Macmillan-Clare**  
DESIGNER GOLDSMITHS

[www.macmillan-clare.co.uk](http://www.macmillan-clare.co.uk)  
@MacmillanClare



It is really easy to exceed these and then the parcel would cost a great deal more to send via Parcel Force. It is sometimes cheaper to split a heavy parcel and send two packets.

### Dangerous Goods

To comply with national and international regulations governing the carriage of mail, and ensure that mail in transport does not present a danger to the general public, Royal Mail must restrict or prohibit certain items from their network.

So this year we will once again have to ask you what are the contents of your parcels; not just because we are being nosy or looking for gift ideas ourselves, but because there are restrictions on items containing, for example, batteries, nail varnish, perfume, aerosols etc.

Lithium batteries (the type commonly found in mobile phones and laptops) cannot be sent alone, and for international mail they must be packaged in the equipment. Beware, some countries do not permit the import of lithium batteries at all.

As always, come and ask us at the Post Office Counter for further advice.

Gill



Our Pre-Christmas Special event on Saturday 16 September turned out to be very special indeed, raising the amazing amount of £1050, taking our total fund-raising from April 2017 to £2626. Many thanks to all the people who took the trouble to support us on the morning. A big thank you to all our helpers who worked really hard before, during and after the event. Thanks to Akis and Gill for their continued support, and a huge thank you to our dear friend May for the amazing raffle prizes and more. We need your support, it is vital for Cumbrian children.

Barbara and Jack Winrow

### Burton Village Store & Post Office

<u>Opening Hours</u>	<u>Shop</u>	<u>P.O.</u>
Monday - Friday	6am - 6pm	9am - 5.30pm
Saturday	6am - 6pm	9am - 12.30pm
Sunday	6am - 12noon	Closed

#### We now stock items from more local suppliers

- Burrows** – Bacon & Sausages
- Dew-lay** – Cheeses
- Diggles** – Cooked Meats
- Greenhalgh's** – Bread, Cakes, Cream Cakes, Pies
- James Baxter's** – Potted Shrimps
- Kendal Jacksmith's** – Flapjacks
- Sue Prickett** – Marmalade & Chutneys

**Fresh Vegetables Daily**  
(orders taken - please enquire)

*And our Greek specialities*

**Award winning Greek Olive Oil**

**Other Greek Products:** Balsamic Vinegar, Dolmades, Greek Yoghurt, Gigantes, Houmous, Olives, Tapanade and now Greek Wines.



**01524 781828**

**FREE**  
Valuations



10% off sales and letting fees  
with this advert

**Carnforth Office: 01524 737727**

*Caring about you and your property*

[www.hackney-leigh.co.uk](http://www.hackney-leigh.co.uk)

# Vicar's Letter...

## Forever Love

"We don't have to live very long in this world before it becomes painfully clear that nothing lasts forever. The car we were so proud of when we bought it is spending too much time in the garage getting fixed. Those clothes we picked up on sale are now in the hand-me-down box. At home, the roof eventually leaks, the appliances break down, the carpet needs to be replaced. And relationships that we think will endure often fall apart.

Nothing lasts forever - nothing but God's love, that is. Twenty-six times we are reminded of this inspiring truth in Psalm 136. Twenty-six times the writer gives us something for which to praise the Lord, and then he reminds us, "his love endures for ever".

Think of what this means. When we sin and need forgiveness, His love endures forever. When our lives seem a jumbled mess that we can't control, His love endures forever. When we can't find anyone to turn to for help, God's love endures forever. When each day is a struggle because of illness, despair or conflict, His love endures forever. Whenever life seems overwhelming, we can still praise the Lord, as the psalmist did - for God's love is always new and fresh. No problem can outlast God's forever love!"

The above is one page from a helpful booklet called Our Daily Bread which is posted out quarterly across the UK (and beyond) from an office in Sandside. The generosity of donors and local volunteers means that no payment is required - you simply need to tell them that you'd like to receive the booklets. Contact Our Daily Bread by phone - 015395 64149, by letter at Our

Daily Bread Ministries, PO Box 1, Carnforth, LA5 9ES, or on-line <http://odb.org/subscription/uk>. If you prefer you can receive Our Daily Bread pages by e-mail or to your phone.

And if you are longing for hope and strength in times of trouble and you would like a visit from someone on behalf of the local church then we have a small team in the village who can be contacted through Yvonne Wilson on 01524 781504.

Sincerely  
Graham Burrows

St James, Burton & Holy Trinity, Holme  
The Vicarage, Glebe Close, Burton  
T: 01524 781210 M: 07740 622962  
E: vicarburtonholme@btinternet.com  
W: [www.achurchnearyou.com/  
burton-st-james](http://www.achurchnearyou.com/burton-st-james)

## TRANSPORT TO CHURCH

If anyone will need a lift to either Burton or Holme church, please contact one of the Church Wardens.

## PRAYER REQUESTS

If you would like to request prayer for yourself or for anyone else, please contact one of the Church Wardens.

## DALTON WOODLAND BURIAL GROUND

Natural Woodland Burial Ground

"Return to the Earth, naturally"

[www.daltonwoodlandburial.co.uk](http://www.daltonwoodlandburial.co.uk)

**Burton-in-Kendal: 01524 782442**

# ST JAMES' BURTON SERVICES

## Sunday 1 October

11am Morning Worship + Communion

## Sunday 8 October

11am Morning Worship

## Sunday 15 October

Harvest Thanksgiving

11am Morning Worship + Communion

## Sunday 22 October

11am Morning Worship

## Sunday 29 October

10am Joint Morning Worship at  
Holy Trinity, Holme

## Sunday 5 November

10am Joint Morning Worship with HC  
at Holy Trinity, Holme

Recent sermons can be listened to at  
[www.buzzsprout.com/61440](http://www.buzzsprout.com/61440)

Services at our sister church, Holy  
Trinity Holme, are usually at 9am each  
Sunday.

### ST JAMES & HOLY TRINITY CHURCH TELEPHONE NUMBERS

**Vicar: 01524 781210**

Wardens (Burton):

Michael Carr 781283

George Flanders 781729

Frances Roberts 781943

Wardens (Holme):

Neville Pereira 782075

Richard Anson 781294

Treasurer:

Pat Whalley 782296

Secretary:

George Flanders 781729

Organist/Choir Leader:

Kath Mills 732194

Reader:

David Mills 732194

## St. Mary's R.C. Church

Yealand Conyers

**Mass Times: Sat 6.00 pm**

Contact: Canon J Gibson

**01524 732940**

for further information

## Yealand Quakers

Yealand Meeting House

18 Yealand Road, Yealand Conyers

**Our normal Sunday Meetings for  
Worship are held from 10.30 - 11.30am**  
*Visitors are always welcome*

**We also meet on Wednesdays from  
11.30am to 12.00, and afterwards share a  
light snack of soup**

For more information call:

01524 781601 or 01524 782052

or 01524 732336

## Warton Methodist Church

Borwick Lane, Warton

Sunday Morning Service 10.00am

Sunday Night Live 6.00pm

*Various Connect Groups  
through the week*

All Stars 6-11yrs Friday 6-7pm

All Stars + 11-15 yrs Friday 7.30 - 9pm

**[www.wartonmethodist.co.uk](http://www.wartonmethodist.co.uk)**

Tel: 01524 732626

## St James' & Holy Trinity Junior Church

We are delighted to include children in our  
services and we don't mind if they make a bit  
of noise or wriggle around!

We have toys and other activity material  
available and there is a room which parents  
and children can use when you need a break.

For more information call 781210



# HISTORICAL FOOTNOTE

by Roger Bingham

## Burton Groundwork

All the early commentators refer to the shape of Burton parish and repeat observations of variable accuracy about history and geology.

Thomas Machell in c.1694 mentioned the curiosity that the parish was split by a tongue of land at Farleton which still remains part of Beetham. He further reported that Burton extended from some straggling houses at 'Holmescales in the north to Heron Sike in the south and from Dawkton (Dalton) in Lancashire in the East to Halemoss in the west two miles broad. The soil is blackish clay and affords woodland, arable and meadow - neither very fertile nor very barren. Their fuel is peat which is fetched from a place called Burton Moss about a mile from the church.' Elsewhere he noted 'the lordship of Burton has sandy soil and has much limestone in it, but no wood worth speaking of.'

A century later Thomas Pringle's report to the Board of Agriculture 'extolled' limestone as 'a uniformly esteemed rock. The whole cultivated land in

Westmorland is divided by thorn hedges many of which do not contain half an acre. But from Milnthrope to Burton and from Burton to Kirkby Lonsdale both the farms and inclosures appear to be larger and it is not rare to see a few acres of wheat.'

In 1829 Parsons and White's History and Directory made the first of a regularly repeated report, 'In 1777 the inhabitants expended some hundreds of pounds in draining a large tract of marshy ground on the west side of the town, the principal drain being between two and three miles long. Under the soil is a bed of whitish earth which it everywhere abounds with innumerable small shells of the periwinkle kind an such as appear sometimes in limestone and marble. Many trunks of oak and fir were found in the moss.' He also was impressed by the 'beautiful naked limestone mountain of Farleton Knott which resembles the rock of Gibraltar.' At Curwen Woods 'the rock was rent with fissures caused by the ebbing of copious waters.'

In 1885 the Directory of Westmorland, equally impressed, asserted that it was after Burton's main geological feature that had given its name Clawthorpe 'from the claw-marks which cover the rock.'

### Pure Essence Beauty Salon

Open to Non Members

Specialising in Waxing, Massage, Facials,  
Wedding Make Up, Shellac plus lots more

Please call Sue Shields on  
**01524 735240**

& mention Burton News to receive a 10% discount



South Lakeland Leisure Village  
Carnforth Lancs LA6 1BH

### Architectural & Building Surveying Services



PLANNING / BUILDING CONTROL APPLICATIONS  
FOR EXTENSIONS, NEW HOUSES, COMMERCIAL  
PROPERTIES INCLUDING ALTERATIONS &  
REFURBISHMENT.

Stuart McMinn BSc HND ACABE  
Tel / Fax 01524 781081 Mob. 07729 845147  
Email [stuartmcminn081@btinternet.com](mailto:stuartmcminn081@btinternet.com)  
[www.houseplansdrawn.co.uk](http://www.houseplansdrawn.co.uk)

## Holme Cricket Club

In a surprising twist to the end of the season Holme 1<sup>st</sup> XI finished 2<sup>nd</sup> and will play in Division 1 next season for the first time since 1996. Back to back promotions were achieved courtesy of victories in the last 2 games of the season along with 2 defeats for closest rivals Bare.

The first victory was against Westgate A who had no answer to the bowling of Lee Barnes (5-10) ably assisted by Alex Yates (3-12) as they were dismissed for just 55. In reply, Holme lost 5 quick wickets before skipper Liam Teasdale (24 not out) steered the side to victory accompanied by little brother Ryan (15 not out).

The final game of the season saw Holme entertain Netherfield 3<sup>rd</sup> XI. Despite a competent start by Lee Barnes (50) and Paul Duckett (27), the innings faded to a below par 140 all out. When Netherfield batted, wickets fell steadily as Barnes (4-31) and Stu Hunter (3-16) took a hold on the game and victory (and promotion) was finally achieved with 4 overs to spare as Netherfield were bowled out for 120.

So, huge congratulations are in order for skipper Teasdale in his debut season. Now for a strategy to cope with Division 1!

The 2<sup>nd</sup> XI also had some success in the final 2 games. Bare A were restricted to 88-7 as Kev Stephenson rolled back the years (and the socks that were giving him so much trouble at Shireshead) to take 5-14. Stivvy wasn't finished yet and scored 35 as Holme secured victory by 4 wickets. The finisher, John Wolfenden hit the winning run in his 15 not out.

The final game was away to champions Silverdale. Holme bowled creditably to restrict Silverdale to 125 all out with Ted Littlefair (3-12), Allan Strong (2-25) and Steve Gosling (2-15) being the pick of the bowlers. Victory seemed to be there for the taking as Magic Mike Hunter hit 49, but Holme were gradually pegged back and despite Skipper Sam making 33 not out, the team fell 1 run short and had to settle for 4 points from a losing draw.

As a result of the draw at Silverdale, Holme finished 5<sup>th</sup> in Division 4. This was a great achievement and a great testament to the work that Sam Greenwood has put in to what can be an unenviable job at times.

So the season has ended but not the work as we hope to get the tea room, bar & changing room area refurbished during the close season.

Andy Pickering



**JWK SOLICITORS**  
MORECAMBE & LANCASTER  
(EST. 1888)

**Comprehensive range of legal services**

**Do you have power of attorney?**

*If not, you need to consider making one, as new powers need to be registered before they can be used.*

**CONTACT: TONY COLLINSON**  
**TEL. 01524 416315**  
**Email: [arc@jwksolicitors.co.uk](mailto:arc@jwksolicitors.co.uk)**



**Dalton Hall**  
**Business Centre**  
**Burton-in-Kendal**

**Meeting Room Hire**

**All Enquiries 07881 930139**  
**[offices@daltonhall.co.uk](mailto:offices@daltonhall.co.uk)**  
**<http://www.daltonhall.co.uk>**

In aid of Burton-in-Kendal Playgroup

## HALLOWEEN DISCO

Friday 27 October, 6pm-8pm

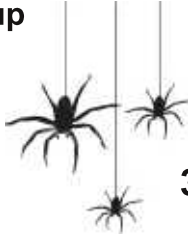
Burton Memorial Hall

£2.00 per child

*Plenty of refreshments on offer including hot dogs, tuck shop & even a bar for the adults*

**Fancy Dress Competition!**

**Ghoulish games with prizes to be won!  
Heaps of spooky fun for all the family!**



LMMES

## HALLOWE'EN NIGHT!

Ghost trains will run on  
31 October from 5.30 - 8.30pm

Burger van on site!

*Please feel free to dress up  
& remember your torches*



More info: 01524 781767 (after 2pm)

[www.lmmes.co.uk](http://www.lmmes.co.uk)



Burton Recreation Trust

## Annual General Meeting

Wednesday 4 October at 7pm

Burton Memorial Hall

**Everyone welcome!**

## OPEN CHURCH

The Parish Church of St James is open for visitors each Friday & Saturday throughout the year. Open times: 10.00am to 4.00pm. In Winter the door will be closed earlier as dusk falls. All welcome.

Burton Children's Sports Committee

## Annual General Meeting

Wednesday 4 October at 8pm

Burton Memorial Hall

**All welcome!**

## D.A.BELL LTD

Plumbing & Heating Engineer  
Gas, Oil & LPG Installation, Repair,  
Servicing & Maintenance

Bathrooms Fitted & Tiling

Gas Safe Reg No 92436  
OFTEC Reg No C3883

**Tel: 01524 781973  
Mob: 07831 231492**

## Burton Pre-School

Burton Memorial Hall

Chair: Maddy Iddon

Manager: Emma Taylor



*Offering high quality childcare for children aged 2-4 including government early education grants for 15 hours free childcare places for all 3 & 4 year olds and eligible 2 year olds.*

### Opening Times

**Monday 9am - 3pm**

**Tuesday to Thursday 9am - 12noon**

**Friday 9am - 3pm**

Our regular activities include:  
Phonics \* Forest Schools \* PE Lessons  
Gardening \* Baking \* Village Walks

*For any further information or to enquire about places in Pre-School please contact us*

**Telephone: 07917 870001**

Email: [burton-pre-school@live.co.uk](mailto:burton-pre-school@live.co.uk)  
Visit our website or join our Facebook page  
[www.burton-pre-school.co.uk](http://www.burton-pre-school.co.uk)

*We are members of the Pre-school Learning Alliance. Social Services & OFSTED registered.*

## Goad Joinery Ltd

**All aspects of joinery including:**

Renovation, Doors, Windows, Sky Lights, Flooring  
Extensions, Fitted Kitchens, Fencing  
Barge Boards & Soffits, Garage Doors  
Loft Conversions etc

**Trusted Time-Served Joiner**

*Call for a free estimate, no obligation*

**Burton in Kendal 01524 782939**



# Burton News Survey 2017

Number	Male	Female	Under 15	16-25	26-40	41-60	Over 60
1							
2							
3							
4							

Please tick the relevant boxes above to indicate the gender and age of each person responding and in the form below use their number (1,2,3 or 4) to fill in the boxes. If more than one person selects the same box please put both numbers in the box.  
(Example Below)

Editorial	1, 3	2		4	
-----------	------	---	--	---	--

Section	Always	Most	Some	Rare	Never
Editorial					
Letters					
Vicar's Letter					
Roger Reports					
Historical Footnote					
PC Observations					
Advance Diary Dates (back page)					
Swift Study Group (Bryan Yorke)					
Reports (Onion Show/Daffodil Show etc...)					
Holme Cricket Club					
Police News					
Adverts					
Groups & Society Notices					
Articles from/about Burton People					
Football Club					

*(continued over page)*

## Burton News Survey 2017 - second page

Well that is the 'what do you read in BN currently' done, and thanks to all who fill it in then send back to us (take to the Village Shop to go in the BN folder).

Now we would like to know if you read the paper version delivered to your door / collected from the Village Store, or the online PDF version with coloured photos etc. Please tick which version below, or if you read both, just tick both boxes.

Paper version

Online PDF version

The next part is 'what else would you like to see in BN', and the other side of the coin 'what would you like to see dropped from it'. Please write your comments here:

The last survey done in 2008 had some very good ideas and changes were made from your input so it is worth putting pen to paper.

Now a bit about our online version: What do you enjoy most about the online version?

	GOOD	IT'S OK	BAD
Reading it on a smartphone, tablet or PC	<input type="checkbox"/>	<input type="checkbox"/>	<input type="checkbox"/>
Seeing photos, adverts and notices in colour	<input type="checkbox"/>	<input type="checkbox"/>	<input type="checkbox"/>
Being able to access back issues easily	<input type="checkbox"/>	<input type="checkbox"/>	<input type="checkbox"/>

Have you experienced any problems using the online version? If so please describe what happened and whether you were viewing on a smartphone, a tablet, a laptop or a desktop PC.

Finally, if anyone has a burning desire to help produce BN then you would be very welcome to join the committee. If you want to volunteer please add your name and a contact number or email below and we'll be in touch. Thank you for filling in this survey.

Tel or email: \_\_\_\_\_ Name: \_\_\_\_\_

# Burton Memorial Hall Survey 2017

Much has changed in the Hall since the last survey done in 2009 so the committee felt it was time to do another to gauge the support and feelings about the hall.

Q1. Are you a hall user? Yes  No  (If not please tell us why not.)

Q2. What type of activities do you attend? (If not enough space continue in comments section overleaf.)

Q3. What are your views about the facilities provided by the Hall? (e.g. lighting, heating, acoustics, accessibility, notice boards, tables, chairs, storage, babychange)

Q4. What are your views about the individual areas of the Hall? (Main Hall, Reception, Club Room, Lobbies, Stage, Toilets, Kitchen, Car Park)

Q5. What other activities would you like to see take place in the Hall, and would you like to help set up and run an activity or group?

Q6. Do you make use of the free Wi-Fi in the Hall, and is it good enough coverage?

*(continued over page)*



## Burton Memorial Hall Survey 2017 - second page

Q7. Have you wanted to book space in the Hall and been unable to find a free slot? Please tell us whether this was a weekday or weekend, and whether it was morning, afternoon or evening.

Q8. Are there any services you would like to see using the Hall that are not doing so now? (e.g. Police drop in session, MP or councillor surgeries, etc)

Q10. Would you be interesting in helping with the running of the Hall, or helping with simple maintenance tasks such as painting walls and weeding the car park? If so please leave your contact details below and a committee member will be in touch with you.

Name: \_\_\_\_\_ Tel or email: \_\_\_\_\_

That concludes the list of questions, please make your comments as detailed as you can in the space available (use the extra space below as well if you want to make other comments or suggestions.) Thank you for taking the time to fill in the BMH survey.

This survey is being done in conjunction with Burton News so the entire centre page spread with both surveys on can be pulled out of the magazine and taken to the Village Shop to be put in the BN folder.

**Comments and extra space for responses.**



## BURTON W.I.

After a successful day at the Westmorland Show the members of Burton WI had the opportunity to see the star winning exhibits which ranged from a display depicting Cumbrian Wildlife, Crafts, a Painting, Preserves and Cakes.

Our speaker, Joan Bentley, then gave a wonderful informative display of her flower arranging skills as she blended 'Shades of Autumn' into five beautiful arrangements.'

The competition for Autumn Fruits was won by Kath Hayhurst with Stephanie Micklethwaite second.

In the raffle Eileen Kirby, Margaret Sayers, Christine Metcalfe, Helena Nixon and Hester Willink each won one of the floral arrangements produced by Joan.

At the next meeting on the 12 October the speaker will be Matt Brown on The History of Sizergh. The competition will be for a candlestick.

Helena Nixon

## Burton Children's Sports Committee

Burton Children's Sports Committee are holding their annual bonfire and firework display on Sunday 5 November at the recreation ground (MUGA) behind the Royal Hotel. There will be a pumpkin and guy competition on the night with prizes to be won, and we will be serving hot refreshments such as soup, burgers and hotdogs on the night. The bonfire will be lit at 6.30pm with the fireworks starting at 7pm. Pre-school and under are free, others £3 each or £10 a family. This is set to be a great event which we hope you will come along and support.

The children's sports committee's Annual General Meeting will take place on Wednesday 4 October at 8pm in the Memorial Hall. The committee is made up of volunteers and like all other committees we need both old and new members for these events to continue as successfully as they have done. Come along and see what it's all about and what it is we actually do for the children of Burton.



### **Jan's Pantry**

Mobile Outside Catering for all Occasions  
Barbecues • Weddings • Christenings • Parties etc.  
**A fully qualified cook at your fingertips**



**For enquiries call  
01524 781904 or  
07855 202124**

*Your Celebration Cakes  
can be done too*

### **Dave Rushworth**

**Computer Repair  
Maintenance  
Upgrade**

**Tel: 07765 954386**

**email: [dave.dezy@gmail.com](mailto:dave.dezy@gmail.com)**



The Pink Footed Geese have been arriving on the West Coast and passing over the village, some have been heading to our coast and some will have been making the longer journeys possibly across to Lincolnshire and Norfolk. Normally I get my first around the 10 September but this year my first was recorded on 14 September passing over Hutton Roof. They were followed by several more skeins over the following days. Also I have had the first wintering Snipe up on Holme Park Fell on the 16 September, I guess it won't be long now before we start to see the first wintering Woodcock, although most go off the old adage of "You see the Woodcock on the morning following the first full moon in November" and this usually bears true!

I am up with the larks! So they say, but that can't be right because most of the larks have already left us to fly to their wintering quarters on the coast, but I have still one or two which grace our fields on the sides of Farleton and, depending on the severity of the weather, have been known in milder

times to stay with us for the duration of the winter months. Also as I write, I am getting lots of Meadow Pipits and Chaffinch, Goldfinch, Linnets, Wagtails and others now moving through whilst doing their annual pilgrimage along with their young birds in tally. Most of these birds will go to the coast or further down the country to spend their winter, some will even cross our boundaries braving the seas to enter foreign lands. It has been lovely this year also to see the rare Whinchats and Wheatears which have been stopping off on Holme Park Fell to rest and feed up before the long journeys back to deepest Africa. Swallows have been great to watch and I think this year they peaked on the 15 September which tied in with other parts of the country, so from now on we might see odd birds still passing over the village but I am afraid it will be a quickly diminishing feature.

I guess at the time our magazine is dropped through the door we might just be starting to see our winter thrushes arriving. I have already had a party of six Song Thrush crossing over The Roof on Monday 18 September heading to the South West. It might be worth listening out on still nights for the Redwing with their drawn out seeeee-ip calls and the Song Thrushes with their quick fire sip calls, although I think it will probably get to the start of the second week in October before we see the

**DIGITAL TV AERIAL  
AND SATELLITE FROM  
NBC-SKYNET**  
tel 07710 400 499  
or 015395 62561  
**LOCAL-PROFESSIONAL-RELIABLE**

**Having a Clear Out?**  
We buy old wooden ladders, galvanised buckets  
baths and tubs, leather bags, old suitcases, travel  
trunks, hat and coat stands, old wire baskets  
old kitchenalia, old wooden crates and boxes  
small items of old wooden furniture  
Cash payment  
Pleasant service guaranteed  
Please contact Peter on  
**07539 290879 or 015395 62811**  
email: eigerbird@hotmail.co.uk

huge numbers arriving. Usually these will be followed by the chacking of the Fieldfares which can come through with the Redwings but more than likely will arrive maybe a week or two later and when they do have been known to pepper the skies with the (rare) flocks that can get up into the 500 plus in numbers! I'll never forget the morning back in 2009 up near Whin Yeats when I had over 20,000 thrushes pass over heading towards the North West, with some calling off to enjoy the feast of the fruits of the Lyth Valley.

The most beautiful Autumn Gentian flowers have put on a great show this year although it was very short lived, with the actual flowers opening up has been a very rare occurrence simply because we have not had the sunshine and the flowers have in the main remain closed during the recent wet weather. For those lucky enough to catch them on the few days when they have opened will have had spectacular sights with not just the purple variety on show, but also the rarer white variety, with both varieties having been seen at several places on Hutton Roof, Newbiggin areas on Farleton and, probably the best area of them all, on Holme Park Fell. I was so fortunate to have this year found a lovely plant which showed flowers ranging through all shades of colours between the purple and the white including blue as

well. Very unusual to get this and I did manage to get a photo and mark it off on the GPS to keep a check on it for future years.

If you want to keep up to date with daily records of the visible bird migration over Burton then why not check out my blog I Love Arnside and Silverdale <http://arnsidesilverdale.blogspot.co.uk/>

Bryan Yorke

## Burton Church Closure

Because St James Church needs to have its old lighting replaced the building will be closed from Monday 23 October to Saturday 11 November. During this period the church will not be open to visitors as it normally would be on Fridays and Saturdays. Sunday services will be joint 10am services in Holme and funeral services will need to take place in Holy Trinity, Holme. The churchyard will, however, remain open as usual.

## Library Coffee Morning

Please note there will be no library coffee morning for November due to holidays. The library Book Drop will operate as usual.

## CHIROPODIST HOME VISITS

Ian McCutcheon  
MSSCh, Dip. Pod. Med., MBChA

Tel. Burton 781383

## DALTON self storage

- Indoor containerised storage
- Easy Access
- Well Lit
- Secure

**Tel. 01524 782442**  
Burton-in-Kendal



# Roger Reports...

From the County & District Councils

Car parking is a perennial and frustrating issue. All villages in our Lower Kentdale Division suffer parking problems especially when pupils are 'dropped off' or 'picked up' outside primary schools. Some Burton parishioners have wondered if the current building expansion with an assumed increased in numbers might add to the difficulties outside Morewood School, although the new accommodation will be partly for infants who have previously used the Memorial Hall. Meanwhile road safety advice and reminders continued to be issued while I seek changes in road signs, check on the flashing lights warning, and the highways department consider further modification to white/yellow lines on the corner of Morewood Drive.

Even so, recent parking controversies are focused on Kendal. I am objecting to the county council's removing of disabled parking bays in Kendal Market Place. But the big row concerns the renewed attempts by SLDC's administration to replace New Road car park by a landscaped area at a reported cost of nearly half a million pounds. When first proposed over ten years ago the emphasis was on improving the appearance of the town

by opening up views towards the castle ruins. Also, it was asserted that the area was 'common land' and no one had the right to park there. As a historian of the town I am prepared to be a witness in any test case to the use of the area as a vehicle park since before 1914 without the owners being challenged. This time around, health and safety arguments are being stressed in favour of removing the car park though no accident figures have been produced. Health wise I cannot think that a noisy and emission polluted park would be conducive to physical or mental well-being. Nevertheless, my main objections are based on what I think is an unfair removal of free parking used especially by rural workers who come mainly from villages lacking convenient public transport. Moreover, as no alternative parking provision is planned, the ousted 200 or so vehicles would worsen the town's existing congestion difficulties and add to health and safety problems while inconveniencing of local people and visitors.

Meanwhile, I've checked on the county's figures on local parking penalties. In August 327 penalties were issued, including 107 in Kendal, 16 in Kirkby Lonsdale, 58 in Windermere, 22 in Bowness and one each for Grasmere, Sedbergh and Grange. At the start of September 54% of the fines

**J C Derbyshire**

Building Contractor Stonework Specialist

**Craig Derbyshire**

Tel: 01524 784840 Mob: 07967 092 465  
Email: [jcdbuilding@gmail.com](mailto:jcdbuilding@gmail.com)  
[www.jcderbyshire.co.uk](http://www.jcderbyshire.co.uk)

**freedom**  
**DRIVING SCHOOL**

Pass first time  
or receive free lessons until you pass  
Call Richard on 01524 781704  
[www.freedomdrivingschool.biz](http://www.freedomdrivingschool.biz)

had not yet been paid and I am asking about the cost - and thereby the value - of the penalties. Breaching parking regulations is no longer a criminal offence.

More seriously, problems over youth crime are worrying. The number of crimes committed by young people in the county has increased from 553 offences in 2015-16 to 611 in 2016-17. But there has been a reduction in custodial sentences for minors, from 40 in 2012 to 12 in 2016. I have asked at full council how far schools and referral centres are contributing to reducing youth crime.

Finally, all the political parties are making plans for next year's district council elections. In 2018 all SLDC seats will be contested instead of the current arrangement of having a third of district seats up for election each year with county elections on the fourth year. Ward boundaries will change. Our current Burton and Holme Ward which includes Hutton Roof, Lupton and Preston Patrick will be joined by Preston Richard (Endmoor), Sedgwick and Stainton. There will be elections for three candidates which, for example, could mean that if Conservatives, Labour, Greens, UKIP and Liberal Democrats, all contest the seat voters would have to choose from 15 names on the ballot paper. We'll see if the new

system will add to democracy or, alternatively, to voter fatigue!

All the best,  
Roger

Councillor R.K. Bingham  
The Smithy, Ackenthwaite,  
Milnthorpe, LA7 7DH  
Tel: 015395 63694  
roger.bingham@cumbria.gov.uk

## Christianity Explored

What's the best news you've ever heard? A friendly and informal group for those who would like to explore the Christian faith and the man behind it all. A few Tuesday evenings beginning on 17 October. Please contact Graham Burrows for more info: 01524 781210 vicarburtonholme@btinternet.com

## A unique opportunity

### Please come along

On 8 October from 6.30-8.00pm at Holy Trinity Church in Holme, John and Poppy Spens will be talking about their charity *The Brickworks* which is helping South Sudanese people made homeless by a forgotten civil war and sheltering in refugee camps in Uganda. All welcome.



**THE BAY BLIND COMPANY**  
PLEATED ROLLER ROMAN  
VENETIAN VERTICAL  
VELUX

Each blind is measured and manufactured individually, and fitted personally  
Commercial and Domestic : Evenings and Weekends  
**David or Sandra**  
Phone/Fax 01524 781149 Mobile 07957 343071  
2 Boon Town Burton Carnforth Lancs



**HALE GARAGE CO**  
(Practical Automobile Engineers)  
*Established over 70 years*  
**Main A6 Road, Hale**  
**New & Used Car Sales Service & Repairs**  
Full Dealer Computerised Diagnostics Equipment  
Petrol & Diesel MOT Testing. Body Repairs, Tyres  
Batteries, Exhausts & all your Motoring needs  
**Free collection or loan car service**  
☎ **015395 62173 / 62839**

Age UK South Lakeland will be having an information table at the next Coffee Morning on Monday 2 October at 10am. Come and have a browse!

Men's Sewcial - Gentlemen, would you like to learn how to: sew on a button, turn up a hem, mend a hole in a pocket or use a sewing machine? If so, then come along to the Gateway Centre on Gillinggate in Kendal on Monday 6 & 13 November from 2pm- 4pm and have a go. All equipment and materials are provided. These friendly and informal sessions are free, but please book a place in advance. Please ring 01539 728118 for more information.

If you would like further information about any of the above or any of the services which Age UK South Lakeland can offer older people, or if you would like to volunteer for us, please contact us on 01539 728118.

### LIBRARY COFFEE MORNING

**Monday 2 October**  
**10am - 11am**  
 Burton Memorial Hall



### BOOK DROP

**First & Third Monday**  
**of each month**



**10am - 11am**



**Club Room**  
 Burton Memorial Hall

## Editorial...

No editorial column this month as we have so much else to bring you that there isn't space for an Editorial too! We'll be back with one next month, all being well!

Meanwhile, please do complete & return our surveys (see centre pages) - both BN and the Memorial Hall committees want to hear your views and suggestions.

*Anne & Barry*

**St James' Church**

**Please join us for**

**Afternoon Tea**

**With a quiz or two and  
 time to chat**

**Wednesday 18 October**

**2.00pm to 3.30pm**

**Burton Memorial Hall**



**Everyone welcome!**

### Annual Gift Subscriptions

If you know of anyone who may like to receive BN regularly each month, why not buy them an Annual Gift Subscription? For £12 within the UK they will receive a copy of BN each month (11 copies per year). A great way for family, friends and former residents to keep in touch with what's happening here in Burton. Anyone interested should contact BN at the address in the box on page 2.





## What's On at the Heron Theatre Beetham

Registered Charity No. 501134

### **Sunday 1 October 2.30pm** **THE MOWBSKI QUARTET**

The Mowbski Quartet, a young and enthusiastic ensemble formed in 2016, comprising recent graduates from the RNCM, winners of the Hirsch prize for chamber music. Performing works by Haydn, Ligeti and Schubert.  
Royal Northern College of Music

### **Friday 6 October 7.30pm** **The Other Side of Hope (Toivon tuolla puolen)** (Finnish - subtitled) **(2017) [12A] 100 mins**

This cuttingly poignant comedy, begins with a young Syrian asylum seeker emerging from a coal pile in Helsinki's industrial port. Khaled (Sherwan Haji) has wound up here by accident, after escaping violent persecution by jumping aboard a freighter in Eastern Europe. Khaled, wanting to do things by the book, hands himself in as an illegal migrant, he checks in to a Reception Centre and is grilled about his journey to Finland from the rubble of Aleppo. Kaurismäki manages to bring a smile back to our faces, let alone the torrents of laughter, later on, that his film manages to unleash.

### **Friday 13 October 7.30pm** **The Wind in the Willows:** **A Folk Opera**

Join Ratty, Mole, Badger and of course the irrepressible Mr Toad, as they embark on various adventures – on the river, on the road and in the dark and dangerous Wild Wood. Using traditional English folk melodies set to new lyrics, the four musicians paint a vivid picture of Grahame's world – from the humble

comfort of Mole End to the grandeur of Toad Hall. GreenMatthews Touring.  
<http://www.greenmatthews.co.uk/shows/windinthewillows/>

### **Thur 19 - Sat 21 October at 7.30pm** **Matinee Saturday 2.30pm** **Beyond Words**

theCompany present a brand new piece conceived and written by Ginny Scott and Sammy Clarke. 'Beyond Words' is a celebration of words in all their forms and explores the power of words - to entertain, to educate, to amuse, to encourage and to inspire. This will be an evening of drama, poetry, prose, and song - all created by some of our most brilliant literary figures. There will be scenes from plays by Shakespeare and Shaw, Dylan Thomas and Alan Bennett and there will be songs by great wordsmiths such as Cole Porter and Stephen Sondheim.  
theCompany

### **EXHIBITIONS**

Open for viewing on Fridays 10am - 12noon and from 45 minutes prior to all performances

**1 September to 6 October**  
Jill Colquhoun of Warton  
"Tranquil Land"

**13 October to 11 November**  
Duncan Ibbotson of Morecambe  
"Pastel Reflections"

### **Theatre & Music:**

**Non-members - £12**  
**Members - £10 U18s - £5**

**Film - £5**

**Doors open 6.45pm. Shows start 7.30pm.**  
**24 hour booking: tel: 015395 64283**  
**book online: [www.theherontheatre.com](http://www.theherontheatre.com)**  
**or pay at the door**





## Holme & District Photographic Society Meetings

**Friday 6 October**  
LCPU Print Folio 1

**Friday 13 October**  
Summer Open Comp (Dpi)

**Friday 20 October**  
Moments in Monochrome  
Speaker: Neil Hulme  
Entries Autumn Open Comp

**Friday 27 October**  
My Favourite Images

**All meetings start at 7.45pm**  
Burton Memorial Hall

*For more information visit*  
[www.holmeps.co.uk](http://www.holmeps.co.uk) or call  
01539 564345 / 01524 241964



## Holme & District Local History Society

**A Mansion Fit For Demolition**  
the Story of Grizedale Hall

**Speaker: Dr Suzanne Tiplady**

**Monday 16 October 7.30pm**  
Burton Memorial Hall

*Visitors welcome at indoor meetings*  
<http://localhistory.burtonweb.org.uk>

## BORWICK & PRIEST HUTTON GARDENERS' CLUB

**Plants to Extend the Season**

**Speakers: Sue Gillon & Marguerite Hughes**

**Tuesday 24 October 7.30pm**

Borwick & Priest Hutton Memorial Hall

**For more information please contact**  
Diane Sunderland on 01524 782111



## Burton W.I.

**The History of Sizergh**  
Speaker: Matt Brown

**Thursday 12 October**  
7.30pm at Burton Memorial Hall

Competition: A Candlestick  
Hostesses: Margaret Sayers, Glenis Smith

*More info from Hon. Sec.*  
Helena Nixon 01524 781048

## The King's Arms, Burton

**1 OCT ANNUAL ONION SHOW**

**17 OCT NATIONAL PASTA DAY**  
Italian Food Night from our specials board

**20 OCT FROM 6PM**

**FISH & CHIP SUPPER NIGHT IN AID OF RNLI**  
a donation from each Fish and Chips will be donated  
by us, please feel free to add your own donation.

**GREAT FOOD! GREAT BEERS! & GREAT ROOMS!**

**0 1 5 2 4 7 8 1 4 0 9**

## Holme & District Flower Club



### Inspirations

**Speaker: Pat Crichton**

**Monday 2 October at 7.30pm**

**Preston Patrick Memorial Hall**

Please contact Carol on 015395 61454  
(evenings) or Dot on 01524 781492

## Arts Society Lunesdale

*Formerly the Lunesdale Decorative & Fine Arts Society*

### Gilded Glories

**The Fascinating History of Gilding**

**Speaker: Joanna Mabbutt**

**Tuesday 17 October at 2.15pm**

**Borwick and Priest Hutton Memorial Hall**



## Burton in Kendal Art & Craft Society

**Workshop: Fabraform (dimensional art)**

**Gill Slater**

**Saturday 7 October 7.30pm**

*May involve small extra charge for materials*

### Friday Art Group

**Friday 9.30 am - 12 noon**

**Club Room BMH**

### Monday Craft Group

**9 October**

**2.00pm - 4.00pm**

**Club Room BMH**

### Contacts for Info:

**Kath Hayhurst, tel: 781613**

**& Paula Firth, tel: 781984**

[www.burton-in-kendalartandcraft.weebly.com](http://www.burton-in-kendalartandcraft.weebly.com)



## Burton Fellwalkers

### Walks

**Sunday 1 October 1pm**

Rosthwaite Heights 7 miles

Leader: Cecilia Hunt

**Wednesday 18 October 1pm**

Staveley \*\*\*

Leader: Clive Horsford

**Saturday 21 October 8.30am**

Gaisgill Loop 10 miles

Leader: Mary Bullimore

All walks:

Meet in the Memorial Hall car park

\*\*\* less than 5 miles at a gentle pace

Visitors £2.00

Membership £8 from Jan 1<sup>st</sup> yearly

More info from the secretary,

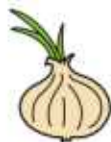
Kath Kirkman, on 781245

or visit our website:

<http://fellwalkers.burtonweb.org.uk>



## 41st Annual Burton Onion Show Sunday 1 October King's Arms



### Class No. List of Classes.

1. 3 Dressed Onions
2. 3 Leeks
3. 3 Onion Sets
4. 2 Cabbages
5. 3 Gourds
6. 3 Beetroot
7. 3 Carrots
8. 3 Salad produce
9. 3 ind' vegetables
10. 5 ind' vegetables
11. Heaviest Onion
12. Heaviest Veg
13. Novice Class-any veg
14. 5 Dessert Apples
15. 5 Cooking Apples
16. Pot Plant
17. Vase of Flowers
18. Vase of Dahlias
19. 3 Chrysanthemums
20. 3 Poultry Eggs
21. Chocolate Cake
22. Fruit Pie
23. Loaf of Bread
24. Novelty Cake
25. Swiss Roll
26. Tray Bake
27. Homemade jam
28. Homemade chutney
29. Best worst effort.



### Children's Classes.

Up to yr 2 and yrs 3-6.

Scarecrow (any size)

Fruit and Veg Animal

A Face on a Paper Plate

4 Decorated cup cakes

Entries in by mid-day.

Auction starts at 2pm.

Numerous top class Lots and Promises.

Raffle and children's competitions.

Food and drink available all day.

Children's entertainment.



(Anything is considered in this class)

Proceeds to Cancer Care, Burton Children's Sports Committee, and other worthwhile local causes.

Many thanks in anticipation of your support.

## AN EVENING WITH TIM FARRON

Come and hear Tim Farron, MP for Westmorland and Lonsdale, talk about his life as a Christian.

**Tuesday 3 October  
Holy Trinity Church, Holme  
at 7.30pm**

Free entry. All welcome.

## Burton Independent Art

**Thursday Mornings  
9.30am - 12 noon  
Burton Memorial Hall**

**New members welcome!**

*More information from  
Judith Ellis 781057*



## Ballet Be Fit

Dance inspired shaping & exercise class  
Great toning and strengthening

**All welcome**

no previous ballet experience required

**Every Tuesday 7.15pm - 8.15pm**  
**The Gatehouse, Tanpits Lane**

Limited availability for our next 10 week block of classes, so book soon! £40 for 10 weeks

For further info contact Laura Sandham

[laura.sandham@balletbefit.com](mailto:laura.sandham@balletbefit.com)

or book with Annwen Sisson 07785 954525

## Circuit Training

**Mondays 7.15 - 8.15pm**

Burton Memorial Hall Main Hall

**Wednesdays 7.00 - 8.00pm**

HIIT

Burton Morewood School Hall

**Fridays 6.15pm - 7.15pm**

Burton Memorial Hall

Reception Room

*Improve your Strength & Endurance*

*Cardio-Vascular System*

*Body Composition & Flexibility*

**For further info call John 01524 781707**

## Table Tennis

Each Thursday the Table Tennis Club hold two sessions.

Session 1 is for youngsters at 5.15pm till 6pm, this will be coaching. Bats and balls supplied. £1 per week

Session 2 is for anyone who wants to give Table Tennis a go, no matter what standard. 6pm till 7pm. Bats and balls supplied. £2 per week.

Any enquiries to Martin on 07740 933463.

## LADIES BADMINTON

Ladies Badminton meets in the BMH every Tuesday from 1.30pm - 2.30pm. If anyone would like to join the group please ask for more details from Stephanie Micklethwaite on 781073.

## Kirkby Lonsdale Netball Club

**Queen Elizabeth School Sports Hall**

**Thursdays: 7pm - 8:30pm**

For fitness or fun, competitive and non-competitive players.

All abilities welcome

come along and try the first few sessions for free!

## Kirkby Lonsdale Junior Netball Club

Are you a budding player?

If so, then we would like to see you at our junior netball training!

**Thursdays: 6pm - 7pm**

**Queen Elizabeth School sports hall**

**Kirkby Lonsdale**

Open to all players of all abilities between years 6-9

(please wear suitable clothing and trainers)

£10 membership fee for the full year

For more information contact:

[k.l.n.c1@outlook.com](mailto:k.l.n.c1@outlook.com)

## Burton Crown Green Bowling



We meet every Monday night from about 6.30 until 8.00 (ish) from about mid-March, and anyone wishing to try their hand will be more than welcome. More details from David Raynor, Secretary, tel: 01524 734375.



**Girlguiding UK**  
*girls in the lead*

## Burton in Kendal Rainbows Brownies & Guides

If you or your daughter would like to know more about joining or volunteering please call 0800 169 5901 or visit [www.girlguiding.org.uk/interested](http://www.girlguiding.org.uk/interested)

**GUIDES HAS SPACES NOW!**

## **BURTON AND HOLME YOUTH CLUB**

Open to Years 7-11

Meets Friday evenings during term time

**Clawthorpe Hall Business Centre  
from 7.30pm until 9pm**

Contact for more information:  
Mark Elliott on 07592 080218  
or e-mail [lintonell@gmail.com](mailto:lintonell@gmail.com)

## **Milnthorpe Library Opening Hours**

Monday: 2pm - 6pm  
Tuesday: Closed all day  
Wednesday: 2pm - 6pm  
Thursday: Closed all day  
Friday: 10am - 1pm & 2pm - 5pm  
Saturday: 10am - 12.30pm

Phone no: 015395 63040  
email: [kendal.library@cumbria.gov.uk](mailto:kendal.library@cumbria.gov.uk)

Phone ahead before visiting in case of unforeseen closures.

## **HOLME SOCIAL CLUB**

Tel: 01524 781936

**Friday 13 October  
ACOUSTIC NIGHT  
from 8.30pm**

All Acts Welcome  
*A Great Chance to try out new material*

**Saturday 28 October  
Strawberry Fields**

*Please see posters for more details*

**Everyone most welcome  
Come and support your local club**

**Opening Times:**

Sun – Thurs 8pm – 11pm  
Fri & Sat 8pm – 12 midnight  
Entertainment Nights open at 7.30 pm

*You can also come into the club even if you are not a member and pay only £1*



**1<sup>st</sup> Burton-in-Kendal Junior Section  
meets on Thursdays 6pm-7pm at  
Burton Morewood Primary School**

*Come along!*

**For more info, tel. 781445**

## **Rory McLeod in Concert**

A one man soul band, poet and storyteller

**Saturday 4 November 7.30pm**

**Holme Parish Hall**

**Tickets £12.50**

**by phone 01524 582394  
or from Holme Post Office  
or via [www.lyonevents.co.uk/](http://www.lyonevents.co.uk/)**





**ADVERTISE YOUR UNWANTED  
ITEMS FOR FREE**

**3 lines max. per person per issue**

Swap Shop or For Sale adverts are included subject to available space & must include a phone number. Text for advert should be put into a sealed envelope marked BN Sales & Swaps & be left at the newsagents or may be emailed to us.

**Age UK South Lakeland**

**BURTON LUNCH CLUB**

The Burton Lunch Club meets on the 2<sup>nd</sup> Wednesday of every month in the Kings Arms, Burton.

The club is open to anyone aged 55 or older. To join the club and book your lunch please contact Mrs Margaret Prady on 01524 781195.

**Meals on Wheels**

This service has been available for many years and offers 3 meals a week, on a permanent or temporary basis, delivered by a group of dedicated volunteers, all resident in Burton.

If anyone would like further information on the service please ring Stephanie Micklethwaite (Co-ordinator) on 01524 781073.

**List your event or group in BN for free!**

Send the details to editor@burtonnews.org.uk

**Burton in Kendal  
Parish Council**

**Meetings**

**3<sup>rd</sup> Thursday of every month  
7.30pm in the Memorial Hall**

**Meetings:**

Members of the public are always welcome to observe. Each meetings includes an OPEN FORUM where parishioners may raise matters of concern to them.

**Planning applications:**

Parishioners are asked to ensure they notify the PC as well as the planning authority of any comments or objections they have about any planning application within the parish.

**Agendas, Minutes & Contacts:**

Are available on the PC notice board outside the Memorial Hall, on the PC website, or on request from the Parish Clerk.

**Website:**

Documents relating to the PC may be downloaded or read online here: [www.burton-in-kendal-pc.gov.uk](http://www.burton-in-kendal-pc.gov.uk)

**For further information, contact:**

The Clerk - Christine Davidson on 01524 782694

**Next Meeting:**

The next Parish Council Meeting will be **Thursday 19 October at 7.30pm** in the Burton Memorial Hall.

**Cancer Care Cafe**

**Last Friday of every month**  
at Slynedales, Slyne Rd, Lancaster  
(beside Beaumont Bridge)

**Open for Tea and Coffee  
10.00 am - 12 noon**

Free Parking. Everybody Welcome!  
**Further details from 01524 381820**

## Burton-in-Kendal Voluntary Car Scheme

If you need transport to hospital, doctor, dentist, optician etc please contact Lynne Herd on 781905. When she is away please contact Peter or Kathryn Smith on 782198. (If you could spare some time as a driver you would be most welcome, please contact Lynne or Peter for details.)

### **Child Health Clinic**

1<sup>st</sup> Wednesday of each month  
10.00 -11.00 am

No appointment necessary

Health Visitor: Shirley Bennett 015395 64887

### **OUT OF HOURS PHARMACY SERVICE**

## **Ash Trees Pharmacy**

Market Street, Carnforth

**Monday to Friday 7am to 11pm**

**Saturday 8am to 6.30pm**

**Sunday 8am to 6pm**

**Tel: 01524 727877 - Fax: 01524 730421**

Cumbria County Council Highways Hotline

# 0300 303 2992

to report road, lighting or pavement problems

## Useful Phone Numbers

Burton News Editors	01524 781306
Burton Post Office	01524 781828
Morewood School	01524 781627
Dallam School	015395 65165
QES, Kirkby Lonsdale	015242 71275
CrimeStoppers	0800 555 111
Police non-emergency	101
Kendal Library	01539 713520
Kendal Hospital	01539 732288
Lancaster Hospital	01524 65944

## Council Switchboards

Cumbria CC	01228 606060
South Lakeland DC	08450 504434

## **Civil Registration Services Births, Marriages, Deaths**

Registration of Births and Deaths is overseen by the Kendal Registrar's Office, based in County Hall, Kendal. Telephone 0300 303 2472 or email [registrationservice@cumbria.gov.uk](mailto:registrationservice@cumbria.gov.uk)

Registrations may also be undertaken at Milnthorpe and Kirkby Lonsdale Libraries by appointment only, contact the Kendal Office to arrange an appointment. To arrange a marriage contact the Kendal Registrar. Opening times Mon - Fri, 9.00am to 4.30pm.

## **SLDC Recycling Information**



**Andy Vickers**

Customer Contact Centre

on **01539 733333**

or by email to:

[recycling@southlakeland.gov.uk](mailto:recycling@southlakeland.gov.uk)

### **Waste Collection Dates**

[www.southlakeland.gov.uk/  
bins-and-recycling/collection-calendar/](http://www.southlakeland.gov.uk/bins-and-recycling/collection-calendar/)



## **HELPLINES & LINKS**



**BULLYING: 0808 800 2222**

[www.bullying.co.uk](http://www.bullying.co.uk) (at work, school, online)  
[www.kidscape.org.uk](http://www.kidscape.org.uk) (childhood)

**CHILDLINE: 0800 1111** (under 18's)

**NSPCC: 0808 800 5000**

[www.nspcc.org.uk](http://www.nspcc.org.uk) (children at risk)

**SAMARITANS: 116 123**

[www.samaritans.org](http://www.samaritans.org)

**SHELTER: 0808 800 4444**

[england.shelter.org.uk/](http://england.shelter.org.uk/) (homelessness)

**STONEWALL: 0800 050 2020**

[www.stonewall.org.uk](http://www.stonewall.org.uk) (LGBT+)

**See us online with colour photos!**

**Burton News Website**

**[www.burtonnews.org.uk](http://www.burtonnews.org.uk)**

# ADVANCE DIARY DATES



**Annual Onion Show**, Sunday 1 October, King's Arms  
**Burton Rec Trust AGM**, Wednesday 4 October 7pm, BMH  
**Children's Sports Committee AGM**, Wednesday 4 October 8pm, BMH  
**Scrumping Saturday**, Saturday 14 October 12noon - 3pm, BMH  
**Parish Council Meeting**, Thursday 19 October 7.30pm, BMH

**Don't forget that clocks go back an hour at 2am on Sunday 29 October!**



**Rory McLeod in Concert**, Saturday 4 November at 7.30pm, Holme Village Hall  
**Annual Bonfire and Fireworks**, Sunday 5 November 6.30pm MUGA  
**WI Coffee & Mince Pie/Mulled Wine Morning**, Sat 18 Nov 10am-11.30am BMH  
**Xmas Bingo**, Thursday 23 November 6.30pm, BMH  
**Xmas Bingo**, Thursday 30 November 6.30pm, BMH

**Christmas Cracker Coffee Morning**, Sat 2 December 10am to 12noon, BMH  
**Children's Xmas Parties**, Sunday 3 December BMH  
**Xmas Bingo**, Friday 8 December 6.30pm, BMH  
**Xmas Bingo**, Friday 15 December 6.30pm, BMH



**Add your village event to our back page listing!**  
**email us with the details... [editor@burtonnews.org.uk](mailto:editor@burtonnews.org.uk)**

**BMH = BURTON MEMORIAL HALL**  
**BMS = Burton Morewood School**

**BSC = Burton Sports Committee**  
**BRT = Burton Recreation Trust**

THE VIEWS EXPRESSED WITHIN BURTON NEWS ARE NOT NECESSARILY THE VIEWS OF THE EDITORIAL COMMITTEE

PRINTED BY BAYTYPE, MORECAMBE :: [WWW.BAYTYPE.CO.UK](http://WWW.BAYTYPE.CO.UK) :: 01524 850056