

## INSIDE

Letters  
pg 2

Outdoors  
pg 4

SLDC/CCC News  
pg 6

Going Green  
pg 8

An Opinion  
pg 10

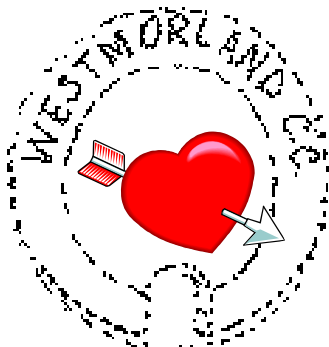
Historical  
Footnote  
pg 16

Church Updates  
pg 20

Editorial  
pg26

Community Info  
pg 27

What's On?  
pg 24/25 &  
back page



**Kings Arms**

Wednesday 13 February  
7.30pm for 8.00pm start

**MACMILLAN CANCER SUPPORT**

Please Support This Event

# BURTON NEWS

THE VILLAGE NEWSLETTER

February 2008

Issue 167



*Kerry  
Hooligans*

## Burton Memorial Hall Feb 23



Tickets £10 (limited to 150)



See page 23  
for how to get  
YOUR tickets!



Dear BN

## REFLECTIONS

As one year draws to a close and a new one begins, inevitably, we tend to recall events of the recent past, whether it be the Queen's Diamond Wedding; the death of a 'pop' star; or the global devastation in the wake of War, Flood, Famine and Accident.

Nearer to home, however, I find myself contemplating the non-dramatic, taken-for-granted aspects of village life which sustain our community... having fresh milk delivered to our doorsteps, the village store; the Post Office, Burton Butchers and Bakers, all run by those who do not spare themselves in their ongoing willingness to provide us with standards of excellence.

Remembering, too, the life-saving emergency help we received from the Burton First Responders some years ago, my thoughts now turn to our Community Volunteer Drivers, on whose services I have drawn considerably during the past year. Without exception, the drivers provided not only safe transport, but also companionship and extraordinary patience when called upon to endure many longer-than-average periods of waiting.

For this we owe a debt of gratitude to Lynne Herd, who is also the driver who, with enviable calm, co-ordinates the availability of other volunteer drivers, despite the fact that, surely, her telephone rarely remains silent.

To these, and many others who work unobtrusively in support of our community, whether in a secular or religious context, I should like to express my thanks.

Celine Dawson

# MO WITHAM

## Painting Decorating

Any Size of Job  
Completed To YOUR  
Satisfaction

**PHONE: BURTON IN KENDAL  
01524 781447**

Hello again,

**Kia Ora Ano!**

The last time I wrote was 12 years ago, thanking everyone for their hospitality, and writing about my experiences while living in Burton and attending QES in Kirkby Lonsdale. In September I finally returned to show my husband where I spent a winter during my 7<sup>th</sup> form year (year 13.)

We were greeted by the sun, which stayed with us the whole 3 days. My husband, Ron, was impressed, as when we visited his host family in Holland, it was as he remembered it. Windy with at least some rain during the day.

We arrived the weekend of David and Teresa Harbach's 50<sup>th</sup> wedding anniversary. Unfortunately we had to leave on the Saturday night, so couldn't meet many of their friends. It was great to see the Barges again. It almost seemed like I had only been away for a short while. Everyone was looking so healthy.

I was asked what is different about the village... Ron and I went for a walk one morning, found the multi purpose court, that looked new, and seems like a great asset for the village with the kids and primary school. Other than that, the butcher has a flash new shop, with the bakery. The hairdresser has gone, and the post shop, which I regularly visited, has merged into the dairy, with the best thing ... an ATM machine inside!

I am wondering where everyone is going, as there are so many houses for sale, and it appears that everyone is or has done up their bathroom.

I will always be thankful to the people of Burton, that made me feel welcomed, and also in debt to the Barges for including me in their family, and feeding me!  
Ka Kita Ano Aroha

Heather, New Zealand

---

Dear BN

**Have you heard...**

About Emergency Data Link? This is a voluntary and free scheme for anyone living at home to make essential information readily available to the emergency services should they suffer an accident or sudden illness. Your details, i.e. name, doctor's name, relevant illnesses, allergies, medication and contact addresses are put in a clearly labelled container which is kept in your fridge door. There are two matching labels: one for the outside of the fridge and the other for the inside of your front door to alert the emergency services.

I have five containers left and I will gladly pop them round to you if you give me a ring. Alternatively you can ring Age Concern Kendal who are our local distribution centre. Doctors' surgeries should also have them.

Alison Murphy, tel: 781007

---

*Please would readers note that letters for these pages must include a valid name & address. This can be with-held from publication on request. We will not publish any anonymous letters, or material which, in the opinion of the Editorial Committee, is of an offensive or defamatory nature. BN reserves the right to edit letters & articles in the interests of magazine space.*

## **J.C. DERBYSHIRE**

**BUILDING AND LANDSCAPING  
TRADITIONAL STONEMASONRY  
SPECIALIST**

**15 ST JAMES DRIVE  
BURTON-IN-KENDAL**

**TEL: 01524 784840  
MOB: 07967 092465**

# **Thanks!**

A huge thank you to the First Responders who helped my mother, Margaret Ratcliffe of Burton Park, when she had a heart attack on New Year's Day. They were there within three minutes of calling 999. What an amazing service to have in the village! She is now recovering. Thank you.

Sue Jobbins

**\*\*\*\*\***

Can I say a huge thank you to the First Responders, namely George Isherwood and Alan Wren (that guy can out run a greyhound!) for coming to my mother's - Lesley Foley - aid so fast. I also need to thank Eddie and Jackie Freeman and Carl Atkinson for everything they have done. I owe you one.... a big one! Mum came home on Friday 18 Jan after a nearly a fortnight's stay in hospital and is recovering at home. Thank you to everyone who sent cards and flowers, and to Akis and Gill at the shop, for being 'just up the road.'

Viv Preston

**\*\*\*\*\***

We would like to thank everyone the cards, flowers and expressions of sympathy that we received following the death of Helen's mum on 5 January. Your kindness has been of great comfort to us.

Helen, Ken, Louise and Rachel Dawson.

**\*\*\*\*\***

## **COLIN HARPER BUILDING SERVICES**

- |               |              |
|---------------|--------------|
| * alterations | * extensions |
| * plastering  | * roofing    |
| * patios      | * stonework  |
| * drainage    | * tiling     |

**Quality work at competitive prices  
Free estimates**

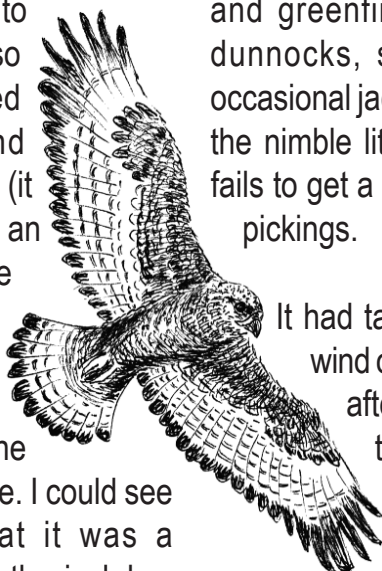
**Tel: 01524 781194**

**Mobile: 07880 925170**

**39 Trinity Drive, Holme, Carnforth, LA6 1QL**

# OUTDOORS

Much the most vivid episode outdoors which I was lucky enough to see last month was in Trowbarrow Quarry, near Silverdale, on the second day of the new year. The place was tranquil. Twenty jackdaws were perching on the mature trees overlooking the golf course. Four rock doves were flying round in that way which looks like sheer joy of life, or are they trying to keep warm? They must be using up so many calories that they'll need to feed again to keep up their energy and resistance to the cold night coming on (it was an hour before sunset). A bird with an unusual urgent wing-beat flew in above the main cliff on the Yealand side - a crow? Too quick and not dark enough. A peregrine? Slightly too chunky, not arrowy enough. It alighted on the rim of the crag and was no longer a mere silhouette. I could see from its dun-and-buff plumage that it was a sparrowhawk. It took off and flew over the jackdaw roost, at which a clucking arose and a few birds fluttered into the air. The hawk flew off into the east wind, out of sight, and I thought, it will reappear as the wind boosts it back again towards the quarry. So it did, and as soon as it came into sight a buzzard planed in from the north. When the smaller raptor came too near it, the big bird lunged at with a twitch of its broad wings and the sparrowhawk flew off south-east, out of sight. Had it not enjoyed buzzing the buzzard? Had it been punching above its weight? Or did it know that

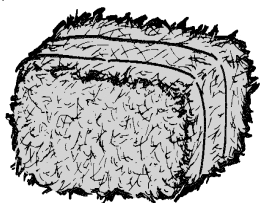


there would be little rodents for the taking along the field hedges near Leighton Moss?

For months there had been hardly a bird to be seen in our garden. A blackbird foraging in the mulch, a robin perching a few feet away as we dug over a bed or planted crocus and tulip bulbs, and that was about it. As soon as I started to fill the bird-feeders again, during the frosty spell from December 10 to 23, the whole troupe was there, blue, great, and coal tits, chaffinch and greenfinch and goldfinch, house sparrows, dunnocks, starlings, songthrush and even the occasional jackdaw. It looks huge and ungainly beside the nimble little ones and flusters round the feeder, fails to get a clawhold, and flies off looking for bigger pickings.

It had taken the flock about half an hour to get wind of the renewed supply of sunflower hearts, after eight months without this supplement to their own wild food. How does the word get round? Does one bird see the feeders and all the others follow it in? Presumably they go round and round the village, from one hospitable garden to another. At all events it's good to see the colourful throng again, after their months of rearing a brood, or two or even three broods for some species. The blue tits especially had looked drab and dishevelled on rare sightings through summer and autumn. Now their blues and yellows, and the sunset-flush on the breast of the male chaffinch, are spruce and bright again as they gear up for the mating season to come. Even before Christmas the blackbirds were hotting up their sexual politics and the

Hay for sale, small square  
this seasons, barn stored  
excellent quality, can deliver locally  
(minimum 20 bales delivered)



£3 per bale  
phone  
Graeme on  
**07887 623580**

## PLANS DRAWN

McMINN CONSULTANCY SERVICE(N.W.)Ltd  
STUART McMINN BSc HND ABEng

**PLANNING/BUILDING REGULATION APPROVALS  
FOR NEW HOUSES, COMMERCIAL PROPERTIES  
EXTENSIONS, ALTERATIONS & REFURBISHMENT**

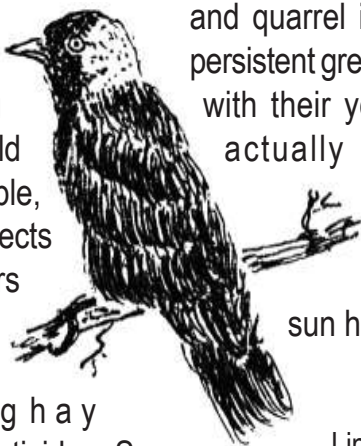
**Architectural & Building Surveying Services  
Planning Supervisors. Land Surveying  
Farm & Barn Regeneration**

**Tel 01524 781081 Mobile 07729 845147**



cock birds were rushing at each other competitively while the self-effacing hen birds foraged peacefully among the withered flowerbeds.

I had left off feeding the birds in the spring and summer out of a feeling that we should interfere with wild animals as little as possible, so when their natural food is abundant - insects and their larvae, seeds from hay and flowers - they should be left to fend for themselves. It's true that we are constantly interfering anyway - wiping out their food by mowing h a y before it seeds and by heavy use of insecticides. So maybe I'm wrong. At any rate it is delightful to see them all again. The fieldfares duly arrived, after the finish of the rowan harvest in Norway, and stripped our holly of its berries before moving on to East Anglia. (We saw one in October 1993 on our way from Orkney to Shetland. It alighted on the deck of the ferry, after dark, and was carried back northward when all it wanted was to fly south to a warmer latitude.) Perhaps a redwing, that rare thrush with a redness on its side like a bloodstain, will appear before the winter is out. In the meantime all the usual birds are jostling in their eagerness to get at the sunflower hearts. Greenfinches are the most avid feeders and can perch, feeding continuously, for ten minutes at a time. When two of them are on the perches at either side of one feeder, they look perfectly twinned, like the caged lovebirds on the floor of Tippi Hedren's car at the start of Hitchcock's film *The Birds*. Fifteen years ago the chaffinches didn't know how to perch on the hanging feeders and had to fly down to the ground and pick up the leavings. Now a few of them can perch for a few



seconds before the more adept birds oust them - sparrows, which feed briefly before flying off to chatter and quarrel in the hawthorn tree; the powerful and persistent greenfinches; and the glamorous goldfinches with their yellow, black, and crimson heads, who actually prefer to be on their own, though less solitary than the robins, who come out when all other birds have gone off and will often be there at gloaming after the sun has set.

*David Craig*

Line drawings in *Outdoors* are by Kath Hayhurst

---

## BURTON WOMEN'S INSTITUTE

We are looking for new members to join us. We meet on the second Thursday of each month in Burton Memorial Hall at 7.30pm.

We offer fun and friendship, interesting speakers and social events, and the chance to try new hobbies and interests. Visitors are welcome - why not come and "try us out"? We look forward to seeing you.

For more details contact Helen Nixon, Hon. Sec., on 01524 781048

---

## CHILDREN'S SOCIETY BOX HOLDERS

Many thanks to all box holders who helped to raise £277 for the Children's Society.

Thelma

### **The Honey Tree Chinese Restaurant** **293 Marine Road Central, Morecambe**

Open 7 days a week for lunch  
and evening meals

**Modern authentic Chinese cuisine**  
**cooked fresh to order using**  
**only fresh ingredients**

**CHINESE BANQUET & HAPPY HOUR**  
**DELICIOUS DIM SUM MENU**

**Tel: (01524) 423860 or 420944**



[www.care4floors.co.uk](http://www.care4floors.co.uk)

Cleaner, Drier, Protected Carpets  
in under 30 minutes

**Call Gary on 01524 782857**  
**your local cleaning specialists**

**Council News from  
South Lakeland District &  
Cumbria County Councillor  
R.K. Bingham**

**The Smithy, Ackenthwaite,  
Milnthorpe, Cumbria, LA7 7DH**

**Tel: 015395 63694**

**e-mail: [roger.bingham@cumbriacc.gov.uk](mailto:roger.bingham@cumbriacc.gov.uk)**



## ***Roger Reports On....***

### **District & County Matters**

Our new year started with a mixed report about the well-being of South Lakeland. Most of our 102,900 population, occupying at an average of two per dwelling 51,325 households, have 'a high contentment rate'. This does not mean that we are happy about everything. In a recent county council survey of Lower Kentdale in which Burton is the biggest community 43 out of 87 replies put 'teenage activities' as a main concern followed by 43 each about 'decent housing' and 'road repairs'. Hopefully a reported better-than-average central government grant might mean improved Cumbria CC services and a council tax increase well below the 4+% it has been in some years. Unfortunately the government's grant to South Lakeland is one of the lowest and so SLDC (which is the housing authority) might have to cut its contribution to housing. Other problems included 34 people worried about public transport, 24 about traffic congestion and 21 about job prospects. Locally only 11 people put 'the level of crime' at the top of their list though there is still an above average fear of crime. This may be attributed to our having proportionately more older people -at 18.6% in South Lakeland compared to a national retired persons average of 13.6% and more single occupant households.

Recorded crime has increased in the last year by 12%. This might be explained by changes in 'recording practises (sic) and increased confidence procedures'. In particular victims of domestic violence are now more likely to report abuse after fewer incidents than formerly. There were 278 domestic violence cases in the district between March and August 2007. The relevant contact number is Cumbria Police at 08453 300 247 and ask for Public Protection at Kendal. The Crime Stoppers number for anonymous information about crime is 0800 555 111. The good news is that domestic burglaries are down from 195 in 2005 to 104 in 2007 and woundings down from 683 cases to 531. Anti-social behaviour cases are down from 4081 to 3476.

Preventative measures include *Smartwater* property marking kits being distributed to farmers to tackle quad bike and machinery thefts as part of the established *Farm Watch* project. Literally at ground level the partnership between parishes and the county council in the pilot Parish Lengthman's Scheme has been very successful. In the county survey only 11 out of 87 of Lower Kentdale replies said that our streets could be cleaner. The scheme will continue under a new title of 'community stewards'. But the parish councils will contribute more from their share of the council tax. Burton, Holme and Preston Richard parish councils formed one of three pilot groups. All reported 100% value on the performance of our lengthsman whose work includes clearing verges and flood water gulleys.

Despite flooding following downpours on 27 December and 10 January I think the Clawthorpe floods are less serious than they were before the 2006 improvements. But please let me know.

### **BARRIE ATKINSON**

TV VIDEO HI-FI

SALES AND SERVICE  
PROMPT AND RELIABLE SERVICE

PHONE 015395 60565  
OR MOBILE 07944 381986



### **Dalton Hall Business Centre Burton-in-Kendal**

<http://www.daltonhall.co.uk>

### **Offices To Let**

from 400 to 12,000 square feet  
All Enquiries 07881 930139  
[offices@daltonhall.co.uk](mailto:offices@daltonhall.co.uk)

Sewerage difficulties should also be abated when the extensions to the Moss Lane plant at Holme are completed. Though I have urged the need for bigger sewerage works to cope with the huge increase in dwellings in Burton and Holme I objected both at the site and council meetings to the height of the buildings as seen from Station Road. Some reduction in height has now been ordered along with better landscaping and tree planting.

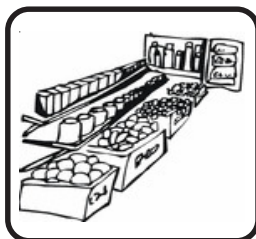
Also on Moss Lane an extended 30mph has been agreed but I am doubtful how often it will be monitored. On transport the South Area committee has objected to a plan to reduce stops at Oxenholme Station which, apart from the inconvenience, might effect the viability of the Windermere branch line. I am continuing to ask for bus tokens to be replaced with travel passes so that senior citizens who do not have convenient public transport can use them for taxis, trains or parking as well as for buses. But it all depends on money - of which I'll write more next month. If its not too late may I wish you a Happy New Year.

*Roger*

## Burton Village Store & Post Office



- ◆ Gift Vouchers  
(High Street Shops)
- ◆ Home Phone  
(Line Rental & Calls)
- ◆ Car & Home insurance
- ◆ Instant Saver



**01524 781828**

## THE CREATURE COMFORTS CAFE

at the LAKELAND WILDLIFE OASIS

*is open daily from 10.00 for drinks, snacks and a wide variety of hot and cold food including*

ALL-DAY BREAKFAST  
SANDWICHES :: PANINIS  
JACKET POTATOES :: BURGERS  
VEGETARIAN MEALS  
HOME-MADE CAKES

Phone 015395 63027  
[www.wildlifeoasis.co.uk](http://www.wildlifeoasis.co.uk)



## BURTON AND HOLME YOUTH CLUB

Do you have children aged between 11 and 15? Have you always wanted to contribute to village life? Then this is your chance!

Burton and Holme Youth Club is in desperate need of committee members. No great commitment is required... a couple of pleasant evenings in the Kings' every term and one Friday night up at the Memorial Hall.

Without YOUR support the Youth Club could close from lack of volunteers.

For further information please telephone any of the following committee members:

Michael Vicary, 781425; Liz Falkingham, 782302; or Paul Duckett, 782411.

## Mike and Zoë welcome you to The Kings Arms Burton

Fine selection of Cask Conditioned Ales  
Excellent home cooked cuisine served daily

**12noon - 2pm : 6pm - 9pm**

Monday = Steak Night (8oz Ribeye only £6.95)  
Friday = Fish Special (Cod, chips, mushy peas)

**Parties catered for**  
Phone 01524 781409

## Going Green - Feb '08

The Diary of an Eco-Worrier

### BASKET CASE

Six weeks ago the washing machine broke. To a family that processes one load of dirty washing and sometimes two almost every day of the week, this was quite an inconvenience, especially as a call to Indesit established the repairman couldn't come for a fortnight. When small mountains of washing started appearing throughout the house, I braced myself to brave the launderette. Did they still exist outside of Eastenders? I was reliably informed there's a good one opposite the chippy in Carnforth. Perfect.

I took six huge bin bags of washing. Lugging them into the launderette gave me backache, but otherwise it wasn't an unpleasant experience. I loaded up three big washers, bunged in nine quid and a bit of powder, and sloped off for coffee at a local cafe. Half an hour later it was all over and I bought chips to surprise the family with on my triumphant return home as the whiter, brighter Washing Queen of Carnforth.

The washing machine man showed up after two weeks and diagnosed the fault but didn't have the right part to repair it. After he left I assessed the overflowing washing basket and decided it was time for another chip and laundry run. But here's the thing, this time I went with less washing.

On Christmas Eve he showed up with the right part.

But it was faulty. So in the new year I was back to the launderette. But my six bags had now become two. As the weeks progressed the sheer effort of lugging loads of laundry in the winter weather from house to launderette and back again discouraged unnecessary washing and drying. The Carbonbaby was able to wear her skirt three days on the run if I prevented her from smearing jelly and ice cream into the denim fabric. I began inspecting the Carboncopies clothes to see if they could be recycled for another day. I employed Carbonlite's legendary sniff test on his clothes (much to his delight,) and put them back in the wardrobe if they passed. Everything from tea towels to sheets started to have a longer shelf life. As a result the laundry decreased by about a third and I rediscovered a life without being chained to the washing machine. I had more free time, and I didn't need Carbonlite to point out the maths; we saved money on electricity and washing powder, but more importantly the planet benefited from my reduced use of my domestic machine.

But why did it take a defunct washing machine to change my habits? I've been trying to be environmentally conscious for the last two years so why hadn't I tackled this issue before now? The simple answer is the washing machine is too convenient to resist. If loading the machine was as difficult as in my mother's day where the unreliable twin tub blocked the kitchen for the day, with its overflow pipes filling the sink and everyone sweating over the steaming piles of laundry, then I might think again about dropping clean washing into the laundry basket. On a trip to Samoa a few years ago we discovered room service laundry

### MICHAEL PLATT PLUMBING and HEATING Ltd



CORGI N°

36856

BATHROOMS SUPPLIED AND FITTED  
NEW H.E. BOILER FITTED  
RENEWABLE ENERGY PRODUCTS  
SOLAR PANEL

AIR SOURCE HEAT PUMPS

**DAY TIME 07850 472780**  
**NIGHT TIME 01524 782390**

WEB SITE [www.mplattplumbing.co.uk](http://www.mplattplumbing.co.uk)



CONSTRUCTION LTD

**DOMESTIC  
COMMERCIAL & INDUSTRIAL  
ELECTRICIANS  
& CONTRACTORS**

All aspects of electrical works  
carried out to 16<sup>th</sup> edition BS7671  
Covering Lancaster, Morecambe  
& surrounding areas

**01524 62881**

**Mobile: 07775 833 114**



meant the maids took the washing down to the river and beat it with sticks. If this was our only method of doing the laundry, I suspect we might wear our socks for one more day.

I tried to research just how ungreen our washing habit is, but the facts weren't easy to find. The best estimate I found was that about £800 million of electricity is needed to pass 500 billion litres of water through UK washing machines, tumble dryers and dishwashers every year. 90% of UK households have a washing machine and each one averages 274 cycles a year, (so I'm not alone in my daily wash) with each cycle using 50–120 litres of water (14% of household water use). But the main figure I was after was carbon emissions. Assuming the lifespan of an average washing machine is 11 years, apparently 1.6 pounds of carbon dioxide are emitted for every kWh of energy consumed. If that sounds a lot, that's because it is.

The man from Indesit eventually returned with a part that worked. He was overjoyed to sort us out; more happy than I was. The white dalek in the corner of the utilities room sprang into life, exterminating stains and nasty niffs as efficiently as ever. The Carboncopies miss the chips, I miss coffee time in Carnforth, but laundry rationing and sniff tests continue.



31 St James' Drive  
Burton-in-Kendal  
07879 681712  
01524 781173

**Brickwork • Blockwork • Stonework  
Groundworks • Drainage • Driveways  
Heavy Landscaping • Extensions  
Bespoke Stonework**



Not too hard to find this one, especially for those who catch the Bus to Kendal.

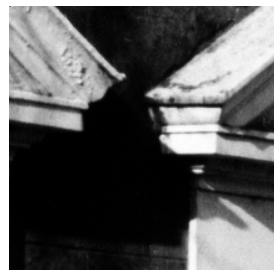
This is the view from the Bus Stop.

This one might be a bit more of a challenge.

Hint: Dick Whittington would probably have got it!

Answer and a new one in next month's BN.

Drop us a line if you find this, first one gets a mention (and maybe their picture?) in BN.



**BURTON  
TAXI**



**AIR & SEA PORTS / HOSPITAL VISITS  
SHOPPING TRIPS & PUB RUNS**

For a reliable service, please phone

**MICK BARKER**

01524 782842 / 0781 4967103

## Burton Pre-School

**Burton Memorial Hall**

**Acting Chair: Fenella Macmillan-Clare**

**Pre-School Manager: Nicola Braithwaite**



We take children from the age of 2 years including children who are entitled to the Education Grant (over 3 years)

### Opening times

	Under 3's	Over 3's
Mon	9.10-11.40am	9.10-11.40am & 11.40am-3pm
Tue	9.10-11.40am	9.10-11.40am
Wed	9.10-11.40am	9.10-11.40am
Thur	9.10-11.40am	9.10-11.40am
Fri	9.10-11.40am	9.10-11.40am & 11.40am-3pm

**For more information please phone  
07759 245984**

*Fully qualified staff. Social Services registered.  
Members of the Pre-School Learning Alliance.  
OFSTED recommended.  
Registered charity 517138*

## An Opinion...

Comments on the goings-on at the  
Parish Council

### MOSTLY ABOUT STANDARDS

An optimistic start to the New Year, with a full house of PCllrs, though members of the public, and our Community Police (if they still exist) stayed cosily at home, while the rain beat down on the roof of the BMH, and our Chairman wished us all a Happy New Year. And A.O. wishes Happy New Year too, to her readers - if any.

#### Consultations

It is the custom for the Chairman to begin with notices of outside committee meetings, for example of CALC, or conferences, or talks that PCllrs are invited to attend, or required to send delegates to. How about this one? Consultations on Orders and Regulations Relating to the Conduct of Local Authority Members - our Chairman invited members of the PC to attend - A.O. seems to remember the meeting is in Penrith, so that's an outlay on travel expenses if no other cost. Now clearly there have to be standards, but do these jolly knees-ups make them happen, wonders A.O. And do consultations achieve anything whatsoever apart from costing us all money that could be better spent on us?

It seems to A.O. that the dodgier things are at the top, the more those in charge begin to question those below, possibly in the hope of shifting the blame elsewhere. Anyway A.O. finds it hard to forgive the SLDC and other district councils for spending over £200,000 of our money on fighting for their own survival in the proposed reorganisation of the county, whilst raising

taxes and cutting services - that's even more than Carlisle spent (though not much more) on trying to become a unitary authority. Surely that's the sort of 'conduct' that should be called into question.

But don't try to ramraid our state-of-the-art SLDC building in sheer frustration - £14,000 was spent on anti-terrorist measures after 9/11 to defend our SLDC staff - and of course the building itself. *The Onion Rots from the Top*. That's a saying A.O. learned years ago. Perhaps that's better than onions rotting all over the place, which seems to be the case with A.O.'s own onions! But let's hope that these whiter-than-white council officials will benefit us all.

Alright, alright. Nothing much happened at the PC meeting, you've guessed it. Which goes some way to explain the above rant.

#### Christmas tree lights

It is generally admitted by the PC that the lights have had their day on the Christmas trees kindly provided by Deerslet, and selflessly put up by two PCllrs this year - and in previous years. Efforts are being made to replace these somewhat pathetic glimmers. The lights will, of course, be LEDs (What does D stand for? Don't ask) This limits the colours. It also limits their gaiety, but this has to be. LED lights, it seems to A.O., are like inward-turned people. They don't express jollity, they express DUTIFULNESS. But they are necessary and inevitable - just like inward-turned people, come to think of it, (though the bit about duty doesn't always apply.)

M  
I  
C  
K



L  
O  
R  
D

#### HOLME BUILDING SERVICES LTD

All aspects of building work undertaken

No job too small, so call

**Tel:- 01524 782472**

**Mobile:- 07977 093070**

1, Oxlands, Holme, Lancs, LA6 1RG

## HALE GARAGE CO



(Practical Automobile Engineers)  
*Established over 60 years*

**Main A6 Road, Hale**

**New & Used Car Sales Service & Repairs**

*Bosch KTS Computerised Diagnostics Equipment*

*Petrol & Diesel MOT Testing. Body Repairs, Tyres*

*Batteries, Exhausts & all your Motoring needs*

**Free collection or loan car service**



**015395 62173 / 62839**

### The AGM pre-cttee meeting address

Burton PC went to considerable trouble in time and expense to achieve Quality Status. This should confer more prestige, and wider powers. In fact it's reflected in little else than a small increase in the Parish clerk's wages, footed, of course by Burtonians. Our Clerk was required to study, attend courses, and to pass an exam ratified by Cheltenham Uni. So why haven't SLDC yet ratified the Quality Status? And will it make any difference if they do? This was on A.O.'s mind as the PC discussed choice of a speaker for their AGM. Why not invite Peter Ridgeway, main man at SLDC to explain why the Charter which all Parish Councils were encouraged to achieve has not yet been conferred. Surely P.R. isn't afraid of losing some of his own authority? But PCllrs at Burton are kindlier and more tactful than A.O. "We want a speech, we don't want to pillory anyone," said one of them, and the others

agreed. No mention was made of Quality Status when topics for discussion arose.

"Is nothing positive?", readers may be asking. Who is this wet blanket who tediously bends our ear every month with woeful comments? Yes, of course some things are positive. For example, no more flooding at Clawthorpe in the recent heavy rains (except for a short time, till the blockage was cleared.) And our Chairman himself cleared the blockage on Kidnapper Lane (surely a preferable name to Boon Town Lane?)

Things do get done, and by and large our PCllrs are well-meaning. So, Happy New Year, Burton Parish Council, and compliments for patiently wearing away at some of your objectives till they are eventually achieved.

A.S.



"Now repeat after me:  
These are the Nine Standards...."

**Burton Out of School Club**  
for all your Out of School Childcare needs

**Monday to Friday**  
**7.30am - 9am £3.00 per session**  
**3.15pm - 6pm £6.50 per session**

**Telephone Nicola on**  
**07771 614 505**  
for information and bookings

Affiliated to Burton Pre School  
(Registered charity no. 517138)

**Astarte Web Design**  
*Affordable, effective web design & maintenance*

**We can build & host your website**  
**for as little as £150**

**UK Domain Names from £10 for 2yrs**  
**Web Hosting from £60 pa**



*Contact Anne to find out more*

**phone: 01524 781306**  
**e-mail: awd@yobunny.co.uk**  
**www.yobunny.co.uk/astarte**





## BURTON AMATEUR DRAMATIC SOCIETY

### AFTER THE FESTIVITIES

The seasonal rush is over and it's time to return to the grim realities of everyday life, but you don't need to be bowed down if you join drama. Drama is always dramatic and we are now immersing ourselves in the technicalities of putting on a play. Our minds are fizzing with questions of lighting angles, putting our new rostra together, wardrobe colours, what properties are needed etc. etc. There are lots and lots of jobs and only the few are learning lines and adapting to "walking and talking at the same time" (sorry, in-joke!).

We are such a small band of people and we desperately need help in every area. Our stage manager needs people who can lift and carry and learn the intricacies of setting a stage. Rehearsals are highly enjoyable, we laugh a lot and enjoy our cuppa.

Our next play is a great opportunity - it's brand-new by John Peel (local) and it is exciting to work on. Rehearsals start the first Sunday in February in the Hall. Do come along at 7.30pm and lift your spirits and enjoy the company.

Alison Murphy, tel: 781007



### LADIES SHORT TENNIS

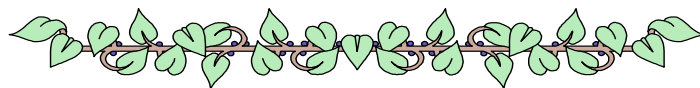
Our group is in danger of folding as we have lost several members recently through relocation, illness etc. It's a fun game, not too strenuous, and you would be made very welcome. You could even just come along for a look and have a cup of tea with us to see if it is something you would enjoy. We play Thursday afternoons at 2 pm in the main hall of Burton Memorial Hall. If you have any questions, phone me, Pat Johnson on 781277.



### LONDON MARATHON

We are two mums in the village who are going to attempt to run the London Marathon in April of this year! All the money we raise will go to Macmillan Cancer Support. If you would like to sponsor us, the sponsor form is in Bryn the Butcher's shop. We really appreciate your support and thank you in advance.

Yolanda Metcalfe and Louise Barker



### VOLUNTARY TRANSPORT SCHEME

The Burton scheme is looking to recruit more drivers to take those without a car and unable to use public transport for appointments with doctors, dentists, hospitals etc. This is a valuable service which is greatly appreciated by the clients. If you think you may be willing to join the list of potential drivers, please ring Lynne Herd (781905) for further details.

## Goad Joinery Ltd

### All aspects of joinery including:

Renovation, Doors, Windows, Sky Lights, Flooring  
Extensions, Fitted Kitchens, Fitted Bedrooms  
Barge Boards & Soffits, Garage Doors  
Loft Conversions etc

### Trusted Time-Served Joiner

*Call for a free estimate, no obligation*

**Burton in Kendal 01524 782939**

## M. LOOKER DECORATING



Interior + Exterior  
Painter + Decorator

For free estimates  
and advice

**Burton 782334  
07939 374 145**





## 1<sup>st</sup> Burton Company Boys' Brigade

The Company have entered a number of National BB Competitions, when our team for Chess (Ryan Williamson, Adam Robinson and Frederick Anson) met 1<sup>st</sup> Morecambe at Burton. They played well, but unfortunately lost 5.5 to 3.5 in the first round. We are grateful to Trevor Wood for tuition and to Tony Robinson for adjudicating the match.

Our Table Tennis team (Simon Gregory, Peter and Stephen Baxendale and James Burton) again met a team from 1<sup>st</sup> Morecambe at home, and won 9-0. We look forward to the third round when we are drawn again at home when we'll be playing the winners of the match between 1<sup>st</sup> Denton and 7<sup>th</sup> Southport. Our team are hopeful of succeeding in getting to the final in 2008 to repeat their excellent result in 2007.

National five-a-side under 14s football: Our team will be playing in the JJB Sports Centre, Manchester, against 1<sup>st</sup> Denton, 12<sup>th</sup> Liverpool, 55<sup>th</sup> Manchester, 16<sup>th</sup> Liverpool and 7<sup>th</sup> Southport in January.

National Badminton: We have received a bye to the second round, and our team will play away the winners of the match between 7<sup>th</sup> Southport and 11<sup>th</sup> Warrington.

DJMills for the BB Team

**Want to know what the BB lads get up to...???**  
**See the Burton Boys' Brigade Website**  
[http://www.geocities.com/first\\_burton/](http://www.geocities.com/first_burton/)



Fully Qualified Childcare Staff

**For Pre-School Children  
Aged 3 months To 4 Years**

**Open daily Monday to Friday 7.30am - 6pm**

Mobile Childcare Services available  
For weddings, christenings, parties etc

**SPOTTED DOG CHILDREN'S CENTRE**  
CLAWTHORPE HALL BUSINESS CENTRE  
**Tel : 01524 784321**

## LONGLANDS Inn & Restaurant

### Special February Offers

- \*2 Course Lunchtime Menu just £7.50
- \*2 Course Supper Menu only £10
- \*Free bottle of wine when 2 people each have 2 courses from our A la Carte Menu
- \*3 Nights B&B for the price of 2 during Jan & Feb
- \*Restrictions apply - please telephone for details

**The Longlands, Tewitfield, Nr Carnforth, Lancs, LA6 1JH**  
Tel: 01524 781256 Email: [info@longlandshotel.co.uk](mailto:info@longlandshotel.co.uk)



## BURTON PRE-SCHOOL NEW TO YOU SALE

Burton Pre-school are holding a "New to You Sale" at Burton Memorial Hall on Saturday 15 March between 10:00am-12:00 noon

If you wish to sell any good quality children's items (from birth to 11 years of age), please contact Helen Crayston on 01524 781788 for an individual code and guidelines for sellers. Commission rate is 15%.

## BURTON CHILDREN'S SPORTS COMMITTEE BIG KIDS' DAY OUT

Bookings are now being taken for the Big Kids' Day Out on Saturday 15 March. It will be a *Fun on the Water Day* at Pine Lake and is for children in Years 7 - 11. The cost: is £12.50 per child which includes food. There are limited places available so book now to avoid disappointment. For further details and booking please contact Christine Foster on 782694 or Julian Rowley on 784874.



## Burton Based Driving Instructor



Dual-controls, patient and friendly  
Free Theory Training  
Pass Plus and Motorway Training  
Nervous pupils welcome

**Learning for the first time  
or coming back to driving  
Call Chris on 782645**

## SLDC Recycling News



Towards the end of 2007 Defra released the national waste and recycling statistics confirming that in South Lakeland we recycled just over 30% of the domestic waste collected in 2006/07. That placed us in the top half of the league table of how much was recycled in each council area.

Most local authorities are continuing to expand the range of recycling facilities provided, and we were no exception to this during 2007. We added another 23,000 homes to the kerbside recycling service, and now provide paper, glass and can collections almost universally throughout the district. Around 12,000 of those homes also started using the green waste bins and the remainder are scheduled to start receiving those collections in April, again meaning the service will be almost universally provided.

We have also increased the number of sites with plastic and cardboard banks, and have seen the quantity of these materials we collect each month more than double since November 2006.

All of the secondary schools in South Lakeland now have recycling banks for their paper and these have also been introduced at some of the larger primary schools. We have also given away over 5,000 re-usable shopping bags to help reduce the number of plastic bags used in the district.

As a result of this there has been a big increase in the number of people that are recycling and we expect

that for 2007/08 the amount of waste that is recycled and composted will exceed 40% of the total collected. We'd like to thank everybody who has used the services that are provided and helped keep South Lakeland clean and green in 2007.

If you have any questions about recycling or waste minimisation please contact us either through the Customer Contact Centre on 0845 050 4434 or by email at [customer.services@southlakeland.gov.uk](mailto:customer.services@southlakeland.gov.uk)  
Thank you for recycling,

Andy Vickers

## MARTIN GARNER

It is with great sadness that we learned the news of the death of Martin Garner on 16 January. Martin will be remembered by many boys in Burton as the co-founder of the 1<sup>st</sup> Burton Boys Brigade over 25 years ago, and he met up with many old and current boys and officers for Burton BB's 21<sup>st</sup> Birthday celebration, during which we had the pleasure of meeting him also. Our deepest sympathy goes to Martin's family.

AN

## BURTON RECIPES

(Proceeds to BMH)

Come on Burton! Where are all these wonderful recipes? Akis and Gill have kindly agreed to have the box in the village shop to receive them. Please let us have them as soon as possible.

### THE BAY BLIND COMPANY

PLEATED ROLLER ROMAN  
VENETIAN VERTICAL  
VELUX

Each blind is measured and manufactured individually, and fitted personally  
Commercial and Domestic Evenings and Weekends  
**David or Sandra**

**Phone/Fax 01524 781149 Mobile 07957 343071**

2 Boon Town Burton Carnforth Lancs

## Paul Driver

**Building Services**



**New Builds & Conversions :: Extensions & Alterations  
Stone & Block Work :: Roofing :: Ground Work  
Paths & Driveways :: Mini Digger Hire**

**Tel: 015242 63044 Mob: 07990 862063**

## Lunesdale Decorative and Fine Arts Society

Anthea Streeter spoke to the January meeting about Charles Rennie Mackintosh.

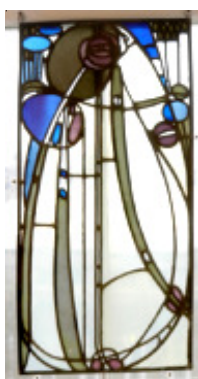
The afternoon began as a very special occasion: prizes were given to boys and girls from Queen Elizabeth School, Kirkby Lonsdale and Hornby High School. These children had won prizes for a drawing competition sponsored by LADFAS, and the drawings, which were of a very high standard, were displayed on the walls of the Hall.

After the prize presentations, Ms Streeter gave a comprehensive and extremely insightful illustrated talk on Charles Rennie Mackintosh. He lived from 1868 to 1928, and completely turned his back on the over-decorated interiors of the Victorian period. The slides showed just how innovative he was: many of his rooms could equally have been home interiors of the 1930s or even today; and many of these interiors have been refurbished or reconstructed, and can be seen in Glasgow today.

He designed many houses, galleries and tea rooms that can still be seen. Perhaps his most famous building, the Glasgow School of Art, was likened to a Michaelangelo sculpting by the designer of the new wing of the National Gallery. However, in his lifetime, he was totally unknown in London and was recognised only in Scotland and on the continent. He married Margaret Macdonald, a well-respected Scottish artist,

and often worked in collaboration with her. Their work was much influenced by the designs coming from Japan from the middle of the nineteenth century, and also by the Arts and Crafts movement. In many ways, Mackintosh looked towards Paris rather than London and was attracted to the then influential Art Nouveau movement.

Alas, he became convinced that his work was not recognised and took to the bottle, dying in poverty in France in 1928. Throughout his career he continued to paint water-colours, and these Ms Streeter showed at the end of the lecture. To me - having seen so many typical Mackintosh designs of roses and chairs – they were a complete revelation and will surely rank among the best of his time!



The next two LADFAS illustrated talks will take place in Borwick Memorial Hall as follows. On Tuesday 19 February 2008, John Clegg will talk about "Chopin and the Romantic Tradition", and on Tuesday 18 March, Jane Gardiner will talk about "The contribution of Josiah Wedgwood I to the history of world ceramics". Lectures start at 2.30 pm promptly - anyone wishing to attend as a visitor should contact me to arrange this.

LADFAS was offered the opportunity to begin a Heritage Volunteering project at Sizergh Castle at the beginning of the year. Anyone wishing to participate please contact Mel Winstanley, 015242 21277

Fanny Leech, (Telephone 015242 72009)

### HOLME GARDEN SERVICES

**Kev and Sue Longden**

Professional experienced gardeners

RHS trained

All gardening work undertaken  
including mowing, lawn care and  
specialist pruning

Garden design and planting

**Tel: 01524 782928**

**Mobile: 07748 184623**

### Reid & Mason

#### Fine Jewellery

An exciting range of handmade jewellery using  
semi-precious stones, freshwater pearls  
and sterling silver

**[www.reidandmason.co.uk](http://www.reidandmason.co.uk)**

Cressida Mason-Hornby

**01524 781 574**



## **HISTORICAL FOOTNOTE** by Roger Bingham

### **HAPPY NEW YEAR 1908 - Burton News 1908**

#### **JANUARY**

The Old Year was rung out and the New Year rung in by the Church bell ringers who 'ascended the tower at 8pm and at intervals rang until 12.30 am'. After a 'finale feu de joie' they were entertained at the Vicarage by the Rev and Mrs Carpentier. For her wedding to Mr F.D. Cresswell of Carnforth Miss Laura Moss of Buxton House, Burton, wore 'a dress of chiffon voile over silk with a wreath and veil'. After a reception for 70 guests in the Morewood School the happy couple left for a honeymoon in London prior to 'journeying to Pretoria where Mr Cresswell is connected to the Cape to Cairo Railway'. A 'Burton octogenarian', 83 year old Mrs Hayton 'succumbed to influenza'. Until three weeks before her death she had 'done her household duties and sewed without wearing glasses'.

#### **FEBRUARY**

A Rifle Cadet Corps, for boys under 16, was formed consisting of 18 boys from Burton and 32 from Holme. At the opening of a 'shooting ground at Clawthorpe' the first shots were fired by Miss Hornby and Colonel Walker-Jones. The winning cadets were G. Airey of Holme and N.G. Pennel of Burton: 'each of the best shots was very near the centre of the target'. A message from Field-Marshal Lord Roberts stated 'that the only foundation for a sound system of national defence must be the education of our boys in military drill and rifle shooting'. The 'Death March in Saul' was played at the Parish Church in memory of the Rev J. Foster, formerly a curate to the late Burton vicar the

Rev Chastel-de-Boinville, who had 'suffered a fatal accident at Harrogate'.

#### **MARCH**

At the most fashionable wedding of the year a widowed bride Mrs Mitchell of Clawthorpe Lodge wore 'a gown of crepe silk ninon de soir painted in a design of pale pink roses and pale blue cornflowers and a blue hat trimmed with a long blue ostrich feather and embroidery'. She was adorned also with a diamond and ruby pendant and matching earrings the gift of the groom Dr. J.H. Bond of London. The honeymoon was to be spent in Paris and Rome. 82 years old Mr James Ogden (who had been a grocer in Burton for 40 years) died suddenly followed 'on the day of his internment by the death of his 79 years old sister Miss Mary.' At another funeral the body of a Charles Rooke who had 'committed wilful suicide' by drowning himself in the canal at Hilderstone 'was not taken into church but a special form of service was read at the graveside by the vicar in the presence of many sorrowing relatives and friends'.

#### **APRIL**

A verdict of 'accidental death by falling down stairs' was pronounced at an inquest held at the Station Inn on Mrs Elizabeth Roberts widow of a former manager of Holme Mills. The deceased had lived with her daughter who was stated to be 'an invalid and half-imbecile'. Captain Bagot warned a Primrose League meeting at the Morewood School that unless protective

### ***Ian Donoghue*** **Quality Catch**

*Finest Fresh Fish & Seafood*

*In the Market Square every Tuesday  
from 1.45 p.m. - 2.15 p.m.*

*or if you would like me to call ring  
01253 857683 or 07816 842797*

### **Jan's Pantry**

Mobile Outside Catering for all Occasions  
Barbecues • Weddings • Christenings • Parties etc.

**A fully qualified cook at your fingertips**



**For enquiries call  
01524 781904 or  
07855 202124**

***Your Celebration Cakes  
can be done too***



tariffs replaced Free Trade 'our exports to China, Argentina etc will take second or even third place to Germany and the USA'.

## MAY

While conveying the body of Mr J Wilson of Dalton the shafts on the hearse broke and the horses bolted while coming down Vicarage Lane. All the wreaths fell off the coffin and 'only by the exertions of the male members of the cortege was the hearse prevented from overturning'. The bearers then carried the coffin in relays the remaining half mile to the church. Thomas Pannel butcher of Burton was fined 5s for 'being in charge of a horse and vehicle during the prohibited hours without having a lighted lamp'.

## JUNE

200 children went on the annual 'picnic' to Morecambe. 'Owing to their being no available tide the sail on the steamer had to be dispensed with but arrangements had been made whereby all who wished might enjoy a free (horse) tram ride along the Promenade and back to the pier'. Following the first Lambeth Conference £2:7s:6d was collected in the church for the 'Pan-Anglican thank-offering'. £3:3s:4d was also donated to the Church Pastoral Aid Society. The Burton Educational Charity awarded £30 for two years study at a Secondary School to Edward Wilkinson. Frederick Bainbridge 'headed the list' of 86 Elementary School £5pa scholarships.'

## JULY

A new Westmorland County Hospital was opened in Kendal. Old Age Pensions began at 5s per week to

poor persons over 70. The Westmorland Militia and the Cumberland and Westmorland Yeomanry were disbanded with the introduction of the Territorial Army Volunteers. The Atkinson Estate Rent Day was held at The Green Dragon Inn, Burton. The agent Mr Rheam presided at the dinner provided by the landlady Mrs Dobson. Westmorland County Council workmen sprayed 300 gallons of "'dustabaldo" to 'abate the dust nuisance caused by motor vehicles driving along Main Street'.

## AUGUST

Many local people went to London to see the Olympic Games where the local athletic hero Alec Duncan from Burneside (who had come first in the British heats) was expected to win a Gold Medal in the Marathon. Disappointingly he 'dropped out half way at Ruislip' commenting 'it was the heat which killed me'. In fact he wasn't 'killed' and lived for another 50 years. The remains of 82 year old Thomas Armer were 'interred in Burton churchyard in the presence of a large gathering of relatives and sympathising friends'. He had worked for the Dalton Hall estate for 50 years. Both the squire, Major Hornby, and Miss Hornby 'kindly' sent wreaths bearing handwritten messages "to a good man" and "to a life time old friend".

## SEPTEMBER

The Westmorland Gazette urged the need for 'New Men for Old Acres' to solve the agricultural depression. Burton farmers blamed bad weather for the poor harvest. James Dixon at Dalton Old Hall who ploughed 22 acres and 2 rods reported that because 'of the rain the grain is wasting and doing no good'. John Dobson

### Westmorland Marquee Hire

Corporate • Weddings • Private Parties

*"when it has to be right"*

Free and comprehensive site visit service

Competitive prices. Clean, smart, modern equipment

**01524 – 782 414**

[www.westmorlandmarqueehire.co.uk](http://www.westmorlandmarqueehire.co.uk)

Dalton Hall, Burton-in-Kendal, LA6 1NJ

[info@westmorlandmarqueehire.co.uk](mailto:info@westmorlandmarqueehire.co.uk)

Prices start from under £600 for a marquee complete with flooring and lighting suitable for 60 guests

Whether you're 8 or 88  
you're guaranteed a warm welcome at

## HAIR DESIGN

Open Tues - Sat from 9am

Unisex Salon, Dynamic New Team

Free Consultations, Gift Vouchers

Weddings Packages

**Appointments not always necessary**

**Duke Street, Holme 01524 782686**

of Green Dragon and Deerslet had got most of his crop in from 36 acres, 2 rods and 3 perches 'though some by the fences had to be cut by hand'. The Parish Council asked the County Council to provide kerbs and to 'asphalt' the village street footpaths but rejected a request for a light under the canal aqueduct leading to the station.

## OCTOBER

The retiring headmaster was presented with a walnut cased clock inscribed "to Mr John Chalmers with a purse of gold by his past and present scholars and friends on his retirement after 30 years as a headmaster of Burton School Oct. 10 1908." 'In returning thanks Mr Chalmers referred to the happy relations which had at all times existed between the parishioners and himself during his long period of service among them'.

## NOVEMBER

Harry Read from Burton and J. Wilson from Holme scored the highest points in the Boys Rifle Brigade's competition staged at 'the Clawthorpe Butts'. Later, at the Brigade's 'Dramatic Entertainment ... Mrs Barrow did most of the acting. The pianola (an automatic treadle piano) was capably managed by Master Vivien Barrow aged 8'. At the Burton Bachelors ball dancing to Miss Hogarth's Band began at 8.30pm and was kept up 'to the wee small hours'.

## DECEMBER

Captain Bagot complained that 'as regards politics the country was boiling over with apathy'. Over Christmas Burton folk suffered 'a chapter of accidents'. Mrs

Titterington landlady of the King's Arms tripped over a cart shaft in the Inn Yard and broke her ankle. 'James Richardson employed by Miss Burrow at Buxton House was thrown from a cart and broke his wrist. A youth, T. Metcalf returning home in the early hours fell through a 'plate glass window at the corner of Jones' yard'. On the Dalton Estate 'a workman from Carnforth cut off four toes with a wood axe'. Happily by New Year it was reported that 'all the sufferers are making satisfactory progress'.

## ELMSFIELD GARAGE

ELMSFIELD PARK  
HOLME

SERVICING - REPAIRS  
PRE-MOTS

MOWERS - STRIMMERS - HEDGETRIMMERS - CHAINSAWS  
SERVICED - REPAIRED AND SHARPENED

**RING EDDIE**

**TEL / FAX : 015395 64516**

**MOBILE : 07785 521635**

Aches and pains from everyday life or after accidents or operations, sports or exercise injuries can affect your lifestyle

**physio4u**

can help you to return to a  
full and active lifestyle

**Call Diane on 07947 727 533 for  
advice or to book an appointment**

Situated at Pure Leisure,  
Lakeland Leisure Village, and Borwick

"Quality photographs preserve your memories forever"

## Lynn Robinson ARPS Photography

Informal, Contemporary, Reportage  
Traditional Wedding Photography  
Portraits, Family Celebrations and Events

[www.lynnrobinsonphotography.co.uk](http://www.lynnrobinsonphotography.co.uk)  
[info@lynnrobinson.co.uk](mailto:info@lynnrobinson.co.uk)

3, Fern Terrace, Main Street, Burton, LE16 1LW

**01524 782279 or 07717 481647**

## Barton Tech Support For all your computer needs

- \* **upgrades**
- \* **repairs**
- \* **training**
- \* **security**
- \* **networking**
- \* **virus removal**
- \* **internet (including broadband)**

**Call Barry on 01524 781306**

**E-Mail [bts@yobunny.co.uk](mailto:bts@yobunny.co.uk)**

# Wheely Good Communities

getting more people cycling, more safely, more often

## *It's better by bike*

If you've been struggling with your New Year's Resolutions then why not make 2008 your year of the bike? Cycling is fun, free, keeps you fit and helps save the planet. Just think about it, you can keep four resolutions in just half an hour. Most people can cover five miles on a bike in little over half an hour. And that's good news if you live around here. Did you know, there are probably a dozen or more tea shops within five miles of your doorstep? There's at least one market town less than half an hour's ride from your home? Cycling 5 miles costs nothing, burns over 100 calories and saves a kilo of carbon?



So, with Spring almost in the air, what better time to get your legs spinning and get out and about by bike. We can lend you bikes, a trailer, tag-along or child seat if you want to go cycling but don't have the gear. We can show you safe routes to interesting or useful places; we've even mapped nine easy rides around the local villages, visiting local attractions, towns and tea shops en route. So why not join us in that great big

green gym outside your front door. It costs nothing and never smells of stale sweat. Well, OK it sometimes smells worse than that but that's just the country air.

Our regular 'Tuesday Trolley Dash' continues. If you've errands to do in Carnforth, why not join us any Tuesday morning for a sociable ride to town and back. Meet 9.15am Burton Square (next to Royal Hotel) or call us in advance and we can meet or pick you up along the way. All welcome on these rides, especially families.

Children must be accompanied. If you want to borrow equipment then please contact us in advance. Otherwise, while it helps us to know if you intend coming along, you are welcome to just turn up and join the ride on the day. We'll be

pleased to see you either way. Information about forthcoming rides, bike-check sessions and other news about the project is on our website at [www.wheelygoodcommunities.org](http://www.wheelygoodcommunities.org). Or if you prefer the personal touch, give us a call.

Kirstie and Stuart, Project Coordinators,  
tel: 01524 782351

or email: [wheelygood@familyonabike.org](mailto:wheelygood@familyonabike.org)

## **FLOODING ON THE MAIN STREET!**

Dramatic view of the flood on Main Street on the morning of 21 January after the deluge.

This car made waves as it passed through, the moment was caught on camera by Edward Ellis.

BBC Radio Cumbria reported the road as closed for a time on their travel news bulletins.





## *The Vicar Writes...*

### **The Copernican Revolution: Discovering our place in the universe**

Ever since Ptolemy's reflections in the 2<sup>nd</sup> century, people had believed that the earth was the centre of the universe. The sun, the stars, the planets all revolved around us. Stick a pin in the centre of the stellar map and you'd hit the earth!

Then, in 1543, Nicolaus Copernicus arrived on the scene with his drawings, maps, Polish accent and revolutionary declaration: "Look, the sun is the centre of the solar system." People didn't like the idea of the world not being centre stage. They denied the facts for over half a century. When Galileo came along and said the same thing, the authorities locked him up and the church kicked him out. Folk didn't take too kindly to demotions back then. We still don't.

What Copernicus did for the earth, God does for us human beings. He points to the Son - his Son - and says: "Look, the centre of everything!" "He is the image of the invisible God, the firstborn over all creation. For by him all things were created... All things were created by him and for him. He is before all things, and in him all things hold together." (Colossians 1:15-17)

Contrary to the Ptolemy within us, we are not the centre of everything. The world does not revolve around us. Life on this planet is not about you. It's not about me. It's about Jesus. He is at the centre of it all. We don't

like this idea, of course. We deny it and resist it. We've been demanding our own way from day one: "I want a spouse who makes me happy, colleagues who always go with my ideas, friends who always agree with my opinion, weather that suits me, traffic that helps me and a government that serves me."



We weren't made to live like this, but it's the way we've chosen. Little wonder our homes are so noisy, our work so stressful, our friendships so fragile and our society so broken. If I think it's all about me and you think it's all about you, we have no hope of harmony.

For things to improve, a Copernican revolution has to take place in our lives. We need to accept our real place in the world. We need to make God our highest priority. The God-centred life is a Christ-centred life. A Christ-centred life works and it rescues us from a life that doesn't. When we submit to Jesus' rule and authority we discover our place in the universe - it's a good place to be.

*Paul*

---

### ***From the registers:***

#### **FUNERALS**

Eleanor Herd  
21 December 2007

Robert Charles Andrew Wilson  
9 January 2008



#### **ST JAMES & HOLY TRINITY CHURCH TELEPHONE NUMBERS**

Vicar:	Paul Baxendale	781391
Wardens:	Michael Carr	781283
	Janis Wood	781241
	Trevor Wood	781241
Treasurer:	Rebecca Jackson	782590
Secretary:	George Flanders	781729
Organist:	Kath Mills	732194
Choir Leader:	Kath Mills	732194
Reader:	David Mills	732194

#### **EDWARD DUCKETT & SON**

##### **Joinery Specialists and Funeral Directors**

Greenside, Holme, Carnforth,  
Lancs. LA6 1PS

Tel. 01524 781232 (Joinery)  
01524 784211 (Funerals)

PRIVATE CHAPEL OF REST



# February Services

at St James' Burton & at  
Holy Trinity Holme

## Sunday 3 February

09.30am	Holy Communion	Burton
11.00am	Holy Communion	Holme
06.30pm	Evening Church	Burton

## Sunday 10 February

08.00am	Holy Communion (BCP)	Burton
09.30am	Family Service	Burton
11.00am	Family Service	Holme
06.30pm	Evening Church	Burton

## Sunday 17 February

09.30am	Holy Communion	Burton
11.00am	Holy Communion	Holme
06.30pm	Evening Church	Burton

## Sunday 24 February

09.30am	Memorial Hall Service	Burton
09.30am	Morning Prayer (BCP)	Burton
11.00am	Morning Prayer	Holme
06.30pm	Evening Church (HC)	Burton

### Notice:

If you would like to request prayer for yourself or for anyone else, please contact Paul on 781391

**St James' Church Online**  
<http://www.saintjamesburton.org>

**Yealand Quakers**  
**Yealand Meeting House**  
18 Yealand Road, Yealand Conyers

**Our normal Sunday Meetings for Worship  
are held from 10.30 - 11.30am**

*Visitors are always welcome*

For more information call:  
01524 781601 or 01524 782052  
or 01524 732336

## CHIROPODIST HOME VISITS

**Ian McCutcheon**  
MSSCh, Dip. Pod. Med., MBChA

**Tel. Burton 781383**

 **Telephone: 01524 782476  
01539 722594**

## MJ BUILDING CONTRACTORS (NW) LTD

**General Building, Plastering, Slating,  
Ceramic Tiling**

### Partners:

M A Wilson, 19 Morewood Drive, Burton in Kendal  
J Swindlehurst, 9 Bowland Drive, Kendal



## St. Mary's R.C. Church Yealand Conyers

### Mass Times:

Sat 6.00 pm

Sun 9.00 am

Contact: **Fr. J. Bamber**  
01524 732943  
for further information

## Warton Methodist Church

Borwick Lane, Warton

### Sunday Service: 10.30am

**Whizz Kids :: Creche**  
(school-age children) (below school-age)

Youth & Family Worker

**Bethany Scott**

Minister - **Roger Moore**: 01524 65393  
Church: 01524 732626

**Burton-in-Kendal**  
**COMMUNITY FIRST RESPONDERS**  
In association with  
**North West Ambulance Service**  
**NHS Trust**

**REPORT FOR 2007**

Burton and Holme Community First Responders provide vital Emergency Life Support on behalf of North West Ambulance Service between a 999 call being made and the arrival of the Paramedics.

All 24 members of the two teams (only 9 now in Burton) are volunteers carry pagers and can be called out rapidly by Ambulance Control at the same time as the Paramedics are dispatched. Teams are trained by the Ambulance Service in cardio-pulmonary resuscitation, defibrillation and oxygen therapy - though we are never asked to attend traffic accidents, trauma or the under 12s.

Having collected the life-saving equipment which is based in the centre of each village, two team members attend the patient, whilst others look after any relatives, record vital medical information for the paramedics and help guide the ambulance to the address. All team members wear high visibility jackets, carry Ambulance Service I.D. badges and are bound by a strict confidentiality agreement.

In 2007 Burton was assisted by Holme to a total of 23 call outs and Holme attended a total of 29 incidents - making an average of one incident every week. On

average, we arrived on each scene in just 6 minutes, 70% of the responses being well within this time. There was on average at least 11 minutes before arrival of the paramedics. The age range of the patients ranged from 27 to 97.

20% of call outs were to patients with breathing difficulties with 45% to chest pains, a possible indicator of a heart attack. Teams also attended unconscious patients and those suffering other life threatening conditions such as seizures and strokes. We are on call 24hr/day, 7 days/week, 365 days/year. We were called out Christmas Day, Boxing Day and New Year's Day! We have no rota, but if we are about in the village, then we respond to our pagers.

Whilst Holme is financially sound, Burton funds are running low as we have had no fund raising events for 2 years. Almost all of donations in 2007 have come from grateful patients. Our sincere thanks for all last year's donations. You will notice from the beginning of the report that Burton are now down to just 9 team members (although because of the contract we have with Page One we have to pay for 14 pagers - as this was the team number when the contract was taken out). On average only 4 team members are turning out and therefore the situation with the Burton Team is becoming dire.

There was an extremely well attended British Heart Foundation / Heart Start evening in the Memorial Hall in November run by Holme's Training Officer, David Taylor. Whilst a lot of interest was shown in joining the Burton team, I have heard nothing since. If anyone is

**Deerslet Nurseries**  
**Garden Plant Centre**

**Open Mon - Sat 10 - 5 & Sun 10 - 4**

New season's seeds & sundries  
range now available

(Free delivery to Burton & Holme on large items)

**Tel: 01524 781777**

**[www.deersletnurseries.co.uk](http://www.deersletnurseries.co.uk)**



**OPEN DAILY 10am - 4pm**

**Tel: 01524 782410**

still interested then please don't hesitate to contact me - also any ex-members of the Team who are still resident, please think about returning. A massive thanks to those helping to keep the team running and a plea to residents of Burton to help keep the First Responder Team secure.

Further information for Burton can be obtained from myself or for Holme - their Team Co-Ordinator is Mike Prill on 781768.

Susan Hargreaves 781273  
Team Co-Ordinator



Advertising rates for both **Swap Shop** or **For Sale** is £1 per month per 3 lines (must incl. a phone number). Copy of advert & payment should be put into a sealed envelope marked *BN Sales & Swaps* and left at the newsagents or sent to our PO Box address (see back page). Cheques payable to *Burton News* please.

## BURTON BUTCHERS & BAKERS

CHESTER HOUSE, MAIN STREET,  
BURTON. Tel : 01524 781219

BEST QUALITY LOCAL BEEF,  
PORK & LAMB

AWARD WINNING SAUSAGES &  
DRY CURED BACON

TRADITIONAL HOME MADE PIES,  
PASTIES, CAKES & QUICHES

FRESH BREAD AVAILABLE DAILY

PLEASE ORDER TO AVOID  
DISAPPOINTMENT

## KERRY HOOLIGANS RETURN

Once again our friends from Killarney, County Kerry, Ireland will be descending on us on Friday 22 February to play another concert for local charities on the evening of Saturday 23 in the Memorial Hall.

Last year due to various commitments they were unable to come over and so I'm sure after the superb night of 2 years ago tickets will go very fast as the limit is set at 150. The tickets will be the same price as then, £10 with a licensed bar. The cost of the flights has meant we will not be providing refreshments with the ticket fee but hope to provide some as optional at a charge.

Please remember any profit raised will go to local organisations, to be decided. In the past years we have managed to donate just over £4000 to various groups in and around the village, one of these being over £1000 to our First Responders 3 years ago, and £900 to 6 various small groups in the village 2 years ago.

Ten of our Irish friends will be coming over and staying in and around the Kings Arms until the Monday evening so do pop along over the weekend for some friendly banter and probably the odd un-scheduled song or two, even if you can not make the Concert.

Tickets will be on sale at the Kings Arms, Burton Butchers, the Post office shop or from Ian Hunt on 07836 782284 or Sally Lancaster on 782360 from Friday 1 Feb.



### Dr. Mark Mullineaux

**Personal Training and  
Conditioning Service**

*NSCA and  
YMCA  
Certified*



*Full Bodystat® and  
kinetic chain analysis*

**07866 144013  
mark@ptcs.info  
www.ptconline.com**

*National Register of Personal Trainers*

# What's On?

See back page for more village events & activities



## Holme & District Photographic Society

### February Meetings

- Fri 1 Egypt, Speaker: Paul Nicholson. Raffle
- Fri 15 Texture Club Competition
- Fri 22 L&CPU Documentary Prints  
Entries for Action Club Competition

All meetings at Holme Village Hall at 8pm

**Visitors welcome at all meetings**

For membership details contact  
Boots Weatherill 01524 784905



## Holme & District Local History Society

### Dialect & Accent

**Speaker: Dr M Petyt**

**Monday 18 February at 7.30pm**

Burton Memorial Hall

*Visitors welcome*



## BURTON FELLWALKING SOCIETY

### February Walks

Sun 3 Feb - 12 noon - Hincaster  
Leader: Meg Heaton, 824079

Mon 4 Feb - 7.30pm - AGM at BMH  
Contact Carol Hayton, 782007 for details

Sat 16 Feb - 9.30am - Dunnerdale  
Leader: Reg Hesketh, 781474

Thu 28 Feb - 1.00pm - Lune Valley \*  
Leader: Joyce Bye, 781784

All walks: Meet in the Memorial Hall car park to  
arrange lifts & share transport to the starting point.  
(\* less than 5 miles at a gentle pace)

Visitors £1.00 Membership £4 from Jan 1<sup>st</sup> yearly

**BMH = Burton Memorial Hall**

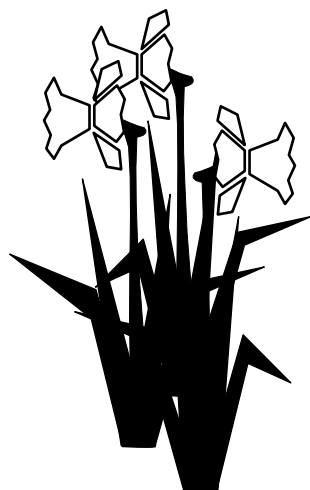
## ANNUAL DAFFODIL SHOW - EASTER SUNDAY 23 MARCH

**In aid of the Guides Brownies and Rainbows**

Entries to King Arms 10.30am to 12noon ~ 20p per entry ~ Auction Starts 1.30pm

### Classes

1. One Daffodil
2. Three Daffodils
3. 9 Daffodils
4. Easter Cake
5. Six Scones
6. Tray Bake
7. Fruit Pie
8. Flowers in a Basket
9. Pot Plant
10. Loaf of Bread
11. 6 sticks of Rhubarb
12. Chocolate Brownies on a plate



### Open Childrens Classes up to Year 6

1. Gingerbread Man
2. Decorated Hard Boiled Egg
3. Edible Bird's Nest

There are also classes for Guides, Brownies, Rainbows

Please come and support this annual  
fundraising event.





# What's On?

See back page for more village events & activities

## County Library Van Times



The library van will be in the Memorial Hall car park every Monday between 10.00 - 11.00 a.m. Why not pop along and save yourself a trip to Kendal?



## Burton Art Group

**Mondays 2:00 - 4:00 pm**

Burton Memorial Hall

For more details tel. 782749



**Burton W.I.  
meeting at  
Burton Memorial Hall**

## Around the World in 118 Days

**Speaker: Frank Walton**

**Thursday 14 February 7.30pm**

Competition: A Foreign Stamp

Hostesses: Mrs B Scott, Mrs V Pilling

Contact: Mrs A Williams, 781506

## HOLME SOCIAL CLUB

**Tel: 781936**

## VALENTINE DISCO

with DJ PHIL

Fancy Dress

Saturday 16 February

## Entertainment With TONY M

Saturday 22 March

Member's £1.00/Non-Member's £3.00

**EVERYBODY WELCOME**

*We are now open every  
Wednesday evening from 8 pm*

## Cancer Care Cafe

**Last Friday of every month**

at Slynedales, Slyne Rd, Lancaster  
(just over Beaumont Bridge)

**Open for Tea and Coffee**

**10.00 am - 12 noon**

Free Parking

**Everybody Welcome!**

Further details from 01524 381820

## Circuit Training

**Every Monday at 7.15 pm**

BMH Main Hall

**Every Friday at 6.15 pm**

BMH Reception Room

Improve your Strength & Endurance

Cardio-Vascular System

Body Composition & Flexibility

For further info call John 01524 781707



## Mobile Banking Service

**Memorial Hall Car Park**

**Fridays 10.45am-11.30am**

## Library Coffee Morning



Burton Memorial Hall

**First Monday of every Month**

**Come and Join Us!**



~ **Burton Village Online** ~

**[www.burtonweb.org.uk](http://www.burtonweb.org.uk)**

**Your Virtual Community**



## Burton-in-Kendal Art & Craft Society

Burton Memorial Hall

**"Felt Making Demonstration"**

with **Jan Hicks**

**Monday 25 February**

**7.30pm**

## Editorial...

### Nice weather... for ducks!

I suppose they would like it but the rest of us are fed up with being permanently toggled up in wellies and raincoats! Moss Farm looks like it has a moat around it that would support a fish farm alongside the sheep and cows. Is it really so much wetter than it used to be or are we just more aware of climatic things due to the global warming news that is continually pushed at us? It could be worse of course - all that wet stuff could have arrived as snow!

### Busy month!

February seems to have lots happening this year... starting with our favourite, Pancake Day, on the 5 February - so stock up on the sugar & lemons!

### Old romantics on your starting blocks...

It's the time of year again when a young (and not so young!) man's fancy turns to thoughts of love (or so the poem goes) so let that special someone in your life know you care on Valentine's Day, and don't forget, the village shop has cards and gifts for the occasion.

### A little quiz for you...

What happens every 4 years in February? Answer: we get an extra day in the month. So those who happened to be born on a 29 February can have a proper birthday instead of a day early or day late. It's also a day for the confirmed bachelor to be very wary of girlfriends who may be intent on ending their carefree lifestyle!

### Looking Skywards...

In the early hours of Wednesday 20 February we should, if the skies are clear, be able to see the first lunar eclipse of 2008. This will be a total eclipse visibleright across the Atlantic from the central USA to middle Europe, so if you can stay awake long enough, look skyward at around 1.40am to see it begin.

### Into our 16<sup>th</sup> Year...

Yes, that's how long BN has been brought to you and we would like to thank all of Burton for their terrific support. Long may it continue.

AN & BJM

## BN on Tape!



A reminder that *Burton News* can be obtained on audio tape for those with a visual impairment.

Please contact Judith Ellis on 781057 for further details.

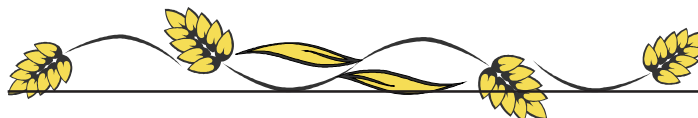
## ADVERTISE IN BURTON NEWS

**Is your group or society organising an event or activity in Burton?**  
**If so, tell us about it, and we'll advertise it for you for free!**  
**See back page for how to contact us.**

## Annual Gift Subscriptions

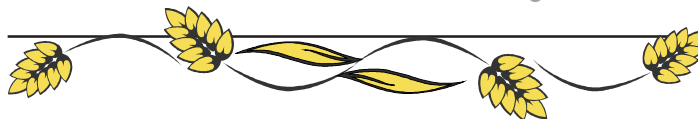
If you know of anyone who may like to receive *BN* regularly each month, why not buy them an Annual Gift Subscription?

For £10 within the UK or £20 overseas they will receive a copy of *BN* each month (11 copies per year). A great way for family, friends and former residents to keep in touch with what's happening here in Burton. Anyone interested should contact *BN* at the address on the back page.



## REMINDER...

**Please feed the birds in winter, & give them fresh water too**



## Burton Morewood School

### Mid-Day Helper required ASAP

To supervise children during lunchtime  
Between 11.45am and 1.00pm  
on Thursday and Friday  
(Term Time only)

£6.06/hr  
(Free meal available)

Apply in writing to the School Office  
Or call 01524 781627

## COMMUNITY INFO



### SLDC Recycling Information

Andy Vickers

Customer Contact Centre

on 0845 050 4434

email: [recycling@southlakeland.gov.uk](mailto:recycling@southlakeland.gov.uk)

### Community Transport South Lakeland

If you need transport to hospital, doctor, dentist, optician, etc., please contact Mrs. Lynn Herd 01524 781905. If you could spare some time as a volunteer driver you would be most welcome.

Enquiries to above or 01539 735598

### **SURGERY TIMES**

Dr JH Gorrigan

**Monday 8.30am - 10.30am @ BMH**

By appointment only. To make appointments please telephone 015395 63553

### **Child Health Clinic**

1<sup>st</sup> Wednesday of each month

10.00 -11.00 am

**No appointment necessary**

Health Visitor: Shirley Bennett 015395 64887

### **Cumbria County Council Highways Hotline**

**0845 609 6609**

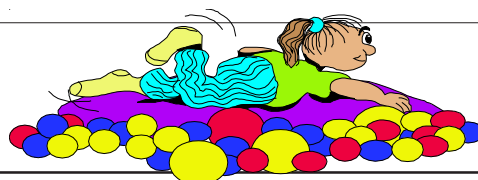
**to report road or pavement problems**

### Useful Phone Numbers

Burton News Editors	01524 781306
Burton Post Office	01524 781828
Burton Morewood School	01524 781627
Dallam School	015395 63224
QES, Kirkby Lonsdale	015242 71275
CrimeStoppers	0800 555 111
Police non-emergency	0845 33 00 247
Kendal Library	01539 732815
Kendal Hospital	01539 732288
Lancaster Hospital	01524 65944

### Council Switchboards

Cumbria County Council	01539 773000
SLDC	01539 733333



**NSPCC Child Protection**

**HELPLINE 0808 800 5000**

**KIDSCAPE 08451 205 204**

**CHILDLINE**

**FREEPHONE 0800 1111**

### **Civil Registration Services** **Births, Marriages, Deaths**

Registration of Births and Deaths is overseen by the Kendal Registrar's Office, based in County Hall, Kendal. Telephone 01539 773566 or send an e-mail to [kendal.registeroffice@cumbriacc.gov.uk](mailto:kendal.registeroffice@cumbriacc.gov.uk)

Registrations may also be undertaken at Milnthorpe and Kirkby Lonsdale Libraries by appointment only, contact the Kendal Office to arrange an appointment.

To arrange a marriage contact the Kendal Registrar.

## **BURTON-IN-KENDAL** **PARISH COUNCIL**

The **Parish Council** meets every month on the third Thursday in the month at 7.30 pm in the Burton Memorial Hall. Members of the public are always welcome to observe the proceedings. At each meeting there will be an opportunity for members of the public to voice their concerns, under agenda item **OPEN FORUM**. The Parish Council hopes that parishioners will take advantage of this. **Planning applications:** Parishioners are asked to ensure they notify the PC as well as the planning authority of any comments or objections they have about any planning application within the parish. **The Agenda of the next meeting and Minutes of the last meeting** are always available on the Parish Council notice board outside the Burton Memorial Hall or on the Parish Council website. On the website parishioners may also vote on the current **HOT TOPIC**, leave comments or suggestions on the **FEEDBACK** board, find contact details for the Clerk & Councillors, and access the archive of PC agendas, minutes & reports.

**[www.burton-in-kendal-pc.gov.uk](http://www.burton-in-kendal-pc.gov.uk)**

**FOR FURTHER INFORMATION, CONTACT**  
**THE CLERK - Charles Dale**  
**01524 781145**



# What's On?

See pages 24/25 for more Events Meetings and Activities

## ADVANCE DIARY DATES

**Valentine's Disco**, Holme Social Club - Saturday 16 February

**Kerry Hooligans**, BMH - Saturday 23 February (see pg 23)

**Dr Bike**, Yealands Village Hall (am) followed by Family Ride (pm) - Sunday 2 March

**Kent Estuary Neighbourhood Forum**, The Athenaeum, Leasgill - Wednesday 5 March, 7.30pm

**Burton Pre-School New to You Sale**, BMH - Saturday 15 March 10am -12 noon

**Big Kids' Day Out**, Pine Lake - Sat 15 March (see pg 13 to book)

**Family Ride: RSPB Round Robin** (pm) - Sunday 16 March

**Annual Daffodil Show**, Kings Arms - Easter Sunday 23 March from 10.30am onwards

**BADS Spring Play**, BMH - Friday 16 & Saturday 17 May, curtain up 7.30pm

**Children's Sports Annual Village Sports Day** - Monday 26 May

**Annual Art & Craft Exhibition**, BMH - Saturday 7 & Sunday 8 June 10am - 4pm

### CHECK OUT

the updated revised  
revamped super-duper new-look

**Burton News Website!**  
[www.burtonnews.org.uk](http://www.burtonnews.org.uk)

**BMH = Burton Memorial Hall**

### KEEP US IN THE NEWS!

If you are planning an event why not let us know asap and we'll add it to the running events list which we hope to include every month. This helps give your event more publicity and flags up potential clashes of dates for events. Let Burton News help you!

**YOU TELL US, WE TELL BURTON**



### BURTON NEWS

Please send us your letters - articles - events  
news - stories - recipes etc for publication

Drop them into The Newsagents, Main St., Burton  
or post to BN, PO Box 86, Carnforth. LA6 1WY  
or by e-mail to [editor@burtonnews.org.uk](mailto:editor@burtonnews.org.uk)

**LAST DATE FOR COPY FOR NEXT ISSUE**  
**20 February for March issue**

**Next Meeting (open to all readers)**  
**Monday 12 February at 6pm in BMH**