

INSIDE

Letters
pg 2

Outdoors
pg 4

SLDC/CCC News
pg 6

Going Green
pg 8

An Opinion
pg 10

Village People
pg 11

Historical
Footnote
pg 16

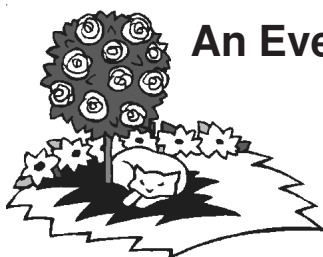
Church Updates
pg 20

Editorial
pg 26

Community Info
pg 27

What's On?
pg 24, 25 &
back page

Open Garden at Pear Tree Cottage



An Evening of Wine and Roses

Wednesday 25 June

6pm to 9pm

(See page 19 for details)

BURTON NEWS

THE VILLAGE NEWSLETTER

June 2008

Issue 171

Burton Art & Craft Society



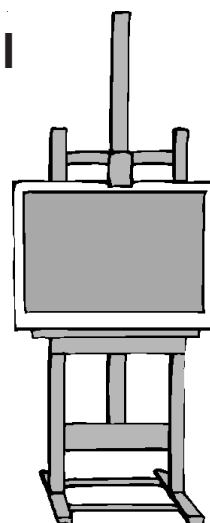
Annual Exhibition of Work

Sat 7 and Sun 8 June
10am - 4pm both days

Burton Memorial Hall

Guest artist and
opener

**Mr Dennis
Rothwell Bailey**
(professional
landscape artist)



Free admission
Refreshments available



Readers' LETTERS

Dear BN

This is a big thank you to all friends and neighbours for the get well cards and all the offers of help for Yvonne while I was in WGH having a total hip replacement. The operation was a great success and my recovery is going well.

Many thanks to all.

Roy Healey, 5 Drovers Way, Burton

Please would readers note that letters for these pages must include a valid name & address. This can be with-held from publication on request. We will not publish any anonymous letters, or material which, in the opinion of the Editorial Committee, is of an offensive or defamatory nature. BN reserves the right to edit letters & articles in the interests of magazine space.

Burton Pre-School

Burton Memorial Hall

Chair: Fenella Macmillan-Clare

Pre-School Managers: Nicola Braithwaite and Ruth Rhodes

We take children from the age of 2 years including children who are entitled to the Education Grant (over 3 years)

Opening times

	Under 3's	Over 3's
Mon	9.10-11.40am	9.10-11.40am & 11.40am-3pm
Tue	9.10-11.40am	9.10-11.40am
Wed	9.10-11.40am	9.10-11.40am
Thur	9.10-11.40am	9.10-11.40am
Fri	9.10-11.40am	9.10-11.40am & 11.40am-3pm

**For more information please phone
07759 245984**

*Fully qualified staff. Social Services registered.
Members of the Pre-School Learning Alliance.
OFSTED recommended.
Registered charity 517138*



New Baby News...



Rob and Karen Wright are delighted to announce safe arrival of Lewis George Wright, born 22 April weighing 7 lb 10½ oz. Thanks to neighbours and friends for their kind cards and gifts.

THANK YOU

Bob Mason

We would like to thank all friends and neighbours for their kindness following the death of Bob, and for the lovely tributes that were in last month's newsletter. I know we are not the only ones who miss him, he was a very active member of the village.

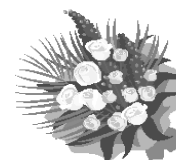
Kath & Vic Curwen



Burton Village Store & Post Office

Post Office Services

Banking (for partner banks)
Home Phone & Broadband
Motor Vehicle Licenses
Mobile Phone Top-Ups
Christmas Club
Bill Payments



Flowers By Post

Opening Hours

	Shop	P.O.
Mon - Fri	6am - 6pm	9am - 5.30pm
Sat	6am - 6pm	9am - 12.30pm
Sun	7am - 12noon	closed



01524 781828

Thanks!

A big thank you from the Burton News team to the Burton Educational Foundation and the Lancaster & Morecambe Model Engine Society for their generous donations towards our running costs, they are very much appreciated.

Also, thank you to those who have returned the annual donation appeal envelopes to us. The collection box will be in place throughout June so anyone who hasn't popped a little something in the brown envelope and put it into our collection box still has plenty of time to do so. Every penny raised for Burton News goes solely on the production costs of the newsletter, as all the work is done by volunteers who give their time freely and for that we are also extremely thankful. Without your support BN wouldn't exist, so thank you all and please do continue to support your village newsletter.

Louise Barker would like to say a massive "thank you" to everyone in Burton who has sponsored and supported her running the London Marathon. The money is just about all in and I have raised £4,124.88 for Macmillan Cancer Support.

I would also like to thank Jo and Val from the Tearooms and Mike and Zoë from the Kings Arms for the events they held to help raise money.

Finally thank you to Andy and my mum for all their support and childcare!

Boon Town Children's Playground

A few parents in the village have come together and formed a fundraising committee to raise funds for new play equipment for the village playground on Boon Town.

Now that we have had confirmation from the parish council telling us they are renewing the lease we would like to start the ball rolling with applying for funding etc.

We are asking the people of Burton to come together and help us raise the money we need by joining our committee or helping out with fundraising events. We are also asking local businesses if they would be willing to help by donating money or items which may of use to the playground.

If anybody can help, no matter how small, we would be very grateful. Please could you contact Chairperson Moira Rowley on 01524 784874 .

BURTON BUTCHERS & BAKERS

CHESTER HOUSE, MAIN STREET,
BURTON. Tel : 01524 781219

BEST QUALITY LOCAL BEEF,
PORK & LAMB

AWARD WINNING SAUSAGES &
DRY CURED BACON

TRADITIONAL HOME MADE PIES,
PASTIES, CAKES & QUICHES

FRESH BREAD AVAILABLE DAILY

PLEASE ORDER TO AVOID
DISAPPOINTMENT

Astarte Web Design

Affordable, effective web design & maintenance

**We can build & host your website
for as little as £150**

**UK Domain Names from £10 for 2yrs
Web Hosting from £60 pa**



Contact Anne to find out more

**phone: 01524 781306
e-mail: awd@yobunny.co.uk
www.yobunny.co.uk/astarte**



Outdoors

I've said it before - there could be no place better than our district for walks, easy or strenuous, upland or low-lying, canal-side or coastal, woodland or open fell. There are places as good - North Wales, say, or Wester Ross. Not better.

This came over me again as we walked with Klipper the lurcher along paths we had never found before, on the first day of heart-warming sunshine for many weary weeks. Half the pleasure of these walks is in their unexpectedness, their exploratory character, so I won't say where this one is. You'll find it presently, dear reader, or you'll know it already, as you stravaig about the wood-sheltered fields and mossy crags between here and the coast. And there will be clues enough in the paragraphs that follow.



We had meant to walk down the Bela by the path I described last month. By a weird chance the very drifts of jetsam I had found so beautiful were being gathered into heaps by a man from the Environment Agency and burnt. Why? Are withered rushes and old tree-

trunks such a nuisance that they can't be left to decay in their own time? Since we didn't want to walk through clouds of smoke along a shoreline scraped bare by a digger, we got back into the car and drove over the hill to Storth, looking for a Public Footpath sign. Copse after copse, pasture after pasture, was notice-boarded 'Private Land. No Access'. At last we spied a parking place beside an inviting gate into a woodland track. It was the entry to a small paradise.

The way was dry and solid, and not much used - clumps of primrose shone out in the central grass. Amongst the wet-floored wood to our right, next to a beck with two rushing waterfalls, fresh green blades of flag iris were standing a foot high. On the left a limestone crag snaked along, made of such squared and jointed blocks that it looked almost Roman. Against the sky a tower twenty feet high reared up from a man-made mound at least as high again: 'Coldwell Limeworks', a notice told us. It was a flare kiln, restored in

2006 and 2007. Excellent drawings and captions told us all we needed to know about how it had worked. In the days when it was at the heart of countryside production it had made mortar and slaked-lime fertiliser. The tall stack has now been grouted for safety. What

"Quality photographs preserve your memories forever"

Lynn Robinson ARPS Photography

Informal, Contemporary, Reportage
Traditional Wedding Photography
Portraits, Family Celebrations and Events

www.lynnrobinsonphotography.co.uk
info@lynnrobinson.co.uk

3, Fern Terrace, Main Street, Burton, LE16 1LW

01524 782279 or 07717 481647



31 St James' Drive
Burton-in-Kendal
07879 681712
01524 781173

**Brickwork • Blockwork • Stonework
Groundworks • Drainage • Driveways
Heavy Landscaping • Extensions
Bespoke Stonework**

a monument, as interesting as any castle, built of stone and brick with concrete inserts, pierced by rusted iron vents whose function we could only guess at.

After that the terrain was all old pastoral - fields well trampled by cows, the track indented by horses' hooves, fences wired, not barbed. On our left the blocky scar made the boundary between upland and sea-level marsh, which was golden with winter rushes, like a mini Leighton Moss. Ledge after ledge of the limestone was jewelled with clumps of primrose, yellow beds of



Photos by Edward Ellis - see also page 17

it, little avalanches of flowers spilling down runnels of humus between crags. A wild garden of primrose, violet, and celandine, hawthorn, yew, hazel, elder, and ash.

Seaward, a familiar tower now stood dark against the sky in the gap between Silverdale and Arnside. The forested bulk of the Knott with its gaunt shilla slopes rose up to the north. A heron flew over, briefly visible in the clear air above the track. Woodpeckers rat-tat-tatted invisibly nearby. Pheasants made their noise like early motor-car bulb horns. A grey squirrel scampered ahead of us - it was hard work leashing Klipper back from chasing it into the lacerating brambles and thorns. This whole 'secret' world has been available to us, three miles away, for thirty years. No doubt there are a dozen more lurking about, waiting to be discovered.

David Craig



BURTON AND HOLME YOUTH CLUB

ANNUAL GENERAL MEETING

The meeting postponed from May will now take place on Thursday 12 June in the club room in Burton Memorial Hall at 7pm. All welcome.

New committee members are vital to ensure the survival of YOUR successful youth club. We would particularly welcome parents of next year's Years 7 and 8. Your help is needed. Any enquiries please ring Michael Vicary on 781425.

Whether you're 8 or 88
you're guaranteed a warm welcome at

HAIR DESIGN

Open Tues - Sat from 9am

Unisex Salon, Dynamic New Team
Free Consultations, Gift Vouchers
Weddings Packages

Appointments not always necessary

Duke Street, Holme 01524 782686

MO WITHAM

*Painting
Decorating*

**Any Size of Job
Completed To YOUR
Satisfaction**

**PHONE: BURTON IN KENDAL
01524 781447**

Council News from
South Lakeland District &
Cumbria County Councillor
R.K. Bingham

The Smithy, Ackenthaite,
Milnthorpe, Cumbria, LA7 7DH

Tel: 015395 63694

e-mail: roger.bingham@cumbriacc.gov.uk



Roger Reports On...

The 2008 Election & Other Matters

Firstly THANKYOU for electing me and my 'running mate' Brian Cooper as your South Lakeland District Councillors on 1 May. The results were: Bingham - Conservative 1132, Chandler - Liberal Democrat 542, Cooper - Conservative 916, Johnston - Liberal Democrat 592. Also congratulations as Burton Parish had, I think, the highest turnout in the District (and perhaps the country?) at over 60%.



On the Council the Liberal Democrats increased their overall majority and will form the administration which will mean that councillors (like me) from other parties will not be eligible for a Cabinet place or a Committee Chairmanship. The Conservatives had a net loss of one seat being down from 15 in March to 14 though the party's share of the vote, reflecting national trends, increased. The biggest change was the complete elimination of independents. When I was first elected in 1984 there were no official party groups although most members stood on a party label and there were 17 independents. For many years also we had 10 or 11 Labour Councillors; now there is just one who represents an Ulverston Ward. More

importantly there are twenty new councillors out of a total of 51. As the second-longest-serving councillor I hope to be allowed to help the newcomers to settle in and to continue the tradition of cross-party friendship.

As always the Election campaign was stressful but enjoyable. The 'stress' part was the need to print and distribute so many leaflets. We put out 10 in three months and believe we managed to get to some 1500 houses in an area which stretches from the border of New Hutton above Kendal to the Lancashire boundary at Irving's wood yard at Hutton Roof. Also we put up (and took down within 24 hours) 180 posters. The strange thing is that this is only a local trend. I did not see one poster in the Ulverston area or in Carlisle, while in the second week of the Crewe and Nantwich by-election I only saw six signs - only a third of the number we had at Junction 36. Unlike 2007's election heatwave the weather was cold and I wore a scarf and my dreadful hat all the time.

As usual I enjoyed seeing the countryside emerge from the winter - in what must be the longest daffodil time ever. Some were out in January while the pheasant's eye narcissi are still in bloom. I also saw a natural phenomenon I'd never seen before which was two hares having a boxing match during a hail storm when I was delivering up Shenstone Lane, Preston Patrick.

Above all this campaign was the friendliest 'going round' I've ever enjoyed. Only two people were impolite and I had only one dog bite (at Lupton Hall Farm). Incidentally we noticed that our dog population has increased -

Barton Tech Support **For all your computer needs**

- * upgrades
- * training
- * networking
- * internet (including broadband)
- * repairs
- * security
- * virus removal

Call Barry on 01524 781306

E-Mail bts@yobunny.co.uk

**M
I
C
K**



**L
O
R
D**

HOLME BUILDING SERVICES LTD

All aspects of building work undertaken

No job too small, so call

Tel:- 01524 782472

Mobile:- 07977 093070

1, Oxlands, Holme, Lancs, LA6 1RG

though happily complaints about people not cleaning up after them have decreased.

Not surprisingly the biggest complaints concerned the roads. I am demanding action about contamination on the A6070, pot holes on Dalton Lane, the planned repairs to Station Lane and Tan Pits Lane and the delays in 'adopting' the road on Church Bank Gardens.

One of the main SLDC issues is likely to be debates over the South Lakeland Development Framework. Proposals for 'further development' in Burton include 'to the north of the village ...new housing could be added in this area within the adjacent pastoral fields, with some improvement to the edge of the village.' To the south (Dalton Lane area) development is unlikely. To the west there appears to be little 'scope for development... as the M6 detracts from views and the quality of character.' To the east (Morewood Drive area) 'views are enclosed by the ridge and therefore there is potential for the development on the edge of existing housing areas'.

Further information can be obtained from the Development Plans Manager, SLDC, South Lakeland House, Lowther St., Kendal, LA9 4DL. Tel. 01539 717490.

So far these are only 'proposals' and the whole planning process will have to be gone through up to public enquiries and a decision from a Minister before 'developments' take place. But let us be prepared.

Continuing regards,

Roger

Aches and pains from everyday life or after accidents or operations, sports or exercise injuries can affect your lifestyle

physio+u

can help you to return to a full and active lifestyle

Call Diane on 07947 727 533 for advice or to book an appointment

Situated at Pure Leisure, Lakeland Leisure Village, and Borwick

CLOSEUP



Did anyone keep their 'eyes down' to spot this date stone on the wall outside Hordley House?

This caused a bit of head scratching when it appeared wondering what it was!

So - what is it???



Answer and a new one in next month's BN (space permitting)

Drop us a line if you find this, first one gets a mention (and maybe their picture?) in BN.



Burton Based

Driving Instructor

Dual-controls, patient and friendly
Free Theory Training
Pass Plus and Motorway Training
Nervous pupils welcome

Learning for the first time
or coming back to driving

Call Chris on 782645



Telephone: 01524 782476
01539 722594

DAYLUM LTD

**General Building, Plastering, Slating,
Ceramic Tiling**

Partners:

M A Wilson, 19 Morewood Drive, Burton in Kendal
J Swindlehurst, 9 Bowland Drive, Kendal



Going Green - June '08

The Diary of an Eco-Worrier

A "package holiday"

"We ought to take a package holiday sometime," says Carbonlite as we cycle down to the farmers' market in Milnthorpe. The hedgerows are flush with wild garlic and the breeze pushes pink blossom under our wheels as our feet spin in the sunshine. On this glorious day I don't feel the need for a holiday and I'm curious Carbonlite should put forward the suggestion. "A package deal? You mean a fortnight in a Spanish hotel with all our drinks included?" I ask. "No," he replies. "Not that type of package holiday. More of a 'packaging' holiday really. No cardboard, plastic or glass coming into or out of the house. For a week."



Once I've got over the disappointment of no free booze, I begin to mull over his idea. A week's "package holiday" would cut down the endless trips to the tip to recycle plastic and cardboard, which I always end up having to do. And it might force me to shop more healthily and locally. But why wait for the peak of summer to liberate myself from the burden of cereal boxes and tetrapacks? Why not start straight away? And where better to start than a farmers' market? I don't mention anything to Carbonlite, my transformation into package holidaymaker will be a surprise for him at dinnertime.

My first purchase is easy. A loaf of wholewheat bread. I'm slightly concerned it's been driven in from Liverpool

that morning, but reckon the package-lessness of the product will cancel out the road miles. Joyfully, I ask the scouser bread man to drop it straight into my pannier next to the tool kit and the bicycle lock.

I then pop over to the olive stall and drool over green and black delicacies in their big curved yellow bowls. Simple and delicious. But where to put them? Olive man can't just tip them into my pannier like bread man did. After cursing myself for not bringing a range of Tupperware tubs on my cycle ride, I decide to give olives a miss. But now olive man is all fired up to make a sale. He starts pushing an assortment of olives my way on cocktail sticks. And when he gets no interest he moves onto the pickled garlic. To stop him charging at me with any more sharp sticks I grab one of the large plastic containers stacked up next to the bowls and fill it up. "Climate death by olives and feta cheese," I mutter to myself, "and the first failure on the Carbon family package holiday front."

As a penance I move on to the vegetable counter and ask the assistant to tip the carrots and onions straight into my bag. Then I stroll to the opposite stall. I need a new quilt cover as ours is beyond repair. But all the quilts are wrapped in cardboard and plastic. As a compromise I unwrap the quilt, pay for it, then hand over the packaging to the sympathetic saleswoman. "So good to see a young person caring for the environment," she trills as I shove the quilt deep into the pannier around the vegetables and olives.

Finally it's over to fish man. Now this stall is good. Freshly caught fish and seafood, all laid out on ice

PLANS DRAWN

McMINN CONSULTANCY SERVICE(N.W.)Ltd
STUART McMINN BSc HND ABEng

**PLANNING/BUILDING REGULATION APPROVALS
FOR NEW HOUSES, COMMERCIAL PROPERTIES
EXTENSIONS, ALTERATIONS & REFURBISHMENT**

**Architectural & Building Surveying Services
Planning Supervisors. Land Surveying
Farm & Barn Regeneration**

Tel 01524 781081 Mobile 07729 845147

Mike and Zoë welcome you to The Kings Arms Burton

Fine selection of Cask Conditioned Ales

Home cooked cuisine 12 noon - 2 pm : 6 pm - 9 pm

Lunchtime Offer: Homemade soup of the day and sandwich of your choice £3.95. Any two courses £7.95

Teatime Teasers: 5pm-7pm. Two courses for £7.95 (starter and main course or main course and dessert). Childrens menu (includes ice-cream) £4.95

Monday Steak Night: £7.95

Phone 01524 781409

**Parties
catered for**

filled platters. No polystyrene, no cardboard. Just a thin plastic bag that I can recycle, if I can get the smell of smoked haddock out of it. I slap it into the pannier, heave it closed and return to the bike.

"Have I got a treat for you," I tell Carbonlite. I reach for the black pannier. Inside is a warm fish with a split bag and a brand new bleach white quilt now tie dyed with fish juice. As I pull it out of the bag to assess the damage, a Greek salad of olives, pickled garlic and feta tumble onto the kitchen floor. Meanwhile the bread is a funny shape and has a distinct whiff of onions. "You'll notice I've started our package holiday already," I say. "But I'm not very good at it yet. I think I'll need a bit of practice." "Take an extra suitcase next time perhaps?" Carbonlite suggests with a grin. "Perhaps two. One for the fish and another for the duty free," I reply, grinning back and plonking a bottle of wine from the local Spar down onto the table. Planning my next market trip in finer detail, I pour a glass of Chardonnay and pick flakes of smoked haddock from the buttonholes of the new addition to the bedroom.

VACANCY FOR PARISH COUNCILLOR

A vacancy has arisen on the Parish Council. A nomination will be co-opted.

This is your chance to be actively involved in your community and to represent the community. It is a challenging and rewarding position and the Parish Council invite anyone over the age of 18 and living within the parish to apply in writing to the Clerk before the next Parish Council meeting that takes place on Thursday 19 June 2008.

If you are interested but not sure what is involved please contact the Clerk or any parish councillor for an informal chat.

Charles Dale, Parish Clerk
Russell Cottage, Dalton
Burton-in-Kendal, LA6 1NN
Tel: 01524 781145



Dalton Hall Business Centre Burton-in-Kendal

Meeting Room Hire

All Enquiries 07881 930139

offices@daltonhall.co.uk

<http://www.daltonhall.co.uk>

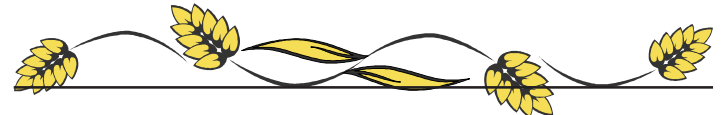
THE CREATURE COMFORTS CAFE

at the LAKELAND WILDLIFE OASIS

is open daily from 10.00 for drinks, snacks and a wide variety of hot and cold food including

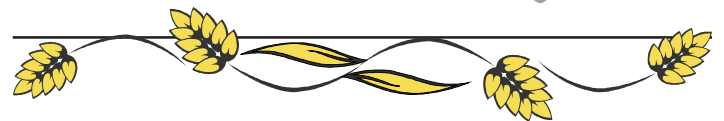
ALL-DAY BREAKFAST
SANDWICHES :: PANINIS
JACKET POTATOES :: BURGERS
VEGETARIAN MEALS
HOME-MADE CAKES

Phone 015395 63027
www.wildlifeoasis.co.uk

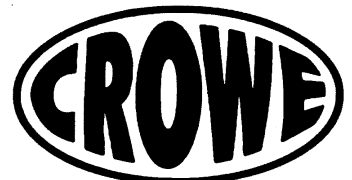


REMINDER...

Please make sure the birds
have fresh water now the
weather is warmer



- General Building Works
- Property Maintenance
- All Roofing Work
- Plastering & Dashing
- Tiling
- Dampcoursing
- Joinery Works
- Plumbing & Electrics
- Grant & Insurance Works



CONSTRUCTION LIMITED

MATTHEW CROWE
1 WHITERAY ROAD
LANCASTER LA12QT
TEL: 01524 62881
MOB: 07775 833 114

An Opinion...

Comments on the goings-on at the Parish Council

NO OPINION!

An Opinion didn't turn up for the AGM. Or for the following deliberations of the Parish Council. She offers her apologies to anyone patient enough to plough through her usual reports and comments - monthly since Dec. 2001, with some kind stand-ins by Tony Toubkin and our editor. So it's not possible to make any comments this month. But informants were kind enough and forgiving enough to fill her in on a few details, so here they are:-

Election of Parish Council Officers

At the AGM the following were elected:

Chairman - Francis Mason-Hornby

Vice Chairman - Richard Boddy

Representatives:

Boon Town Playing Field - Alan Wren

Burton Educational Foundation - Kath Unsworth

Burton Recreational Trust - Richard Boddy

CALC, and Lengthsman Admin. - Paul Rogers

Xmas trees and lights - Richard Lawson

Memorial Hall Cttee - John Brown

Plain Quarry - Jane Hopwood

Quarry Liaison - Jane Hopwood and Alan Wren

School Governors (if nominated) George Isherwood.

After the AGM

Other details gleaned by your errant reporter were:

1. A suggestion was made by a PCllr that local businesses should be asked to contribute towards financing the lengthsman.

2a. Three members of the public were present to inform the PC they intended to try to set up a cttee to raise funds etc for improving the equipment on the remains of the Boon Town playing field (assessed by a PCllr as approx. one-third of its original size). The three asked for PC support (notice appears elsewhere in this issue).

2b. NPS (Norfolk Property Services) on behalf of SLDC wrote to the PC to say that the Boon Town playground could be leased on a 6-monthly basis at a cost of £75 p.a. (it was formerly £50 for the entire area!). The PC are to agree to this.

Well, No Opinion was assured by the three informants she contacted that it was a short meeting, so hopefully this account covers most of the topics raised. But the minutes will duly appear on the PC notice-board, and Paul Rogers is editing the PC Newsletter for the time being, so anything No Opinion has omitted will no doubt be covered.

* Thanks to the forbearance of those helping to compile the above, though No Opinion has to take the blame for any omissions etc.

A.S.



LONGLANDS

Inn & Restaurant

Two course lunchtime menu - £7.50

Two course supper menu - £10.00

Monday - Friday 5.30pm - 7.00pm

The Longlands, Tewitfield, Nr Carnforth, Lancs, LA6 1JH
Tel: 01524 781256 Email: info@longlandshotel.co.uk

Burton News Website!
www.burtonnews.org.uk

Village People

... an occasional series

Jeff Pritchard

Jeff from Burton-in-Kendal is a motor mechanic who works with his dad Stuart at their family run garage S J & B Pritchard Auto Repairs at Gatebeck. Jeff is also a well-respected driver in the "Short Oval Track" motor racing world.

It all originated from his interest in model car racing, followed by Go-Cart racing and then, aged 15 years old, he progressed in Junior MINISTOX at Warton and onto Senior MINISTOX at Millom.

Whilst watching a meeting at Birmingham Wheels he decided to make a move into Stockrods. His first car in this class was a Toyota Starlet which was followed by a Vauxhall Nova and Corsa over the next few years. At the end of the 2005 season he bought the Vic Blackford car which he put through a complete rebuild.

The 2006 season saw a new challenge with a move into the "Oval Track Legends". The races take place on a 1/4 mile track with banked corners. All the cars taking part are imported from the USA. There are seven body shapes but the chassis and suspension are all identical. They are based on a 5/8 scale 1937 Chevy sedan with a 1300 cc Yamaha motor bike engine. The cars are described as "Pocket Rockets" with an acceleration of

0-60 mph in 2.9 seconds and can reach a speed of 140 mph.

Jeff with his crew Stuart (Dad) and Paul Woodburn tour the tracks throughout the country where there is a meeting every two weeks. The nearest track is in Stafford, other tracks include Northampton, Ipswich, Essex and Aldershot, to name a few.

Last season Jeff had 3 wins including 7th position in the European Championships in only his second season. He hopes to improve on his performance this September in Belgium. Good luck Jeff!

Jeff's progress can be followed by visiting his website <http://pritchardmotorsport.tripod.com>

FW



THE BAY BLIND COMPANY

PLEATED ROLLER ROMAN
VENETIAN VERTICAL
VELUX

Each blind is measured and manufactured
individually, and fitted personally
Commercial and Domestic Evenings and Weekends
David or Sandra

Phone/Fax 01524 781149 Mobile 07957 343071
2 Boon Town Burton Carnforth Lancs

Jan's Pantry

Mobile Outside Catering for all Occasions
Barbecues • Weddings • Christenings • Parties etc.

A fully qualified cook at your fingertips



For enquiries call
01524 781904 or
07855 202124

*Your Celebration Cakes
can be done too*

THANK YOU!

Thank you to all the people who sent photos of Burton vicars for the Local History Society archives - we now have copies of the Rev. Aubrey Cunliffe Sutcliffe 1936 - , the Rev. Joseph Benedict Phillips 1953 - , and the Rev Donald Herman 1959 - (not the date in the April 2008 BN.)

The only photo still missing is the Rev. Robert William Britton 1919 -, has anyone a copy they can lend us?



Above: 1985 Rose Queen - 27 May 1985

The memories of the widow of the Rev J.B. Phillips will be in BN when space allows.

L-R: Jennifer Carr, Lyn Giffellon, Nicola Freeman, Janet Kirkman, Kate Williamson

With reference to the *Historical Footnote* by Roger Bingham in April 2008 BN, "In June fifty years ago... the beautifully embroidered Rose Queen Banner was new (i.e. in 1958.) The banner was found under the stage in the Memorial Hall and re-used in 1985 and perhaps later years by the Rose Queen on her float. Where is it now? Does anyone know? Any photos of past Rose Queens would be a welcome addition to the archives.

Kath Hayhurst, 781613



Keep Burton Tidy!

Don't drop it, bin it!

Goad Joinery Ltd

All aspects of joinery including:

Renovation, Doors, Windows, Sky Lights, Flooring
Extensions, Fitted Kitchens, Fitted Bedrooms
Barge Boards & Soffits, Garage Doors
Loft Conversions etc

Trusted Time-Served Joiner

Call for a free estimate, no obligation

Burton in Kendal 01524 782939

The Honey Tree Chinese Restaurant 293 Marine Road Central, Morecambe

Open 7 days a week for lunch
and evening meals

Modern authentic Chinese cuisine
cooked fresh to order using
only fresh ingredients

CHINESE BANQUET & HAPPY HOUR
DELICIOUS DIM SUM MENU

Tel: (01524) 423860 or 420944

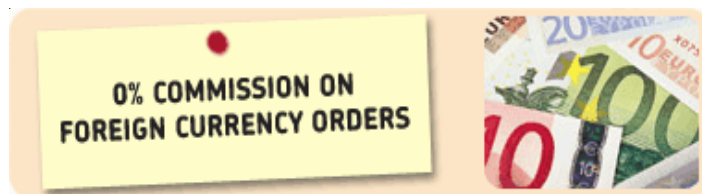


New Facilities at the Post Office

On-Demand Euros, Dollars and Travellers Cheques at Burton Post Office

After the good news that Post Office Ltd plans to keep the Burton Office, we were very pleased to be informed that the branch has been chosen to offer "on demand" US Dollars and also Travellers Cheques. From the end of June, you will be able to call in and collect Euros and Dollars immediately.

We are certain that this decision reflects our success with sales of Euros. Thank you once again for your support.



Burton News Annual Donations Appeal

Please help keep your
BN going !

Spare donation envelopes are available at the Village Store if you've mislaid yours.



COLIN HARPER BUILDING SERVICES

- | | |
|---------------|--------------|
| * alterations | * extensions |
| * plastering | * roofing |
| * patios | * stonework |
| * drainage | * tiling |

Quality work at competitive prices
Free estimates

Tel: 01524 781194

Mobile: 07880 925170

39 Trinity Drive, Holme, Carnforth, LA6 1QL

Visit to Capernwray Hall

Monday 19 May saw us joining a large group of fellow members of the local history society for a visit to Capernwray Hall. Owned since 1946 by a Christian group called the Torchbearers, we were made very welcome. Starting in the beautiful library with a presentation about the history of the estate from its earliest times, we were then given a tour of the main rooms and the outside of the Hall.

Some adventurous souls braved an 88-step spiral staircase to the top of the faux pele tower, from where the views are said to be magnificent. Those of older years, creakier knees or vertigo sufferers kept their feet on *terra firma* and instead explored the stonework, decorative plaster, and heraldry in the Hall.

We were not able to visit the parts occupied by students of course (27 original bedrooms plus former servants' quarters) but were permitted to climb the beautifully carved wooden staircase to the first landing to take a closer look at a wonderful stained glass window. Our guide didn't know who had made it, but some discussion between a few members suggested it could be by Shrigley and Hunt of Lancaster (can anyone confirm this for us?)

Our tour ended back in the library where we were served refreshments by some of the students, who also told us why they had chosen to come to study at Capernwray. The last to leave, we finally tore ourselves away at almost 10pm! Thanks to Capernwray Hall staff and the LHS for such a great visit.

AN

ELMSFIELD GARAGE

ELMSFIELD PARK
HOLME

SERVICING - REPAIRS
PRE-MOTS

MOWERS - STRIMMERS - HEDGETRIMMERS - CHAINSAWS
SERVICED - REPAIRED AND SHARPENED

RING EDDIE

TEL / FAX : 015395 64516

MOBILE : 07785 521635

RICS North West Awards 2008

Success for local entry!

This year's RICS North West Awards have caused great jubilation in Dalton. The conversion of derelict and redundant farm buildings at the former Home Farm into a new Business Centre has proved a successful venture for the Dalton Hall Estate, both in creating space for businesses who employ over 50 people, and in being the winning entry in this year's RICS North West Awards.

The development was entered in, shortlisted and won the category "Building Conservation" against competition from such projects as Smokehouse Yard in Kendal, and Tatton Park walled garden in Cheshire.

Francis Mason-Hornby and his team are understandably delighted at the success of the project. He told BN that the awards dinner was held in Liverpool - Capital of Culture 2008 in the new Arena and Convention Centre (AAC Liverpool) and awards were presented by veteran newscaster, Liverpool-born Peter Sissons.

The RICS North West Awards (Royal Institute of Chartered Surveyors) are in their fourth year and continue to go from strength to strength with over 100 entries submitted into this year's awards so winning was no mean feat!



With quality, value for money & sustainability as watchwords, the awards are all about diversity & recognising projects that have made a positive contribution to their environment.

CHIROPODIST

HOME VISITS

Ian McCutcheon
MSSCh, Dip. Pod. Med., MBChA

Tel. Burton 781383

J.C. DERBYSHIRE

**BUILDING AND LANDSCAPING
TRADITIONAL STONEMWORK
SPECIALIST**

**15 ST JAMES DRIVE
BURTON-IN-KENDAL**

**TEL: 01524 784840
MOB: 07967 092465**

Lunesdale Decorative and Fine Arts Society

Hill Towns of Italy

This lecture, given by Edward Saunders was a delight, given by someone appreciative of both the beauty and cultural magnificence of the region. It was pointed out that many of these hill towns from Romagna, Tuscany and Umbria, showed multi layers of ancient architecture. Many buildings include elements from Etruscan, Roman, the Middle Ages and Renaissance architecture, and sometimes all can be seen in a single building, for example the Arch of Augustus in Perugia. Not only are these towns architectural gems, but they possess some of the finest paintings in the world. Much of the building and artistic innovation stopped with the coming of the Black Death in 1348, and many of these towns never recovered but remained in a sort of cultural time warp.



Public domain photo by Attilio Stefano Funel

The town of Assisi – the rival city to Perugia - has paintings by Giotto as well as masters from Siena. The major buildings were completed by 1220 and Giotto, who started his murals in 1240, was able to draw on the anecdotal evidence of those who could actually remember Saint Francis. The paintings are masterpieces of realism.

In Siena we have the wonderful mural of “Good Governance” in the town hall which shows in graphic detail pictures of the city and its inhabitants as they were in the 1300s. Many of the buildings in the mural

exist and are recognisable today! The cathedral, noted for its magnificence, was finished in 1300 and has a wonderful inlaid stone floor dedicated to Pope Pius II, the Sienese pope. Urbino, under the guidance of its Duke, fostered the paintings of Raphael and Pierra della Francesca, while Gubbio was a centre for ceramics and the production maiolica.

Never has a single region in any country supported so many small towns of such architectural significance or had such artistic influence in Europe. These towns still have a sense of their own cultural identity and can be seen in relative comfort, unlike the major towns of Italy such as Florence and Rome, with their millions of tourists.

On Tuesday 17 June, there will be the LDFAS Annual General Meeting and social event, followed by the talk given by Sam Riches, “Dragonslayer, Martyr and Our Lady’s Knight: The Iconography of St George.” Because of the AGM, proceedings start promptly at 2.00pm.

LDFAS is continuing the Heritage Volunteering project at Sizergh Castle begun last year. Anyone wishing to participate please contact Mel Winstanley, 015242 21277

Visitors welcome at all meetings, please contact Fanny Leech on 015242 72009 for more details.



HALE GARAGE CO



(Practical Automobile Engineers)
Established over 60 years

Main A6 Road, Hale

New & Used Car Sales Service & Repairs

Bosch KTS Computerised Diagnostics Equipment

Petrol & Diesel MOT Testing. Body Repairs, Tyres

Batteries, Exhausts & all your Motoring needs

Free collection or loan car service



015395 62173 / 62839

HOLME GARDEN SERVICES

Kev and Sue Longden

Professional experienced gardeners

RHS trained

All gardening work undertaken
including mowing, lawn care and
specialist pruning

Garden design and planting

Tel: 01524 782928

Mobile: 07748 184623

SUMMER TERM SUCCESSES - AT MOREWOOD SCHOOL 1924

Attendance, curricular changes and inspection, the main traumas of modern education, were far less onerous at Burton's Morewood School in the early 1920's. In 1924 Mr Smart, the Headmaster, regularly reported 100% attendance - though it dropped to 52% during an influenza epidemic in February. Despite snow 'falling for two days and still drifting' 73% of children made their way to school on 10 January while on 5 March after 'snow all night' only eight children 'all from a distance' stayed away. In April the school roll was briefly boosted by five children from a travelling circus who came on Thursday and left on Friday. Happily, in the Summer term the school was awarded two extra days holiday 'for attendance' and also to celebrate the success in the 11+ County Scholarship exam of John Dobson and Annie Howarth who had passed, respectively, to go on to Heversham Grammar School and Kendal High School. With most mothers at home all day there were no child minding problems for extra holidays and odd days off for Shrove Tuesday, Ascension Day and the annual July trip to Morecambe. Moreover many mothers attended the medical inspections and a visit from the school dentist. He recommended 26 pupils - half the school - for treatment though only 19 received it. The only change in the curriculum was Domestic Science for older girls who, because of a new bus service, could go once a week for three hours instruction at Holme.



The Carlisle Diocesan Inspectors Report of July 8, 1924, was inscribed by Mr Smart (in beautiful copperplate writing) in the school's log book. 'On books 53. Present 53. This happily conducted school continues to make excellent and efficient progress under the able and efficient administration of Mr Smart the present Headmaster. The children are most eager and interested in all classes and the work is entirely pleasant. The musical side is superior and the voices betray some distinct cultivation. There is some chanting and the seasonal hymn list is really known. The infants are cramped in their present class room but active steps are being taken to remedy this. Under Miss Corless the results are always pleasing and this year the oral answering is both brisk

and intelligent. There is some quite nice expression work and the knowledge of the Christian Year is excellent. For future years some dramatising is suggested and this should be practised in the open air. Class II is receiving highly conscientious instruction from Miss Walker and it must be remembered that five are newcomers. Some more insistence might be made upon meanings in memory work. Class 1 is doing excellently under the Headmaster's skilled instruction: a wide Syllabus is evidently well in hand. The memory work is very well recited and one rejoices in the fact that meanings have been emphasised. Progress has been made with Church History and in future use might be made of this in essay writing and possibly a visit of

BURTON TAXI



AIR & SEA PORTS / HOSPITAL VISITS
SHOPPING TRIPS & PUB RUNS

For a reliable service, please phone

MICK BARKER

01524 782842 / 0781 4967103

Agricultural Contractor

Jobs you haven't the time or the energy to complete yourself ? Costly tools needing hiring to do the work ?

Contact Graeme Woods for

- Hedge Laying
- All types of Fencing
- Mini Digger work
- Chainsaw work
- General farm/building maintenance

Mower and small square bailer, tractor and trailer

VAT registered. References available

Tel : 07887 623580 or 01524 782250

observation. The tone and the working conditions of the school are excellent and reflect greatly to the credit of all concerned.' The report was signed by Algernon T. Arrowsmith, Diocesan Inspector and also by the Bishop, 'Herbert Carlol'.

To crown a successful year Mr Smart recorded the 'Awards gained by Burton Scholars at the Art and Industrial Exhibition, 1st Prize Cotton Patch Isobel Metcalfe, Stocking darn May Braithwaite, knitted stockings Jessie Howarth, knitted lace Joan Bell, bread pudding Eldy Burrow, 2nd Prize boy's handwriting John Dobson, girls handwriting Isobel Metcalfe, rock cakes May Braithwaite, knitted stockings Dorothy Sandham, knitted vest Agnes Braithwaite (left school at Whit.)' Finally at Holme Sports on the first day of the Summer holidays a Morewood pupil Eric Parkinson was the champion athlete.



**BURTON AMATEUR
DRAMATIC SOCIETY**

ANNUAL GENERAL MEETING

The Annual General Meeting of BADS will take place on Monday 2 June at 7.30pm in the Burton Memorial Hall. Existing, former and new members most welcome.

Come along and see what fun amateur dramatics can be whatever your interest - on stage, backstage or front of house.

Below: Another of Edward Ellis' superb photos of the Coldwell Limeworks kiln referred to in David Craig's *Outdoors* article on page 4



 <p>GEC CLEANING SERVICES LTD</p>	 <p>DRY FUSION™ www.care4floors.co.uk</p>
<p>Cleaner, Drier, Protected Carpets in under 30 minutes</p> <p>Call Gary on 01524 782857 your <u>local</u> cleaning specialists</p>	

<p>Dr. Mark Mullineaux</p>	
<p>Personal Training and Conditioning Service</p>	<p><i>NSCA and YMCA Certified</i></p>
	<p><i>Full Bodystat® and kinetic chain analysis</i></p> <p>07866 144013 mark@ptcs.info www.ptconline.com</p>
<p><i>National Register of Personal Trainers</i></p>	

SLDC Recycling News

It is thought that the average household uses around 600 steel and 200 aluminium cans each year. That means over 40 million cans are used in South Lakeland every year. Both steel and aluminium cans are not only easy to recycle but doing so also uses less resources than making new cans from scratch. Whether you use your recycling box or a can bank there is no need to separate your steel or aluminium cans, they are sorted later. We do ask householders to clean cans out as it helps keep the boxes and banks clean and by using your old washing up water to rinse out your cans it reduces the need to use water later on in the recycling process.



Depends on You

and any residual waste. The clean metal can then be melted and formed into ingots suitable for re-use. These ingots are rolled for use as required by the manufacturer. This could be to make new cans or it could be for a new fridge to put your drinks in.

Every steel can contains around 25% recycled steel and around 60% of the aluminium used in the UK comes from recycled sources, more information about recycling cans is available at www.recycle-more.co.uk

If you have any questions about recycling or waste minimisation please contact us either through the Customer Contact Centre on 0845 050 4434 or by email at customer.services@southlakeland.gov.uk

The cans collected at the kerbside are taken to depots in Kendal and Barrow; the can banks are taken to Lancaster. They are then taken to recycling plants where the steel cans are extracted using an industrial magnet. The cans are also cleaned to removed labels

Thank you for recycling.
Andy Vickers, SLDC Recycling Dept.



MASQUERADE BURTON BALL

On Saturday 5 July Burton Pre-School shall be holding our 3rd Ball in the Memorial Hall. This year it will be themed "Black & White".

There will be tables of 4 plus people at £5 per head. You bring your own buffet and drink and we will provide the entertainment! The dress will be smart with masks and there will be prizes for both the best male and female. There will also be a prize for the best decorated table (can be done earlier between 5pm & 6pm). Doors open at 7.30pm for an 8pm start.

We will be having a disco, a music quiz, Whiskey roll, Auction, Raffle and spot prizes, along with lots of fun. This is open to all, so book now to avoid disappointment.

Tel: Nicola Little on 01524 784977 to reserve a table and tickets. Organised by Burton Pre-School

Paul Driver

Building Services



**New Builds & Conversions :: Extensions & Alterations
Stone & Block Work :: Roofing :: Ground Work
Paths & Driveways :: Mini Digger Hire**

Tel: 015242 63044 Mob: 07990 862063



Fully Qualified Childcare Staff

**For Pre-School Children
Aged 3 months To 4 Years**

Open daily Monday to Friday 7.30am - 6pm

Mobile Childcare Services available
For weddings, christenings, parties etc

SPOTTED DOG CHILDREN'S CENTRE
CLAWTHORPE HALL BUSINESS CENTRE
Tel : 01524 784321

Wheely Good Communities

getting more people cycling, more safely, more often

Freedom for the Family is this year's National Bike Week theme. If you're one of the many who've told us how much you'd like to get out biking as a family, enough talk, it's time for action.

We've loads going on this month so watch out for posters and leaflets, look us up on the web, or give us a call for details. But most importantly, get out your bike and come and join in. Let's see how many people we can get out celebrating the fun, freedom and fitness that comes when you leave the car behind and get on your bike. All welcome; age, experience or fitness no barrier; we go at the pace of the slowest, and it's often us!

Don't forget we have equipment you can borrow including bikes, trailer, tagalong, and child seat; call for details. And while all are welcome on our rides,

children must be accompanied and young solo riders must be able to ride safely and in control on the road.

Here's the schedule in brief, full details online:

Friday 13 June, 9.15 - 11.45am: Farmers Market Trolley Dash: Burton-Holme-Milnthorpe

Sunday 15 June, 1 - 4pm: Family Cycle Toddle, Burton-Cinderbarrow-Deerslet

Wednesday 18 June, 7.30 - 9.30pm: Ladies 5 Miles to Fabulous, Burton-Beetham-Holme

Friday 20 June, 7.30 - 9.30pm: Beautiful Bridleways Bash, off road in the AONB.



Call Kirstie or Stuart on 01524 782351 or drop us an email to wheelygood@familyonabike.org.

Website: www.wheelygoodcommunities.org

It's better by bike

Ian Donoghue **Quality Catch**

Finest Fresh Fish & Seafood

*In the Memorial Hall Car Park every Tuesday
from 1.30 p.m. - 2.00 p.m.*

*or if you would like me to call ring
01253 857683 or 07816 842797*

Westmorland Marquee Hire

Corporate • Weddings • Private Parties
"when it has to be right"

Free and comprehensive site visit service
Competitive prices. Clean, smart, modern equipment

01524 – 782 414

www.westmorlandmarqueehire.co.uk

Dalton Hall, Burton-in-Kendal, LA6 1NJ

info@westmorlandmarqueehire.co.uk

Prices start from under £600 for a marquee complete
with flooring and lighting suitable for 60 guests



An Evening of Wine and Roses

If you fancy spending a pleasant evening strolling around a lovely garden, glass of wine in hand, and the fragrance of roses filling the air, then make a date to come to Pear Tree Cottage, Dalton, between 6pm and 9pm on Wednesday 25 June.

Alec and Linda Greening will again be opening their garden for charity under the National Gardens Scheme. Entry is £4 per adult, including the first glass of wine. Parking courtesy of Russell Farm.

The garden will also be open on Sunday 20 July between 11am and 5pm. No wine, but refreshments will be served at Bell House Barn.

The Vicar Writes...

The Centre of History

"I am an historian, I am not a believer, but this penniless preacher from Galilee is irresistibly the centre of history."

So wrote famous novelist HG Wells concerning Jesus of Nazareth. What he observed as he looked at history is the central teaching of the Bible. History is His Story. It's all about Jesus. Look at what the apostle Paul writes about him:

"He is the image of the invisible God, the firstborn over all creation. For by him all things were created... all things were created by him and for him. He is before all things and in him all things hold together...." (Colossians 1:15-17)

And Jesus said these words of himself: "I am the Alpha and the Omega, the First and the Last, the Beginning and the End." (Revelation 22:13)

Jesus is irresistibly the centre of history because he is the creator of history, the reason for history and the goal of history. He makes sense of life on this planet. Down the ages, thinking people have despaired over 3 things: guilt, death and meaninglessness.

Where do we find an answer to the guilt that plagues us over the wrong we've done? In Jesus, the Lamb of God, who died to pay for our sin and banish our guilt,

leading us to the assurance of sins forgiven and acceptance before God.

Where do we find an answer to the fear that grips us when faced with our own death and the death of those we love? In Jesus, the Living One, who was dead but is now alive forever. We needn't be afraid. There is a future beyond the grave.

Where do we find an answer to the sense of meaninglessness that pervades western culture today? In Jesus Christ, the Alpha and the Omega, the First and the Last, the Beginning and the End – the one who brought this world into being in creation and the one who will bring it to an end in consummation.

It's as we look to Jesus as our Saviour and Lord, our Friend and Guide that our brief history on this planet becomes meaningful and our future hopeful and secure. There is a beginning. There is an end. There is an answer. Life is going somewhere under Christ's control. History is His story. My story only makes sense in relation to Jesus for in him all things really do hold together.

Paul

Notice:

If you would like to request prayer for yourself or for anyone else, please contact Paul on 781391



ST JAMES & HOLY TRINITY CHURCH TELEPHONE NUMBERS

Vicar:	Paul Baxendale	781391
Wardens:	Michael Carr	781283
	Janis Wood	781241
	Trevor Wood	781241
Treasurer:	Rebecca Jackson	782590
Secretary:	George Flanders	781729
Organist:	Kath Mills	732194
Choir Leader:	Kath Mills	732194
Reader:	David Mills	732194

EDWARD DUCKETT & SON

Joinery Specialists and Funeral Directors

Greenside, Holme, Carnforth,
Lancs. LA6 1PS

Tel. 01524 781232 (Joinery)
01524 784211 (Funerals)

PRIVATE CHAPEL OF REST

June Services

**at St James' Burton & at
Holy Trinity Holme**

Sun 1 June

09.30am	Holy Communion	Burton
11.00am	Holy Communion	Holme
06.30pm	Evening Church	Burton

Sun 8 June

08.00am	Holy Communion (BCP)	Burton
09.30am	Family Service	Burton
11.00am	Family Service	Holme
06.30pm	Evening Church	Burton

Sun 15 June

09.30am	Holy Communion	Burton
11.00am	Holy Communion	Holme
06.30pm	Evening Church	Burton

Sun 22 June

09.30am	Morning Prayer(BCP)	Burton
11.00am	Memorial Hall Service	Burton
11.00am	Morning Prayer	Holme
06.30pm	Evening Church	Burton

Sun 29 June

10.30am	Joint Family Service	Holme
06.30pm	Evening Church	Burton

St James' Church Online

<http://www.saintjamesburton.org>

Warton Methodist Church

Borwick Lane, Warton

Sunday Service: 10.30am

Whizz Kids :: Creche

(school-age children) (below school-age)

Youth & Family Worker

Bethany Scott

Minister - **Roger Moore**: 01524 65393

Church: 01524 732626

Yealand Quakers

Yealand Meeting House

18 Yealand Road, Yealand Conyers

**Our normal Sunday Meetings for Worship
are held from 10.30 - 11.30am**

Visitors are always welcome

For more information call:

01524 781601 or 01524 782052

or 01524 732336

St. Mary's R.C. Church

Yealand Conyers

Mass Times:

Sat 6.00 pm

Sun 9.00 am

Contact: **Fr. J. Bamber**

01524 732943

for further information

Deerslet Nurseries Garden Plant Centre



*"For a wide selection
of garden plants"*

OPEN

Monday – Saturday 10am – 5pm

Sunday 10am – 4pm

Tel: 01524 781777

www.deersletnurseries.co.uk



OPEN DAILY 10am - 4pm

Tel: 01524 782410

St. James' Cup Community 5-a-side Football Competition 2008

On Saturday 19 April, St. James' Church hosted the second St. James' Cup 5-a-side tournament on Burton Morewood School field.

With 19 teams entering the three age categories, the school field was packed with over a hundred footballers from Burton and the surrounding area. Despite the cold weather, plenty of family, friends and neighbours turned out to cheer the teams on, creating a fantastic atmosphere.

All games were played in a great spirit and it was wonderful to see everyone mixing together in what turned out to be a very enjoyable afternoon.

The under 11's age group was won by Skill Dude United, while the Playboys came out on top in the under 16's and Joga Bonito triumphed in the adult section.

To everyone who helped with the planning and running of the tournament, and to all who participated and watched, I'd like to extend a big thank you for making it such a fun occasion.

Paul Baxendale
(on behalf of St James Church)



Contract Hire (Business & Personal)
Personal Contract Purchase (PCP)
Finance Lease. Hire Purchase
Long & Short Term Contracts
Honest Sensible Advice
Special offers always available
Low or no deposit deals available
Authorised by major bank based funders
Premium brand specialists
Personal service guaranteed

Lakeland Suite, Clawthorpe Business Centre

TEL: 01524 784856 FAX: 01524 781417

EMAIL: malcolm@lvcontracts.co.uk

WEB: www.lvscars.com

Burton Out of School Club
for all your Out of School Childcare needs

Monday to Friday
7.30am - 9am £3.00 per session
3.15pm - 6pm £6.50 per session

Telephone Nicola on
07771 614 505
for information and bookings

Affiliated to Burton Pre School
(Registered charity no. 517138)

Prostate Cancer Tractors Pass Through Burton

On our way back from casting our votes on election day we were surprised to see a convoy of tractors heading south through the village. Thinking perhaps it was some local farmers coming to vote on the handiest transport, we were even more surprised that they waved enthusiastically as they passed us! That was when the penny dropped and we realised we'd seen the John o'Groats to Lands End tractor run in aid of prostate cancer which we'd heard mentioned on Radio Cumbria earlier in the day.

The aim of the tour was to raise awareness of and generate funds for the Prostate Cancer Charity. During the tour, which took 13 days to complete, four vintage tractors travelled through Edinburgh, Carlisle, Manchester, Birmingham, Bristol and Exeter and of course, Burton!

The tractors that took part in the run included a 1946 David Brown Cropmaster owned and driven by Michael Clancy. Painstakingly restored by him from a rusty pile of junk to its former glory, it uses TVO (tractor vaporising oil) as its fuel, and can belt along at 14 mph - flat out and with a tail wind!

The Cropmaster was accompanied by a 1958 international B450, a 1957 Fordson Major, and lastly a 1957 Fordson Dexter.

35,000 men in the UK are diagnosed with Prostate Cancer each year and 10,000 die of it – that's a shocking one man every hour!

The Prostate Cancer Charity is the largest and most comprehensive of the charities working specifically in the field of prostate cancer. Their aim is to provide 'hope for tomorrow' through the research they fund and 'practical support for today' through a helpline, specialist nurses programme, and information services. The £8000+ raised by the Tractor Run will help them in their work. For more info about Prostate Cancer contact the charity's confidential helpline 0800 074 8383 or see the website: www.prostate-cancer.org.uk

AN

THE
PROSTATE
CANCER CHARITY



MICHAEL PLATT PLUMBING and HEATING Ltd



CORGI N°

36856

BATHROOMS SUPPLIED AND FITTED
NEW H.E. BOILER FITTED
RENEWABLE ENERGY PRODUCTS
SOLAR PANEL

AIR SOURCE HEAT PUMPS

DAY TIME 07850 472780
NIGHT TIME 01524 782390

WEB SITE www.mplattplumbing.co.uk

Station Garage Arnside



Vehicle servicing & repairs (all models)
Free local collection
Loan Car
MOT Checks
Tyres / Exhausts



Tel 01524 761398

What's On?

See back page for more village events & activities



Holme & District Local History Society

Guided walk round Heysham

meet in car park in centre of Heysham village

at 7 pm

Monday 16 June

Members Only

Holme Social Club

Saturday 7 June

STEVE McDEE

60/70 & ELVIS

Members £1.00

Non-Members £3.00

Sunday 22 June

Family treasure hunt (pram friendly)
& BBQ

£1.50 per person

includes Hot dog or Beefburgder
& entry into treasure hunt.

Parents are responsible for their children

BMH = Burton Memorial Hall



Burton W.I. meeting at Burton Memorial Hall

Tribal Textiles & Embroideries of Gujarat

Liz Mathews

Thursday 12 June 7.30pm

Competition: A piece of unusual fabric
Hostesses: Mrs S Williamson & Mrs V Page

Contact: Helen Nixon 781048

Burton W.I. Charity Coffee Morning



**Saturday 21 June
10am -11.30am**

Burton Memorial Hall

The Wildlife Trusts Cumbria Bracken, Cattle and Rare Beauties

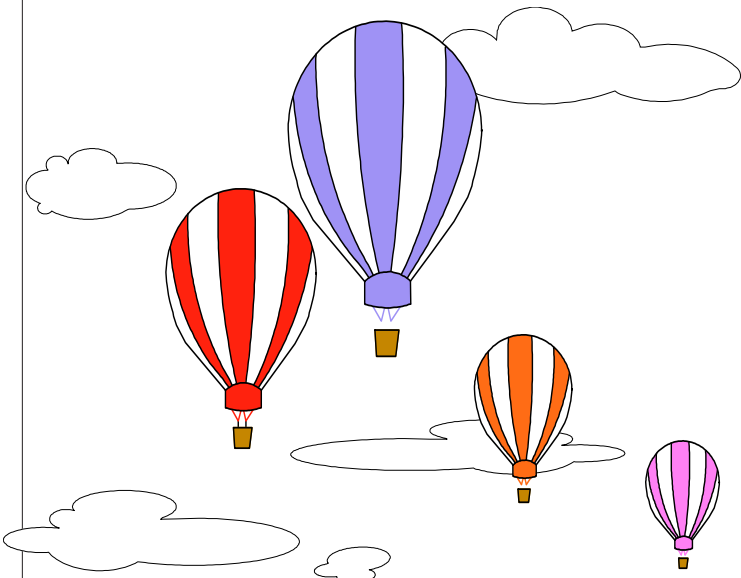
Come along to Hutton Roof Craggs Nature Reserve for a guided walk to see the fantastic flora, unique limestone landforms, rare and beautiful butterflies and the hardy hairy beasts that help to keep this internationally important reserve the very special place that it is.

Burton Fell & Lancelot Clark Storth
Meet at the entrance to the field off Clawthorpe Lane (grid ref: SD 543 783)

**Sunday 24 August
2pm - 5pm - approx 3 miles**

Suggested donation - adult £2, child £1

Enquiries: 01524 781145



What's On?

See back page for more village events & activities

County Library Van Times



The library van will be in the Memorial Hall car park every Monday between 10.00 - 11.00 a.m. Why not pop along and save yourself a trip to Kendal?



Burton Art Group

Mondays 2:00 - 4:00 pm

Burton Memorial Hall

For more details tel. 782749

Mobile Banking Service

Memorial Hall Car Park
Fridays 10.45am-11.30am

Cancer Care Cafe
Last Friday of every month
at Slynedales, Slyne Rd, Lancaster
(just over Beaumont Bridge)
Open for Tea and Coffee
10.00 am - 12 noon

Free Parking
Everybody Welcome!

Further details from 01524 381820

Library Coffee Morning



Burton Memorial Hall

First Monday of every Month

Come and Join Us!



Burton Ladies Rounders

June Fixtures

Tues 10 June Away Kirkby Lonsdale 7pm leave school
Mon 16 June Home Ingleton 7.15pm at school
Tues 24 June Away Wray 7pm leave school
Mon 30 June Home Clapham 7.15pm at school

All home & practice sessions on the BM School field

Circuit Training

Every Monday at 7.15 pm
BMH Main Hall

Every Friday at 6.15 pm
BMH Reception Room

Improve your Strength & Endurance
Cardio-Vascular System
Body Composition & Flexibility

For further info call John 01524 781707



LMMES

Cinderbarrow



Welcome to the miniature railway at
Cinderbarrow Picnic Area

Trains will run on most
Sundays & Bank Holidays
(weather permitting)
throughout the Summer
10.30 a.m. - 4.00 p.m.

For more details ring Peter Ellis, 781057

BURTON AMATEUR DRAMATIC SOCIETY

Annual General Meeting
at BMH

Monday 2 June at 7pm
Everyone welcome!

Burton & Holme Youth Club

Annual General Meeting
at BMH

Thursday 12 June at 7pm
All welcome!

~ **Burton Village Online** ~
www.burtonweb.org.uk

Your Virtual Community
Info ~ Chat ~ Events ~ Photos
Groups Websites

BMH = Burton Memorial Hall

Editorial...



Where were you all?

For the excellent production that BADS put on last month that is. Despite the greater-than-usual issues that any production faces, and the challenging play itself, the cast really pulled out all the stops and had the small audiences enthralled with their delivery of this new play from Kirkby Lonsdale playwright John Peel. The small audiences were a disappointment for Alison Murphy's final play but as BN goes to press there is the charity performance to look forward to that promises a packed audience at Kirkby Institute to end her BADS career on a positive note.

Parish Council Vacancy

Once again too few people stood for the Parish Council to need an election, but the PC still needs to co-opt a new councillor to replace the retired Janet Alderson. If anyone feels they want to do a bit for the village perhaps the Parish Council vacancy will fit the bill? Anyone interested should contact the Parish Clerk as soon as possible.

Boon Town Playground

A number of parents have felt the need to form a group to fundraise money to pay for the new playground equipment on the much-reduced play area at Boon Town. Why should they need to do this when the planning grant signed on 21 November included a condition for the provision of such play equipment by Impact Housing. Surely there should be no need to ask for residents to pay for this? If Impact do not provide the play equipment as per the planning consent surely it's up to the district and parish council to take this up with Impact to ensure they provide it. Otherwise, what's the point of having planning conditions at all if they can just be ignored by the applicant!

Can we or can't we put away the winter woolies?

Who knows, but here we are shivering when the porch thermometer a week ago was topping out at 80 in the shade! When it comes to the two schools of thought over global warming (i.e. we'll either fry or freeze) then it's looking like they'll both be right at the same time - which is a result neither would have expected no doubt.



AN & BJM

BN on Tape!



A reminder that *Burton News* can be obtained on audio tape for those with a visual impairment.

Please contact Judith Ellis on 781057 for further details.

ADVERTISE IN BURTON NEWS

Is your group or society organising an event or activity in Burton?
If so, tell us about it, and we'll advertise it for you for free!
See back page for how to contact us.

Annual Gift Subscriptions

If you know of anyone who may like to receive *BN* regularly each month, why not buy them an Annual Gift Subscription?

For £10 within the UK or £20 overseas they will receive a copy of *BN* each month (11 copies per year). A great way for family, friends and former residents to keep in touch with what's happening here in Burton. Anyone interested should contact *BN* at the address on the back page.



Advertising rates for both **Swap Shop** or **For Sale** is £1 per month per 3 lines (must incl. a phone number). Copy of advert & payment should be put into a sealed envelope marked *BN Sales & Swaps* and left at the newsagents or sent to our PO Box address (see back page). Cheques payable to *Burton News* please.

Reid & Mason Fine Jewellery

An exciting range of handmade jewellery using
semi-precious stones, freshwater pearls
and sterling silver

www.reidandmason.co.uk

Cressida Mason-Hornby

01524 781 574

COMMUNITY INFO



SLDC Recycling Information

Andy Vickers

Customer Contact Centre

on 0845 050 4434

email: recycling@southlakeland.gov.uk

Community Transport South Lakeland

If you need transport to hospital, doctor, dentist, optician, etc., please contact Mrs. Lynn Herd 01524 781905. If you could spare some time as a volunteer driver you would be most welcome.

Enquiries to above or 01539 742637

SURGERY TIMES

Dr JH Gorrigan

Monday 8.30am - 10.30am @ BMH

By appointment only. To make appointments please telephone 015395 63553

Child Health Clinic

1st Wednesday of each month

10.00 -11.00 am

No appointment necessary

Health Visitor: Shirley Bennett 015395 64887

Cumbria County Council Highways Hotline

0845 609 6609

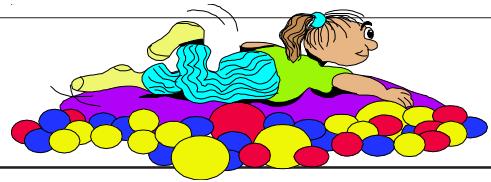
to report road or pavement problems

Useful Phone Numbers

Burton News Editors	01524 781306
Burton Post Office	01524 781828
Burton Morewood School	01524 781627
Dallam School	015395 63224
QES, Kirkby Lonsdale	015242 71275
CrimeStoppers	0800 555 111
Police non-emergency	0845 33 00 247
Kendal Library	01539 773520
Kendal Hospital	01539 732288
Lancaster Hospital	01524 65944

Council Switchboards

Cumbria County Council	01539 773000
SLDC	01539 733333



NSPCC Child Protection

HELPLINE 0808 800 5000

KIDSCAPE 08451 205 204

CHILDLINE

FREEPHONE 0800 1111

Civil Registration Services **Births, Marriages, Deaths**

Registration of Births and Deaths is overseen by the Kendal Registrar's Office, based in County Hall, Kendal. Telephone 01539 773566 or send an e-mail to kendal.registeroffice@cumbriacc.gov.uk

Registrations may also be undertaken at Milnthorpe and Kirkby Lonsdale Libraries by appointment only, contact the Kendal Office to arrange an appointment.

To arrange a marriage contact the Kendal Registrar.

BURTON-IN-KENDAL **PARISH COUNCIL**

The **Parish Council** meets every month on the third Thursday in the month at 7.30 pm in the Burton Memorial Hall. Members of the public are always welcome to observe the proceedings. At each meeting there will be an opportunity for members of the public to voice their concerns, under agenda item **OPEN FORUM**. The Parish Council hopes that parishioners will take advantage of this. **Planning applications:** Parishioners are asked to ensure they notify the PC as well as the planning authority of any comments or objections they have about any planning application within the parish. **The Agenda of the next meeting and Minutes of the last meeting** are always available on the Parish Council notice board outside the Burton Memorial Hall or on the Parish Council website. On the website parishioners may also vote on the current **HOT TOPIC**, leave comments or suggestions on the **FEEDBACK** board, find contact details for the Clerk & Councillors, and access the archive of PC agendas, minutes & reports.

www.burton-in-kendal-pc.gov.uk

FOR FURTHER INFORMATION, CONTACT
THE CLERK - Charles Dale
01524 781145

What's On?

See pages 24/25 for more Events Meetings and Activities

ADVANCE DIARY DATES

Burton Amateur Dramatic Society Annual General Meeting BMH - Monday 2 June 7.30pm

Annual Art & Craft Exhibition BMH - Saturday 7 & Sunday 8 June 10am - 4pm

Burton & Holme Youth Club AGM, BMH - Thursday 12 June, 7pm

WI Charity Coffee Morning, BMH, - Saturday 21 June, 10am -11.30am

An Evening of Wine & Roses, Open Garden, Pear Tree Cottage, Dalton - Wed 25 June, 6-9pm

Pre-School Masquerade Masked Ball, BMH, Saturday 5 July 7.30pm

Memorial Hall Table Top & Car Boot Sale, BMH - Sunday 6 July

Memorial Hall Management Committee Meeting, BMH, Thursday 17 July, 7.30pm

Stamp Fair, BMH - Sunday 20 July, 10am - 4pm

Open Garden, Pear Tree Cottage, Dalton - Sunday 20 July, 11am-5pm

Bracken, Cattle and Rare Beauties, wildlife walk, Sunday 24 August, 2-5pm

Stamp Fair, BMH - Sunday 5 October, 10am - 4pm

Pre-School Hallowe'en Party, BMH, - Sunday 26 October

BADS Autumn Play, BMH, - Sat 21 & Sun 22 November

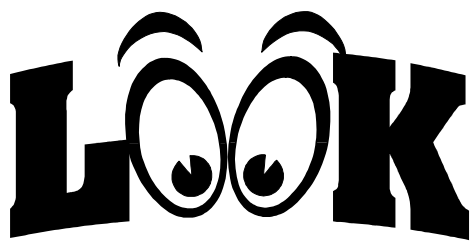
Sports Committee Bingo, BMH - Thurs 27 November

Memorial Hall Bingo, BMH - Thurs 4 December

Pre-School Bingo, BMH - Fri 12 December

Pre-School Coffee Morning, BMH - Sat 13 December

Bowling Club Bingo, BMH - Fri 19 December



BMH = Burton Memorial Hall

KEEP US IN THE NEWS!

If you are planning an event why not let us know asap and we'll add it to the running events list which we hope to include every month. This helps give your event more publicity and flags up potential clashes of dates for events. Let Burton News help you!

YOU TELL US, WE TELL BURTON

THE VIEWS EXPRESSED WITHIN BURTON NEWS ARE NOT NECESSARILY THE VIEWS OF THE EDITORIAL COMMITTEE

*You need
never be bored
in Burton!*

BURTON NEWS

Please send us your letters - articles - events news - stories - recipes etc for publication

Drop them into The Newsagents, Main St., Burton or post to BN, PO Box 86, Carnforth. LA6 1WY or by e-mail to editor@burtonnews.org.uk

LAST DATE FOR COPY FOR NEXT ISSUE
20 June for July issue

Next Meeting (open to all readers)
Monday 9 June 6pm in BMH