

INSIDE

Letters
pg 2

Outdoors
pg 4

Xmas in Burton
pg 6

An Opinion
pg 10

Historical Footnote
pg 13

Church Updates
pg 14

Village People
pg 18

Mining Mysteries
of Winter Hill
pg 20

Roger Reports
pg 22

Editorial
pg 29

Community Info
pg 31

Advance Diary
back page

Burton Preschool Christmas Fair

Saturday 10 December

10am - 11.30

Burton Memorial Hall

Lots of stalls, games and of course
the brilliant Christmas raffle

BURTON NEWS

THE VILLAGE NEWSLETTER

December 2011 Issue 210

St James' Church Christmas Coffee Morning

Saturday 3 December

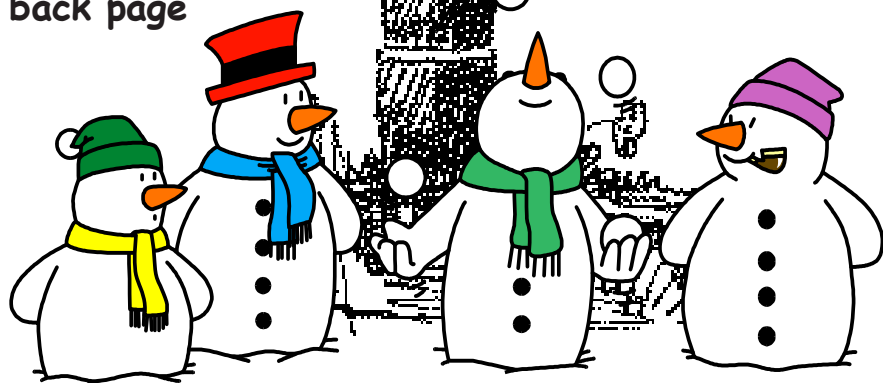
10am - 12 noon

Burton Memorial Hall

Bacon Butties, Coffee and Mince Pies
Mulled Wine and Cheese

Christmas Cards, Crafts, Cakes
and other stalls

Games, fun and much more!
Free entry! Everyone welcome!



Readers' LETTERS



Dear BN,

Local News Columns

If your Club/Society/Organisation would like an advertisement for a coming event or a report on something that has taken place, in the WG/LG, I would appreciate it if you could email me the details les.bye@tiscali.co.uk or telephone me on 01524 781784. The Gazette now want copy on a Friday for the following week, which is a nuisance as weekend events have to be left for the following week.

Joyce Bye, Local Correspondent WG / LG

Please would readers note that letters must include a valid name & address. This can be with-held from publication on request. We will not publish any anonymous letters, or material which, in the opinion of the Editorial Committee, is of an offensive or defamatory nature. BN reserves the right to edit letters & articles in the interests of magazine space.

Congratulations!

Winners of the BMH Quiz were:

1. Louise Dawson
2. Stephanie Mickelthwaite
3. Mr & Mrs. Frost of Yealand Redmayne

Thanks to all participants. 30 all correct quizzes were returned and £141 was raised for Memorial Hall funds.

M E R R Y
C H R I S T M A S

Brigitte, Paul, Angela and Dominic Rogers wish their friends and neighbours a Merry Christmas and a prosperous New Year.

J O Y E U X
N O E L

Anne Nichols (AWD) & Barry Morgan (BTS) would like to wish all their customers, neighbours and friends a very Merry Christmas, and a happy, healthy, peaceful and prosperous New Year.

F E L I Z
N A V I D A D

The *Burton News* Editorial Committee wishes all our readers, advertisers and subscribers the merriest of Christmases and the happiest of New Years!

F R O H E
W E I N A C H T E N

freedom
DRIVING SCHOOL

Pass first time

or receive free lessons until you pass

Call Richard on 01524 781704

www.freedomdrivingschool.biz


orchard
FINANCIAL PLANNING Ltd

Pensions, Investments, Savings, Inheritance Tax
Family & Business Protection

Stephen Dobson - Chartered Financial Planner

01524 781377

www.orchardfp.co.uk



THANK YOU!

A huge thank you to everyone who came and supported the recent Quiz in aid of the BBC Children in Need Appeal 2011. The Quiz raised a super £256 for the Appeal, and a good time was had by all apparently!

Thank you also to Ann and Neil at the Kings Arms for hosting the Quiz and to quizmaster Paul Rossi and his helpers who made it all happen on the night.

Do you want a venue for your charity event or quiz?

We can supply the venue and light refreshments free, or at nominal cost on a Wednesday or Thursday.

Please contact Ann at the Kings Arms:
01524 781409

GONNA MAKE YOU AN OFFER YOU CAN'T REFUSE...

YOU TELL US... WE TELL BURTON!

If you are planning an event in Burton let us know and we'll add a free entry to the list which we publish in every issue. This gives your event more publicity and flags up potential clashes of dates. Let BN help you make the most of your event!

Goad Joinery Ltd

All aspects of joinery including:

Renovation, Doors, Windows, Sky Lights, Flooring
Extensions, Fitted Kitchens, Fencing
Barge Boards & Soffits, Garage Doors
Loft Conversions etc

Trusted Time-Served Joiner

Call for a free estimate, no obligation

Burton in Kendal 01524 782939

Announcements...

Jim Barkley

I am profoundly grateful for, and deeply touched by, the many acts of kindness and support I have received during the long illness and sad death of my beloved husband Jim. I am indebted to Lynn Herd and the team of voluntary drivers, and especially to Barbara & Paul Rossi and all my wonderful neighbours, to Gill & Akis, to Kathryn & Peter Smith, the members of the Holme & District Photographic Society, to David Duckett of Edward Duckett & Son for his guidance and support, to Neil and Ann France at the Kings Arms, and finally, to the Reverend Paul Baxendale of St James' Church, and the Reverend David Barnett, Chaplain to the St John's Hospice at Lancaster.

Thank you all indeed,
Joan Barkley, Orchard Close, Burton

Margaret Metcalfe 1940 - 2011

Arthur Metcalfe would like to thank all the people of Burton for their messages of sympathy and kind thoughts received on the death of his wife, Margaret, on 2 November 2011.

Arthur Metcalfe, Boon Town, Burton

Angela Martin (fell asleep 11/11/11)

Brian, Edna & family would like to thank relatives, neighbours and friends for the many cards received on the sad loss of our beautiful brave daughter/sister/aunt Angela who fought till the end. R.I.P.

Pure Essence

In Need of some Winter Warmth Pampering?
Then why not call in and see us @ Pure Essence

New Treatments, New Pricelist, New prices...

Spa Packages for two now available

Open 7 days with easy car parking

pure
essence

For more information simply call in
or phone Sue on **01524 735240**

South Lakeland Leisure Village, Dock Acres, Carnforth
LA6 1BH (next door to Waters Edge Restaurant)



Outdoors

The nature reserve between the Clawthorpe road and Holme Park quarry is a place that has everything, as long as you don't expect to see roedeer cantering through every day or rare orchids springing out of the ground. This is nature, after all - unpredictable, often commonplace, always fresh and able to refresh us if we give it a chance.

Mind you, there are roedeer there. I've seen five in dozens of walks through it, bobbing and ghosting away amongst the bracken, beyond the whin coverts. Klipper the lurcher started one once, down a branch off the main path, and ever since she's hankered to follow scents down that particular green trod. And once we found a roedeer skull in the grass, and I set it up on a hawthorn branch like a totem.

The beauty of the reserve is its irregularity. The paths wind. Limestone crops up in little crags or lies about in



Photo: Edward Ellis © 2011

physio-4u

Web: www.physio-4u.co.uk Email: info@physio-4u.co.uk

**Sports Injuries - Back Pain - Neck Pain - Arthritis
Joint Replacements - Injuries after Accidents
Rehabilitation after Surgery**

Professional, experienced, efficient and friendly

Clinics at Ashtrees Surgery and
The Lakeland Leisure Village

**Diane Lord - Chartered Physiotherapist
MSc Exercise and Rehabilitation**

Appt. or Advice 07947 727 533



**31 St James' Drive
Burton-in-Kendal
07879 681712
01524 781173**

**Brickwork • Blockwork • Stonework
Groundworks • Drainage • Driveways
Heavy Landscaping • Extensions
Bespoke Stonework**

grown-over quarried dumps. The trees were never planted - they seeded themselves: ashes a century old, hawthorns of all ages, from a metre high to their maximum of five metres or so, which have been so laden with berries this year that they look like hearths full of embers. Whin flourishes in huge spiky masses, dividing the ground into glades where roedeer and rabbits have their lairs and warrens. Nothing is for use here. It just is.

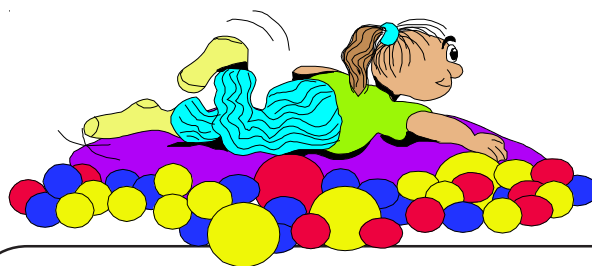
I admire the way the reserve is managed, i.e. lightly, with a minimum of tending or marking. Sometimes a swathe of bracken is mown, in case the coarse plant overwhelms all else. Sometimes a whin bush is lopped, in case a path gets blocked entirely. The new direction posts strike me as unnecessary, because all you need to do here is wend your own way. What look like dead ends among impenetrable bush thread through into clearings with flayed rock floors. These must have been quarried long ago, before they began digging deep at Holme Park (whose heavy machinery can be heard grinding and banging a few yards to the north.)

Most days nothing seems to happen here, which means to say that a thousand trees happen, and a million flowers and grasses, and dozens of birds and rabbits. On a dreary autumn day each haw has a droplet clinging to it, making a double gem: ruby or garnet twinned with diamond. The wee red fruit and the translucent drop are an epitome of the year: above, the sun's heat stored as colour; below, the season of low light, white or grey, and the day snuffed out early.

Some days, a raven barks its way across the sky. Or a

clump of wild solomon's seal opens its pale bell-flowers in the shade of the whin. Or a pair of black pheasants scuttle across an open ride, then hurtle off honking like an old-fashioned motor horn. All these keen morsels of life - sometimes glimpsed, sometimes not. The place is wild enough to make you forget that a tarmac road and a huge working quarry are only a few yards away on either side. To the east, beyond the trodden paths, you enter a zone of tangled bush and lumpy outcrop. The trunks of beech and sycamore, hazel and holly and wild cherry, shoulder upwards between tilted rocks. One huge oak spreads magnificently in its own clear space. Limestone pavement covers the ground with tables and benches upholstered in green moss like Victorian furniture. Here is a piece of Westmorland fellside getting on with its own life.

David Craig



**NSPCC Child Protection
HELPLINE 0808 800 5000
KIDSCAPE 08451 205 204
CHILDLINE
FREEPHONE 0800 1111
BULLYING UK HELP SITE
<http://www.bullying.co.uk/>**



GEC Cleaning Services Ltd
Estab. 1996

The personal, professional
cleaning service for your
carpets, upholstery - and
much, much more!

A FREE bottle of our own brand carpet spot
remover given with every quotation - our
quotations too are free and without obligation

**Call Gary on 01524 782857
&/or visit www.geccleaningservices.com**

MO WITHAM
*Painting
Decorating*

Any Size of Job
Completed to YOUR
Satisfaction

**PHONE: BURTON IN KENDAL
01524 781447**

Burton Village Store & Post Office



- Euros & Dollars on demand
- Other Currencies can be ordered to arrive next day
- Award-winning Travel Insurance

Flowers – send flowers by post

Stuck for a gift idea ?

High Street Gift Cards (£10 to £100) Over 17,000 UK outlets, Argos, B&Q, Boots, Debenhams, Halfords, PC World etc. Spend in one shop or several.

Award winning Greek Olive Oil

Other Greek products: Baclava pastries, Dolmades, Gigantes, Houmous, Olives

Local products on sale

Potted Shrimps, Dressed Crab - James Baxter & Son
Marmalades & Chutneys - Sue Prickett, Hutton Roof
Juices - Bloom Berry Juice Co., Carnforth
Flapjacks - Staff of Life, Kendal



Fresh Vegetables Daily
(orders taken – please enquire)



01524 781828



Letters to Father Christmas

The last posting date to write to Santa/Father Christmas and receive a reply pre-Christmas is Wednesday 14 December, although Royal Mail cannot guarantee to respond to all letters received.

Letters to Santa/Father Christmas should be addressed as follows:

Father Christmas (or Santa)
Santa's Grotto
Reindeer Land
SAN TA1

Don't forget to write your own name and address clearly on the letter!



NEWS

December Xmas Post Dates

Airmail

Monday 5 December South & Central America, Caribbean, Africa, Middle East, Asia, Far East (including Japan), Australia & New Zealand

Friday 9 December

Eastern Europe, USA, Canada

Monday 12 December

Western Europe

BFPO

Friday 2 December Airmail to Operational BFPOs

Thursday 15 December Airmail to Static BFPOs

UK

Wednesday 14 December

Standard Parcels

Saturday 17 December

2nd Class post

Tuesday 20 December

1st Class post

Thursday 22 December

Special Delivery

Please ask at the Post Office for details of Parcelforce dates and for help with parcel sizes.



December musings from the Village Store...

Stuck for Christmas Ideas? How about...

- ◆ A Burton & Dalton Calendar 2012
- ◆ Go Greek – give a bottle of award-winning Greek Olive Oil or Balsamic Vinegar or a selection of Greek meals and appetisers. New additions to our range are Greek Honey and Tomato Sauces made by Nikos Papayiannides on the island of Lesvos.
- ◆ A High Street Gift Card - available from £10 to £100 (now with no fee), they can be spent in over 17,000 UK outlets, including Argos, B&Q, Boots, Debenhams, Halfords, PC World. Spend it all at one shop or a bit here and a bit there.
- ◆ Send Christmas Flowers or a Plant – pick up a leaflet and order at the counter.
- ◆ A Romney's Gift – a selection of Kendal Mint Cake, fudge or truffles.
- ◆ A selection of Belvoir Fruit Cordials
- ◆ A jar (or two) of Sue Prickett's tasty marmalade or chutney.
- ◆ Treat yourself to some Potted Shrimps or Dressed Crab, supplied by James Baxter & Son
- ◆ Stocking fillers – Notecards, Stickers, Activity Books
- ◆ Christmas Bread, Fruit & Veg. (and all year round)

As usual we expect to have daily deliveries of fresh bread, fruit & vegetables up to Christmas Eve morning. Although we normally only stock a limited range, the suppliers can provide most fruit and veg. on request (though that Cinderella Pumpkin remains elusive.) A number of customers are now taking advantage of our daily deliveries and ordering their fruit and veg. from us.

Thank you for your custom during 2011. We wish you and your family a joyful Christmas and a Happy New Year, from all of us in the shop - Barbara, Beverly, Cally, Elaine, Peter, Veronica, Gill & Akis, and from your paper delivery team, Bryan & Sandra.

**BURTON
TAXI**



AIR & SEA PORTS / HOSPITAL VISITS
SHOPPING TRIPS & PUB RUNS

For a reliable service, please phone

MICK BARKER

01524 782842 / 0781 496 7103

**Unique handmade jewellery and rings
in precious and semi-precious materials**

We create **jewellery** exclusively for you, and to your budget.
Gifts for him and her.

See our fabulous range of **Christmas** gifts.
Gift vouchers available.

Visit our studio at Greenlands Farm,
Tewitfield or call us on 01524 784187
email: info@macmillan-clare.co.uk

Macmillan-Clare

DESIGNER GOLDSMITHS



www.macmillan-clare.co.uk

:: Village Store :: Newsagents :: :: Post Office ::

CHRISTMAS & NEW YEAR OPENING HOURS

	SHOP	POST OFFICE
CHRISTMAS EVE Saturday 24 December	6.00am - 1.00pm	9.00am - 12.30pm
CHRISTMAS DAY	CLOSED	CLOSED
BOXING DAY	CLOSED	CLOSED
Tuesday 27 December	7.00am - 1.00pm	CLOSED
Wednesday 28 December	6.00am - 6.00pm	9.00am - 5.30pm
Thursday 29 December	6.00am - 6.00pm	9.00am - 5.30pm
Friday 30 December	6.00am - 6.00pm	9.00am - 5.30pm
NEW YEAR'S EVE Saturday 31 December	6.00am - 1.00pm	9.00am - 12.30pm
NEW YEAR'S DAY	CLOSED	CLOSED
Monday 2 January	7.00am - 1.00pm	CLOSED
Tuesday 3 January	6.00am - 6.00pm	9.00am - 5.30pm



Burton Pre-school Christmas Fair **Saturday 10 December** **Burton Memorial Hall** **10am - 11.30am**

Lots of stalls, games and of course the brilliant Christmas raffle

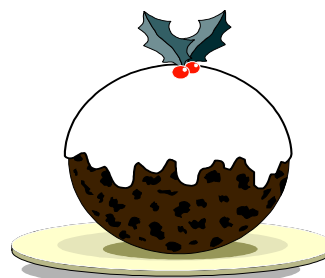
*If you would like a stall
contact Norma on 0758 004 6501*

Santa Claus is coming to Burton...

Santa Claus will be brought to Burton
in his sleigh by the Rotary Club of Carnforth
on Thursday 8 December

Proceeds of collections go directly to well known
local causes and other Rotary supported charities.

Carnforth Rotary Club Charity Trust Fund
Registration Number 1037442



THE ULTIMATE CHRISTMAS PUDDING
(made in Kendal - low food miles!)
Sold in aid of ACTIONAID
(registered charity no. 274467)

Prices held for another year
454g / 1lb - £5.00
120g / 4oz - £1.50

Available from Graham & Gil Caley
The Covenant, Vicarage Close
Tel: 01524 782299

All profits go to helping
Third World countries

CHRISTMAS & NEW YEAR AT THE KINGS ARMS...

The Kings Arms Christmas Fayre menu will be served from Monday 28 November to Friday 23 December, throughout the day, and all our seasonal menus for Christmas/New Year are available - pop in and take a look and book early!

We will have a Children's Christmas Postbox available in the Kings from Thursday 1 December, please remind the children to write their name and address on the back of envelope so Santa knows where to go!

Thursday 1 December also sees the switching on of our Christmas lights, so why not come along and enjoy a glass of mulled wine, mulled cider or a hot toddy.

On Thursday 8 December we have Carols by Candlelight performed by the children from Burton Morewood School. Everyone welcome, complimentary mince pies.

Friday 9 December we will be at the Burton Morewood School Christmas Fair, come along and visit our home made produce stall. If we run out of any produce just place an order with Ann, for collection at your convenience. All monies raised from the Carols and the Produce Stall will go to school funds.

Saturday 10 December - it's Neil's Birthday Bash! With live music by the Aurora Function Band, everyone welcome!

The elves have told us that Santa will be visiting us at the Kings on Thursday 15 December, so do bring the children to have tea with him. Book your place now as he'll be very popular!

Christmas Eve - Enjoy a leisurely meal with entertainment, bookings now being taken. We'll be serving our famous "chippie tea" from 4pm - 7pm for families wanting to get their "little angels" to bed early!

We are open for drinks on Christmas Day from 12 noon until 2.30pm. If you know of anyone elderly or infirm in the village who doesn't have a carer on Christmas Day, please let us know as soon as possible, as we will deliver a Christmas lunch to those who need one.

Boxing Day morning - Enjoy brunch with newspapers and Buck's Fizz from 9am till 12 noon, book early as we were fully booked last year! (Remember we serve brunch every weekend morning.)

New Year's Eve - Book your table early, entertainment till late!

New Year's Day - Brunch with newspapers and Buck's fizz from 9am till 12 noon - again please book early!

As the Village Store will be closed on Boxing Day morning & New Year's Day morning, if you require a newspaper at home, please order early with Neil or Ann and there will be one for you to pick up from the Kings from 9am, or if you are unable to get out we will deliver.

Wishing you all a happy and peaceful Christmas and New Year from all the team at the King's Arms.

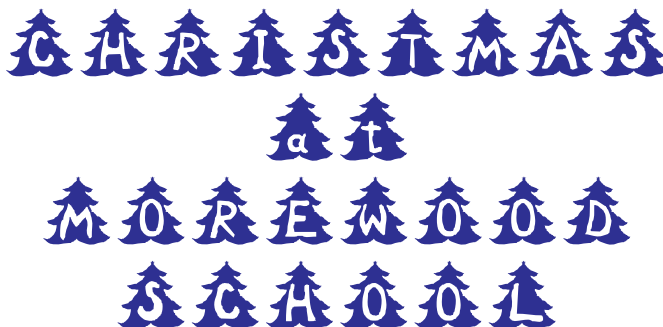
The Kings Arms, Burton 01524 781409

Christmas Fayre menu Mon 28 Nov to Fri 23 Dec
throughout the day - book early

**Don't miss Neil's Birthday Bash
with live music from Aurora
Sat 10 Dec from 8pm**

OPEN ALL DAY EVERY DAY FOR DRINKS
Meals 12 - 2pm & 5.30 - 9pm Mon & Tues
& all day Wed - Sun until 9pm
Breakfasts every morning 9-11am (9-12 at weekends)

Take-away food & drinks available
We can deliver food locally if you are unable to collect



Carols in The Kings Arms, Burton
Thursday 8 December at 6.30pm
Come along and join in the singing!

Burton School Christmas Fair
Friday 9 December
Stalls, games, raffle, refreshments
and a special visit from Santa!

Children Singing Carols
St Nicholas Arcade, Lancaster
Sunday 11 December 1.30 - 2.30pm



An Opinion...

Commenting on the goings-on at the
Parish Council meetings

BOGGED DOWN BY DRAINAGE ISSUE

(It comes later in this Parish Council report, but
An Opinion couldn't resist the headline!)

This very issue marks the tenth anniversary of An Opinion's column. So first I'd like to thank all those on the 6-member cttee (and some readers) who have given her their support through some pretty sticky incidents, with threats of legal proceedings, and so on. In particular here I'd like to recall the stalwart backing of the late Harold Gunson our erstwhile treasurer, who took the war, so to speak, into the enemy's camp. Without the backing of all this gang, A.O. would have thrown in the towel long ago. Thanks too to the Parish Clerks who have always been helpful, whatever their private opinions. It seems to get harder and harder to write this monthly piece. For one thing, nothing much changes: holes and potholes appear, roads flood, donations are given – or withheld – and verges are cut, or not.

The dangerous thing is that over the years A.O. has become rather fond of this motley crew that is our Parish Council. Fortunately, it has to be admitted, that the converse is unlikely to be the case, or all objectivity would be lost. A.O. is by now an old lady. Please can't some bright spark take over and breathe fresh life into

these reports? It is far more fun for A.O. herself to bring the hare-brained exploits of Percival Incomen Roper to readers' attention. But back to business....

PUBLIC FORUM

Police Report

PCSO Jess Bullock reported that there had been no incidents in Burton, but there were continuing metal thefts in the area. She urged support for the e-petition to prohibit the sale of scrap metal to dealers for cash.

Jubilee Walks

A member of the public proposed that she could organise a series of walks similar to those conducted previously around the locality to celebrate the Diamond Jubilee. PCllrs accepted this idea with enthusiasm.

Kidnapper Lane

A resident commented on the poor state of Kidnapper Lane. It was agreed by all that hedges had been allowed to encroach from the gardens of Vicarage Close beyond the fence boundaries. A PCllr remarked where once there had been an 8ft wide path, this had now narrowed to around 3ft, and a tractor could no longer be driven along the way. As the path narrowed, it became muddier with use. There was a curious reluctance on the part of some PCllrs to take any useful action about this, despite the fact that Burton boasts the services of an excellent lengthsman. It was, said the Chairman, up to CCC to care for footpaths. Now it happens that funds earmarked for the lengthsman's wages are underspent, so A.O. wondered if this wasn't a touch miserly. Others were more positive, and one PCllr offered to see what action could be taken to trim back the hedges. The resident who raised the matter

**DIGITAL TV AERIAL
AND SATELLITE FROM
NBC-SKYNET**

tel 07710 400 499

or 015395 62561

**LOCAL- PROFESSIONAL- RELIABLE
GET SET FOR DIGITAL !**

**CLAWTHORPE
HALL
BUSINESS
CENTRE**

Unique Office Units
for Sale / Lease

Small to Medium Sized
Local Business

57sqm Conferencing Facilities, Spacious Reception Area,
Dedicated Conference Coordinator, Free Parking
Open 7 Days per Week, Available to Everyone

Contact Sarah on 01524 784320

or visit www.clawthorpehall.co.uk

Duckett Ltd trading as Clawthorpe Hall Business Centre - Reg. England & Wales
Company No. 3763469 VAT No. 733 8445 21

suggested that a group of volunteers could possibly be formed to keep footpaths and so on, tidy. A.O. expected this would be seized on with enthusiasm, but PC response was pretty lukewarm. Hopefully the said resident won't lose heart, and will play an active part in parish affairs.

End of Public Forum (to the resident's credit, he remained for the rest of the meeting. A.O. hopes he didn't think it was impolite to leave at this point.)

Christmas Tree Lights

Oh dear! The one jolly item in the whole year seems to be falling into disarray. As reported (for about the last three issues AT LEAST by A.O.), a resident had suggested that the trees in the BMH carpark should have lights, rather than the somewhat modest array on the sides of the Hall. The BMH Cttee appeared to drag their feet about this, and time has gone by and no decision one way or another seems to have been made. From what A.O. could gather (and this may be garbled) funds have been offered by the executors of the Bob Mason Bequest to go towards the lights. What a brilliant idea, thinks A.O. let's have some jollity. But not yet, it seems, if ever. In any case, it's suggested the lights should be blue, and you can't get much more low-key than that. Then again some bright spark has thrown a spanner by suggesting the lights should be on ALL year. What's the point in that? wondered the PC, with some justification. In the end the PC Chairman suggested the BMH should organise the matter themselves, with the PC helping with funding for maintenance in future years. What a pity. Bob Mason would no doubt have been very frustrated that his gesture should have resulted in such twittering about.

Worse still, we may not get our lights.

South Cumbria Water Level Management Group

Saving the hardest bit till last, A.O. will now grasp the nettle and try to report this rather significant item. As most will be aware, flooding in the Lyth Valley has been contained by pumping and other methods unclear to A.O., so that the flood plain has been available for farming and other uses. Clearly this incurs considerable expense, which everyone is doing their best to duck out of. (At this point A.O. has to acknowledge Peter Smith's Minutes. Couldn't do without them). There is a school of thought that believes the flood plain should be left to do what it does best, i.e. to flood. The present agency who manage the pumping are going to withdraw. Management will now be in the hands of the Agency headlined above (SCWLMG.) It was formerly called the Lyth and Winster Land Drainage Group. This is where all of us come in, because we can alert the authorities (or our own PCllrs) to our opinions. The idea seems to be that an internal drainage board will be created in south Cumbria which will have the power to tax all areas in the water catchment area (that includes Burton.) This additional tax would amount to around £8 p.a., though it would be offset by subsidies and end up at around £2 (possibly.) Businesses in the area would pay a higher rate. Needless to say, PCllrs weren't enthusiastic about the idea.

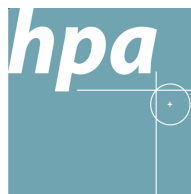
Their thoughts were as follows: (though the truth is that the Minutes put it far clearer than they did!)

1. It is agreed that drainage ditches on Burton and Holme Moss should be kept clear.
2. It's uncertain that the project will work. (A.O.'s

HARRISON PITT ARCHITECTS

Architects & Code for Sustainable Homes Assessors

Housing : Commercial : Heritage
Education : Community : Leisure



29 Castle Hill
Lancaster
LA1 1YN

RIBA 
Chartered Practice

01524 32479
www.hparch.co.uk

Elmsfield Mowers

Unit 4B
Holme Mills Industrial Estate
Holme, LA6 1RD

Mowers - Strimmers - Hedgetrimmers - Chainsaws
Serviced - Repaired - Sharpened

Ring Eddie

Tel / Fax : 01524 784747
Mobile : 07785 521635

interpretation)

3. The PC believes the boundaries set are not in line with advice given to drainage boards, and may well only be to increase the tax base. It may be preferable to seek alternative solutions e.g. the Environment Agency or the county council supporting land owners to maintain the gravity ditches across Burton Moss. It was clear from what was said that PCllrs would welcome input from Burtonians, and A.O. recommends consulting the Minutes of the meeting.

Truth to tell, trying to make sense of that has quite exhausted A.O., so I'll leave the mugs-for-Jubilee-children till next time and go downstairs for a gin and tonic. Cheers!
A.S.



St James Church Christmas Coffee Morning

Burton Memorial Hall
Saturday 3 December
10am -12 noon

Bacon Butties, Coffee and Mince Pies,
Mulled Wine and cheese

Christmas cards, crafts, cakes and other
stalls

Games, fun and much more!
Free entry! Everyone welcome!

Burton Tech Support For all your computer needs

- * upgrades
- * training
- * networking
- * internet (including broadband)
- * repairs
- * security
- * virus removal

Call Barry on 01524 781306
E-mail bts@yobunny.co.uk

Models Needed

We are always on the look out for families, children teens and couples to act as models on our training shoots, (no experience needed.) In return for your time you will have a truly different and exciting experience as well as receiving a range of beautiful images for you to keep free of charge

If you would like to find out more information please call

Rachel on
01524 782200
or email
studio@aspirecpt.co.uk

Aspire
photography training

Aspire Photography Training - The Stable Yard, Dalton Hall, Burton In Kendal



**BURTON AMATEUR
DRAMATIC SOCIETY**

Back By Popular Demand!

Burton Amateur Dramatic Society
proudly presents

Death In Suspicious Circumstances

A Murder Mystery Night
With Hotpot Supper

Friday 27 & Saturday 28 January 2012
Burton Memorial Hall

Tickets available from Burton Village Shop
from 9 January
or from Alyson Yates tel: 01524 781498



**Dalton Hall
Business Centre
Burton-in-Kendal**

Meeting Room Hire

All Enquiries 07881 930139
offices@daltonhall.co.uk
<http://www.daltonhall.co.uk>

Historical Footnote by Roger Bingham

The Queen's First Jubilee

With plans in hand for the Diamond Jubilee bonfire on Farleton Knot, and other celebrations being discussed, I have been looking back at how we marked the Queen's Silver Jubilee in 1977. To those of us who could (just) remember seeing the murky grey images, on the first televisions, of the accession events in 1952 and the Coronation in 1953, times had changed a lot in the previous quarter of a century. In 1952 there was only BBC TV 'station'; by 1977 there were four channels offering 'Jim'll fix it' and 'Mike Yarwood' on BBC 1, 'Open University' and 'Wodehouse Playhouse' on BBC 2, 'The Muppets' and 'The Invaders' on Granada and 'The Roses Cricket Match' and 'All you need is Love' on Border.

Nationally there were worries about Britain's remaining in the European Common Market. There was double-figure inflation, especially in house prices, so that a detached four-bedroom house with 'full central heating and a fitted kitchen' in Burton Park was on sale for £15,000.

In Ambleside there were fears that a new 'self-service' store might harm shopkeepers, but locally we still had Co-ops in villages like Holme, Endmoor and Milnthorpe, where Lancastria's Jubilee offers included Luxury Soft Margarine at 15p, Jubilee Strawberry Flavoured Drink 11 oz can 11p, and Jamaican Bananas at 19p per lb. Upmarket Booth's of Highgate, Kendal (not yet a supermarket) advertised Cyprus Sherry at £1.12

compared to Bristol Cream at £1.89, Bacardi for £4.79 and Jaffa Grapefruits at 9p each. Motoring costs were increasing so that petrol was approaching £1 gallon, but you could get a 1977 Volvo for £2,350 and a 1971 Marina 1.3 for £600.

The Westmorland Gazette highlighted its Jubilee round up with reports of a long haired Prince Charles visiting Windermere, and there was also photo of an even-more hirsute Roger Bingham opening Milnthorpe's Jubilee History Exhibition. The main pictures were of a massive pageant in Kendal, but there was also an excellent photo of Henry VIII and his six wives parading through Burton. Please let us know who they were/are?

According to the Burton local correspondent, 'the village celebrated the Jubilee in great style with something for everyone all through the week.' The weather did not spoil the pleasure of the onlookers or participants. A family service conducted by the vicar Rev J.C. Langham was held on Sunday 5 June at St. James' Church. On Jubilee Day the Queen was crowned and the children received mugs from Mrs R. Boddy of Curwen Woods. Jubilee crowns were given to the 13-17 year olds in the evening at the Memorial Hall, where as a grand climax there was a dance and a teenage disco.

Though there was chain of beacons on surrounding hill tops from Clougha, Warton Cragg, Arnside Knott, Heversham Head and stretching northwards into the Lakeland heights and to the east from Ingleborough to the Howgills, there was no mention of a Jubilee Beacon for Burton, is this correct?



Burton Based Driving Instructor

Dual-controls, patient and friendly
Free Theory Training
Pass Plus and Motorway Training
Nervous pupils welcome

**Learning for the first time
or coming back to driving**

Call Chris on 782645

COLIN HARPER BUILDING SERVICES

* alterations	* extensions
* plastering	* roofing
* patios	* stonework
* drainage	* tiling

**Quality work at competitive prices
Free estimates**

**Tel: 01524 781194
Mobile: 07880 925170**

39 Trinity Drive, Holme, Carnforth, LA6 1QL

The Vicar Writes...

The hidden meaning in “The Twelve days of Christmas”

Ever wondered what the song “The Twelve Days of Christmas” is all about? It's actually Christian code. In 16th century Europe, under religious persecution, Christians developed creative ways to teach children biblical truth. One popular means was to use lyrics and song. “The Twelve Days of Christmas” is an example.

On the first day of Christmas, my true love gave to me... a partridge in a pear tree. “My true love” is God. The partridge is a valiant bird, willing to fight to the death to defend its young. The pear tree represents the cross. John 10:14-15.

On the second day... two turtle doves. Following the birth of Jesus, Mary and Joseph presented him at the temple in Jerusalem, offering the gift of two doves to honour God. Luke 2:22-24.

On the third day... three French hens. Only the rich could afford French poultry. These costly birds symbolised the three gifts given to Jesus by the wise men – gold, frankincense and myrrh. Matthew 2:11.

On the fourth day... four calling birds. Like birds calling out with distinct voices, the four Gospel writers Matthew, Mark, Luke and John called people to faith in Jesus as their Saviour. John 20:31.

On the fifth day... five gold rings. Five gold rings represent the first five books of the Bible. These books, written by Moses, were treated with great reverence and considered to be worth far more than gold. Deuteronomy 34:10-12.

On the sixth day... six geese-a-laying. Eggs symbolize new life. Six geese laying eggs are the six days of creation when God, by his Word, brought forth life on earth. Genesis 1:1,31.

On the seventh day... seven swans a swimming. Seven swans symbolize the seven gifts of the Holy Spirit. Just as cygnets grow and change from “ugly ducklings” into

beautiful and graceful birds, so do God's children grow and change when they use their gifts to benefit other Christians. Romans 12:5-8.

On the eighth day... eight maids-a-milking. The eight maidens represent eight unique teachings of Jesus, the Beatitudes, which feed and strengthen us as milk nourishes a child. Matthew 5:3-10

On the ninth day... nine ladies dancing. Nine ladies are the nine fruit of the Holy Spirit produced in the lives of God's children. The ladies dance joyfully and Christians rejoice over the life-changing fruit of the Holy Spirit. Galatians 5:22-23.

On the tenth day... ten lords-a-leaping. Lords were men with authority to command people's obedience and they symbolize the Ten Commandments. Exodus 20:3-17.

On the eleventh day... eleven pipers piping. Eleven pipers represent the eleven apostles who were chosen by Jesus and remained faithful to him (not including Judas who betrayed Jesus). Like children joyfully following a piper, the disciples followed Jesus. Mark 1:16-18.

On the twelfth day... twelve drummers drumming. Drummers beat out a loud, steady rhythm for marchers to follow, and the twelve points in the Apostles' Creed sound the truths of the Christian faith.

Why not count down the twelve days of Christmas in your family? Not just in code, but as it was meant to be. Happy Christmas.

Paul

EDWARD DUCKETT & SON

**Joinery Specialists and
Funeral Directors**

Greenside, Holme, Carnforth,
Lancs. LA6 1PS

Tel. 01524 781232 (Joinery)
01524 784211 (Funerals)

PRIVATE CHAPEL OF REST

December & January Services

St James' Burton & Holy Trinity Holme

Sunday 4 December

10.00am Morning Church (+ Communion) Burton
04.00pm All-age Christingle Holme

Sunday 11 December

08.00am Holy Communion (BCP) Burton
10.00am Morning Church All-age + Nativity Burton
11.00am Morning Church (+ Communion) Holme
06.00pm Evening Church Burton

Sunday 18 December

10.00am Morning Church Burton
11.00am Carol Service Holme
06.30pm Carol Service (by candlelight) Burton

Christmas Eve 24 December

11.15pm Holy Communion Burton

Christmas Day 25 December

10.30am All-age Christmas celebration Holme
(followed by Communion)

Sunday 1 January

10.00am Joint Morning Church (All-age) Burton

Sunday 8 January

08.00am Holy Communion (BCP) Holme
10.00am Morning Church (+ Communion) Burton
11.00am Morning Church Holme
06.00pm Evening Church Burton

Sunday 15 January

10.00am Morning Church Burton
11.00am Morning Church (+ Communion) Holme
06.00pm Evening Church Burton

Sunday 22 January

10.00am Morning Prayer (traditional BCP) Burton
11.00am Morning Church (HuB All-age) Holme
06.00pm Evening Church (Prayer & praise) Burton

Sunday 29 January

11.00am Joint Morning Church (All-age) Holme

If anyone will need a lift to either
Burton or Holme church
please contact either:
Janis (781241) or
Richard (015395 64239)

Prayer Requests

If you would like to request prayer for yourself or for anyone else, please contact Paul on 781391.

www.stjamesburton.org

St James' Church Online

ST JAMES & HOLY TRINITY CHURCH TELEPHONE NUMBERS

Vicar:	Paul Baxendale	781391
Wardens (Burton):	Michael Carr	781283
	Janis Wood	781241
	Trevor Wood	781241
Wardens (Holme):	Geoff Wragg	781758
	Richard Lea	015395 64239
Treasurer:	Rebecca Jackson	782590
Secretary:	George Flanders	781729
Organist:	Kath Mills	732194
Choir Leader:	Kath Mills	732194
Reader:	David Mills	732194
Youth Worker	Mark Capstick	015242 62982



Little Fishes

Little Fishes is an activity session for pre-school children (age 0-4). Sessions will typically have a bible-based story followed by a craft activity. It's free! Snacks for the tiddlers & tea and coffee for the parents/carers.

1st and 3rd Tuesday of each month, term-time only, times: 2.00 - 3.00pm St. James' Church, Burton. New fishes always welcome, why not come along and see what it's all about. For more info contact Jo Dugdale: 01524 781928.



St James' Junior Church

SUNDAY CLUB (ages 3 to 11)

Meets in Burton Memorial Hall most Sundays at 10am

YO-YO GROUP (ages 11 to 16)

Meets most Sundays at 10am

For more information call 782758

St. Mary's R.C. Church **Yealand Conyers**

Mass Times:

Sat 6.00 pm

Contact: Canon J Gibson

01524 732940

for further information

Warton Methodist Church

Borwick Lane, Warton

Sunday Service: **10.30am**

Whizz Kids :: Creche

(school-age children) (below school-age)

Church Tel: 01524 732626

Yealand Quakers

Yealand Meeting House

18 Yealand Road, Yealand Conyers

**Our normal Sunday Meetings for Worship
are held from 10.30 - 11.30am**

Visitors are always welcome

For more information call:
01524 781601 or 01524 782052
or 01524 732336

Holme Garden Services

Nick Scott Berry



HG Services now offers all aspects of gardening needs including grass cutting, general garden maintenance, design and planting, tidy/clearances.

For Fast Friendly quotes
Ring Nick **07766 395595** or
email nicholas.berry19@hotmail.com



Christmas Tree Festival

Saturday 10 December
10am – 3pm
Holy Trinity Church, Holme

Everyone is invited to come and browse the Christmas Trees that are on display in Church. Each tree reflects on part of the Christmas story and have all been decorated by a different community group.

Free refreshments served all day.



Fully Qualified Childcare Staff

**For Pre-School Children
Aged 3 months To 4 Years**

Open daily Monday to Friday 7.30am - 6pm

Mobile Childcare Services available
For weddings, christenings, parties etc

SPOTTED DOG CHILDREN'S CENTRE
CLAWTHORPE HALL BUSINESS CENTRE
Tel : 01524 784321

RECIPE CORNER...

Three easy bake salmon dishes I have collected over the years in my personal recipe book. One of my earliest childhood memories is of a walk from my grandfather's farm at Langwathby in the Eden valley, to watch the salmon leaping where the River Eamont flows into the River Eden at the salmon pool. The first recipe is adapted from my grandmother's handwritten recipe book - she used 1lb fresh salmon and 3 eggs!

Salmon Bake

*1/2 lb tin of red salmon
1 cup breadcrumbs
1 egg
1 cup milk
1 tablespoon butter
2 teaspoons chopped parsley
seasoning*

Break salmon finely with a fork into a mixing bowl, stir in breadcrumbs, beaten egg, milk and seasoning. Put into greased oven-proof dish, dot on small pieces of butter. Bake at 170C (160C in a fan oven) until set, approx 35-45 minutes.

Salmon Kedgeree

*3 oz long grain rice
1/2 lb tin red salmon
1 oz butter
1 tomato
2 oz grated cheese
1/4 pint cream whipped*

Cook rice in salted water for 15 minutes (will take longer if using brown rice.) Melt butter in a pan, mix in cooked rice, flaked salmon, season. Fold in the cream using a metal spoon. Place in oven-proof dish, sprinkle on cheese then add tomato halves. Heat through at 180C for 10 minutes.

Salmon Macaroni

*4 oz pasta shapes
1/2 oz butter
1 oz flour
1/2 pint milk
3 oz Cheddar cheese, grated
1/2 lb tin red salmon
1 tablespoon chopped parsley
pepper
1 oz wholemeal breadcrumbs
1 sliced tomato*

Cook pasta in boiling water (12 minutes or as directed on packet.) Make 1/2 pint white sauce with the butter, flour and milk. Stir in half of the cheese, the flaked salmon, pasta, parsley, pepper. Spoon into an oven-proof dish. Top with breadcrumbs, tomato slices and rest of cheese. Bake at 180C for 15 minutes.

All three recipes can be easily adjusted to cater for small or large families.

Barbara Rush



MICHAEL PLATT

PLUMBING and HEATING Ltd



CORGI N^o
36856

BATHROOMS SUPPLIED AND FITTED
NEW H.E. BOILER FITTED
RENEWABLE ENERGY PRODUCTS
SOLAR PANEL
AIR SOURCE HEAT PUMPS

DAY TIME 07850 472780

NIGHT TIME 01524 782390

WEB SITE www.mplattplumbing.co.uk

Jan's Pantry

Mobile Outside Catering for all Occasions
Barbecues • Weddings • Christenings • Parties etc.

A fully qualified cook at your fingertips

**For enquiries call
01524 781904 or
07855 202124**



***Your Celebration Cakes
can be done too***

Village People

... an occasional series

Jeff Pritchard

Jeff from Burton-in-Kendal is a motor mechanic who works with his dad, Stuart, at their family run garage S J & B Pritchard Auto Repairs at Gatebeck. Jeff is a well-known and respected motor racing driver. We featured Jeff in Burton News in June 2008 when he was racing on the Oval Racing Circuits "Oval Track Legends." In the "Oval Track Legends". The races take place on a ¼ mile track with banked corners. The car's suspension and steering had to be specially modified for the circuit. On the oval track, driving involved getting the car into third gear as soon as possible with a foot hard on the accelerator for the whole of the race.

In April 2010 Jeff graduated from the oval race track to full circuit racing on tracks ranging from 1.5 to 2.5 miles a lap. The cars are basically the same as the oval track cars, but have to have the suspension, steering and gear box restored to normal for the conventional circuit. All cars in the race have the same specifications – you can't buy success. Cars are capable of reaching 120 mph with a 0-60 mph in 2.9 seconds. Driving now involves 15 to 16 gear changes per lap, in a 10 lap race this would need 160 gear changes. In one race Jeff snapped his gear lever!

There are meetings each month from April to October with meetings held at Knock Hill at Dunfermline, Cadwell Park in Lincolnshire and Croft over in Yorkshire. Jeff has found the change challenging and is improving with each race. He said he has a lot to learn and needs to improve his lap time by one second



THE BAY BLIND COMPANY

PLEATED ROLLER ROMAN
VENETIAN VERTICAL
VELUX

Each blind is measured and manufactured individually, and fitted personally
Commercial and Domestic : Evenings and Weekends
David or Sandra
Phone/Fax 01524 781149 Mobile 07957 343071
2 Boon Town Burton Carnforth Lancs

Dave Rushworth

(formerly of Silverdale Computers)
Vicarage Close, Burton

**Computer Repair
Maintenance
Upgrade**

**Tel: 07765 954386
or 01524 782869**

email: dave@dezy.co.uk

to be in contact with fastest drivers.

Jeff has collected silver this year by coming 5th in the Inex qualifying race. The team consists of Jeff (driver) and Stuart (Dad) and a 12 year old helper Alex. You can keep up to date with Jeff by visiting his web site <http://pritchardmotorsport.tripod.com>. Jeff's primary sponsor for 2011 is J E Duckett Surfacing Ltd.

F.W.

Burton Market Cross

Readers may have picked up on the suggestion made, at the Parish Council meeting, to replace the missing top on the Market Cross in The Square. Kath Hayhurst has been searching for images to show what the top looked like, and the most recent photo she has found is dated 1968 and was taken by the late Bill Newsham. This shows what appears to be a square flat block atop the column, but the block has been missing for many years and it is a mystery as to where it went. Do you know what happened to it? If so Kath would love to hear from you on 781613. Likewise, if you have earlier or later photos of the Market Cross, with or without the block, Kath would welcome copies. Just for interest, Kath also supplied us with an extract from the 1801 newspaper where an advert for artists to design a new market cross for the village was posted. It read as follows:

"BURTON CROSS

Artists, willing to contract for building a NEW MARKET CROSS, at Burton in Kendal, are desired to produce Plans and Estimates, to a Committee at the Green-Dragon Inn, on WEDNESDAY the 30th of December,

1801, at eleven o'clock in the morning.

The plan is intended to be an half octagon, or semicircle; the diameter, at the base, twelve feet, the elevation three feet, with an appropriate column.

At the same meeting, the Old Cross is to be sold; and the materials removed at the purchasers expence, in one month from the date.

[This will be no more advertised]"

We also wondered what the original Market Cross might have looked like, but as it would have pre-dated photography we may never know!



Architectural & Building Surveying Services



PLANNING / BUILDING CONTROL APPLICATIONS
FOR EXTENSIONS, NEW HOUSES, COMMERCIAL
PROPERTIES INCLUDING ALTERATIONS &
REFURBISHMENT.

Stuart McMinn BSc HND ABEng

Tel / Fax 01524 781081 Mob. 07729 845147

Email stuartmcminn081@btinternet.com

www.houseplansdrawn.co.uk

DALTON self storage

- Indoor containerised storage
- Easy Access
- Well Lit
- Secure

Tel. 01524 782442

Burton-in-Kendal

THE MINING MYSTERIES OF WINTER HILL

The Winter Hill television transmitter is a familiar landmark in Lancashire and West Yorkshire, but long before the age of television another industry was in existence - coal mining.

Exactly when mining began on this bleak moorland hilltop remains a mystery, although in 1842 the Winter Hill Colliery was visited by representatives of the Children's Employment Commission, who found that eight adults and four children worked there. The inspectors' role was to examine the children's abilities in reading and writing and, in addition, whether they attended Sunday school and public worship; in essence the Commission investigated the impact of child labour on education and citizenship!



At the time of inspection, this particular colliery fared better than most, for while none could write, all the children could read and they all attended Sunday school and public worship. The report noted that, in the past two years, there had not been any accidents, and there was no evidence of 'fire damp' which was the cause of so many mining explosions. No problems here then!

The children worked as 'drawers', which meant pulling tubs of up to one hundredweight of coal out of the mine,

whose tunnels were a 'generous' three feet in height except for a length that reduced to just two feet! While it is unrecorded, they may have worked a six day week and up to 13 hours per day.

In 1838 it was the miners from this colliery who first helped George Henderson; he had been shot and mortally injured on the moors that November, on a day that was typical with dense mist swirling around the summit, making visibility difficult. Despite an arrest and subsequent trial, the murder still remains unsolved, although many believe that a hanging would have taken place had it not been for the brilliant defence by a young solicitor, John Taylor, who later became Bolton's first coroner.

The entrance to Wildersmoor Colliery was further down the hillside. It owed its existence to the fireclay that was used to produce pipes at John Crankshaw's factory, high above the town of Horwich where a housing estate now stands. It was at Wildersmoor Colliery that Roland Adamson was manager for 46 years until the mine's closure in 1961. A thin seam of coal lay above the fireclay and it was removed to feed the huge 'Lancashire boilers' that produced the heat for the kilns. Unfortunately any tiny coal fragments within the clay would ignite during the firing causing the pipe to break. For this reason it was imperative for the collier to sweep clean the area before the fireclay was extracted.

HALE GARAGE CO



(Practical Automobile Engineers)
Established over 70 years

Main A6 Road, Hale

New & Used Car Sales Service & Repairs

*Full Dealer Computerised Diagnostics Equipment
Petrol & Diesel MOT Testing. Body Repairs, Tyres*

Batteries, Exhausts & all your Motoring needs

Free collection or loan car service



015395 62173 / 62839

CHIROPODIST

HOME VISITS

Ian McCutcheon

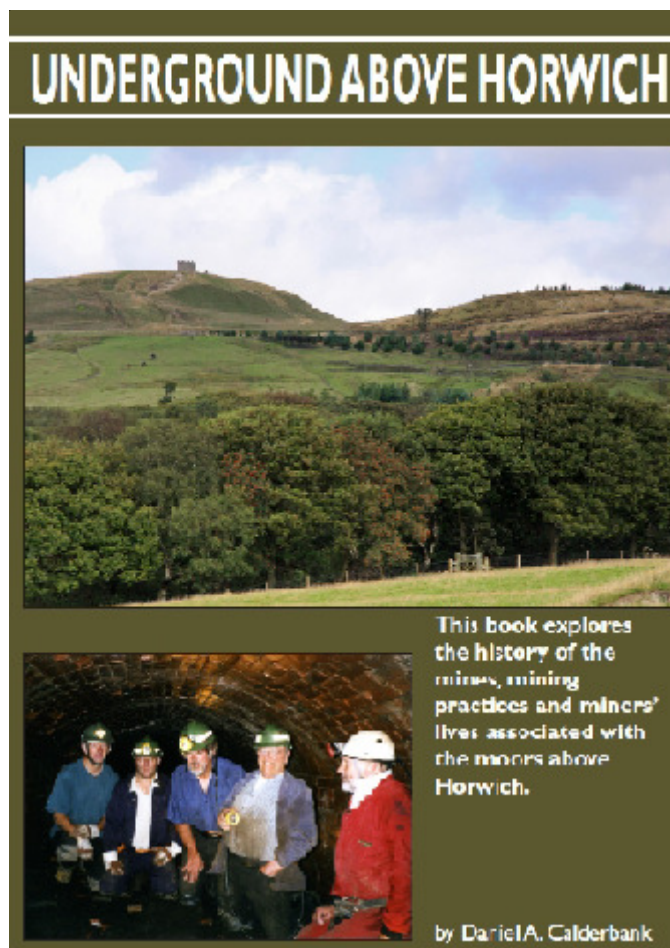
MSSCh, Dip. Pod. Med., MBChA

Tel. Burton 781383

There were other mines too, including one of the oldest at Montcliffe, and others at Prospect Farm, Ormston's Farm and Higher Meadow Farm. When the latter came up for sale in 1859 it was also advertised as having a bleachworks! Mountain Mine, Cabin Pit and others all have their histories, and in the book *Underground above Horwich* Danny Calderbank brings to life the mining operations on the slopes of Winter Hill and the people who worked there. Two heritage walks are also fully described, allowing ramblers to locate interesting sites mentioned in the book that may otherwise have remained hidden. These walks are both quieter, and arguably more picturesque, than those to be found in the neighbouring areas of Anglezarke and Rivington.

The book *Underground Above Horwich* is available from December 2011 and readers of *Burton News* can take advantage of a Special Offer price as well as having their copy signed and numbered. All profit will be donated to the *British Heart Foundation*. The Special Offer price is £4.95 and you can order a copy at Burton Post Office up to the end of December. Offer ends 31.12.2011.

Danny Calderbank



J C Derbyshire Ltd

**BUILDING CONTRACTORS
TRADITIONAL STONEMASONRY
SPECIALIST**

**15 ST JAMES DRIVE
BURTON-IN-KENDAL**

**TEL: 01524 784840
MOB: 07967 092465**

CUMBRIA WILDLIFE TRUST

**Conservation Work Party at
Park Wood Nature Reserve
Wednesday 14 December
10.30am - 3.30pm**

Help with ride maintenance to create a sunny corridor for butterflies enabling them to move through the woodland whilst maintaining access and a varied woodland edge for wildlife. The task will involve brash burning and coppicing of trees. Potatoes provided to cook in the ashes, hopefully we will get the bonfire going! Children welcome if accompanied by a parent or guardian at all times. Outdoor clothing, gloves and strong boots will be required. Bring a packed lunch and flask for tea. Booking is essential.

Location: Park Wood Nature Reserve, Hutton Roof. Meet at the road lay-by by Low House, Hutton Roof village. GR: SD 570 780
Contact: Andrew Walter on 01539 816300
email andreww@cumbriawildlifetrust.org.uk.

South Lakeland District & Cumbria County
Councillor R.K. Bingham
The Smithy, Ackenthwaite,
Milnthorpe, Cumbria, LA7 7DH
Tel: 015395 63694
e-mail: roger.bingham@cumbriacc.gov.uk

Roger Reports...

from the district & county councils

As we approach the New Year, plans for the county council's 2012-13 budget are coming to a head. The main aim is to meet the coalition government's ruling that all local authorities must continue to reduce expenditure in order to qualify for the Whitehall grant that will prevent the Council Tax from being raised above the level set in 2009. With inflation at about 5% and some costs, especially fuel, much higher this is not an easy task.

Following 666 staff cuts, and other economies, Cumbria has nearly achieved this year's savings target of £44m. But according to the Local Authority Resource Review we, as rural authority, suffer from disproportionately high transport costs. The Government has, however, reduced the penalty tax for authorities unable to meet the carbon reduction targets, so that Cumbria's 'fine' is down to £400,000 from £700,000. Having recently cut 19 rural bus services there could be more in future, though I am assured that Burton's 555 bus is safeguarded.

Charges for residents' parking permits are being

considered for the big towns, and it is suggested that the 10% Council Tax discount on second homes should be abolished, and even increased above the permanent residents' rate. What do you think?

We were told of some of the difficulties in achieving savings at Cumbria's Environmental Services working party. The county's waste budget is £800,000 above the national target though this compares well with other rural counties like Norfolk which is over-spent by £3m. But if Local Government Minister Eric Pickles' plans for weekly waste collections go ahead, costs could double and the land fill tax would increase, as the more collections there are, the more waste is collected.

One recycling change is that SLDC now says we can put envelopes and 'clean' kitchen foil in the blue boxes. Possible 'fleet saving' economies might be achieved by sharing services - so South Lakeland might collect for Lancaster in Carnforth - or Lancaster could collect for us. Incidentally, I have again been assured that South Lakeland residents can use the Lancashire recycling-waste services on Carnforth level.

One saving achieved for next year is a new highways surface dressing contract, which is 5% lower than Amey's, the previous contractors' costs. Hopefully we will get some of the minor roads resurfaced which were missed out in last year's programme, like the lanes on the mosses.

Also regarding the mosses, I have allocated £2,000 out of my councillors' grants allowance of £12,000

WHITESIDE AND KNOWLES

SOLICITORS, MORECAMBE

(EST. 1888)

Comprehensive range of legal services

Do you have power of attorney?

If not, you need to consider making one, as new powers need to be registered before they can be used.

CONTACT: TONY COLLINSON

TEL. 01524 416315

Email: arc@whiteside-knowles.co.uk

Station Garage Arnside



Vehicle servicing & repairs (all models)

Free local collection

Loan Car

MOT Checks

Tyres / Exhausts



Tel 01524 761398

towards the drainage costs of the Burton and Holme mosses. But in addition, the Inland Water Drainage Board is proposing a special precept on the council tax in parishes affected, with a rate of £7 per acre for land holders and, I think, £5 p.a. for domestic dwellings - but would this be fair to the vast majority of householders who live way above the flood plains?

Disagreements between other authorities and the Lake District National Park have recurred, with many county councillors objecting to LDNPA refusal of a Zip Wire tourist attraction in Honister quarries.

Another recent suggestion is that all of Mansergh parish, which is in our Lower Kentdale Division, should be included in the Yorkshire Dales National Park. As a member of the YDNPA, I am worried that the nearer the extra planning protection afforded by national park status gets to our immediate area, the greater will be the development pressure for e.g. wind farms near to Burton.

Amongst our good news are reports that South Lakeland is one of the most crime free areas, and that, thanks to our Fire and Rescue Service, fire deaths and injuries have halved.

Meanwhile, the extra salt and winter grit arrived in early November - so by BN's next issue in February we will know if all the assurances have worked.

Merry Christmas!

Roger

M
I
C
K



L
O
R
D

**HOLME BUILDING
SERVICES LTD**

All aspects of building work undertaken
No job too small, so call
Tel:- 01524 782472
Mobile:- 07977 093070
1, Oxlands, Holme, Lancs, LA6 1RG



W.I. NEWS

We had our annual meeting on Thursday 10 November at Burton Memorial Hall. We heard from our secretary and our President about all our events and meetings held during the past year. Mrs Doris Aldworth was our visiting WI Advisor who officiated for the election. Mrs Hester Willink is our President for a second year. Our committee had one new member, welcome to Margaret Carr we are very pleased to have you.

We had our Christmas Coffee Morning on Saturday 19 November with mulled wine and mince pies. Thursday 8 December is our next meeting, which is our Christmas Party.

Our new programme is ready and we start on Thursday 12 January with an illustrated talk by Mr Bill Willink, "Another little bit of Australia." As always we welcome visitors and new members to any of our meetings.

Happy Christmas and a good New Year from all the WI members of Burton in Kendal WI.

Contact Helen Nixon 781048 for more details.



D.A.BELL LTD

Plumbing & Heating Engineer
Gas, Oil & LPG Installation, Repair,
Servicing & Maintenance
Bathrooms Fitted & Tiling

Gas Safe Reg No 92436
OFTEC Reg No C3883

Tel: 01524 781973
Fax: 01524 781239
Mob: 07831 231492

Cumbria Community Messaging



What is it?

Cumbria Community Messaging offers you the means to receive information from Agencies in the County which suit your preferences for content, priority and means of communication. It is a free service and there are no contracts, costs or obligations of any kind.

Who's providing the information?

Currently the partners who will provide information are Cumbria County Council, Cumbria Fire and Rescue Service, Cumbria Constabulary, and the Cumbria Neighbourhood Watch Association. In time we hope to have other partners providing information you may like to see.

How do I get involved?

1. You can register online by going to www.cumbriacommunitymessaging.co.uk. Registration is quick, simple and completely free.
2. If you don't have access to the internet, a friend or a family member can register on your behalf.
3. Complete the form above and hand it in to your local police station or to a member of your neighbourhood policing team (your request will be passed to a police or Neighbourhood Watch volunteer for registration).
4. You can also post it to: CNWA, c/o White Stone, Newby, Penrith, Cumbria, CA10 3HQ

How can I receive messages?

You can elect to receive messages by email, text, or phone (voice mail). The preferred option is email as

there is no charge by the software licensor, keeping the costs of the system down and allowing a better quality of service. Members registered to receive only voice mail and/or text messages will still receive important information, but not all messages/warnings circulated on the system.

Can I change my mind?

Of course if you change your mind, you can unsubscribe at any time. It's your service, your call.

How about Data Protection?

Your personal details will be securely held under the provisions of the Data Protection Act and only the people you want to see your details can see them. They will never be shared with commercial organisations.

Why should I bother?

Two reasons; one, by registering on the system you can keep in touch with the things that concern you and your community and two, you can report information, for example regarding potential crime, anti-social behaviour or other incidents you think are relevant. And provide helpful feedback to the agencies supplying information. We would like you to be informed and involved.

Note: Your information will not be shared with anyone other than the web site administrators who have signed an information provider licence and have a nominated Data Controller registered with the Office of the Information Commissioner in compliance with the Data Protection Act 1998. The service is free and you can unsubscribe at any time.

Westmorland Marquee Hire

Corporate Weddings Private Parties

"when it has to be right"

Free and comprehensive site visit service
Competitive prices. Clean, smart, modern equipment

01524 – 782 414

www.westmorlandmarqueehire.co.uk

Dalton Hall, Burton-in-Kendal, LA6 1NJ
info@westmorlandmarqueehire.co.uk

Prices start from under £700 for a marquee complete
with flooring and lighting suitable for 60 guests

The Honey Tree Chinese Restaurant 293 Marine Road Central, Morecambe

Open 7 days a week for lunch
and evening meals

**Modern authentic Chinese cuisine
cooked fresh to order using
only fresh ingredients**

**CHINESE BANQUET & HAPPY HOUR
DELICIOUS DIM SUM MENU**

Tel: (01524) 423860 or 420944

DRU YOGA CLASSES

BURTON MEMORIAL HALL
TUESDAY 1.00 – 2.30pm
£5.00 per class

ENQUIRIES 015395 64145
Email lindagriffith98@aol.com

Kirkby Lonsdale Junior Netball Club

Are you a budding player? If so, then we would like to see you at our junior netball training!

Thursdays: 6.00—7.00pm

Queen Elizabeth School sports hall, Kirkby Lonsdale
Open to all players of all abilities between years 6-9
(please wear suitable clothing and trainers)

£10.00 membership fee for the full year

For more information contact:

Louise Dawson

01524 782277 or 0777 136 4708

Kirkby Lonsdale Netball Club

Queen Elizabeth School Sports Hall

Thursdays: 7.00—8.30pm

For fitness or fun, competitive and non-competitive players. All abilities welcome—come along and try the first few sessions for free!

For more information contact:

Hannelie Pearson: 07789441353

Lisa Longley: 07847174662



Telephone: 01524 782476
01539 722594

DAYLUM LTD

General Building, Plastering, Slating,
Ceramic Tiling

Partners:

M A Wilson, 19 Morewood Drive, Burton
J Swindlehurst, 9 Bowland Drive, Kendal



Callanetics Sessions

Burton Memorial Hall every Friday from 9.30 - 10.30am
and 9.45 - 10.45am (Callanetics two classes)

Holme Parish Hall every Thursday evening from 5.30
- 6.30pm (Callanetics) and 6.45 - 7.45pm (Zumba)
£5 per session

Contact Lesley Gaultier on 01253 868550 or 07749
756992 or email: l.gaultier@talktalk.net and website:
www.callaneticsblackpool.co.uk

TO LET

Deerslet Bungalow
2 bedrooms

For more information contact
Richard Lawson
on 01524 781576 or
0795 800 691



Burton Indoor Bowling Club

We meet each Wednesday afternoon 2 till 4. It's
good fun and exercise. Why not try it out?
Everyone welcome at Burton Memorial Hall.

LONGLANDS
Inn & Restaurant

RESTAURANT, BAR, ROOMS, COTTAGES, FUNCTIONS AND BUSINESS.

Live music every Monday night
and first Saturday each month.

Using local produce, our chef creates hearty meals based
on good country cooking with a modern twist.

Monday - Pizza and Pasta Night from £9.95 for two people

Friday - Steak Night from £9.95

01524 781256



What's On at the Heron Theatre Beetham

Fri 9 Dec 7.30pm - Film: The Social Network [15]
Admission £5 / Director: David Fincher
Cast: Jesse Eisenberg, Andrew Garfield & Justin Timberlake [120 mins]

This compulsively watchable film about the creation of the networking website 'Facebook' is brilliantly written by Aaron Sorkin who also wrote the addictive TV series 'The West Wing', and the dialogue is smart, witty and fast paced. Jesse Eisenberg is perfectly cast as Mark Zuckerberg, the borderline sociopath who was the driving force behind 'Facebook', and who almost accidentally became a billionaire. The film takes familiar ideas about trust, friendship, ambition, betrayal and greed into fascinating new areas of experience.

"One of the most intelligent, pertinent and arresting movies of the past couple of years" (Phillip French - The Observer)



Burton Pre-School

Burton Memorial Hall

Chair: Kate Arkwright

Pre-School Manager: Nicola Braithwaite

We take children from the age of 2 years including children who are entitled to the Education Grant (over 3 years)

Opening times

Mon	9am - 12 noon	Under 3s / Over 3s
Mon	12 noon - 3pm	Over 3s
Tues	9am - 12 noon	Under 3s / Over 3s
Weds	9am - 12 noon	Under 3s / Over 3s
Thurs	9am - 12 noon	Under 3s / Over 3s
Fri	9am - 12 noon	Under 3s / Over 3s
Fri	12 noon - 3pm	Over 3s

**For more information please phone
07917 870001**

*Fully qualified staff. Social Services registered.
 Members of the Pre-School Learning Alliance.
 OFSTED recommended.
 Registered charity 517138*



Fri 16 Dec 7.30pm

Drama: "Oh, Whistle..." [Nunkie Productions]

Admission - £10 / under 16s - £5

Over a century after their first publication, M. R. James's "Ghost Stories of an Antiquary" remain the most admired supernatural tales in the English language. The author himself performed them to friends at Christmas in King's College, Cambridge. Now R M Lloyd Parry brings two of the eeriest and most entertaining back to life - 'Oh, Whistle, and I'll Come to You, my Lad' considered by many to be his masterpiece and 'The Ash Tree' - spine chilling!

Book by telephone or in person when the Box Office is open from 10am to 1pm on Tuesdays and Fridays from 2 September 2 to 25 May and prior to performances.

Telephone 015395 64283 24 hour Answerphone

E-mail: boxoffice@theherontheatre.com

Web booking form: www.theherontheatre.com

Registered Charity No. 501134

Burton Playgroup (incorporated in Burton Pre-School)

Come along to a friendly playgroup on a Wednesday morning 9.30 - 11.30am from Birth to Pre-school age. We play, do crafts, sing and story time, and lots of other fun things. It's a chance for mums, dads and carers to get together and chat and your little ones to play. We also have a qualified member of our Pre-school staff in our session every week. Health visitor comes to the session the 1st Wednesday of each month. It would be great to meet some new mums and dads and carers, and of course your little ones!

£2.00 per child, 50p per extra sibling, under 6 months 50p, and your 1st visit is free.





Holme & District Photographic Society

December Meetings

- Fri 2 Members' Evening: Macro
Fri 9 L&CPU Colour Prints
Fri 16 Christmas Social. Raffle

January Meetings

- Fri 6 A Year at Leighton Moss
Speaker: David Poole. Raffle
Entries for Kudos Open Comp
Fri 20 Kudos Open Comp
Judge: Martyn Mackie
Fri 27 Members Evening - Portrait
Entries for Jim Nicholson AV Comp

**All meetings are held at Holme Parish Hall
commencing at 8pm unless otherwise stated**

Visitors welcome at all meetings



Burton-in-Kendal Art & Craft Society

**Still Life / Mixed Media
Day Workshop: Thuline de Cock
Saturday 28 January 10am-4pm**

Burton Memorial Hall
Reception Room

*Members only: £5
Please book on 01524 781984*



Age UK South Lakeland are an independent local charity providing information, advice and support for people in South Lakeland who are over 50 and their families and carers.

Ruth Taylor is the locally based Village Agent for Milnthorpe, Burton and Holme and can be contacted via the Age UK South Lakeland Helpline on 01539 728180.

She is available to help older people access information and services between 10.00am – 11.30am on Monday 5 December at Burton Memorial Hall, where information will also be available on how to keep yourself warm during the winter months.

Registered Charity Number 1141415



LOTTERY FUNDED



Holme & District Flower Club

**I can't believe it's...
Speaker: Linda Hardman
Monday 5 December
at 7.30pm**

Preston Patrick Memorial Hall
Visitors welcome: £4 session



Borwick & Priest Hutton Gardeners Club

**Annual General Meeting
followed by
Autumn & Winter Colour
in the Garden
Speaker: Ken Green**

**Tuesday 24 January at 7.30pm
Borwick & Priest Hutton Village Hall**



Holme & District Local History Society

Cumbrian Icehouses & the International Trade in Ice

Speaker: Dr R David

Monday 16 January at 7.30pm

Burton Memorial Hall

Visitors welcome: £2

<http://localhistory.burtonweb.org.uk>

**N.B. Recycling Facilities
at Burton Memorial Hall
are currently unavailable**



Burton W.I. meeting at **Burton Memorial Hall**

Thursday 8 December at 7.30pm
CHRISTMAS PARTY

Thursday 12 January at 7.30pm
Another Little Bit of Australia
Speaker: Bill Willink

New Members & Visitors Welcome!

Contact: Helena Nixon 781048



BURTON FELLWALKING SOCIETY

December Walks

Sunday 11 Dec - 1.00 pm

Mince Pie Walk - Local *

Leader: Clive Horsford

followed by Mince Pie Party Burton Memorial Hall

No Saturday walk No Wednesday walk

January Walks

Sunday 8 Jan - 12 noon

Farleton & Puddlemire 7 miles

Leader: Clive Horsford

Saturday 21 Jan - 9.30am

Coniston 8 miles

Leader: Mike Earl

Wednesday 25 Jan - 1.00 pm

Heaves & Holeslack *

Leader: Clive Horsford

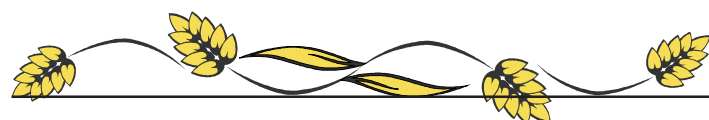
Friday 27 Jan

ANNUAL DINNER

Crooklands Hotel

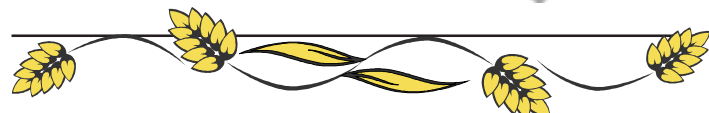
All walks: Meet in the Memorial Hall car park to
arrange lifts & share transport to the starting point.
(* less than 5 miles at a gentle pace *)

*Visitors £1.00 Membership £6 from Jan 1st yearly
More info from the secretary, Carole, on 782007
or visit our website: <http://fellwalkers.burtonweb.org.uk>*



REMINDER...

**Please make sure the birds
have food & fresh water
through the winter**



Linda Green



**Your Local
Mobile Hairdresser**

7 Tanpits Lane, Burton-in-Kendal

Tel: 01524 781811

Editorial...

Who pressed the 'pause' button?

Mallard ducks raising another brood, Greylag geese not moving as far south for the winter, and November set to be the warmest on record for 350 years... it looks like winter really is 'on hold'. Our only hope is that it's not a 'lull before a storm' and bad weather suddenly falls down onto us like the proverbial ton of bricks! We all could do with a bit of help with the fuel bills that a mild winter will bring.

Thank you to societies and groups...

Burton News has again received several donations from local societies and groups this year, as a thank you for us including their events in the News. So a big thank you to all those groups who have supported us this way, and all groups: please don't forget to send us your meeting calendars and extra event notices for the coming year so we can tell Burton for you.

Finally for 2011, a seasonal message from BN

As yet another year draws to a close we thank our team of distributors without whom Burton News could not drop through letter boxes. And, as ever, a huge thank you to Gill and Akis for once again being our collection point for copy and donations; and our fellow Editorial Committee members who assist us each month in all sorts of ways - we very much appreciate all your help and support with the News. A thank you too, to all the advertisers who help fund the News - without them we couldn't carry on, so please do use their services whenever you can.

We wish all the BN team the very best for Christmas and the New Year. Also to the villagers of Burton who have helped keep BN going all these years - a very merry and joyous seasonal wish to you all. Raise your glasses and say cheers to many more years of Burton News. Cheers!

AN & BJM



BN on Tape!



A reminder that Burton News can be obtained on audio tape for those with a visual impairment.

Please contact Judith Ellis on 781057 for further details.



For Sale

FOR SALE 3yrs-old 2-seater electric reclining settee. Colour Peru vanilla. As New. £400 (cost over £1,000). Telephone Les. on 07966 168 232.

Swap Shop or **For Sale** adverts are a max of 3 lines (must incl. a phone number).

Copy of advert should be put into a sealed envelope marked **BN Sales & Swaps** and left at the newsagents .

Annual Gift Subscriptions

If you know of anyone who may like to receive BN regularly each month, why not buy them an Annual Gift Subscription?

For £10 within the UK or £20 overseas they will receive a copy of BN each month (11 copies per year). A great way for family, friends and former residents to keep in touch with what's happening here in Burton. Anyone interested should contact BN at the address below.

BURTON NEWS

Please send us your letters - articles - events news - stories - recipes etc for publication

Drop them into The Newsagents, Main Street, Burton or send by e-mail to editor@burtonnews.org.uk

**NEXT MEETING 7.30pm
Tuesday 17 January in BMH**

**LAST DATE FOR COPY FOR NEXT ISSUE
20 January for the February issue**



Burton Art Group

Mondays 2:00 - 4:00 pm

Burton Memorial Hall
For more details tel. 782749

Circuit Training

Every Monday at 7.15 pm
BMH Main Hall

Every Friday at 6.15 pm
BMH Reception Room

Improve your Strength & Endurance
Cardio-Vascular System
Body Composition & Flexibility

For further info call John 01524 781707



~ **Burton Village Online** ~
www.burtonweb.org.uk
Your Virtual Community

Mobile Banking Service

Memorial Hall Car Park
Fridays

10.45am - 11.30am



Burton Tennis Club

Get fit and meet people. Any age and ability catered for. Join Burton Tennis Club. New membership open from 1 April. Competitions, local league teams. Coaching sessions and club nights and afternoons. Phone Phil Mann 782152 for details.

Burton Crown Green Bowling



We meet every Monday night from about 6.30 until 8.00 (ish) from about mid-March, and anyone wishing to try their hand will be more than welcome. More details from Malcolm Brownsord, Acting Chairman, tel: 01524 781405

County Library Van Times



The library van will be in the Memorial Hall car park every Monday between 10.00 - 11.00 a.m. Why not pop along and save yourself a trip to Kendal?

Library Coffee Morning

First Monday of Every Month
9.30 - 11.30am



Burton Memorial Hall



Cancer Care Cafe

Last Friday of every month
at Slynedales, Slyne Rd, Lancaster
(just over Beaumont Bridge)

Open for Tea and Coffee
10.00 am - 12 noon

Free Parking
Everybody Welcome!

Further details from 01524 381820

ART IN BURTON

Three art groups meet regularly in the Memorial Hall. If you are interested, why not contact the group leaders to find out more about each session?

Monday 2 pm - 4 pm Mary Newell, tel: 782749
Thursday 9.30 am - 12 noon Judith Ellis, tel: 781057
Friday 9.30 am - 12 noon Paula Firth, tel: 781984

LADIES BADMINTON

Ladies Badminton meets in the BMH every Tuesday from 1.30pm - 2.30pm. If anyone would like to join the group please ask for more details from Stephanie Micklethwaite on 781073.

S. Lakes Age Concern BURTON LUNCH CLUB (for over 55s)

The Burton Lunch Club meets every month in the Kings Arms, Burton. The club is open to anyone aged 55 or older. To join the club and book your lunch please contact Mrs Margaret Prady on 01524 781195.

COMMUNITY INFO

Community Transport

South Lakeland

If you need transport to hospital, doctor, dentist, optician, etc., please contact Mrs. Lynn Herd 01524 781905. If you could spare some time as a volunteer driver you would be most welcome.

Enquiries to above or 01539 742637

SURGERY TIMES

Dr JH Gorrigan

Monday 8.30am - 10.30am @ BMH

By appointment only. To make appointments please telephone 015395 63553

Child Health Clinic

1st Wednesday of each month

10.00 -11.00 am

No appointment necessary

Health Visitor: Shirley Bennett 015395 64887

OUT OF HOURS PHARMACY SERVICE

Ash Trees Pharmacy
Market Street, Carnforth

Monday to Friday 7am to 11pm

Saturday 8am to 6.30pm

Sunday 8am to 6pm

Tel: 01524 727877 - Fax: 01524 730421

Useful Phone Numbers

Burton News Editors	01524 781306
Burton Post Office	01524 781828
Burton Morewood School	01524 781627
Dallam School	015395 63224
QES, Kirkby Lonsdale	015242 71275
CrimeStoppers	0800 555 111
Police non-emergency	0845 33 00 247
Kendal Library	01539 713520
Kendal Hospital	01539 732288
Lancaster Hospital	01524 65944

Council Switchboards

Cumbria County Council	01539 773000
SLDC	01539 733333

Civil Registration Services

Births, Marriages, Deaths

Registration of Births and Deaths is overseen by the Kendal Registrar's Office, based in County Hall, Kendal. Telephone 01539 773566 or send an e-mail to kendal.registeroffice@cumbriacc.gov.uk

Registrations may also be undertaken at Milnthorpe and Kirkby Lonsdale Libraries by appointment only, contact the Kendal Office to arrange an appointment.

To arrange a marriage contact the Kendal Registrar.

SLDC Recycling Information



Andy Vickers

Customer Contact Centre

on 0845 050 4434

email: recycling@southlakeland.gov.uk

Cumbria County Council Highways Hotline

0845 609 6609

to report road or pavement problems

BURTON-IN-KENDAL

PARISH COUNCIL

**Meetings are 3rd Thursday of every month
7.30pm in the Memorial Hall**

Meetings:

Members of the public are always welcome to observe. Each meetings includes an OPEN FORUM where parishioners may raise matters of concern to them.

Planning applications:

Parishioners are asked to ensure they notify the PC as well as the planning authority of any comments or objections they have about any planning application within the parish.

Agendas & Minutes & Contact Details:

These are available on the PC notice board outside the Memorial Hall, on the PC website, or on request from the Parish Clerk.

Website:

Documents relating to the PC may be downloaded or read online here:

www.burton-in-kendal-pc.gov.uk



**FOR FURTHER INFORMATION, CONTACT
THE CLERK - Peter Smith on 782198**



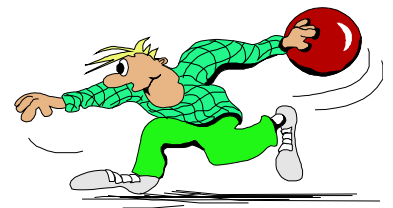
ADVANCE DIARY DATES



Christmas Lights Switch On, Thursday 1 December, Kings Arms Burton
BMH Christmas Bingo, Thursday 1 December doors open 6.30pm, BMH
BCSC Christmas Disco (secondary school age), Friday 2 December 8.00pm, BMH
St James' Church Christmas Coffee Morning, Saturday 3 December 10am-12noon, BMH
BCSC Childrens Christmas parties, Sunday 4 December, BMH
BMS Carols at the Kings, children singing carols, Thursday 8 December from 6.30pm, Kings Arms Burton
BMS Xmas Fair, Friday 9 December doors open 6.30pm, Burton Morewood School
Burton Tennis Club Christmas Bingo, Friday 9 December doors open 6.30pm, BMH
Burton Pre-school Christmas Fair, Saturday 10 December 10.00am - 11.30am, BMH
Aurora at the Kings for Neil's Birthday, Saturday 10 December from 9pm - late, Kings Arms Burton
BMS Children Carol Singing, Sunday 11 December 1.30pm-2.30pm, St Nicholas Arcade Lancaster
Tea with Father Christmas, Thursday 15 December from 4pm, Kings Arms Burton
Burton Thistle FC Christmas Bingo, Friday 16 December doors open 6.30pm, BMH
Christmas at the Kings, Saturday 24 December from 7pm, Kings Arms Burton
New Year at the Kings, Saturday 31 December from 7pm, Kings Arms Burton

Burns Night at the Kings, Wednesday 25 January, Kings Arms Burton
Quiz in aid of Guide Dogs, Thurs 26 January 8.30 pm start, The Smithy Inn Holme
BADS Murder Mystery Play Night & Hot Pot Supper, Friday 27 & Saturday 28 January 7.30pm, BMH

Burton Pre-school Retro Disco Night, Saturday 18 February 7.00pm - late, BMH



BMH = BURTON MEMORIAL HALL
BMS = Burton Morewood School

BCSC = Burton Children's Sports Committee
BADS = Burton Amateur Dramatic Society