

INSIDE

Letters
pg 2

Outdoors
pg 4

An Opinion
pg 6

Historical Footnote
pg 8

Sports Day
Results
pg 9

Church Updates
pg 10

Roger Reports
pg 14

Editorial
pg 25

Community Info
pg 27

Advance Diary
back page



2012 Olympics

Burton rooting for Alex Rutledge
& the Women's Water Polo Team

See page 3 for GB match dates & times

BURTON NEWS

THE VILLAGE NEWSLETTER

August 2012 Issue 217

Burton Fest



Saturday 1 September
Burton Memorial Hall
"8 till late"

'T-Bone', 'Hair of the Dog'
'Bad Taste Blues Band'
'Back from Beyond'

Tickets £6 (140 max)
Ian McCutcheon
or Paul Rossi



Readers' LETTERS



Dear BN,

Comments on Burton issues

Slope Lane - unfortunately it's getting worse and I should like to propose a solution that is infinitely better than all previous attempts. When branches have been lopped off professionally they are passed through an industrial shredder, this is perfect for the work in hand but it must be added in great quantity and sufficient to overcome the channel that has been created over the years. This does work but topping up will be needed from time to time. Perhaps this can be obtained free of charge from the council or tree fellers.

Christmas tree lights - apparently one person requested these and it has perhaps been assumed that everyone is in agreement. I am not. Burton remains largely untouched and I find that, after a day shopping, returning to the village throughout the Xmas period is wonderful. Do we not already have enough lights featuring in many gardens and windows?

Daffodils - I hate them, they remind me of so many roundabouts and numerous council planting schemes. Burton is a pretty, traditional village set in the countryside. Should we not endeavour to keep it that way?

Morris Evans, Burton-in-Kendal

Dear BN,

In a letter in July's BN, reference was made to the external condition of the church tower. Unfortunately, the actual condition of the 12th century tower is far more serious than that caused by a bush growing high up, regrettable though that is.

Those of you who have been in church recently will have noticed that large areas of plaster on the rear church wall have been removed. This has been done for safety reasons as water leaking into the tower had weakened the plaster. This water ingress has been a long standing issue, and over the years various unsuccessful attempts have been made to solve the problem. In an attempt to find a final solution, meetings have been held with English Heritage and the Carlisle Diocesan Advisory Committee for the Care of Churches.

As a result a full Architectural Survey of the Tower was commissioned, and the resulting report has just been received by the Parochial Church Council (P.C.C.). The basic conclusions are that, whilst at the present moment the tower is safe to use, significant remedial work to the parapet, overall pointing, external masonry, timber components and drains etc. is required. The overall cost of this work is estimated to be in the order of £250,000. At the moment the P.C.C. is examining the Architectural Report in detail, in order to decide on the best way forward.

George Flanders

P.C.C. Secretary, St. James, Burton-in-Kendal

See us online with colour photos!

Burton News Website

www.burtonnews.org.uk

Please would readers note that letters must include a valid name & address. This can be with-held from publication on request. We will not publish any anonymous letters, or material which, in the opinion of the Editorial Committee, is of an offensive or defamatory nature. BN reserves the right to edit letters & articles in the interests of magazine space.



**Dalton Hall
Business Centre
Burton-in-Kendal**

Meeting Room Hire

All Enquiries 07881 930139

offices@daltonhall.co.uk

<http://www.daltonhall.co.uk>

Thanks!

The class of Year 6 of Burton Morewood, and Virginia and Sonya would like to thank the school, and especially Mrs Woodburn, for allowing them to use the school premises for their leavers disco on Wednesday 18 July 2012. Thanks to Jane, Christine and Sandra for your help on the night. A special thank you to John Ainsworth for doing the disco, Jenni Mayor from Jennifer's Dancers for doing some street dancing, and Peter Davies for his work with the invitations and his photography work. The children were well-behaved and had great fun and a very memorable night.

Kate, Jorge and Ellie would like to say a massive thank you for all the donations and best wishes during Ellie's recent time in hospital. We raised over £700.00 on Saturday 14th on our Morecambe Bay Walk for the Children's Ward at Royal Lancaster Infirmary.

HAPPY BIRTHDAY!

28 August

Jayden Michael Green

Happy 1st Birthday to our precious little boy.

Lots of love from your proud Mummy and Daddy xx

POST OFFICE NEWS

Post during the London Olympics

There will be some limited changes to delivery times in London during the Olympics 23 July - 17 September. For details please ask at the Post Office counter.

London 2012 Olympic Games
27 July - 12 August

BURTON ATHLETE IN LONDON OLYMPICS

Women's Water Polo: GB matches

July 30: 18:20 Russian Federation

August 1: 19:40 USA

August 3: 18:20 Italy

August 5: Quarter Finals

August 7: Semi Finals

August 9: Finals



Alex Rutledge of TeamGB 2012

<http://www.teamgb.com/news/water-polo-athletes-added-team-gb-london-2012>

THE BAY BLIND COMPANY

PLEATED ROLLER ROMAN
VENETIAN VERTICAL
VELUX

Each blind is measured and manufactured individually, and fitted personally
Commercial and Domestic : Evenings and Weekends

David or Sandra

Phone/Fax 01524 781149 Mobile 07957 343071

2 Boon Town Burton Carnforth Lancs

physio-4u

Web: www.physio-4u.co.uk Email: info@physio-4u.co.uk

**Sports Injuries - Back Pain - Neck Pain - Arthritis
Joint Replacements - Injuries after Accidents
Rehabilitation after Surgery**

Professional, experienced, efficient and friendly

Clinics at Ashtrees Surgery and
The Lakeland Leisure Village

**Diane Lord - Chartered Physiotherapist
MSc Exercise and Rehabilitation**

Appt. or Advice 07947 727 533



Outdoors

It feels vacant now, on the right as you come into Burton from the south. Opposite Tarn Lane the air is empty. In that space our oldest oak was flourishing, until the gale on June 22 snapped it off at the base. Now it lies in the field corner like the corpse of an animal. Within the week it had been sawn into fifty or sixty logs - the main limbs, that is, some of them nine inches in diameter. The trunk still stretches out its massive, wrinkled torso. A few weeks ago a black-and-white cow from Richard Fawcett's herd stood in the field looking at me with its jaw resting on the bark, as though she liked its rough solidity.

The tree had always been to me the sign for Burton, as I drove in from Lancaster (often on the way to climb on the limestone crag that fronts Farleton Fell.) Lately it had been showing its age, as we say of people in their late '70s. Its upper limbs had died, and were leafless. With luck it might have lasted for many seasons yet. Of course it isn't 'luck', it's the savagery of the summer gale. The trees are at their top-heaviest with their full leafage, their wind-resistance is too great, and over they topple. I think it was in August 1984 that a gale tore through Buttermere and the lower slopes were littered with stricken trees: sycamore and ash and (if I remember) a few hollies - there are more large mature hollies on that ground than anywhere else I know of.

Burton's oak is a grim sight now. You can see the cross-section of a full-grown tree with indecent clarity. We're used to sawn cross-sections with their display of rings.

The base of the oak isn't like that. It's like a face crumpled and strained in all directions by conflicting feelings. It's pitted all over, as though gouged. It's mainly brown (sienna) and yellow (ochre), with a few strange pockets of tarry black. Some small stones have been pulled out of the ground as the tree broke and they stud the face along with patches of greyish soil. No roots whatsoever, unlike the beeches felled by the gale on January 7, 2005 on the Knott above Plain Quarry, which have those dragonish flares of root clenched onto plaques of cracked limestone. That has given the trees a little longer to live - some of them still leaf each year. Burton's oak has had no such reprieve. The gale has felled it as irreversibly as an executioner's axe.

It keeps happening, of course. Our major loss was the monumental elm, in what I think of as the sledging field, east above Morewood. It burned down one night early in October 1994. It had been hollow down one side for years. I loved to climb it up a 'ladder' of 6-inch nails that had been put in years before. The tree was a survivor from the hedgerow that once divided the field (still clinging on in the withered hawthorns further down.) First it was blighted by Dutch elm disease; then some of the lads (I suppose) fired it just for 'fun.' Not a trace of it is left on the pasture. Fifty yards east a giant ash, snapped off eight or nine feet above the ground, late last century, has left its own monument in the shards of trunk still sticking up like fangs. As big a tree was shattered by the same gale down Scape Lane and lengths of it still make the field look like an untended graveyard.

It's nice when the wood from these great and venerable sharers of our space on the Earth gets used, for

M
I
C
K

L
O
R
D



**HOLME BUILDING
SERVICES LTD**

All aspects of building work undertaken
No job too small, so call
Tel:- 01524 782472
Mobile:- 07977 093070
1, Oxlands, Holme, Lancs, LA6 1RG

HARRISON PITT ARCHITECTS
Architects & Code for Sustainable Homes Assessors

Housing : Commercial : Heritage
Education : Community : Leisure



29 Castle Hill
Lancaster
LA1 1YN
01524 32479
www.hparch.co.uk

RIBA 

Chartered Practice

furniture or boat-building or planks. After all, some of Burton's older houses have main beams made from oaken timbers reclaimed from ships wrecked or decommissioned along the shores of Morecambe Bay. No doubt rotting timber is just great for wood-boring insects, bracket fungi, and the like. Our forests have plenty of that. Surely the best of the ruined giants should be recycled into the human way of life.

David Craig

BURTON TENNIS CLUB

The club is holding an evening with Mollie Warburton and Band on Saturday 22 September at Burton Memorial Hall from 7.30 pm to 11.30 pm.

Tickets £5 available from the Village Store, Phil Mann (782152), or any other committee member. Also disco and bar.

Photo © Edward Ellis 2012



DIGITAL TV AERIAL AND SATELLITE FROM NBC-SKYNET

**tel 07710 400 499
or 015395 62561**

**LOCAL- PROFESSIONAL- RELIABLE
GET SET FOR DIGITAL !**



**Telephone: 01524 782476
01539 722594**

DAYLUM LTD

**General Building, Plastering, Slating,
Ceramic Tiling**

Partners:

**M A Wilson, 19 Morewood Drive, Burton
J Swindlehurst, 9 Bowland Drive, Kendal**



An Opinion...

Commenting on the goings-on at the Parish Council meetings

MOSTLY ABOUT ORIFICES

"Nursing is all about concern for the orifices of the body" was a quote from her nursing days which kept cropping up in An Opinion's head as yet another meeting of yet another Parish Council trod over the sniffy topic of dog poo. But it wasn't only dog poo. Oh no! It is not, it appears, only dogs that discharge their gunge onto the streets of the South Lakeland Dist. Council. "Public urination and defecation," as it is so delicately put by our council, has been an increasing problem too. The police are becoming bogged down in the restrictions of laws that might enable them to take more effective steps to deal with offenders. A new byelaw is requested, which would make possible a fine of up to £500 for the offence.

The timing of this action by S.L.D.C. is ill-judged and tactless. Wasn't it our very own S.L.D.C. that closed down most of our public toilets, despite very strong public protest? Of course not every yobbo is going to stagger to a public loo after a boozy night out (and the loos would usually be closed by that time anyway.) But closing loos to A.O.'s mind gives a signal: no one really cares whether you find a convenient shop doorway, and hygiene isn't any longer an issue.

Some brave groups have taken over responsibility for the loo(s) in their areas, e.g Kirkby Lonsdale. and Carnforth (O.K. that's not S.L.D.C.) But there's money

and jobs to be had from public toilets, putting it at the sort of level that S.L.D.C. might understand. A.O. has in mind the excellently run toilet at the Skipton car park, that is a source of employment, and hopefully, profitable.

P.Cllrs. agreed to support the introduction of the above byelaw, but they also (some of them) deplored the phasing-out of public toilets.

As for dog poo, there are green, all-purpose waste bins, A.O. can count three, where poobags can be left. A suggestion that the dedicated red poobins might be provided was scotched yet again. The red bins mean it's clinical waste (which it surely is) and it costs extra to get rid of. Oh. So how can neighbouring Holme afford bins and not Burton? These bins are in place throughout England and Wales. Are we the most destitute parish or what? To A.O.'s mind they tell dog owners that the area cares for itself and expects you, as a dog owner, to do the same. A suggestion that the P.C. should provide biodegradable poo bags for a trial period was of course dismissed. "Use nappy bags", was the advice from a P.Cllr. dog owner. "They're cheaper, and they smell nice." No they don't. They smell of cheap scent and you can't keep your spare ones in the kitchen unless you want it to smell of a brothel. "Take it home with you," was another smug bit of advice given by a P.Cllr. dog owner who lives outside the village. Keep a cat instead would be A.O.'s advice. They never poo in their own gardens, only in somebody else's, and their faeces are, in fact, more toxic than dogs', so why don't we go on about cats?

But other matters were discussed at the meeting too:

HALE GARAGE CO



(Practical Automobile Engineers)
Established over 70 years

Main A6 Road, Hale

New & Used Car Sales Service & Repairs

Full Dealer Computerised Diagnostics Equipment

Petrol & Diesel MOT Testing. Body Repairs, Tyres

Batteries, Exhausts & all your Motoring needs

Free collection or loan car service



015395 62173 / 62839

R.K.G.

**OVEN CLEANING
SERVICES**

Domestic Oven Cleaning Specialists

Ovens • Hobs • Cooker Hoods

Ranges • AGAs • BBQs • Microwaves

CALL RICHARD GOTT on

01524 782816 or 07939 015042

Police Report

Our C.P.S.O., Jessica Bullock, gave a report to inform that the offender who took the van from B.M.H. last month was now back behind bars. He had been on licence from prison, when it seems the temptation was just too much for him. He was apprehended in Kendal. Sadly the van was vandalised, though whether by the escapee himself or others was not clear to A.O. There were no other offences outstanding in Burton.

20 m.p.h. on Main Street.

Is there an outside chance? Variable 20 m.p.h. signs will be installed during the school holidays. And it was reported that there seemed to be a softening of attitude at C.C.C. about the possibility of a 20 m.p.h. speed limit on Main Street.

Daffodils

A P.Cllr. reported that she had been taking advice from a National Trust expert about the possibility of planting native daffodils in areas around Burton, and she passed on some interesting details and problems.

SLDC Collective Energy Proposal

This is a scheme by which S.L.D.C. will look for a supplier of electricity who will sell energy in bulk at lower cost. Residents can sign up to the scheme. Further details elsewhere in B.N.

Whew! Just in time to see the closing stages of the Golf Open. Lucky you if you were there in person!

A.S.



31 St James' Drive
Burton-in-Kendal
07879 681712
01524 781173

**Brickwork • Blockwork • Stonework
Groundworks • Drainage • Driveways
Heavy Landscaping • Extensions
Bespoke Stonework**

Burton Playgroup (incorporated in Burton Pre-School)

Come along to a friendly playgroup on a Wednesday morning 9.30 -11.30am from Birth to Pre-school age. We play, do crafts, sing and story time, and lots of other fun things. It's a chance for mums, dads and carers to get together and chat and your little ones to play. We also have a qualified member of our Pre-school staff in our session every week. Health visitor comes to the session the 1st Wednesday of each month. It would be great to meet some new mums and dads and carers, and of course your little ones!

£2.00 per child, 50p per extra sibling,
under 6 months 50p, and your 1st visit
is free.



Wine Tasting

**In aid of Burton Pre-School
Friday 28 September 7.30pm
Watersedge Restaurant, Borwick**

Tickets £15 to include Wines and Cheese and Nibbles
Available from Carrie Morphet 01524 781546,
Rebecca Ludlam 01524 782598 or the Watersedge
Restaurant.



Barton Tech Support For all your computer needs

Worried about viruses, hackers etc...?

**Fed up with slow computer due to
virus/malware scan or updates ?**

There's an alternative that isn't affected by these!
Ask me about **Ubuntu** and what it can do for you.

No risk trial

If you don't get on with **Ubuntu** I will remove it
and restore your system back to as it was F.O.C.

**Call Barry on 01524 781306
E-mail bts@yobunny.co.uk**

Historical Footnote by Roger Bingham

FARMER'S GLORY

Burton farmers played a prominent part in Britain's two agricultural revolutions. The first revolution of c.1750-1800 was characterised by the enclosure of waste land into compact fields, together with improvements in livestock and crops. In 1800 the Board of Agriculture reported that 'from Milnthorpe to Burton and Farleton to Kirkby Lonsdale large inclosures yield 45 bushels of wheat from 4 bushels of seed.'

The second agricultural revolution stimulated by the Second World War saw horses replaced by tractors, milking stools by milking machines and shorthorn cattle, which had held sway for 150 years, by Friesians. Before c.1750 Westmorland 'could not be commended either for plenty of corn or cattle with neither arable ground nor pasture.'

But in Burton pig production was a specialty with 80 being sold at Burton market in one day in 1752 - though they were criticised for having 'over big ears and misshapen snouts.' Sheep were 'scraggy like mountain goats'. A century later Mr Dobson's pure bred Leicesters from Coat Green, Dalton, 'swept the Board' at local shows, while Mr Dixon of Dalton Old Hall bred famous work horses, including a two year gelding *Loaf Sugar* which won at the Royal Show in 1879.

By this time Burton's centrality in agriculture had long been demonstrated by Burton Show, founded in 1833

which, after the County or 'Kendal Show' inaugurated in 1799, was (alas - no longer 'is') the oldest in the area. After amalgamation with Milnthorpe Show (first held in 1836) in 1857, and with the later addition of Carnforth Show, it rivalled Kendal Show. In 1950 it was acclaimed in the farming press as the 'best show of cattle in the north.' Fittingly, cattle champions included Messrs Dobson of Dalton and Bill Parsons of Overthwaite, Holme, who won with their shorthorns throughout the district. Soon, however, the top winners were high yielding - 'whitewash machines' - Friesians like Overthwaite's *Guilly Hill Shirley* in 1965. Other champions included *Farleton Bell* and *Homeland Envy* from Mr H.H. Bell's renowned herd at Holme Park, while Billy Duckett in 1960 and Tony Duckett in 1980 of Coat Green won the Atkinson Cup for the best managed farm at the County Show.

I wonder if Burton Show, last held in 2000 (the year before the Foot and Mouth epidemic), will ever return in order to exhibit our local farming glories.

Singing For The Fun Of It!

Do you enjoy singing, but don't get a chance? If you are interested in joining a new local group, starting in September, please call Val on 01524 781161 or 07799 246415 for details.



Goad Joinery Ltd

All aspects of joinery including:

Renovation, Doors, Windows, Sky Lights, Flooring
Extensions, Fitted Kitchens, Fencing
Barge Boards & Soffits, Garage Doors
Loft Conversions etc

Trusted Time-Served Joiner

Call for a free estimate, no obligation

Burton in Kendal 01524 782939

Dave Rushworth

(formerly of Silverdale Computers)
Vicarage Close, Burton

Computer Repair Maintenance Upgrade

**Tel: 07765 954386
or 01524 782869**

email: dave@dezy.co.uk

Burton Children's Family Fun Day Results!

Daniel Atkinson - 3 years and under boys
Agatha Freund - 3 years and under girls
Abe Rickhuss & Callum Gardner - share the 5 years &
under boys (contact 784874 to collect your Trophy)
Carys Dugdale & Kelly Armer - share the 5 years &
under girls
Jamie Looker - 6 to 8 years boys
Rachel Hartley - 6 to 8 years girls
Cameron Wickes - 9 to 10 years boys
Kate Wylder - 9 to 10 years girls
Matt Clarke - 11 to 12 years boys
Ellie Ducie - 11 to 12 years girls
Sam Steele - 13 to 15 years boys
Elizabeth Eddy - 13 to 15 years girls

Overall Winner Boys - Sam Steele
Overall Winner Girls - Ellie Ducie

The judge was overwhelmed by the standard of the floats, but finally came to the following decision:

Large Float - Glastonbury - St James Drive
Small Float - Fish & Chips - Hutton Close
Walking - Battle of Britain - Boon Town

Well done to everyone who took part, we hope you all enjoyed the day as much as we did. Look forward to seeing you all at the Onion Show, so get growing your veg!

D.A.BELL LTD

Plumbing & Heating Engineer
Gas, Oil & LPG Installation, Repair,
Servicing & Maintenance
Bathrooms Fitted & Tiling

Gas Safe Reg No 92436
OFTEC Reg No C3883

Tel: 01524 781973
Fax: 01524 781239
Mob: 07831 231492

Burton Morewood School

Burton Morewood School P.T.A. are holding an **Auction Of Promises** on **Friday 5 October** from **7.00pm till midnight** in the **Burton Memorial Hall**.

We are having a final push to raise the remaining money needed to replace both sets of old playground equipment.

We realise that this event is very close to the Onion Show, however we hope you understand the urgency of our cause and will support us regardless.

Tickets will be priced at £5.00 (from the School Office) and this will include entry and your first drink (wine, beer or soft drink).

Catalogues will be available on the night or upon request.

We would like to auction as many **Promises** as possible and therefore if you, your friends or your business (or contacts of any kind) could offer us something to auction, then your donations would be gratefully received and really will make a difference.

If you would like to donate a **Promise** then please ring the school.

Louise Barker



MO WITHAM
*Painting
Decorating*
Any Size of Job
Completed to YOUR
Satisfaction

PHONE: BURTON IN KENDAL
01524 781447

The Vicar Writes...

"Do a miracle and then I'll believe?"

"If Jesus would do a miracle today like the ones we read of in the Bible, then I'd believe in him." People have often said this or something similar to me during discussions about the existence of God and the truth of Christianity. I usually respond by saying, "But would you?" Let me try and explain.

Let's take an extraordinary miracle recorded for us in John's Gospel, chapter 11. There we see Jesus going to the tomb of Lazarus, a man who had been dead for 4 days and giving him back his life. He did this before a crowd of people (John 12:17.) That crowd of people and many others beside met Lazarus afterwards and were able to speak to him about what happened. Now, many people did put their faith in Jesus after witnessing this, but not everyone did.

Just a few verses later, speaking of the people in general, John writes, "Even after Jesus had done all these miraculous signs in their presence, they still would not believe in him." (John 12:37) Isn't that striking? Even after repeated and spectacularly public demonstrations of divine power – miracles that couldn't be explained away by his enemies – people still would not believe in Jesus.

Why? It wasn't because there was no evidence, but because they didn't like what the miracles showed them and what Jesus told them - that he is God and had come to save them. Many didn't want to submit to him as God. They wanted to live life their own way and, therefore,

they rejected him. So, if not everyone believed in Jesus after seeing his extraordinary miracles then, why do we think it would be any different today?

In fact, it is still the same today. There's plenty of evidence supporting Jesus' claims to be God - his teaching, miracles, life, death and resurrection - and that evidence is truly compelling. I've known lots of people who know that Christianity is true and who don't deny the evidence, but they still won't believe in Jesus and commit their life to him. The reason is this: they know that if they follow Christ there are things in their life they'll have to change. And there are some things they aren't prepared to change.

When it comes to the divinity of Jesus, most people reject it, not because of a lack of evidence, but because they simply don't want it to be true.

Paul



Little Fishes is an activity session for pre-school children (age 0-4). Sessions will typically have a bible-based story followed by a craft activity. It's free! Snacks for the tiddlers & tea and coffee for the parents/carers.

1st and 3rd Tuesday of each month, term-time only, times: 2.00 - 3.00pm St. James' Church, Burton. New fishes always welcome, why not come along and see what it's all about. For more info contact Jo Dugdale: 01524 781928.

From the Registers

8 July 2012

Baptism & Confirmation:
Laura Chaldecott, Robert Hunt

Confirmation:
Edward Anson



DALTON WOODLAND BURIAL GROUND

Natural Woodland Burial Ground

"Return to the Earth, naturally"

www.daltonwoodlandburial.co.uk

Burton-in-Kendal: 01524 782442

St James' Burton & Holy Trinity Holme

Sunday 5 August

11.00 Joint all-age service Holme

Sunday 12 August

8.00 Holy Communion (BCP) Burton

10.00 Joint all-age service Burton

Sunday 19 August

11.00 Joint all-age service Holme

Sunday 26 August

10.00Joint all-age service Burton

Prayer Requests

If you would like to request prayer for yourself or for anyone else, please contact Paul on 781391.

**If anyone will need a lift to either
Burton or Holme church
please contact either:
Janis (781241) or
Richard (015395 64239)**

ST JAMES & HOLY TRINITY CHURCH TELEPHONE NUMBERS

| | | |
|-------------------|-----------------|--------------|
| Vicar: | Paul Baxendale | 781391 |
| Wardens (Burton): | Michael Carr | 781283 |
| | Janis Wood | 781241 |
| | Trevor Wood | 781241 |
| Wardens (Holme): | Geoff Wragg | 781758 |
| | Richard Lea | 015395 64239 |
| Treasurer: | Rebecca Jackson | 782590 |
| Secretary: | George Flanders | 781729 |
| Organist: | Kath Mills | 732194 |
| Choir Leader: | Kath Mills | 732194 |
| Reader: | David Mills | 732194 |
| Youth Worker | Mark Capstick | 015242 62982 |

St. Mary's R.C. Church

Yealand Conyers

Mass Times:

Sat 6.00 pm

Contact: Canon J Gibson

01524 732940

for further information

Warton Methodist Church

Borwick Lane, Warton

**Sunday Service:
10.30am**

Whizz Kids :: Creche

(school-age children) (below school-age)

Church Tel: 01524 732626

Yealand Quakers

Yealand Meeting House

18 Yealand Road, Yealand Conyers

**Our normal Sunday Meetings for Worship
are held from 10.30 - 11.30am**

Visitors are always welcome

For more information call:

01524 781601 or 01524 782052

or 01524 732336

www.stjamesburton.org

St James' Church Online

St James' Junior Church

SUNDAY CLUB (ages 3 to 11)

Meets in Burton Memorial Hall most Sundays at 10am

YO-YO GROUP (ages 11 to 16)

Meets most Sundays at 10am

For more information call 782758

Power Up Your Community!

South Lakeland District Council's collective energy switching scheme

Fed up with high energy bills?

South Lakeland District Council is inviting residents to be part of a scheme that will give householders discounted energy costs.

Register for the scheme and you could save money on your home energy bills, and help other residents who are in fuel poverty and who struggle to pay energy bills.

Purchasing energy together is much cheaper

By grouping together with other residents your purchase power is increased, therefore discounts can be obtained by negotiating discounted rates with the energy companies.

How to be involved

Registration will be open for residents to sign up for the scheme from 1 August up to and including 17 September, 2012. An auction will take place on 18 September, 2012. This auction will allow energy companies to bid for the custom of those registered. Residents will not need to do anything at this stage.

From 25 September 2012 an offer with a price for energy supply, calculated based on the usage, will be sent to residents by email. Only then will residents

need to decide whether or not to accept the winning supplier's offer. By switching energy suppliers householders can often save a lot of money and switching has never been so easy thanks to the support and guidance of South Lakeland District Council.

Switching collectively is easy and safe

South Lakeland District Council negotiates on your behalf and ensures a safe and easy switch if you choose to accept the offer.

How does it work?

Residents can sign up from 1 August to take part in the scheme. Sign up is with no obligation and S.L.D.C. will inform residents of the outcome of the auction. Residents will be asked to give their annual usage from their gas and/or electricity bills when registering. In the week after the auction residents will receive a personal offer by e-mail and then will have a few weeks to decide whether or not to accept the offer.

How do we get a good deal?

The more people sign up, the greater our buying power. Energy suppliers compete to make the best offer in an auction. They decide their bid based on the number of people taking part. The supplier with the best tariffs wins the auction.

Can you register without a computer?

Yes. You can register by telephone on 0845 050 4434 or by calling into South Lakeland District Council offices

Station Garage Arnside



Vehicle servicing & repairs (all models)
Free local collection
Loan Car
MOT Checks
Tyres / Exhausts



Tel 01524 761398

WHITESIDE AND KNOWLES

SOLICITORS, MORECAMBE
(EST. 1888)

Comprehensive range of legal services

Do you have power of attorney?

If not, you need to consider making one, as new powers need to be registered before they can be used.

CONTACT: TONY COLLINSON

TEL. 01524 416315

Email: arc@whiteside-knowles.co.uk

in Kendal, Windermere or Ulverston. Residents will need their energy bill details with them in order to be given a more accurate quote following the auction. Once registered and the auction has taken place S.L.D.C. will contact residents to inform them of their offer.

Can you resister from outside South Lakeland?

Yes. Registrations will be accepted from anywhere inside or outside South Lakeland.

Further details can be found from 1 August at www.southlakeland.gov.uk, by calling South Lakeland District Council's Contact Centre on 0845 050 4434, or calling into one of our offices at Kendal, Windermere or Ulverston.

Announcements...

If you are in the Sixth Form or at College or University or will be starting a course of study in September/October 2012 – you may be eligible for a small grant from the **Burton-in-Kendal Educational Foundation**.

Small grants are available to Sixth Form and Further Education Students living and educated for at least 2 years in the Parishes of Burton, Holme, Preston Patrick and Holmescales, Beetham, Storth, Arnside, Ulpha, Witherslack and Meathop, Cumbria.

Further details and application forms from
The Clerk, Liz Falkingham
Tel. 01524 782302
e-mail: liz.falk21@tiscali.co.uk

Elmsfield Mowers

Unit 4B
Holme Mills Industrial Estate
Holme, LA6 1RD

Mowers - Strimmers - Hedgetrimmers - Chainsaws
Serviced - Repaired - Sharpened

Ring Eddie
Tel / Fax : 01524 784747
Mobile : 07785 521635

Moth Evening



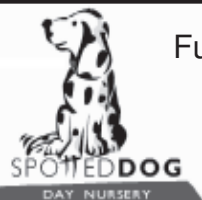
Rob Petley-Jones of Natural England will be conducting a 'Moth Evening' in the Holme Park Quarry Local Nature Reserve on Friday 3 August. Please meet at the entrance to the Nature Reserve on Clawthorpe lane at 9.30pm and don't wear insect repellent! All welcome please ring 782198 for information.

CraftMarket 2012 **in aid of Burton Memorial Hall**

CraftMarket 2012 still has a few spaces for anyone who would like to come along and sell their crafts. The criteria is that they must be made by you not bought-in, and the spaces are large hall table size. The cost is £12.50 per table per day, or £20 for a table on both days (saving you £5 and us having to tweak the layout!)

So far we have ceramics, glass, rag rugs, knitted items, cards, jewellery, woodturning, fabric crafts, canalware, beeswax candles, chalkboards, vac covers, and doorhuggers (what??? you'll have to come along and see!) .

Dates are Sat 29 and Sun 30 September, 10am - 4pm, and refreshments will be available both days. Anyone wanting space should ring Anne on 781306 for a booking form.



Fully Qualified Childcare Staff

For Pre-School Children
Aged 3 months To 4 Years

Open daily Monday to Friday 7.30am - 6pm

Mobile Childcare Services available
For weddings, christenings, parties etc

SPOTTED DOG CHILDREN'S CENTRE
CLAWTHORPE HALL BUSINESS CENTRE
Tel : 01524 784321

South Lakeland District & Cumbria County
Councillor R.K. Bingham
The Smithy, Ackenthwaite,
Milnthorpe, Cumbria, LA7 7DH
Tel: 015395 63694
e-mail: roger.bingham@cumbriacc.gov.uk

Roger Reports...

from the district & county councils

"What have you done to the weather?" has been my most challenging enquiry during the monsoons - leading me to plead for our councils to provide sandbags in the villages, like we do with winter grit. It just is not good enough for S.L.D.C. to expect us to drive ten miles through the flooded roads to collect them from Canal Head in Kendal. Also I am checking the accuracy of a council statement on Radio Cumbria that "all" gullies are cleaned twice a year. Having regularly surfed round during the deluges I know of many bad spots - but please let me know of those which might require major works like the new culverts outside The Creamery. S.L.D.C.'s contact number for Flooding Enquiries is 0845 050 4434.

In addition to the new warning lights by Morewood School, I am investigating ways in which we might have a '20 is Plenty' speed limit on Main Street. In the past my, and the parish council's, requests for 20 m.p.h. limits have been rejected because it is an 'A' road, it would require more road calming (sleeping policemen?), would be unenforceable and because "the accident rate is low" - daily near misses are not considered. But in Scotland I have noticed that there

is invariably a 20 m.p.h. zone on main roads outside schools. Please let me know what you think.

On Highways I have again been able to give £1,000 from my special councillor's allowance towards our parish lengthsman. I have also granted, (subject to the area committee's approval) £2,000 towards improving the Boon Town play ground. Also our Young Persons' committee has made available £2,500 for apprenticeships in South Lakeland. Members of the Youth Council are looking at ideas to involve young people in upgrading facilities and also to publicize the A2B NOW cards which provide cheaper bus fares for youngsters. But having again enjoyed our splendid Boys' Brigade displays and seen so many local pupils get awards at Q.E.S. Summer Prize Givings, Burton's youth deserves to be congratulated.

I have also been much involved with older persons' needs. I was privileged to open the senior citizens all day Jubilee event in the Memorial Hall and, on the previous day, to open the Jubiloo for our playgroup infants. As the county's Older Person's Champion I am serving on the Safeguarding Adults Task and Finish Group. About 65% of adults suffering harm or neglect are over 65. In South Lakeland in 2011 there were 157 "alerts" compared to 370 in Carlisle, which has about the same population. The disparity could be partly due to a measure of urban "deprivation" or that with a denser population incidents are more easily noticed and reported compared to areas of "sparsity and rurality." In our area there have been cases where older people have been overcharged by "cowboy" trades-people, abused by carers or cheated out of their

Architectural & Building Surveying Services



**PLANNING / BUILDING CONTROL APPLICATIONS
FOR EXTENSIONS, NEW HOUSES, COMMERCIAL
PROPERTIES INCLUDING ALTERATIONS &
REFURBISHMENT.**

Stuart McMinn BSc HND ABEng
Tel / Fax 01524 781081 Mob. 07729 845147
Email stuartmcminn081@btinternet.com
www.houseplansdrawn.co.uk

Pure Essence

Look after number one!
And let the number one look after you!

Please call in for offers and Spa days
or follow us on FB

For more information please call
Sue on 01524 735240

pure
essence

South Lakeland Leisure Village, Dock Acres, Carnforth
LA6 1BH (next door to Waters Edge Restaurant)

savings. For information about "protection" in the case of mental frailty or managing finances please contact Age UK 0845 169 6565 / www.ageuk.org.uk. I am also concerned about younger adults with learning or social difficulties, and immigrants unfamiliar with our laws and language, who might be exploited by employers. Hopefully, as we belong, I think, to a caring community we should be able to help everyone in need.

Best wishes

Roger

WHEN JOURNEY'S END APPROACHES

When journey's end approaches near
And words come slowly and less clear
Then weariness besets the mind,
With inspirations less inclined.
Lay out paper, pen and ink,
Provide a space with food and drink,
Invite around the favoured few,
Let joy and laughter now ensue
And then perhaps when night lights burn
Desire and talent will return.

Donald K Armitage

Poetry Corner



Jan's Pantry

Mobile Outside Catering for all Occasions
Barbecues • Weddings • Christenings • Parties etc.

A fully qualified cook at your fingertips

**For enquiries call
01524 781904 or
07855 202124**



*Your Celebration Cakes
can be done too*



W.I. NEWS

In addition to our June Jubilee cake at our monthly meeting, about nine members of Burton W.I. enjoyed a walk over Farleton Knott on the evening of Tuesday 12 June and celebrated on the top with a very small sip of rose wine and Jubilee chocolate teacakes.

Members of Burton W.I. enjoyed a delicious Diamond Jubilee Afternoon Tea at Cafe Ambio at Lakeland Motor Museum. It was a lovely sunny afternoon and a delightful spot on the bank of the River Leven (where the old Dolly Blue Works used to be.)

In July we enjoyed our Summer Supper and Auction. Members contributing delicious 'eats' followed by a highly amusing auction, conducted by Julia and Ann, armed with their wooden spoon gavel, and we had fun bidding against each other for items as diverse as a tin of beans, a pound of fresh blackcurrants, hand-painted pictures, lots of creams and potions, and a brand new pair of summer sandals. We were pleased to raise over £90 towards funds.

There is no W.I. Meeting in August but we are having an evening meal at the Kings Arms at Hale on Thursday 9 August. Visitors and new members are welcome. Please contact Helena Nixon on 01524 781048 for more information about becoming a member.

Advance Diary Dates:

W.I. Charity Mince Pie and Coffee Morning,
Sat 17 November, Burton Memorial Hall

Unique **handmade** jewellery and rings in precious and semi-precious materials

We create **jewellery** exclusively for you, and to your budget.
Gifts for him and her.

See our fabulous range of **Christmas** gifts.
Gift vouchers available.

Visit our studio at Greenlands Farm,
Tewitfield or call us on 01524 784187
email: info@macmillan-clare.co.uk

Macmillan-Clare

DESIGNER GOLDSMITHS



www.macmillan-clare.co.uk



Burton Fest

The first Burton-in-Kendal Mini-Music Festival

(Glastonbury's loss is Burton's gain
as we step into the breach!)

When: Saturday 1 September

Where: Burton Memorial Hall

8:00pm till late

Doors open 7:30pm

Four Bands! (To suit all tastes)
Affordable Bar! (Beers & Wines)

Ticket only event: £6 each, available from
Ian 01524 781384 or Paul 01524 782536

Mo's Musical Children

They say that old rockers never die, and that's certainly true of the erstwhile members of the *Burton Allstars*, long disbanded but not forgotten. Of those lucky enough to go, who could ever forget their amazing gig in Manchester (via the Trafford Centre car park when the coach got stuck!) or those fabulous nights in the Memorial Hall where they literally shook the walls and the Hall was full to bursting?

Paul and Barbara Rossie shared a table with us at the first Allstars gig in the Hall and it was Paul who said, on that night, "I could do that!", to which our response was, "Well go on then, join them!" So we were delighted when Paul told us about the Burton Music Festival (Burton Fest) which he and a group of fellow musicians were planning for Saturday 1 September, again in the Memorial Hall. "It will be," he told us, "like Glastonbury without the mud!"

Chatting to Paul and band-mate Ian "Cutch" McCutcheon over a cup of Barbara's excellent coffee in their conservatory, we asked how the idea had come to them. Music, it seems, has always been a big part of Paul's life - even as a teenager he played drums with a Manchester band called *Mike Fain and the Misfits*. He sang often with the *Allstars* until their disbandment, and currently plays drums in *T-Bone* along with Cutch, and fellow *Allstar* and *Aurora* man Dave "The Prof" Allsop, and a bass guitarist called Sam Fittes.

Burton Pre-School

Burton Memorial Hall

Chair: Kate Arkwright

Pre-School Manager: Nicola Braithwaite



We take children from the age of 2 years including children who are entitled to the Education Grant (over 3 years)

Opening times

| | | |
|-------|---------------|--------------------|
| Mon | 9am - 12 noon | Under 3s / Over 3s |
| Mon | 12 noon - 3pm | Over 3s |
| Tues | 9am - 12 noon | Under 3s / Over 3s |
| Weds | 9am - 12 noon | Under 3s / Over 3s |
| Thurs | 9am - 12 noon | Under 3s / Over 3s |
| Thurs | 12 noon - 3pm | Under 3s / Over 3s |
| Fri | 9am - 12 noon | Under 3s / Over 3s |
| Fri | 12 noon - 3pm | Over 3s |

**For more information please phone
07917 870001**

*Fully qualified staff. Social Services registered.
Members of the Pre-School Learning Alliance.
OFSTED recommended.
Registered charity 517138*



ORCHARD

financial planning

Independent Financial Advisers

015395 67129

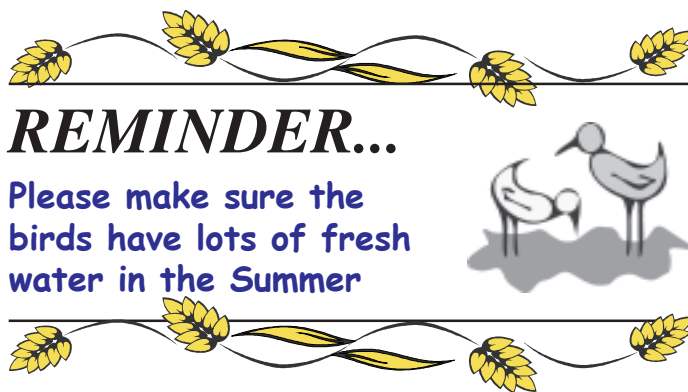
www.orchardfp.co.uk

Paul and Cutch describe themselves as Mo's Musical Children, in recognition of the guidance and encouragement given to them and all of the *Allstars* by Mo Witham and his wife, Kelly, both of whom have been professional musicians for many years, and who have worked with many of the top names in the music business.

Talking to Paul and Ian on how the Burton Fest idea germinated, the subject of their band name came up. *T-Bone* isn't something that most of us would connect with music, but Paul explained it comes from an old Blues singer called T-Bone Walker, of whom Paul is a great fan. Mr Walker's real name was Aaron Thibeaux Walker, which doesn't exactly trip off the tongue, hence the need for a stage name, and it's easy to see how Thibeaux would become T-Bone.

So now we say hello to the first Burton Fest on the evening of Saturday 1 September. The lineup is four bands, who between them play a wide range of music, so there should be something to suit all tastes. Paul told us that T-Bone has been going for less than a year, and they are very much looking forward to the Burton Fest. "Nervous?" I asked. They smiled non-committally: although they are all talented and experienced performers, those butterflies before a gig are quite normal, we're told! Cutch plays saxophone and harmonica, as well as providing lead vocals, Dave plays guitar, Sam on bass on Paul does drums and vocals.

T-Bone will be joined by Kirkby Lonsdale band *Hair of the Dog*, Dave Sapsford's *Back From Beyond* also from



Kirkby Lonsdale, and the *Bad Taste Blues Band* who hail from Ingleton. These four bands promise to get the first Burton Fest off to a cracking start with a heady mix of Jazz, Blues, dance tunes and everything inbetween.

Tickets cost just £6 each and are on sale now from each of the band members, or give Ian (01524 781384) or Paul (01524 782536) a call. There will be a wine and beer bar all evening, and doors open 7.30pm. You can sit and listen or get up and dance, or both!

"So is this to be an annual event?" we asked. We were answered by huge grins from Paul and Ian... "Wait and see," was the response. "If it goes well this year, we have some great ideas for next year!"

I have to say that we're delighted as we love live music, and for us there's been much too little of it since the demise of *Allstars*, so let's hope that the Burton Fest is a success and we can look forward to hearing lots of great live music in the village in the future.

Holme Garden Services

Nick Scott Berry



HG Services now offers all aspects of gardening needs including grass cutting, general garden maintenance, design and planting, tidy/clearances.

For Fast Friendly quotes
Ring Nick **07766 395595** or
email nicholas.berry19@hotmail.com

freedom
DRIVING SCHOOL

Pass first time

or receive free lessons until you pass

Call Richard on 01524 781704

www.freedomdrivingschool.biz

ONE CALL SERVICE FOR THE BEREAVED

A one call service has been set up to ease the stress on people who have lost loved ones.

The service enables a one call approach to notify the relevant authorities of a death. Set up as a joint service between South Lakeland District Council, Cumbria County Council and Lancashire County Council, the service allows members of the public to visit South Lakeland District Council offices in Kendal, Ulverston or Windermere, who will pass on the relevant information to government departments such as the D.V.L.A., the Passport Service, D.W.P. and others.

When a death is registered the Registrar will issue a unique reference number. The customer can then either telephone the S.L.D.C. Customer Contact Centre on 0845 050 4434 or visit the S.L.D.C. offices to pass on the details which will save them having to notify all the separate agencies at a time which is very difficult for them.

Speaking about the new service's launch late last year, Councillor Graham Vincent, portfolio holder for Policy, Performance & Resources said, "Dealing with the loss of a loved one is difficult enough without having to deal with a lot of bureaucracy as well. This new service saves people having to call different government departments and council offices to give them all the same information at a time that can be especially distressing. It is a very good example of how joined up working can really help people in the community."



GEC Cleaning Services Ltd
Estab. 1996

The personal, professional
cleaning service for your
carpets, upholstery - and
much, much more!

A FREE bottle of our own brand carpet spot
remover given with every quotation - our
quotations too are free and without obligation

Call Gary on 01524 782857
&/or visit www.geccleaningservices.com

Burton 10k & Fun Run

Sunday 9 September

10k starts 11am,

3.5k Fun Run starts 11:15am.

Registration from 9.30 at

Burton Morewood School

If you would like to take part in the run, please contact either Iain Hunter on 07717 108977, Sarah Hunter on 07769 824796, or 01524 781028.

If you would like to run a stall on the day for your charity, please contact the above numbers. There is no charge for this service.

If you would like to help out on the day, provide sponsorship, or donate prizes please contact the numbers above.

With thanks to our main sponsors, Aggregate Industries who have continued to support us for many years. To the Kings Arms who are sponsoring the race and providing a BBQ. To Moto Services, Burton Newsagents & Post Office, Pete Bland Sports, Pure Essence, Dalton Woodland Burial Ground, Michael Platt Plumbing & Heating Ltd., Arkwright Joinery, Wylder and Still Outside Catering, Mossdale Services A6, J. E. Duckett surfacing Ltd., Orchard Financial Planning, Edward Duckett & Son, Longlands Hotel, Square House B & B, Macmillan-Clare Goldsmiths, Mirror Mirror, Howard Boothman Property & Building Maintenance, Logs Direct, and the Woodcrest Garden Centre Greenlands.



Linda Green



**Your Local
Mobile Hairdresser**

7 Tanpits Lane, Burton-in-Kendal

Tel: 01524 781811

WRITERS' WORKSHOP

Autumn Writing Workshops

Following on from their successful workshop in July, 2QT Ltd. have arranged a further series of workshops aimed at new writers. These will cover two different styles of workshops; one focuses specifically on skills and technique whilst the other concentrates on different genres. All workshops will feature a guest speaker and a published author, who will be on hand to give tips and share their experiences, and they will all take place at The Stable Yard at Dalton Hall.

- 1 Sept How to write a book
- 22 Sept An Introduction to Children's story writing
- 6 Oct Characterisation and plot development
- 18 Oct 'The Business of Blogging' with leading travel blogger Zoe Dawes, aka 'The Quirky Traveller'.
- 10 Nov Preparing your manuscript
- 24 Nov An Introduction to crime/ thriller writing
- 1 Dec Getting published
- 5 Dec An introduction to memoir writing

Workshops cost £55 for a half day session (apart from the Business of Blogging which is a full day for £135) and include light refreshments. Bookings made before the 19 August will receive a discount of £10 off the cost.

The Stable Yard, Dalton Hall, Burton, LA6 1NJ
To book email carol@2qt.co.uk or call 01524 782244

DALTON self storage

- Indoor containerised storage
- Easy Access
- Well Lit
- Secure

Tel. 01524 782442
Burton-in-Kendal

Burton Village Store & Post Office

Opening Hours

| | Shop | P.O. |
|-----------------|--------------|---------------|
| Monday – Friday | 6am – 6pm | 9am – 5.30pm |
| Saturday | 6am – 6pm | 9am – 12.30pm |
| Sunday | 7am – 12noon | Closed |

We now stock items from more Local Suppliers

Burrows – Bacon, Sausages, Burgers & Lamb "Henry"
(Other items by request)

Dew-lay – Cheeses

Diggles – Cooked Meats

Greenhalgh's – Pies, Bread, Cream cakes

James Baxter's – Potted Shrimps & Dressed Crab

Kendal Jacksmith's – Flapjacks

Sue Prickett – Marmalade & Chutneys

Wylder & Still – Quiches, Scotch Eggs & Cakes

Fresh Vegetables Daily

(orders taken - please enquire)

And our Greek specialities

Award winning Greek Olive Oil

Other Greek Products: Balsamic Vinegar, Dolmades
Greek Yoghurt, Gigantes, Houmous, Olives, Tapanade



01524 781828



Barbara and Jack's Open House in aid of the NSPCC, to be held at Woodside, Clawthorpe will take place on Sunday 23 September, 12 noon - 4.00pm. More details in next issue.

~ **Burton Village Online** ~
www.burtonweb.org.uk
Your Virtual Community

COLIN HARPER BUILDING SERVICES

- * alterations
- * extensions
- * plastering
- * roofing
- * patios
- * stonework
- * drainage
- * tiling

Quality work at competitive prices
Free estimates

Tel: 01524 781194
Mobile: 07880 925170
39 Trinity Drive, Holme, Carnforth, LA6 1QL



News from Cumbria Police...

Over the May to June period reports of metal thefts and fuel thefts have continued in the South Cumbria area. We urge members of the community to report any suspicious vehicles or persons to Police on 101. For crime prevention advice in relation to these types of thefts, please don't hesitate to get in touch.

In the Holme and Burton area, three thefts occurred; a theft of a bicycle, theft of power tools and theft of a vehicle. The vehicle was located and the suspect subsequently arrested. Enquiries are ongoing. Again, please take steps to make your property as unappealing to criminals as possible. Criminal damage to a vehicle as well as an assault was also reported.

We regularly receive reports of scam phone calls in this area, please get in touch should you wish to discuss crime prevention advice and we will happily come and see you. The people making these calls can be very manipulative; don't be afraid to say NO!

Cold callers have been reported again in the area as a whole, we remind members of the community to be vigilant and report any suspicious incidents/people/vehicles to Police on 101 or to Trading Standards.

Pro active reporting of suspicious vehicles/persons from members of the community has assisted us with a lot of enquiries; we thank you for this and ask that you continue to do this by ringing Cumbria Police on the non-emergency number 101 (any time day or

night.) In an emergency always dial 999. Remember you live in a safe area, it is important we work together to keep it that way.

If you would like to join Cumbria Community Messaging then please contact us or visit the website at www.cumbriacommunitymessaging.co.uk. It is managed by the Cumbria Neighbourhood Watch Association and offers you and other members of communities across Cumbria the means to receive crime information from Cumbria Police. You can select

which information you wish to receive by managing your own settings, and it is completely FREE. Anyone can join, you do not have to be a member of Neighbourhood Watch (NHW), or become a member of NHW to join. You can join as an individual or as a group. So, if you want to receive information but do not wish to be responsible for a larger group, you are still welcome to make use of this messaging system.

As well as Cumbria Constabulary the partners providing information are Cumbria County Council, Cumbria Fire and Rescue Service and Cumbria Neighbourhood Watch Association. If you do not have internet access, contact Jess or Jayne from Milnthorpe Police Station on 101 and they will register your details on the system.

Sergeant John Stephens

Telephone: 101. Email:

KendalNPT@cumbria.police.uk,



J C Derbyshire Ltd

BUILDING CONTRACTORS
TRADITIONAL STONWORK
SPECIALIST

15 ST JAMES DRIVE
BURTON-IN-KENDAL

TEL: 01524 784840
MOB: 07967 092465



Burton Based

Driving Instructor

Dual-controls, patient and friendly
Free Theory Training
Pass Plus and Motorway Training
Nervous pupils welcome

Learning for the first time
or coming back to driving

Call Chris on 782645



Twenty's Plenty For Burton

Please watch your speed!

www.facebook.com/20IsPlentyForBurton



Photo: Barry Morgan © 2012

Signs on the wall of the Kings Arms facing both directions, to remind motorists to watch their speed, are especially timely now as the children are enjoying their Summer holidays. The narrowness and bendiness

of our roads, and the very narrow or non-existent pavements cause real dangers for pedestrians, but especially for children when vehicles come whizzing through the village.

MICHAEL PLATT PLUMBING and HEATING Ltd



CORGI N^o
36856

BATHROOMS SUPPLIED AND FITTED
NEW H.E. BOILER FITTED
RENEWABLE ENERGY PRODUCTS
SOLAR PANEL
AIR SOURCE HEAT PUMPS

DAY TIME 07850 472780

NIGHT TIME 01524 782390

WEB SITE www.mplattplumbing.co.uk

CHIROPODIST HOME VISITS

Ian McCutcheon
MSSCh, Dip. Pod. Med., MBChA

Tel. Burton 781383



What's On at the Heron Theatre Beetham

art
dance
the HERON theatre
music
film



Friday 17 August
THE ARTIST (2011) [PG]
1 hour 40 mins

Director: Michel Hazanavicius

Cast: Jean Dujardin, Bérénice Bejo & John Goodman

This black and white silent film was the surprise hit of 2011 winning both Best Picture and Best Actor (for Jean Dujardin) at the Oscars. Set in 1927 just at the end of the silent movie era, the story line is hardly radical - the fall of one star and the rise of another - but what really marks this film out as a work of genius is that it is such fun. It is one of those elusive films that is both funny, smart and seemingly effortless.

"Everything about The Artist comes as close to perfection as I have ever seen."
(Peter Bradshaw - The Guardian)

Book by telephone or in person when the Box Office is open from 10am to 1pm on Tuesdays and Fridays from September to May and prior to each performance.

Telephone 015395 64283 24 hour Answerphone

E-mail: boxoffice@theherontheatre.com

Web booking form: www.theherontheatre.com

Registered Charity No. 501134

The Honey Tree Chinese Restaurant 293 Marine Road Central, Morecambe

Open 7 days a week for lunch
and evening meals

**Modern authentic Chinese cuisine
cooked fresh to order using
only fresh ingredients**

**CHINESE BANQUET & HAPPY HOUR
DELICIOUS DIM SUM MENU**

Tel: (01524) 423860 or 420944

DRU YOGA CLASSES

**BURTON MEMORIAL HALL
TUESDAY 1.00 – 2.30pm
£5.00 per class**

**ENQUIRIES 015395 64145
Email lindagriffith98@aol.com**

Kirkby Lonsdale Netball Club

Queen Elizabeth School Sports Hall
Thursdays: 7pm - 8:30pm

For fitness or fun, competitive and non-competitive players. All abilities welcome—come along and try the first few sessions for free!

For more information contact:
Hannelie Pearson: 07789 441353
Lisa Longley: 07847 174662

Kirkby Lonsdale Junior Netball Club

Are you a budding player? If so, then we would like to see you at our junior netball training!

Thursdays: 6pm - 7pm

Queen Elizabeth School sports hall, Kirkby Lonsdale
Open to all players of all abilities between years 6-9
(please wear suitable clothing and trainers)

£10 membership fee for the full year

For more information contact:

Louise Dawson
01524 782277 or 0777 136 4708

LONGLANDS

Inn & Restaurant

RESTAURANT, BAR, ROOMS, COTTAGES, FUNCTIONS AND BUSINESS.

Live music every Monday night
and first Saturday each month.

Using local produce, our chef creates hearty meals based on good country cooking with a modern twist.

Monday - Pizza and Pasta Night from £9.95 for two people

Friday - Steak Night from £9.95

01524 781256

HOLME SOCIAL CLUB

01524 781936

Saturday 25 August
MUSIC with MECCA
Free Entry

Everyone welcome



Activity Afternoons for the Over 50's

Join the Silver Songsters on Wednesday 22 August at Burton Memorial Hall for an hour of singing popular songs just for fun. 1.30pm - 2.30pm followed by refreshments. Cost £3.00. Please come along and keep this singing group going in Burton.

Ruth Taylor is the locally based **Village Agent for Milnthorpe, Burton and Holme** and can be contacted on **07787 201259** or via the **Age UK South Lakeland Helpline** on **01539 728180**. Ruth is available to help older people access information and services between 10.00am – 11.30am on Monday 6 August at Burton Memorial Hall. Contact Ruth on 01539 728180.

Registered Charity Number 1141415

BURTON TAXI



AIR & SEA PORTS / HOSPITAL VISITS
SHOPPING TRIPS & PUB RUNS

For a reliable service, please phone

MICK BARKER

01524 782842 / 0781 496 7103

Pilates Classes

Thursdays 3pm - 4pm

Burton Memorial Hall

£36 for 6 sessions or £7 per session

Pilates targets the deep postural muscles resulting in a longer, leaner and more toned body. It is suitable for all ages and fitness levels as exercises can be modified to meet the needs of everyone.

For more details of these and other Pilates classes, and to reserve a place, contact Hilary by phone on 01539 736375 or 0794 851 6223 or by email to: southlakespilates@gmail.com

Callanetics Sessions

Callanetics every Friday morning from 9:30 - 10:30am at Burton Memorial Hall

Callanetics every Thursday evening from 5:30 - 6:30pm and Zumba from 6:45 - 7:45pm at Holme Parish Hall

Special Offer

CALLANETICS & ZUMBA

- 1) 1 Class per week £5
- 2) *5 Classes over 5 weeks £23 a saving of £2
- 3) *10 Classes over 10 weeks £45 a saving of £5

Contact Lesley Gaulter on 01253 868550 or 07749 756992 or email: l.gaulter@talktalk.net and website: www.callaneticsblackpool.co.uk

The Kings Arms, Burton 01524 781409

Children's Holiday Activities: Aug. 13 & 20 from 1pm... Cupcake Decorating, cost £2 inclusive of drink, biscuits & cupcake to take home.

Pool Tournament for 12-14 yrs. & 14-16 yrs. starts from 13 Aug., ring for further details. We are happy for you to leave your children during activities. N.B. Ann is C.R.B. checked.

Monday Steak Night :: Tuesday Burger Night :: Wednesday Curry Night
Thursday World Food Night :: Friday Fish Night :: Saturday Chef Recommends Dishes :: Sunday Gourmet Sausage & Ale Night.

Meals 12-2pm & 5.30-9pm Mon-Tues; 12-9pm Wed-Sun.
Breakfasts every day 9-11am (9-12 weekends)

Takeaway menu: Curries, Burgers, Hot Sandwiches Pizzas etc
OPEN EVERY DAY FOR DRINKS

LMMES
Cinderbarrow



Welcome to the miniature railway at
Cinderbarrow Picnic Area

**Trains will be running on most Sundays and
Bank Holidays (weather permitting)
throughout the Summer
10.30 a.m. - 4.00 p.m.**

For more details ring Peter Ellis, 781057

Chair Yoga

Gentle yoga from a chair followed by hot drinks and biscuits. A new yoga class is starting on Mondays in Burton Memorial Hall from 1.45pm to 2.45pm commencing Monday 10 September.

Enjoy some gentle movements from a chair, breathing practices and meditations, followed by a hot drink, biscuits, and a chat with friends, old and new. Only £5 for an hour of peace.

For further information, please contact Tina (British Wheel of Yoga Teacher) on 01524 782177.

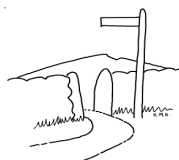


Burton W.I.
Evening Meal
Kings Arms, Hale

Thursday 9 August

Contact: Helena Nixon 01524 781048 for details

New Members & Visitors Welcome!



**BURTON
FELLWALKING
SOCIETY**

August Walks

Sunday 5 - 1.00pm

Tarnbrook 8m

Leader: Celia Hunt

Wednesday 15 - 1.00pm

Hutton Roof - xxxx

Leader: Clive Horsford

Saturday 18 - 9.30am

Wetherlam 9m

Leader: Helen Nixon

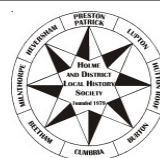
All walks: Meet in the Memorial Hall car park to arrange lifts & share transport to the starting point.

(*** less than 5 miles at a gentle pace)

Visitors £2.00 Membership £8 from Jan 1st yearly

More info from the secretary, Carole, on 782007

or visit our website: <http://fellwalkers.burtonweb.org.uk>



**Holme & District
Local History Society**

<http://localhistory.burtonweb.org.uk>

**Visit to Holme Park Quarry
Monday 20 August**

Meet at the Quarry at 6.00pm

MEMBERS ONLY AT SUMMER MEETINGS



**Holme & District
Flower Club**

**Annual General
Meeting**

**Monday 6 August
at 7.30pm**

Preston Patrick Memorial Hall

Visitors welcome: £4 session

Editorial...

Wonder how they are doing?

By the time BN gets to you our intrepid Olympian, Alex Rutledge, will have played in the opening matches of the Women's Water Polo and hopefully will be heading towards the quarter finals on August 5. Of course we will all be wanting the team to come home with a gold medal each, not least so we can have Alex's photo back in BN clutching her hard-won trophy.

20 is plenty

There's a serious movement to have at least a temporary 20m.p.h. zone during school days when children are arriving and leaving school, as it's the most dangerous time, but we are told that the A6070 through Burton cannot be made 20m.p.h. on a permanent basis as it's an 'A' road. Maybe what should be called for is more emphasis on driving according to conditions (with "conditions" meaning a lot more than the weather) and thinking well ahead? I know when I was taught to drive these were high on the agenda, are these tried and trusted advices not taught now? These 20m.p.h. zones will arrive in Cumbria as they have in Lancaster and elsewhere, so one way or another we will be driven to a slower pace of life, at least on the roads. Perhaps the biggest worry is that the slower speeds will make those who use the phone when driving believe it's safer so they will do it all the more! Roll on the time when cars will drive themselves and we all will just be passengers in them.

Mud, mud, glorious mud...

Not at Burton's very first (and not the last?) music festival on 1 September though, unlike Glastonbury (cancelled this year) / Isle of Wight / T in the Park etc... Maybe the fun (???) of wading calf-deep in mud will be missing but the music will still be there, and the feeling that something special is beginning. Can we put Burton well and truly on the 'Musical Map'? Wait and see is the answer, but for now make sure you get your tickets for the first one to be able to say, "I was there at the beginning!"

AN & BJM



For Sale

Excess items due to house move

Pine frame cheval mirror £15
Pine single bed & mattress, perfect condition £45
Electrolux 1700w bagless vac. clnr. £20
12 mirror tiles 11½"/29cm square £20
Aluminium loft ladder £30
Aluminium steps with top handle £10
Whirligig, as new £15
Cutlery drawer, large, wooden £17.50
Roller blinds, cream pattern, 26"/66cm wide £3.50

Contact Mrs. Twist, on 01524 781902

Swap Shop or **For Sale** adverts are included subject to available space & must incl. a phone number.

Copy of advert should be put into a sealed envelope marked **BN Sales & Swaps** and left at the newsagents .

Annual Gift Subscriptions

If you know of anyone who may like to receive BN regularly each month, why not buy them an Annual Gift Subscription?

For £12 within the UK they will receive a copy of BN each month (11 copies per year). A great way for family, friends and former residents to keep in touch with what's happening here in Burton. Anyone interested should contact BN at the address below.

BURTON NEWS

Please send us your letters - articles - events news - stories - recipes etc for publication

Drop them into The Newsagents, Main Street, Burton or send by e-mail to editor@burtonnews.org.uk

**NEXT MEETING 7.30pm
Tuesday 21 August in BMH**

**LAST DATE FOR COPY FOR NEXT ISSUE
20 Aug for the September issue**

Circuit Training

Every Monday at 7.15 pm
BMH Main Hall

Every Friday at 6.15 pm
BMH Reception Room

Improve your Strength & Endurance
Cardio-Vascular System
Body Composition & Flexibility

For further info call John 01524 781707



Mobile Banking Service

Memorial Hall Car Park

Fridays

10.30am - 11.15am

<http://www.natwest.com/personal/more-ways/g4/natwests-mobile-banking-service.ashx>



Burton Tennis Club

Get fit and meet people. Any age and ability catered for. Join Burton Tennis Club. New membership open from 1 April. Competitions, local league teams. Coaching sessions and club nights and afternoons. Phone Phil Mann 782152 for details.

Burton Crown Green Bowling



We meet every Monday night from about 6.30 until 8.00 (ish) from about mid-March, and anyone wishing to try their hand will be more than welcome. More details from Malcolm Brownsord, Acting Chairman, tel: 01524 781405

KEEP US POSTED!

If you are planning an event in Burton let us know and we'll add a free entry to the list which we publish in every issue. This gives your event more publicity and flags up potential clashes of dates. Let BN help you make the most of your event!

County Library Van Times



The library van will be in the Memorial Hall car park every Monday between 10.00 - 11.00 a.m. Why not pop along and save yourself a trip to Kendal?

Library Coffee Morning

First Monday of the month
10am - 11am



Burton Memorial Hall



Cancer Care Cafe

Last Friday of every month
at Slynedales, Slyne Rd, Lancaster
(just over Beaumont Bridge)

Open for Tea and Coffee
10.00 am - 12 noon

Free Parking
Everybody Welcome!

Further details from 01524 381820

ART IN BURTON

Three art groups meet regularly in the Memorial Hall. If you are interested, why not contact the group leaders to find out more about each session?

Monday 2 pm - 4 pm Mary Newell, tel: 782749
Thursday 9.30 am - 12 noon Judith Ellis, tel: 781057
Friday 9.30 am - 12 noon Paula Firth, tel: 781984

LADIES BADMINTON

Ladies Badminton meets in the BMH every Tuesday from 1.30pm - 2.30pm. If anyone would like to join the group please ask for more details from Stephanie Micklethwaite on 781073.

S. Lakes Age Concern BURTON LUNCH CLUB (for over 55s)

The Burton Lunch Club meets every month in the Kings Arms, Burton. The club is open to anyone aged 55 or older. To join the club and book your lunch please contact Mrs Margaret Prady on 01524 781195.

COMMUNITY INFO

Burton-in-Kendal

Voluntary Car Scheme

If you need transport to hospital, doctor, dentist, optician etc please contact Lynne Herd on 781905. When she is away please contact Peter or Kathryn Smith on 782198. (If you could spare some time as a driver you would be most welcome, please contact Lynne or Peter for details.)

SURGERY TIMES

Dr JH Gorrigan

By appointment only. To make appointments please telephone 015395 63307

Child Health Clinic

1st Wednesday of each month
10.00 -11.00 am

No appointment necessary

Health Visitor: Shirley Bennett 015395 64887

OUT OF HOURS PHARMACY SERVICE

Ash Trees Pharmacy
Market Street, Carnforth

Monday to Friday 7am to 11pm
Saturday 8am to 6.30pm
Sunday 8am to 6pm

Tel: 01524 727877 - Fax: 01524 730421

Useful Phone Numbers

| | |
|------------------------|--------------|
| Burton News Editors | 01524 781306 |
| Burton Post Office | 01524 781828 |
| Burton Morewood School | 01524 781627 |
| Dallam School | 015395 63224 |
| QES, Kirkby Lonsdale | 015242 71275 |
| CrimeStoppers | 0800 555 111 |
| Police non-emergency | 101 |
| Kendal Library | 01539 713520 |
| Kendal Hospital | 01539 732288 |
| Lancaster Hospital | 01524 65944 |

Council Switchboards

| | |
|------------------------|---------------|
| Cumbria County Council | 01228 606060 |
| SLDC | 0845 050 4434 |

Civil Registration Services

Births, Marriages, Deaths

Registration of Births and Deaths is overseen by the Kendal Registrar's Office, based in County Hall, Kendal. Telephone 01539 773566 or send an e-mail to kendal.registeroffice@cumbriacc.gov.uk

Registrations may also be undertaken at Milnthorpe and Kirkby Lonsdale Libraries by appointment only, contact the Kendal Office to arrange an appointment.

To arrange a marriage contact the Kendal Registrar.

SLDC Recycling Information



Andy Vickers

Customer Contact Centre
on 0845 050 4434

email: recycling@southlakeland.gov.uk

Cumbria County Council Highways Hotline

0845 609 6609

to report road or pavement problems

BURTON-IN-KENDAL

PARISH COUNCIL

Meetings are 3rd Thursday of every month
7.30pm in the Memorial Hall

Meetings:

Members of the public are always welcome to observe. Each meetings includes an OPEN FORUM where parishioners may raise matters of concern to them.

Planning applications:

Parishioners are asked to ensure they notify the PC as well as the planning authority of any comments or objections they have about any planning application within the parish.

Agendas & Minutes & Contact Details:

These are available on the PC notice board outside the Memorial Hall, on the PC website, or on request from the Parish Clerk.

Website:

Documents relating to the PC may be downloaded or read online here:

www.burton-in-kendal-pc.gov.uk



FOR FURTHER INFORMATION, CONTACT
THE CLERK - Peter Smith on 782198

ADVANCE DIARY DATES



Silver Songsters, Wednesday 22 August, 1.30-2.30pm, BMH

Burton Fest, the first Burton-in-Kendal Mini-Music Festival, Saturday 1 September 8pm, BMH

Burton 10k and Fun Run, Sunday 9 September 11am, Burton Morewood School, see page 18

An evening with Mollie Warburton & Band, Saturday 22 September, 7.30pm, BMH

Barbara & Jack's Open House for NSPCC, Sunday 23 Sept, 12 - 4.00pm, Woodside Clawthorpe

Burton Memorial Hall Management Committee Meeting, Tuesday 25 September, 7.30pm, BMH

Wine Tasting, Friday 28 September, 7pm, Watersedge Restaurant, South Lakeland Leisure Village

Guides, Brownies & Rainbows Soup Kitchen, Sat 29 Sept, 11.30am - 2pm, Kby. Lonsdale Meth. Hall

CraftMarket 2012, Saturday 29 & Sunday 30 September, 10am-4pm, BMH, fund-raiser for BMH

Auction of Promises for BM School Playground Appeal, Friday 5 October, 7pm, BMH

Onion Show, Sunday 7 October, Kings Arms

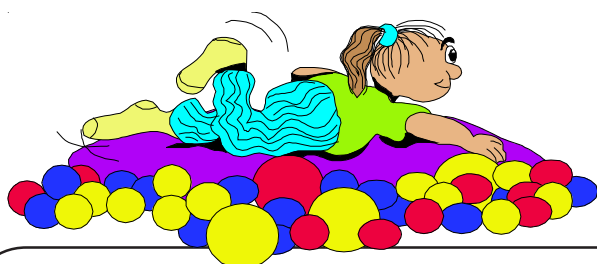
Autumn Coffee Morning, Saturday 13 October, 10am - 12noon, BMH, fund-raiser for BMH

Pampered Chef Night: Canapes for Christmas with Diana Brown, Fri 2 Nov 7pm, fund-raiser for BMH

WI Charity Mince Pie and Coffee Morning, Sat 17 November, BMH

Burton Memorial Hall Management Committee Meeting, Tuesday 27 November, 7.30pm, BMH

BMH Christmas Bingo, Thursday 29 November, doors open 6.30pm, BMH, fund-raiser for BMH



**NSPCC Child Protection
HELPLINE 0808 800 5000
KIDSCAPE 08451 205 204
CHILDLINE
FREEPHONE 0800 1111
BULLYING UK HELP SITE
<http://www.bullying.co.uk/>**

**Do you want a venue for
your charity event or quiz?**

We can supply the venue and light refreshments free, or at nominal cost on a Wednesday or Thursday.

Please contact Ann at the Kings Arms:
01524 781409

**BMH = BURTON MEMORIAL HALL
BMS = Burton Morewood School**

**BCSC = Burton Children's Sports Committee
BADs = Burton Amateur Dramatic Society**