

INSIDE

Letters
pg 2

PC Report
pg 4

Swift Study Group
pg 6

Historical Footnote
pg 8

School News
pg 10

Council News
pg 12

Church
pg 14

Memorial Hall News
Pg 16

Burton Sports Trust
News
pg 19

B4RN Update
pg 20

BURTON NEWS

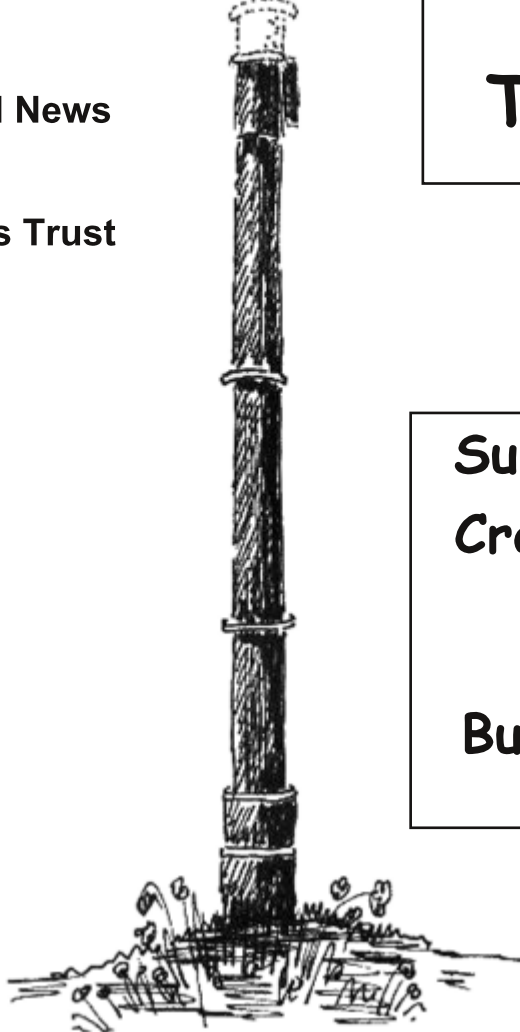
THE VILLAGE NEWSLETTER

October 2019 Issue 296

**43rd Annual Burton
Onion Show**
6th October 2019



at the
The King's Arms



Sunday 27th October
Crafters Stashbuster
Sale

10am - 4pm
Burton Memorial Hall

BURTON NEWS

Please send us your letters - articles - events
news - stories - recipes etc for publication

**Drop them into The Village Store,
Main Street, Burton
or send by e-mail to**

editor@burtonnews.org.uk

**Next Editorial Committee Meeting
7.30pm on Tuesday 22nd October**

**LAST DATE FOR COPY
20th Oct for the November issue**

Burton News Information

Joint Editors:

Sarah Walker & Stephen Rose

Treasurer: Clive Horsford

Distribution Manager: Hazel Parker

Minutes Secretary:

Jenni Ross

Editorial Committee Members:

Joan Barkley

Judith Ellis

Christine Metcalfe

Kath Hayhurst

Frances Roberts

Burton News is published monthly between
February and December (11 issues p.a.)
and distributed by a team of volunteers.

Website: www.burtonnews.org.uk

Email: editor@burtonnews.org.uk

Tel: 01524 923528

The views expressed within Burton
News
are not necessarily the views of the
Editors or the Editorial Committee

Readers'

LETTERS



Are you up for a Christmas sing song?

We do realise Guy Fawkes isn't yet on the bonfire, and the idea of getting the Christmas tree out of the attic is likely to bring on a panic, but what are you doing on Saturday Dec 21st?

How about joining Burton Singers for another of our Christmas Concerts? If you don't know it yet, The Burton Singers Concerts are now an established part of Christmas. There is wine. There are snacks. There is always a glittering raffle with gifts masterfully wrapped by the artistic Sarah Lyle. And of course there are songs, ranging from Bob Chilcott traditional carols to jazz numbers about shiny red boots.

We promise this year no one will dress as an elf...oh wait...we cannot promise that as choirmaster Val hasn't yet chosen her outfit!

Tickets will be available from the shop a month before. For now, put it in your diaries and start practicing for the sing along.

Annual Gift Subscriptions

If you know of anyone who may like to receive BN regularly each month, why not buy them an Annual Gift Subscription? For £12 within the UK they will receive a copy of BN each month (11 copies per year).

A great way for family, friends and former residents to keep in touch with what's happening here in Burton.

Anyone interested should contact BN at the address in the box on page 2.

Please would readers note that letters & articles must include a valid name & address. This can be with-held from publication on request. We will not publish any anonymous letters, or material which, in the opinion of the Editorial Committee, is of an offensive or defamatory nature. BN reserves the right to edit letters & articles in the interests of magazine space.

The Little Cumbrian Tea Room

I would like to thank all the people who supported The Little Cumbrian Tea Room this year. We served 68 customers and raised £735 for St John's Hospice. My thanks also to those who weren't able to come to the cafe but still made donations; I am in awe of the generosity of people. The raffle was won by Phoebe at Number 1, The Square and we filmed the drawing of the winning ticket! Next year we plan to have four mini-hampers - one raffle for each 'sitting' - as we've realised that we can't contact all the people who generously buy tickets in the early part of the day.

Of course an event like this is not just about fund-raising, it's about bringing people together for friendship, community and pleasure. Burton in Kendal is pretty good at these things and they matter a lot. That said, one man commented that he felt like he'd been to The Dorchester! A highlight for me was the group, two women and two children, who enjoyed an impromptu game of cards at their table! As for what goes on in the kitchen - well I couldn't do this without my step-daughter, Claire Weymouth, her children, Sophie and Anna, Anna's husband, Anna's brother in law and my son, Joe. Until next year - keep baking.

Marion Plowright.

The Little Cumbrian Tea Room

St James' Church Boon Day

Saturday 12th October 10am – 1pm

All help welcome even for a short time. Cutting back ivy etc, strimming around graves and walls, cleaning and tidying; light and heavy work, indoor and outdoor. Please bring tools and equipment if you can.

Refreshments available.

Burton and Holme Youth Club closes it's doors

It is with great sadness that I announce the closure of the Burton and Holme Youth Club. The club has been in existence for more than twenty years, but the number of young people using the weekly Friday evening sessions has dropped off markedly in recent years and has now reached the point where it is no longer sustainable.

We've met some brilliant young people through the club, and I wish them all the best in what I'm sure will be their bright futures.

I would like to extend my sincere thanks to all those who have helped to keep the club running over the years, and especially the very small and very hardworking committee, whose members have given up countless evenings to supervise sessions as well as planning events, keeping the tuck shop stocked etc - all so that young people who live locally had somewhere to go to unwind with their friends in a safe environment at the end of the school week. And it's worth saying that most continued to help many years after their own children had left the club. Thank you.

Mark Elliott

Former Chairman, Burton and Holme

Need local overflow for the summer?

www.curwenwoods.com

Curwen Woods Holiday Cottages

Sleep 2,4,5,or 9

Please call **07850872282**

or email **thomasina@curwenwoods.com**



PC Observations...

of the Parish Council meeting by Jon Mackness

Parish Council observations September 2019

Roger Bingham reported that 'rural areas are not as safe as they used to be', as residential and business burglaries are on the increase. Police numbers are planned to increase but residents should make sure that houses, garages and outhouses are locked up safely. Despite just coming out of hospital, Roger was even more energetic than usual and almost without pausing for breath, he continued with news from South Lakeland District Council. This included plans for a new compost bin collection scheme, fireman recruiting campaign, review of house numbering in Church Bank Gardens and a review of fostering arrangements to locate children closer to parental homes.

Tom Harvey, also a Burton District Councillor, reported that the shortfall in funding Burton's Conservation and drainage renewal 'will be covered' and work is planned to start in The Square in late October/early November. Jane Hopwood said that the extra cost of the scheme was partly down to renewing drains and that the Parish Council should do what it can to help fund the work, despite it being a County Council responsibility. Jane also reported that there will be two A6070 road closures, each of a few days.

Two planning applications concerned with houses in The Square were considered and in the light of Burton's conservation plans were labelled 'hideous', 'awful' and 'out of kilter' with the whole spirit of the conservation plans described in the Village Design Statement. Councillors agreed unanimously to object. A planning application to 'discharge conditions'

related to the recent Church Bank Gardens housing development also caused a heated debate. District Councillor Brian Cooper tried to leave the meeting, but Councillors called him back to question why SLDC was not holding the developer to account on the conditions which were very clearly stated when the planning application was first approved. These included making the access road onto the A6070 safe. Brian was left in no doubt how strongly the Parish Council felt about this. He is on SLDC's Planning Committee so let's see what can be done about it.

Amongst other topics discussed:

- Councillors agreed to fund the Library Book Drop scheme for one day a month as requested
- Councillors welcomed the news that the school will be connected to the B4RN network very soon
- The Church Plaque to add names of Burtonians who died in the first world war is still awaiting diocese approval
- Slape Lane and Boon Town Lane are almost impassable and councillors will ask the Lengthsman and others to urgently clear them

The King's Arms, Burton

Meals 12 noon-2pm & 5-9pm Mon-Thurs
12 noon- 9pm Fri - Sun
Breakfasts 8am-9.30am daily (please call to book)

OPEN EVERY DAY FOR DRINKS
Sunday closing time 11pm

GREAT FOOD! GREAT BEERS! & GREAT ROOMS!

0 1 5 2 4 7 8 1 4 0 9

MICHAEL PLATT

TRADING AS



Quality Plumbing & Gas Services

07850 472780

01524 782390

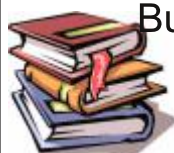
BOOK DROP / COFFEE MORNING

Monday 7th October (coffee morning in aid of Hall funds)

Monday 21 October

10am - 11am

Burton Memorial Hall



BURTON W.I.

Helena Nixon

A group of WI Members paid a very successful visit to the Quaker Tapestry Museum and found it very enjoyable and interesting. They concluded their Tvisit with Afternoon Tea.

At their September meeting Jan Berry demonstrated how to make sugared flowers.

Earlier in the day Members had attended the Westmorland Show where they received numerous silver and red stars for their Co-operative Entry.. Helena, Hazel and Kath also received 5 gold stars and 5 silver stars between them for their Jams, Crafts and paintings .

The Competition for a small Bonbon dish was won by Paula with Ann second. The raffle was won by Ann with Kath second...

At the **October Meeting** Laura Harker will be talking about 'Seasonal Cookery'. The Competition is for A Favourite Recipe and the hostesses are Glenis Smith and Dorothy Spencer...

THE BAY BLIND COMPANY

PLEATED ROLLER ROMAN
VENETIAN VERTICAL
VELUX

Each blind is measured and manufactured individually, and fitted personally
Commercial and Domestic : Evenings and Weekends
David or Sandra

Phone/Fax 01524 781149 Mobile 07957 343071

2 Boon Town Burton Carnforth Lanes



GEC Cleaning Services

Established 1996

CARPETS NEED CLEANING?

Using our superior thermal system your carpets will be beautifully clean, deodorised and protected all in one process.

Free Quotes A Pleasure

Call Gary on 01524 782857

Linda Green



**Your Local
Mobile Hairdresser**

7 Tanpits Lane, Burton-in-Kendal

Tel: 01524 781811



Autumn Bird migration is well on its way. If you happen to be heading along Vicarage Lane towards Dalton and wondering just who that guy is stood at the top of Mike Taylor's field with binoculars around his neck there is a good chance it could be me! It's that time of year again when the Meadow Pipits, Chaffinch and Linnets are flying through our skies on their way South to their various destinations, some even making it as far as France and Spain. We seem to be getting record numbers of Linnets so far this year, and that is set to get even better once the continental Linnets join in the numbers, which I would expect anytime now.

Most mornings I get a skein and sometimes several skein of Pink Footed Geese, which are usually extremely high up and usually you will get a vocal warning from them to tell you that they are passing overhead, and that's when the fun really starts. Yes you can hear them OK, but finding them can prove difficult. I have made up my own rules when it comes to passing Pink Feet eg: If they are heading to the South West they are heading for Martin Mere near Southport or maybe more locally to Morecambe Bay, but if they are heading in the South East direction which many are, then they are probably heading towards the plains of Lincolnshire or Norfolk.

This last couple of days I have noticed the Starling numbers are building. I can only count them as they come overhead of Vicarage Lane which is usually around the 7am mark, which after having left their roost site at Leighton Moss or Silverdale Moss, and heading East to forage for the day, I presume going to Hutton Roof, Kirby Lonsdale, Leck and maybe even further afield. They are currently at about 150 birds which will grow in number by the day, but this will accumulate drastically in the coming weeks, especially by the middle of October

when their numbers could swell to 20-50000 birds or more. These recent increases tie in with reports I received yesterday from Spurn (East Coast) saying they too have been recording their first continental Starling arrivals.

If you walk through Holme Stinted Pastures towards the Fell, you cannot help but see all the hawthorn trees so heavily populated with haw berries, and if you are lucky you may just hear a cackling Blackbird or other thrush sampling these delights on offer. We are talking millions of berries, but one thing is sure, most of them will be gone over the coming weeks especially when the winter visiting thrushes get chance to participate. We should start seeing our visiting Redwing and Fieldfare by the middle of the month. The first continental Snipe are arriving (20th September) and it won't be long before we start getting the Woodcock as well. Lots of them like to spend their winter months on Hutton Roof. You don't see them as a rule because they are tucked in all snug somewhere safe and have the perfect camouflage. Yet occasionally I will accidentally disturb them when walking the stints or the clints. I am not sure who startles who the most!

High pressure has been well and truly set in for the past few days and there have been some really nice warm sunny days. It's also allowed many butterflies to grace our skies. I have seen Brimstones, Small Tortoiseshells, Red Admirals and lots of various Whites. The Red Admirals are all heading South and they too are on a massive southerly migration just like their cousins the Painted Ladies. This long migration can continue for weeks, I have seen Red Admirals heading South as late as 2nd November.

It's nice to go out on a botany high and that's just how I felt with the Field Gentian recent finds on Holme Stinted Pastures. They are beautiful but so small and can so easily be missed. I counted well over 300 of the stunners.

Looking forward so much to witnessing the Redwings and Fieldfare passing over our

little village in their large parties usually heading in a North West direction into the Lythe Valley, but this can so easily change according to the weather patterns and wind directions on the day, but for sure I hope to be stood there with pen and notebook recording their numbers as they fly past. By the way my recording notes are all published locally on my blog site (see link below), and on the Lancaster and District Birdwatching Society (Bird Sightings) and sent through to Trektellen in the Netherlands who collate all bird records from recorders throughout the UK and Europe, this information is to help the study of migration and is also then sent back to the UK to be included in the BTO Migration site records. Visible Migration Records for Burton at: <https://arnsidesilverdale.blogspot.com/2019/09/2019-visible-bird-migration-reports.html>

If you want to check on more of our local nature why not check these sites:

I LOVE ARNSIDE AND SILVERDALE:
<https://arnsidesilverdale.blogspot.com/>
 A day to day blog about the nature especially on Hutton Roof
 THE ORCHIDS OF HUTTON ROOF:
<https://epipactisatrurubens.blogspot.com/>
 My photos and study notes in relation to the Orchids of Hutton Roof
 THE FLORA OF HUTTON ROOF:
<https://floraofhuttonroof.blogspot.com/>
 My photos and study notes in relation to the Flora of Hutton Roof

DALTON WOODLAND BURIAL GROUND

Natural Woodland Burial Ground

"Return to the Earth, naturally"

www.daltonwoodlandburial.co.uk

Burton-in-Kendal: 01524 782442



Pass first time
 or receive free lessons until you pass
Call Richard on 01524 781704
www.freedomdrivingschool.biz

Barton Tech Support

For all your computer needs

Desktops supplied / built to order /
upgraded / repaired

Laptops supplied / upgraded / repaired

Peripherals supplied / repaired if possible

Networks (wireless & ethernet)

Backup systems to suit user

Call Barry on 01524 781306

Email: bts@yobunny.co.uk

CINDERBARROW MINIATURE RAILWAY



**Open Sundays and Bank Holidays
from 7 April**
(weather permitting)

10.30am-12.30pm & 1.15pm -3.45pm

www.lmmes.co.uk

**Halloween special from 5.30pm,
31 October**

Tarn Lane, Yealand (just off the A6)

HISTORICAL FOOTNOTE

by Roger Bingham

The Parson's Living.

Historically, when a priest (also called a parson) was inducted he was granted 'the parish Living'. As such he had a 'Parson's Freehold' for life on the parish income. If he was unable to exercise his ministry or because he was an absentee parson (which was common) he could appoint a curate, at about 10 percent of his dues. The parish's basic income was derived from land. If the parson obtained all the revenue he was called a 'rector'. When rectory rights were shared with a lay person, the parish priest was said to be a deputy for which the title was 'vicar'.

Since the 1970's most parsons' freeholds have been suspended and today's incumbents, including Burton and Holme's, are Priests in Charge who can be moved around by the bishop. Burton's endowments are first recorded in c. 1092 when a Norman baron Ivo de Taillbois granted the rectory of 'Burtun' and 'Clerc-thorp' to St Mary's Abbey at York. Later on, other parish lands were granted to Cockersand Abbey, south of Lancaster. There were regular disputes as in 1276 when William de Rutherfeld sued Roger de Burton about grazing rights. Over the years the Vicar's Glebe Land dwindled. In 1732 the glebe belonging to the vicar consisted of a vicarage house, barn, stable 7 acres of arable and meadow land and two acres of moss. The main income came from tithes (10%) of the produce of the land. Originally, in a largely cashless society, tithes were paid in kind. Thus the runt of a sow's litter, invariably went to the church and

was known as the 'parson's piglet'. Most parishes had Tithe Barns. Burton's barn is said to have been at the west end of Clawthorpe Lane and a tithe in hay is mentioned in the 1732 survey. By then animal tithes could be commuted to a cash fee "for every cow that hath a calf in a year 2d'.

Seasonal benevolences included 'a person who has six geese should give the vicar one 14 days before Michaelmas'. Wool was stipulated, as he who 'shears 10 fleeces two fleeces to be chosen and then the vicar take one'. The most difficult tithe to collect might have been on bees: 'If ten swarms ye vicar to take one, the first he touches'. (Was he 'stung'?) A few pence also had to be paid on hemp and line (flax), turnips, potatoes and 'products of the garth, seeds and esculents'- (cabbage/vegetables). The parson also collected poll taxes: "For every unmarried person above 16-a halfpenny'. Finally there were church, or 'surplice, fees': for marriages by licence 5/-, by bans 1/-; for burials 1s 'except for women who died in child birth'. RKB.



Come and join us on Tuesday mornings from 9.30am to 11am in Burton Memorial Hall and experience the benefits of Yoga:

A happy and healthy body, mind and breath

No previous experience necessary

For further details, please contact
Tina (British Wheel of Yoga Teacher)
Tel: 01524 782177 / 07813 481792
tinafoxwell3@gmail.com



Age UK South Lakeland will be having an information table at the next Coffee Morning on Monday Oct 7th at 10am. Come and have a browse!

We will be holding an **Afternoon Tea Dance** on **Friday 8th November 2pm - 4pm** at Burton Memorial Hall with the band Rawthay Rhythm.

An afternoon of music, singing, dance and of course cake! No need for a partner, just come and enjoy the atmosphere and music. Booking is preferred at this free event. Please ring 01539 728118 to find out more.

Men U Can Cook!

A Beginners' Cookery Course just for Men at the Athenaeum in Heversham on Friday 1st, 8th, 15th & 22nd November from 1.30 - 3.30 pm. Learn how to cook some simple healthy meals and be a bit more confident in the kitchen. Cost is £20 for the 4 weeks payable at the first session and you must be able to attend all four sessions. If you would like to find out more or to book a place, please contact Age UK on 01539 728118. Places are limited so book early!

IT Drop In Arnside Educational Institute - Westmorland Room Tuesdays 2.00 –

4.00pm - refreshments available. Would you like to find out how to go online? Share your computing ideas with others? Keep in touch with family and friends? Do you need help filling in forms? Do you want to learn how to shop, bank or even trace your family history online? We are a small, friendly group who have varied levels of ability from the complete beginner to those who love to share their ideas with like-minded computer enthusiasts. We use all types of computer operating systems on laptops, tablets and smart phones – just bring along whatever you have. There will be a donation of £2 per session for EI members and £3 for non-members.

If you would like further information about any of the above or any of the services which Age UK South Lakeland can offer older people, or if you would like to volunteer for us, please contact us on 01539 728118 .

Berry's Garden Services

- General Garden / Grounds Maintenance
 - Lawn Cutting
 - Hedge Cutting
 - Planting

Contact Nick

07766 395595 / 01539 583754

berrysgardenservices@gmail.com

www.berrysgardenservices.co.uk

(Also on Twitter and Facebook)

HALE GARAGE CO



(Practical Automobile Engineers)
Established over 70 years

Main A6 Road, Hale

New & Used Car Sales Service & Repairs

Full Dealer Computerised Diagnostics Equipment

Petrol & Diesel MOT Testing. Body Repairs, Tyres

Batteries, Exhausts & all your Motoring needs

Free collection or loan car service

015395 62173 / 62839



DOMESTIC SPARKLES

- ALL ASPECTS OF CLEANING UNDERTAKEN, SHOPPING, APPOINTMENTS ETC
- FULLY INSURED
- DBS CHECKED
- HONEST, RELIABLE AND FRIENDLY SERVICE
- REFERENCES AVAILABLE ON REQUEST

FOR A NO OBLIGATION CHAT CALL JANE ON

07940265663

EMAIL [JANE@DOMESTIC SPARKLES.CO.UK](mailto:jane@domesticsparkles.co.uk)



**BURTON
MOREWOOD
SCHOOL**

www.burtonmorewood.cumbria.sch.uk

Our new Reception children have settled brilliantly into school and are a joy to be with. They are becoming more familiar with their new classroom, the adults who work with them and, very importantly, making new friends. The children have enjoyed using the outdoor area, the creation station, the sand and water areas as well as the construction area. They have already visited the orchard to gather apples to make apple cakes and they took their magnifying glasses to look more closely at them, especially the rotten ones! Well done to all the children for such a wonderful start to the year.

Year 1 have settled well into their new classroom with Mrs Stewart their new Year 1 teacher. Like Reception, they have been out to the school orchard to collect apples, then they prepared and cooked a delicious apple cake - yum! The children have written recipes, looked at the anatomy of an apple and created the most stunning observational chalk



drawings too! Wow - what a great first week.

In English Year 2 have been looking at writing descriptions using adjectives and conjunctions. They have started to learn about significant people in History, and in particular Florence Nightingale. They are researching how she improved hospitals and the lives of many suffering soldiers. In Art they have been studying the work and life of LS Lowry. They took a close look at his famous industrial landscapes, and then had a go at painting their own.

Year 3 have written some lovely reports all about themselves. They have been re-capping place value in mathematics and have started to learn about the new history topic – the Stone Age.

Year 4 have jumped back into school life with a spring! In English they have written a fantasy story based on a short animation clip: 'Something Fishy'. In Maths they have been rounding 3 and 4 digit numbers to the nearest 10, 100 and 1000. In Science they are studying sound; how it travels and how we hear it. For their topic work they are using atlases to map modern day Central America and locate the area where the Maya were based. They have been refreshing their tag rugby skills in PE and in D&T they are planning and discussing their model of Chichen Itza.

In English Year 5 have started to read together their class book 'Street Child' as part of their Victorian Topic. Keeping with the Victorian theme, they are very excited about their up and coming residential trip to Hawse End where they will be experiencing a Victorian Christmas.

In Art they are studying the designer William Morris and his wallpaper designs and place value has been the challenge in their Maths.

As part of their Outdoor 'Forest School' learning, they have been looking at the school grounds with a fresh eye. Years 5 and 6 have started their swimming sessions for the first time – they were great! Our school is fortunate enough to have the support of a member of PE staff from Dallam school, who joins all of our year groups. Year 5's activity for this half term will be honing their netball skills.

Year 6 have started their WW2 topic. They have discovered how and why WW2 started, which countries were involved and who the leaders were of the allied and axis powers. They ran the first collective worship last week, looking at one of our school's Christian values – compassion. The children and staff presented the assembly together with some of the children acting out a bible story. They have also started their science topic – light. They have enjoyed carrying out a range of investigations including how to change the direction of light, and discovering whether or not light is split into lots of different colours.



www.burtonmorewood.cumbria.sch.uk

TEWITFIELD METHODIST CHURCH
LA6 1JH - Kellet Lane by Longlands Hotel

Join us on Sundays 3pm

All visitors are most welcome

For more information phone 07786 264903

Warton Methodist Church
Borwick Lane, Warton

Sunday Morning Service 10.00am
Sunday Night Live 6.00pm

*Various Connect Groups
through the week*

All Stars 6-11yrs Friday 6-7pm
All Stars + 11-15 yrs Friday 7.30 - 9pm

www.wartonmethodist.co.uk
Tel: 01524 732626

St. Mary's R.C. Church
Yealand Conyers

Mass Times: Sat 6.00 pm

Contact: Canon J Gibson
01524 732940
for further information

Yealand Quakers

Yealand Meeting House
18 Yealand Road, Yealand Conyers

**Our normal Sunday Meetings for
Worship are held from 10.30 - 11.30am**
Visitors are always welcome

For more information call:
01524 781601 or 01524 782052
or 01524 732336

Roger Reports...

From the County & District Councils

Coming at the end of the long summer lull in council meetings very few committee reports were available before the BN deadline. Even so, on the 11 September SLDC's cabinet gave cautious approval to the subsidised heritage project to refurbish Burton Square and to encourage the planned restoration of the Royal Hotel and other neglected Main Street structures. Changes in planning applications for Church Bank Gardens are awaiting consideration by the Planning Committee. Following a useful note handed to me by a member of the public at the August Parish Council my on-going attempts have been boosted to get the County Council to repair our village pavements especially between Hollowrayne and the church entrance. When there are big congregations, as for several recent funerals, the footway narrowness is bad enough without being encumbered by perpetually increasing erosion.

On the County Council, the 2020-21 budget process has been encouraged by much higher than expected central government grants, but of course, complicated by everybody disagreeing with what the boosts should be spent on. It was even argued that the increased police grant was pointless because we wouldn't get the recruits. But as regards Cumbria we have already fulfilled the extra 24 officer quota for this year and for another 20 for the next 12 months. Unfortunately in our normally low crime area it looks as if we will need the money.

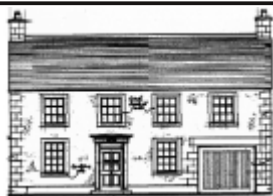
From July 2018-June 2019, 103 crimes were recorded in Burton and Holme which works out at 34 per 1,000 persons which, although this is a lower than the national average, is the same as for county except

for burglaries where the figures are 5.3 for Burton and Holme as against 4.1 for Cumbria as a whole which were 16 in the last year. Despite worries about village anti-social behaviour a few years ago our ASBO rate has improved as it is 5 per 1000 population compared to 17 per 1000 across the county and 22 per 1000 nationally. One of our weaknesses is that throughout the county we have failed to fulfil our 'affordable housing quotas' which is confused by what is regarded as 'affordable' in e.g. Burton is more than twice as dear than in Barrow which perhaps explains why so much of the controversially allocated developments sites adopted after ten years of debate in 2014 have not been built on as yet. Another of my worries concerns fire fighting where an unconfirmed report announced that Fire and Rescue staff will have to be within five minutes of reaching a fire station for a call out. In a rural and sparsely populated area where people largely work away from their villages this seems to be an unrealistic aim.

Health wise we are very healthy as the most recent statistics show that 49% Burton and Holme residents are in very (!) good health 'with only 1% being deemed to be in be in poor health' which is far better than the County and National average. But SLDC's workforce sickness statistic are mixed. In 2018-19 the rate was 8.92, better than 10.28 in 2010 but worse than 7.13 in 2017-18. But, happily, Cumbria's smoking statistics have hit a new low having dropped to 13.6% from 20% six years ago. So, at least locally, we are keeping calm and carrying on. All the best-Roger.

You can contact Roger as follows:
South Lakeland District & Cumbria County
Councillor R.K. Bingham
The Smithy, Ackenthwaite,
Milnthorpe, Cumbria, LA7 7DH
Tel: 015395 63694
e-mail: roger.bingham@cumbria.gov.uk

**Architectural & Building
Surveying Services**



PLANNING / BUILDING CONTROL
APPLICATIONS
FOR EXTENSIONS, NEW HOUSES,
COMMERCIAL
PROPERTIES INCLUDING ALTERATIONS &
REFURBISHMENT.

Stuart McMinn BSc HND ACABE
Tel / Fax 01524 781081 Mob. 07729 845147

CHIROPODIST

HOME VISITS

Ian McCutcheon
MSSCh, Dip. Pod. Med., MBChA

Tel. Burton 781383



**Thursdays
1pm - 3pm
Term-Time
Only**

**Indoors and outdoors
Singing and music
Themed craft weeks
Refreshments for all!**

Stay and Play Session for 0-4 years
£2 per child, under 6 months £1
Burton Memorial Hall

**Find us on Facebook:
facebook.com/burtonplaygroup**

**Lawrence Taxi
& Private Hire**

Call Catherine and Duane on
07720205099

www.lawrencetaxi.co.uk

- * Local and Long Distance
- * Airport / Seaport
- * Pre-bookings taken
- * 6 Seater
- * All areas covered

CARD PAYMENTS ACCEPTED

NEIL HAWES

CARPENTRY AND JOINERY SERVICES



ESTABLISHED 1994

ALL JOINERY, CARPENTRY AND GLAZING
WORK UNDERTAKEN

**OFFICE 01524 936416
MOBILE 07790 736605**

THE FAIRBANK SOCIETY

Fairbank, Kirkby Lonsdale. LA6 2BD

**Supported Housing
for Independent People**

For information contact
Susan Stoddard – 01524 271077
manager@fairbanksociety.com
www.fairbanksociety.com

Paddock & Garden services

Grass cutting, topping, feeding, rolling,
harrowing, hedge cutting, tree felling,
fencing, landscaping and ground
clearance.

**Call Nick, 01524 782210
or 07946 354916**

Vicar's Letter...

Where's the church?

"Here's the church and here's the steeple, open the doors and here's all the people" I imagine that you know this children's rhyme with its hand actions (tricky for little ones!) It's not perfect - most churches around here have towers, not steeples - but it does at least make clear that the church is the building with its people and not just the empty building. We have a beautiful church building here in our village but if you really want to see the church then you need to come when the church is in the church. And you would be very welcome too! In the same way it can be interesting to visit an empty football stadium or theatre but to really see what the building is for you need to be at the big match or enjoying the play.

The word 'church' in our Bibles translates a word (Ekklesia in Greek) that means 'assembly' or 'congregation'. Buildings often get named after the people who meet there: 'synagogue' means 'assembly' and 'parliament' means the people who talk together to make our laws but we think of these as places too. 'Church' properly means those who discover that they are called by God to belong to him, to serve and love him and to gather together

week by week in his name. The place where we do that also gets called 'the church'.

That said, we are pleased that our church building is valued and appreciated by so many in our village, not just by those who gather each Sunday and if we are to be able to maintain it for the future we are going to need the help of a good number of you. So if you might be willing to tackle some DIY tasks, wield a paint brush or even to organise contractors to get on with some of the more serious repair projects then do please get in touch with me, a Warden or anyone from the congregation. Thank you. We also have Boon Days when we encourage as many as possible to join in the fun of maintaining the grounds and deep cleaning the building – all in return for a cup of coffee! Burton's is on 12th Oct; we've just had one in Holme but there will be another in the spring.

Sincerely
Graham Burrows
781210
vicarburtonholme@btinternet.com

St James, Burton & Holy Trinity, Holme

The Vicarage, Glebe Close, Burton

T: 01524 781210 M: 07740 622962

E: vicarburtonholme@btinternet.com

W: www.burtonandholmechurches.org

Burton St James details

Wardens:

Michael Carr 781283

Frances Roberts 781943

Administrator/Treasurer:

Pat Whalley 782296

Children at Holy Trinity & St James

We are delighted to welcome babies and children and we love hearing them in our services as people of all ages come together to worship God. We have toys and other activity material available. Each church is equipped with a toilet and a room which parents and children can use when they need a break from the service. Our families support team is available to help as needed and to offer an activity for children during part of the service. We take safeguarding seriously and our families support team has been cleared for work with children.

St James' Burton

October 2019 Services

Sunday 6 October Harvest Thanksgiving
11am Morning Worship with Communion

Sunday 13 October
11am Morning Worship

Sunday 20 October
11am Morning Worship with Communion

Sunday 27 October
11am Morning Worship

November 2019

Sunday 3 November
11am Morning Worship with Communion

Our church website is
www.burtonandholmechurches.org
Recent sermons can be listened to on the
'Sundays' page
Service times can be checked under 'Coming
Up' on the 'Welcome' page

*Services at our sister church, Holy Trinity
Holme, are usually at 9am each Sunday.*



PRAYER REQUESTS

If you would like to request prayer for yourself or for anyone else, please contact one of the Church Wardens.

TRANSPORT TO CHURCH

If anyone will need a lift to either Burton or Holme church, please contact one of the Church Wardens.

PASTORAL VISITING TEAM

If you would like a visit from someone on behalf of St James' church please contact Yvonne Wilson on 01524 781504.

Goad Joinery Ltd

All aspects of joinery including:

Renovation, Doors, Windows, Sky Lights, Flooring
Extensions, Fitted Kitchens, Fencing
Barge Boards & Soffits, Garage Doors
Loft Conversions etc

Trusted Time-Served Joiner

Call for a free estimate, no obligation
Burton in Kendal 01524 782939

COLIN HARPER BUILDING SERVICES

- * alterations
- * extensions
- * plastering
- * roofing
- * patios
- * stonework
- * drainage
- * tiling

Quality work at competitive prices
Free estimates

Tel: 01524 781194

Mobile: 07880 925170

39 Trinity Drive, Holme, Carnforth, LA6 1QL

The Word From BURTON MEMORIAL HALL



Activities and groups are back in full swing at the Hall after the Summer break, but we do still have some time slots free if you are looking to host an event or start a new activity group. Just get in touch by email to bmh@burtonweb.org.uk and let us know which dates you are interested in and we'll get back to you.

The Autumn events programme for the Hall itself includes the new season of wildlife talks which started in September with David Mower's presentation on Leighton Moss Nature Reserve. The next talk will be on **Thursday 31st October** when Bryan Yorke returns with "On Our Doorstep, the year unfolded" where he will be sharing exciting news about our flora and wildlife from this year. Due to the Christmas Bingos the November talk will take place on **Monday 2nd December** and will be given by Bob Cartwright of Westmorland Red Squirrels, with his talk "Managing Red Squirrels". All talks start at 7.30pm and the cost is £2.50 which includes tea and biscuits and everyone is welcome.

I mentioned the **Christmas Bingos** and you might like to note the dates of these: **Thursday 21st and 28th of November and Friday 6th and 13th December**, more details will follow in the November issue. We are planning a Burns Night Supper and Ceilidh in January 2020, so watch out for details of tickets for that too.

Our **200 Club** is now up and running, if you want a number or two (or more!) please contact the Club organiser on bmh200club@outlook.com. The Club will raise much-needed funds for the upkeep of the Hall, and you might win a cash prize as well!

Finally can I add a plea to anyone with very young children (pre-Pre-school age) to check out the weekly Burton Playgroup which meets every Thursday afternoon from 1pm - 3pm in term time in the Hall. This group is struggling with low numbers and it would be a tragedy if it were to fold, so if you have very young children why not pop along and take part. The group has a Facebook page if you want to check them out or make contact: www.facebook.com/burtonplaygroup.

Anne Nichols, Chair of the Management

BURTON MEMORIAL HALL
JOIN OUR 200 CLUB

£1 per
number per
month or £12
annually

Become a
part of your
local
community

50% of the
membership
fees goes to the
**MONTHLY CASH
DRAW**

To Be
Launched in
September
2019

**BMH 200
CLUB**

Contact Jane Orr – bmh200club@outlook.com

Support Burton Memorial Hall!

Burton Memorial Hall (Mam Street, Burton, Cumbria LA6 1NA) is registered with the Charity Commission in England & Wales, charity no. 505018.

An Early Note from the Post Office about Christmas Posting 2019

So...the kids have only just gone back to school, we still have the occasional gloriously hot days, we have the Onion Show & Halloween to look forward to and Christmas feels like a long way into the future. However, planning ahead, you should know that as usual, the last posting dates for sending Surface Mail are unseasonably early; in fact for the furthest destinations they are VERY soon.

For parcels sent by "International Standard" (Airmail) there is no rush, you have until the beginning of December for the furthest destinations. However, if you are planning on sending parcels via the slower, cheaper option of International Economy (formerly known as Surface Mail) the recommended last posting dates are:

- Saturday, 5th October– All non-European destinations except those mentioned below.
- Saturday, 12th October – South Africa, Hong Kong, Singapore, the USA & Canada
- Saturday, 2nd November – Eastern Europe, Greece, Cyprus, Turkey, Malta & Iceland
- Saturday, 16th November – Western Europe

Remember that parcels sent outside the E.U. need to have a customs form attached, these are available at the Post Office Counter. (Depending on the outcome of "BREXIT" this soon might include ALL parcels) Also remember to put your name and address on the top left hand corner of the front of your package; this will enable Royal Mail to return your item should overseas customs authorities refuse it entry into their country.

A reminder about size and weight for parcels sent abroad.

Before you go out and buy huge Lego set for your grandchild in France, may I remind you

of the maximum sizes for sending items abroad with Royal Mail.

The maximum total of (length + width + height) is 90 cm (approx. 3ft) with the maximum single dimension of 60cm (approx. 2 ft.). Also, the maximum weight is 2 kg.

It is really easy to exceed these and then the parcel would cost a great deal more to send via Parcel Force. It is sometimes cheaper to split a heavy parcel and send two packets.

Dangerous Goods

To comply with national and international regulations governing the carriage of mail, and to ensure that mail in transport does not present a danger to the general public, Royal Mail must restrict or prohibit certain items from their network.

So as usual, forgive us when we ask you "what are the contents of your parcel"; it not just because we are being nosy or looking for gift ideas ourselves, but because there are packaging restrictions on items containing, for example, batteries, nail varnish, perfume, aerosols etc.

Specifically C, D, AA, AAA type alkaline batteries must be new and in their original retail packaging. Lithium batteries (the type commonly found in mobile phones and laptops), cannot be sent alone, they must be packaged with the equipment.

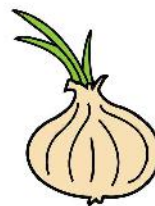
Money & fine jewellery should always be sent by Special Delivery or an International Tracked service to be sure that it is covered for compensation in the (hopefully unlikely) event that it is lost in transit.

Beware, for overseas mail, some countries do not permit the import of lithium batteries or cash at all.

As always, come & ask us at the Post Office Counter for further advice.



43rd Annual Burton Onion Show. 6th October 2019. Kings Arms.



Class No. List of Classes.

1. 3 Dressed Onions
 2. 3 Leeks
 3. 3 Onion Sets
 4. 2 Cabbages
 5. 3 Gourds
 6. 3 Beetroot
 7. 3 Carrots
 8. 3 Salad produce
 9. 3 ind' vegetables
 10. 5 ind' vegetables
 11. Heaviest Onion
 12. Heaviest Veg
 13. Novice Class-any veg
 14. 5 Dessert Apples
 15. 5 Cooking Apples
 16. Pot Plant
 17. Vase of Flowers
 18. Vase of Dahlias
 19. 3 Chrysanthemums
 20. 3 Poultry Eggs
 21. Chocolate Cake
 22. Fruit Pie
 23. Loaf of Bread
 24. Novelty Cake
 25. Swiss Roll
 26. Tray Bake
 27. Homemade jam
 28. Homemade chutney
 29. Best worst effort.
- (Anything is considered in this class)



Children's Classes. Up to yr 2 and yrs 3-6.

- Painted Pebble
- Fruit and Veg Animal
- A Face on a Paper Plate
- 4 Decorated cup cakes

Entries in by mid day.

Auction starts at 2pm.
of Class Lots and Promises.

Raffle and children's competitions.

Food and drink available all day.

Children's entertainment.



Gary's Property Maintenance

07772 922206

Burton Handyman

FOR YOUR HOME MAINTENANCE
IMPROVEMENTS AND REPAIRS



1:1 Luxury Home Boarding

Our friendly home from home
service arranges for your dog
to stay with one of our
carefully selected and
inspected special hosts

Contact Alison on 01539 234044
alison.quigley@barkingmad.uk.com

or Missing a dog in your life?
Become a Barking Mad Host
www.barkingmad.uk.com

Burton Sports and Recreation Trust

It's that time of year again when the Burton Sports and Recreation Trust are planning their annual bonfire and firework display. It will take place on Tuesday 5th November up at the recreation ground (MUGA) behind the Royal Hotel.

There will be a best pumpkin and guy competition on the night with prizes for the winners if all entries could be up there by 7pm for judging. We will also be serving hot refreshments, and beverages, such as hotdogs and hamburgers on the night and with the gates opening at 5.30pm there is plenty of time to grab yourselves a drink or a bite to eat before the event gets going.

The bonfire is being lit at 6.30pm with fireworks starting between 7.00 - 7.30pm. Entry is £3 per person or £10 per family of four or more and Pre- School and under go free. This is set to be a great display which we hope will be well-supported .

If you are interested in been part of this event and been a part of our committee we will be holding our annual AGM in the village hall on **Wednesday 16th October** at 8pm. We will be in the club room and we are always on the look out for more committee members so why not pop in and see what it is all about. We organise events for the children of the village and the organisation of the MUGA which is an area for all the community to enjoy and are currently looking for people to take up roles on the committee so we hope to see some new faces on the night.

On **Thursday 28th November** is the Burton Sports and Recreation Trust Christmas Bingo. This is always a popular and well-supported event and with a chance to win some brilliant prizes such as shopping vouchers, bottles of wines and spirits, and also prizes for the children, it is set to be a great night of bingo for all the family. We will also have

the raffle, flyer for cash, and a great choice of fresh sandwiches, cakes and beverages on offer on the night as well.

On **Sunday 1st December** we will be holding our annual children's Christmas parties for the children of the village and Burton Morewood School. These will be held in the Memorial Hall from 2pm for the younger ones (aged 0 to yr2 - parents must stay with all children) where we have an afternoon of fun and games planned plus a visit from our favourite man (Father Christmas). After this we have the older ones disco (yr3 - yr6) this is one where the children can be signed in and dropped off and they enjoy a couple of hours with their friends. This is a great event for the children and we look forward to seeing lots of them there.



Holme & District Local History Society

Monday 21st October at 7.30pm

Lakeland Architecture through the centuries.

Andy Lowe

Membership £12 p.a. 8 meetings & 4 outings

Treasurer Miss D Spencer, **01524 781540**
dorothyspencer263@gmail.com

Coordinator K Hayhurst, **01524 781613**

<http://localhistory.burtonweb.org.uk>

The core fibres have been blown from Dalton to the B4RN cabinet on the school field. They now require splicing (joining) by the B4RN team. Once this is completed the school will have a free 1000 mb/s service.

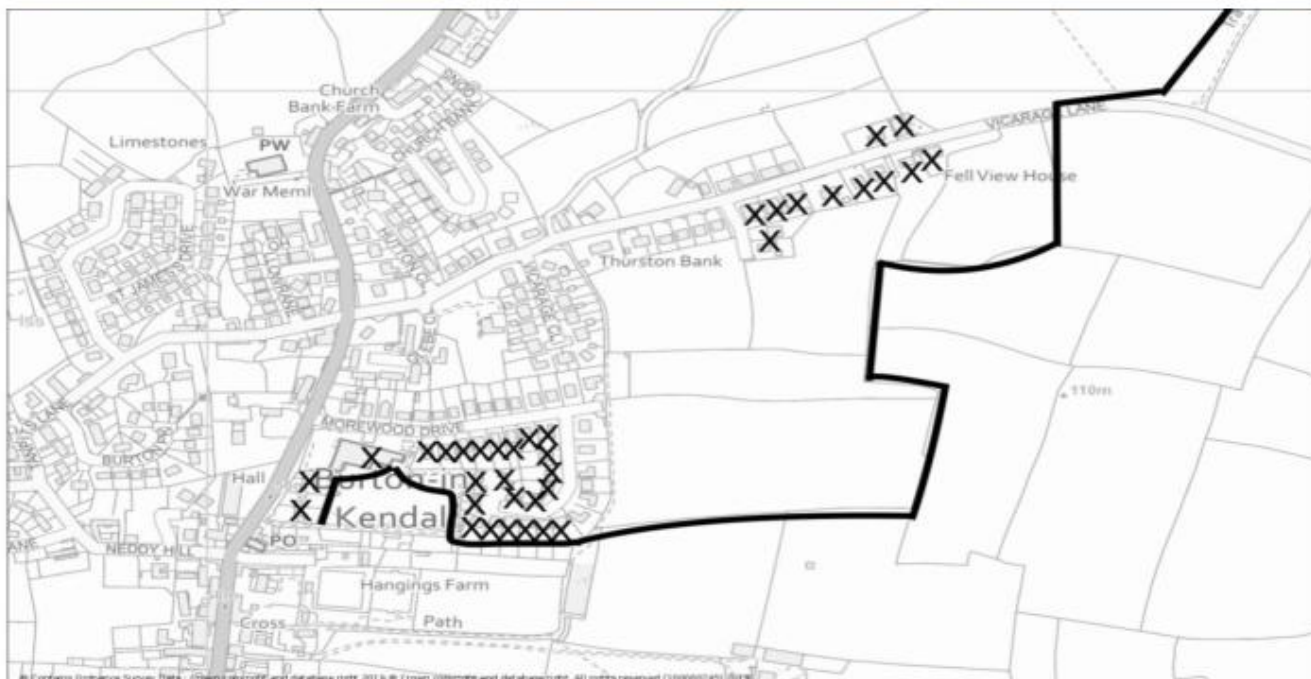


Black line on map below shows the first core route, any properties with 'X' over them are eligible for a B4RN connection.

Our village volunteers have been working hard digging & laying conduit into household back gardens on the head end route (directly off the school fields)

To volunteer or for more information about connection email b4rn4burton@gmail.com

To help us complete this valuable community project, we need your investment in this project to help us keep building. See www.b4rn.org.uk/invest (5% interest paid).





Leaflets · Flyers
Brochures
Banners · Posters
Stationery
Logos · Reports

15 years' industry experience and
based in Burton. Portfolio on website.
Call: Maxine Allison on 07913 377 210

www.ticktock-design.co.uk

Hartland House (Abbeyfield) Milnethorpe - Residential Care Home

For more info please ring : 015395 62251 or
email : abbeyfield@hartlandhouse.co.uk
www.hartlandhouse.co.uk

31 en-suite bedrooms
24 hour staff cover
Home Cooked Meals
Entertainment &
Activities



Burton Tennis Club



Junior coaching every Monday afternoon
from 4pm from 29th April 2019
BOOKING ESSENTIAL!
Contact: Annabelle on 07513168173
email: tennisbelle@hotmail.com

Tuesday 6-8pm Club Night
Friday 10am - Noon Social Tennis
www.burtontennisclub.co.uk

See us online with colour photos!

Burton News Website

www.burtonnews.org.uk

Junction 36 Photo Club For the Lakes & Dales



*Winners of the South Lakes Knockout
Competition, 2012, 2013 and 2014*

Subscriptions 2018/19
Membership £35.00
Joint Membership £60.00

4th October 2019
Summer Open Judge Jon Brook

11th October 2019
Equipment and photojumble evening,
Wilkinsons stand

18th October 2019
Lecture One - Gerald Chamberlain
"My world in B/W & Infrared"

For more information visit
www.holmeps.co.uk or call
01539 564345 / 01524 241964



Dalton Hall Business Centre Burton-in-Kendal

Meeting Room Hire

All Enquiries 07881 930139
offices@daltonhall.co.uk
<http://www.daltonhall.co.uk>

DIGITAL TV AERIAL AND SATELLITE FROM NBC-SKYNET

tel 07710 400 499
or 015395 62561

LOCAL- PROFESSIONAL- RELIABLE



Burton in Kendal Art & Craft Society

Monday Craft Group
14 October 1.30pm - 4pm

Weekly Art Group
Friday 9.30 am - 12 noon

*Both in club room BMH, with occasional
tutors*

*Members £3. Visitors £5
(when a tutor present)*

*Subscription £10 p.a. includes
3 workshops and 3 demonstrations per year*

Saturday 26 October

10am - 4pm

Patrick Corbett

Chisel Point Graphic/Charcoal
(Booking Essential - Members Only)

Contact for Info:
Kath Hayhurst: 01524 781613 or
Paula Firth 07895 646118

www.burton-in-kendalartandcraft.weebly.com

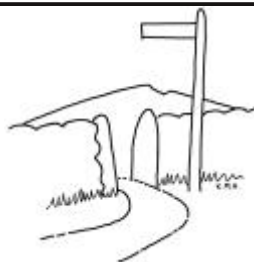
Table Tennis

Each Thursday the Table Tennis Club hold two sessions.

Session 1 is for youngsters at 5.15pm till 6pm, this will be coaching. Bats and balls supplied. £1 per week

Session 2 is for anyone who wants to give Table Tennis a go, no matter what standard. 6pm till 7pm. Bats and balls supplied. £2 per week.

Enquiries to Martin on 07740 933463.



Burton Fellwalkers Walks

Sunday 6th Oct 1.00pm
Clapham 6mls Kath Kirkman
Moderate

Wednesday 16 Oct 1.00pm
Deepdale ***** John Jones
Easy

Saturday 19 Oct 8.30am
Rusland Round 10mls Dougie Bell
2500ft of ascent
Hard

All walks:
Meet in the Memorial Hall car park
*** less than 5 miles at a gentle pace

Visitors £2.00
Membership £8 from Jan 1st yearly

More info from the secretary,
Kath Kirkman, on 781245
or visit our website:

<http://fellwalkers.burtonweb.org.uk>

LADIES BADMINTON

Ladies Badminton meets in the BMH every Tuesday from 1.30pm - 2.30pm. If anyone would like to join the group please ask for more details from Stephanie Micklethwaite on 781073.



Fully Qualified Childcare Staff

For Pre-School Children
Aged 3 months To 4 Years

Open daily Monday to Friday 7.30am - 6pm

Mobile Childcare Services available
For weddings, christenings, parties etc

SPOTTED DOG CHILDREN'S CENTRE
CLAWTHORPE HALL BUSINESS CENTRE
Tel : 01524 784321



Heron Theatre Beetham

Registered Charity No. 501134

Friday 4 October 7.30pm
Searching

2018 [12] 1 hour 38 mins

Director: Aneesh Chaganty
Cast: John Cho, Debra Messing,
Joseph Lee

After David Kim's daughter, Margot, goes missing a local investigation is opened and a detective assigned to the case. But when, after 36 hours, there are still no leads David decides to search in the one place no one has yet thought of looking – his daughter's laptop.

A taut modern mystery-thriller with a powerful emotional content told via the technology that most of use every day to communicate with others. David must trace his daughter's digital footprint if has any hope of finding her.

Arts Society Lunesdale

Formerly the Lunesdale Decorative & Fine Arts Society

Tuesday, October 15, 2019 - 14:15

The Importance of Living up to One's
Teapot: Collectors and Critics through
the Ages

Mr Lars Tharp

Yealand Indoor Bowling Club

Yealand Village Hall

Mondays 1pm – 4pm

Enjoy an afternoon of short mat bowls.

All equipment provided including tea,
biscuits and good company.

£2 per session

For more information contact
Les 01524 781784

Friday 1 November 7.30pm
Shoplifters

2018 [15] 2 hours (Japanese with subtitles)

Director: Hirokazu Koreeda

Cast: Lily Franky, Sakura Andô, Kirin Kiki

Osamu and his family are a dysfunctional band of outsiders living 'below the radar' on the fringes of Japanese society, supplementing their income with some petty thieving.

After one of their shoplifting sessions Osama and his son come across a little girl, apparently abandoned, and decide to take her home to join the chaotic household. They appear to be one big happy family living in a tiny house belonging to the grandmother, but when the son is arrested secrets are revealed testing the bonds that unite them.

Runner-up as best foreign film at 2019
Oscars.

Doors open 6.45pm. Shows start 7.30pm.

24 hour booking: tel: 015395 64283

book online: www.theherontheatre.com

or pay at the door

Non-members - £12 Members - £10

U18s - £5 Film £5

Scottish Country Dancing Class
at **Storth Village Hall**; Tuesdays
7.30 – 9.30, first class September
10th.

Beginners and experienced
dancers welcome to this friendly
class with expert tuition. No
partner necessary.

Enquiries to the Secretary
Rosanne Sagar 01524 770723
rosannesagar@hotmail.com



Girlguiding UK
girls in the lead

Burton in Kendal Rainbows Brownies & Guides

If you or your daughter would like to know more about joining or volunteering please call 0800 169 5901 or visit www.girlguiding.org.uk/interested

GUIDES HAS SPACES NOW!

Circuit Training

Mondays 7.00 - 8.00pm

Burton Memorial Hall Main Hall

Wednesdays 7.00 - 8.00pm

H I I T

Burton Morewood School Hall

Fridays 6.15pm - 7.15pm

Burton Memorial Hall Reception Room

*Improve your Strength & Endurance
Cardio-Vascular System
Body Composition & Flexibility*

For further info call John 01524 781707

Ballet Be Fit

Dance inspired shaping & exercise class
Great toning and strengthening

All welcome

no previous ballet experience required

**Every Tuesday 8pm - 9pm
The Gatehouse, Tanpits Lane**

Still only £40 for a 10 week block of lessons

**For further info contact
Laura Sandham 07876 794205
or Annwen Sisson 07785 954525**

THE BOYS' BRIGADE
> the adventure begins here



**1st Burton-in-Kendal Junior Section
meets on Thursdays 6.30pm-7.30pm at
Burton Morewood Primary School**

Come along!

For more info, tel. 781445

HOLME SOCIAL CLUB

Tel: 01524 781936

Fri. 18th Oct

'Craic @ Club'
(Acoustic Evening)

Sat 26th October

STUART MICHAELS

Great Entertainer

Members £2 Non Members £4

*Come along for a game of darts, pool,
domino's or snooker.*

*We have teams that play in local leagues on
a Sunday (pool). Darts on a Tuesday
(Ladies) and Thursday (Ladies & Gents)
If you need somewhere for a party, meeting
or fundraising event look no further*

*Opening Times: Sun. – Thurs. 8p.m –
11p.m. Fri & Sat. 8 – 12*

*Entertainment Nights open at 7.30 p.m.
Wednesday Keep Fit 7.30 – 8.30 p.m.*

Cancer Care Cafe

Last Friday of every month
at Slynedales, Slyne Rd, Lancaster
(beside Beaumont Bridge)

**Open for Tea and Coffee
10.00 am - 12 noon**

Free Parking. Everybody Welcome!

Further details from 01524 381820

Burton Village Store & Post Office

Opening Hours	Shop	P.O.
Monday - Friday	6am - 6pm	9am - 5.30pm
Saturday	6am - 6pm	9am - 12.30pm
Sunday	7am - 12noon	Closed

We now stock items from more local suppliers

Burrows – Bacon & Sausages
Dew-lay – Cheeses
Diggles – Cooked Meats
Greenhalgh's – Bread, Cakes, Cream Cakes, Pies
James Baxter's – Potted Shrimps
Kendal Jacksmith's – Flapjacks
Sue Prickett – Marmalade & Chutneys

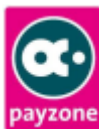
Fresh Vegetables Daily

(orders taken - please enquire)

And our Greek specialities

Award winning Greek Olive Oil

Other Greek Products: Balsamic Vinegar, Dolmades
 Greek Yoghurt, Gigantes, Houmous, Olives, Tapanade
 and now Greek Wines.



01524 781828

ROBINSON READ School of Dance



Children accepted from 2 and a half years onwards

Highly reputable, well established and successful

Fully qualified teaching faculty OFQUAL

Registered with the British Ballet Organization

DBS certified and First Aid trained

Ballet, Modern, Tap, Jazz, Acrobatic Work

01524 422450 or 413404 or 812143

www.robinsonread.co.uk

Jan's Pantry

Mobile Outside Catering for all Occasions

Barbecues • Weddings • Christenings • Parties etc.

A fully qualified cook at your fingertips



For enquiries call

01524 781904 or

07855 202124

*Your Celebration Cakes
can be done too*



Telephone: 01524 782476
01539 722594

DAYLUM LTD

**General Building, Plastering, Slating,
Ceramic Tiling**

Partners:

M A Wilson, 19 Morewood Drive, Burton
J Swindlehurst, 9 Bowland Drive, Kendal



Burton Morewood Nursery

at Burton Morewood CE Primary Academy
Nursery and National Teaching School

Main Street, Burton

Opening Hours. 8.45am - 3.15pm Monday to Friday

Sessions

8.45am - 11.45am morning

11.45am - 12.15pm lunch

12.15pm - 3.15pm afternoon

Contacts: Tel: 01524 781627

Pure Essence Beauty Salon

Open to Non Members

Specialising in Waxing, Massage, Facials,
Wedding Make Up, Shellac plus lots more

Please call Sue Shields on

01524 735240

& mention Burton News to receive a 10%
discount



South Lakeland Leisure Village



Holme Works Handyman



Nobody likes doing homework so let
Holme Works do it for you!

All Household & Garden work undertaken:

Household: Painting - internal & external work;

Gutters - cleaning, painting & repairs;

Pressure washing - walls, pathways, paving, decks
& fencing;

General household repairs (non structural); Flat-
pack assembly.

Give Neil a call on 01524 782177 / 07712 475863

Milnthorpe Library Opening Hours

Monday: 2pm - 6pm

Tuesday: Closed all day

Wednesday: 2pm - 6pm

Thursday: Closed all day

Friday: 10am - 1pm & 2pm - 5pm

Saturday: 10am - 12.30pm

Phone no: 015395 63040

email: kendal.library@cumbria.gov.uk

Phone ahead before visiting in case of unforeseen closures.

Age UK South Lakeland BURTON LUNCH CLUB

The Burton Lunch Club meets on the 2nd Wednesday of every month in the Kings Arms, Burton.

The club is open to anyone aged 55 or older. To join the club and book your lunch please contact Mrs Margaret Prady on 01524 781195.

Meals on Wheels

This service has been available for many years and offers 3 meals a week, on a permanent or temporary basis, delivered by a group of dedicated volunteers, all resident in Burton.

If anyone would like further information on the service please ring Stephanie Micklethwaite (Co-ordinator) on 01524 781073.

Burton in Kendal Parish Council

Meetings

**3rd Thursday of every month
7.30pm in the Memorial Hall**

Meetings:

Members of the public are always welcome to observe. Each meetings includes an OPEN FORUM where parishioners may raise matters of concern to them.

Planning applications:

Parishioners are asked to ensure they notify the PC as well as the planning authority of any comments or objections they have about any planning application within the parish.

Website:

Documents relating to the PC may be downloaded or read online here: www.burton-in-kendal-pc.gov.uk

For further information, contact:

The Clerk - Christine Davidson on 01524 782694

Next Meeting:

The next Parish Council Meeting will be on **Thursday 17th October 2019 at 7.30pm** in the Burton Memorial Hall.

Burton Education Foundation is short of applicants.

Grants are available for young people aged between **16 and 25 years** who live in the parishes of Burton-in-Kendal, Beetham and Arnside, Cumbria.

Grants are to help with the extra costs of attending college, university or apprenticeships.

More info at <https://grants-search.turn2us.org.uk/grant/the-burton-in-kendal-educational-foundation-13850>.

Add your village event to our back page listing!
email us with the details... editor@burtonnews.org.uk

Burton-in-Kendal Voluntary Car Scheme

If you need transport to hospital, doctor, dentist, optician etc please contact Lynne Herd on 781905. When she is away please contact Peter or Kathryn Smith on 782198. (If you could spare some time as a driver you would be most welcome, please contact Lynne or Peter for details.)

Child Health Clinic

1st Wednesday of each month

10.00 -11.00 am

No appointment necessary

Health Visitor: Shirley Bennett

015395 64887

OUT OF HOURS PHARMACY SERVICE

Ash Trees Pharmacy

Market Street, Carnforth

Monday to Friday 7am to 11pm

Saturday 8am to 6.30pm

Sunday 8am to 6pm

Tel: 01524 727877 - Fax: 01524 730421

Useful Phone Numbers

Burton News Editors	07860 756385
Burton Post Office	01524 781828
Morewood School	01524 781627
Burton Nursery	01524 781627
Dallam School	015395 65165
QES, Kirkby Lonsdale	015242 71275
CrimeStoppers	0800 555 111
Police non-emergency	101
Kendal Library	01539 713520
Kendal Hospital	01539 732288
Lancaster Hospital	01524 65944

Council Switchboards

Cumbria CC	01228 606060
South Lakeland DC	08450 504434

Civil Registration Services Births, Marriages, Deaths

Registration of Births and Deaths is overseen by the Kendal Registrar's Office, based in County Hall, Kendal. Telephone 0300 303 2472 or email registrationservice@cumbria.gov.uk

Registrations may also be undertaken at Milnthorpe and Kirkby Lonsdale Libraries by appointment only, contact the Kendal Office to arrange an appointment. To arrange a marriage contact the Kendal Registrar. Opening times Mon - Fri, 9.00am to 4.30pm.

SLDC Recycling Information



Andy Vickers

Customer Contact Centre

on **01539 733333**

or by email to:

recycling@southlakeland.gov.uk

Waste Collection Dates

[www.southlakeland.gov.uk/
bins-and-recycling/collection-calendar/](http://www.southlakeland.gov.uk/bins-and-recycling/collection-calendar/)

Cumbria County Council Highways Hotline

0300 303 2992

to report road, lighting or pavement problems

HELPLINES & LINKS

BULLYING: 0808 800 2222

www.bullying.co.uk (at work, school, online)

www.kidscape.org.uk (childhood)

CHILDLINE: 0800 1111 (under 18's)

NSPCC: 0808 800 5000

www.nspcc.org.uk (children at risk)

SAMARITANS: 116 123

www.samaritans.org

SHELTER: 0808 800 4444

england.shelter.org.uk/ (homelessness)

STONEWALL: 0800 050 2020

www.stonewall.org.uk (LGBT+)

ADVANCE DIARY DATES



Sunday 6th October. The Onion Show 1.30 Start - The King's Arms

Monday 7th October. Book Drop/Coffee Morning 10.00 - 11.00am - BMH

Wednesday 9th October. Lunch Club. 12pm - The King's Arms

Saturday 12th October. St. James' Boon Day. 10am - 1pm - St. James' Church

Wednesday 16th October. Burton Sports & Recreation Trust AGM 8pm - BMH

Monday 21 October. Book Drop 10.00-11.00am -BMH

Sunday 27th October. Crafters Stashbuster Sale. 10.00am -16.00pm - BMH

Thursday 31st October. Cinberbarrow Railway Halloween Special. From 5.30pm

Thursday 31st October. Wildlife Talk 'On Our Doorstep' Bryan Yorke. 7.30pm - BMH

**BMH = BURTON MEMORIAL HALL
BMS = Burton Morewood School**

**BSC = Burton Sports Committee
BRT = Burton Recreation Trust**

DALTON self storage

- Indoor containerised storage
- Easy Access
- Well Lit
- Secure

Tel. 01524 782442
Burton-in-Kendal

D.A.BELL LTD

Plumbing & Heating Engineer
Gas, Oil & LPG Installation, Repair,
Servicing & Maintenance

Bathrooms Fitted & Tiling

Gas Safe Reg No 92436
OFTEC Reg No C3883

Tel: 01524 781973
Mob: 07831 231492