

BURTON NEWS

THE VILLAGE NEWSLETTER

December 2024 Issue 353



CONTENTS

Editorial 2-3

Society Reports 4 - 5

Hall News 6 -7

Skies over Burton 10-11

It's A Date in Burton - 12

School report 15

Post office and Shop 16-17

A Christmas Story 18-19

Vicar's letter 20 -

Church Services 21 - 22

Club Information 24-25

BURTON NEWS

Please send us your letters - articles - events - news - stories - recipes etc for publication

**Drop them into The Village Store,
Main Street, Burton**

or send by e-mail to

burtonnewseditor@gmail.com

**Next Editorial Committee Meeting
21st January 2025**

**LAST DATE FOR COPY
20th January for February issue**

Burton News Information

Editor: Stuart East

Treasurer: Clive Horsford

Distribution Mgrs:

Paul & Mary Bullimore

burtonnewsdistribution@gmail.com

Editorial Committee Members:

Joan Barkley

Margaret Carr

Maura Dooré

Kath Hayhurst

Hazel Parker

Frances Roberts

Jenni Ross

Burton News is published monthly between February and December (11 issues p.a.) and distributed by a team of volunteers.

Online version:

www.burtonnews.org.uk

or our Facebook Page 'Burton News'

Contact the Editor via email:

burtonnewseditor@gmail.com

EDITORIAL

Welcome to the December edition of the Burton News.

This is my first edition as new editor of Burton News. I would like to thank Fiona and Matthew for their efforts as editors over the last 3 years. They have done a fantastic job keeping us informed and entertained during their stewardship of the newsletter and I hope that I can continue their good work. I would also like to say a personal thank you for the help they have given me in learning about the role of editor, and helping me to overcome many technical issues in producing it. I would also like to extend my thanks to Clive Horsford who is stepping down as treasurer, and Jenni Ross who is leaving the committee. Their efforts to maintain the newsletter are much appreciated.

I hope that you enjoy this month's edition. Kath Hayhurst has written Part 5 of her history of the Royal Hotel which covers the 20th Century, and Kath would welcome any memories that villagers have to help fill in the blanks. There is a Christmas story from Judith Pilkington. She wrote a story earlier this year, called 'At the Bus Stop' and this is a sequel with a festive theme, which celebrates the friendliness of our village.

There is an update from Burton Morewood School, where pupils have been engaged in a lot of fun activities recently, and are gearing up for a busy festive period.

Please would readers note that letters & articles must include a valid name & address. This can be withheld from publication on request. We will not publish any anonymous letters, or material which, in the opinion of the Editorial Committee, is of an offensive or defamatory nature. BN reserves the right to edit letters & articles in the interests of magazine space.

I am also delighted to bring news of a welcome return of the Burton Singers for a concert in December; along with a number of other village Christmas events. Burton Singers 'Songs For a Winter Night' takes place at 7.30 pm Saturday 14th December, Tickets £12 from Burton Village Store cash sales only. There is a list of Christmas services at the church and also a letter from the Vicar.

There is information about the coffee mornings in the Memorial Hall in December and January, details about the last quiz of the year at the Kings, as well as Carols at the Kings, the children's Christmas party and the Ceilidh to look forward to in January. So much going on for us all to get involved in.

Gill & Akis have produced their usual helpful reminder of the last posting dates for the UK and information about the shop opening times over the festive period. There is another fascinating column from Steve Thexton on the night skies, and an update about the swift count for 2024

I am very keen to hear any ideas for content that you would like to see in future editions of the newsletter. If you are part of a community group that we have not heard from, or if you have an interest that you would like to share with the community then I would love to hear from you. If you would like to write a regular or occasional column send in your ideas. We do still have a vacancy on the committee of Burton News, so if you would like to get involved in shaping the newsletter in the future, please do get in touch.

Stuart

Burton Memorial Hall
CHRISTMAS
COFFEE & CAKE
MORNING
in aid of Hall funds

Saturday 21st December
10am - 11.30am



Burton Memorial Hall is a charity registered in England & Wales, no. 505018

Burton Memorial Hall
COFFEE & CAKE
MORNING
in aid of Hall funds

Saturday 18th January
10am - 11.30am



Tool, Knife & Scissor Sharpening
by Kingsharp in the car park
10am-12noon

Burton Memorial Hall is a charity registered in England & Wales, no. 505018

BURTON VILLAGE STORE - NORMAL
OPENING HOURS

Monday - Friday
 Shop: 6am - 5:30pm
 Post Office : 9am - 5.30pm
Saturday
 Shop: 6am to 5:30pm
 Post Office: 9am to 12:30pm
Sunday
 Shop: 7am - 12 noon
 Post Office: Closed

The views expressed within Burton News are not necessarily the views of the Editors or the Editorial Committee

Swift Count 2024

This year, for various reasons, weekly swift counts were not carried out. Casual observations suggested that fewer swifts were seen in the village than normal. However, in the absence of regular and patient observations, a comparison with previous years is not possible.

Swifts were seen entering sites at North View, Cocking Yard, front of Royal Cottage and the gable of No1 Oak Court. In total 9 sites were seen to be entered.

The highest number seen in the sky was 30 in June and 20 in July. This is similar to previous years.

Burton Singers - 'Songs for Winter Night'



Burton Singers annual Christmas Concert will take place on **Saturday 14th December at 7:30pm** at Burton Memorial Hall.

Tickets will be available from Burton Village Store from the start of December.

Join us in a warm welcoming space to take in a feast of Songs For A Winter Night performed by the Burton Singers with the programme and arrangements being put together by the magnificent team of Val Still and Stuart Wicks. Enjoy a glass of something from the bar (each concert ticket entitles you to a free drink).

We look forward to welcoming you there.

Burton, Holme, and District Local History Society

Monday December 16th - Indoor Meeting - 7.30pm BMH

"John Weston of Enyeat, Endmoor" - Peter Williams

Monday January 20th - Indoor Meeting - 7.30pm BMH

**"Samuel H.Haslam of Heversham, Gentleman & Naturalist."
Prof.Ian D.Hodkinson.**



Visitors welcome

A full programme is available on the website
www.localhistory.burtonweb.org.uk

Contact: Chairwoman and Programme Co-ordinator Kath Hayhurst.
Tel. 01524 781613 email kathhayhurst84@gmail.com

Burton-in-Kendal Art and Craft Society For Demonstrations, Exhibitions, Talks and Workshops



Craft Group meeting Monday 9th December 1.30pm to 4pm BMH
and Monday January 13th 1.30pm to 4pm at BMH

The Art Group will meet each Friday 9:30am - 12 Noon BMH
The cost is £3 per session for members and £5 for non-members

Workshop - Saturday January 25th at BMH ,10.00am to 4.00pm, 'Creating Pictures
using Graphite & Ink 'with Helen Thompson (members only)

To join the Society contact the Treasurer Paula Firth.
Tel 01524 571997, email p.c.firth@ hotmail.com or mobile:07488 328464 or

Chairwoman Kath Hayhurst
Tel:01524 781613 or email kathhayhurst84@gmail.com

Membership includes free programme events, free art and craft entries to the
exhibition and use of the Society library.

Burton Fellwalkers

Burton Fell Walkers aim to do three walks each month,
except in December, when we have one festive outing.

New walkers are always welcome, come and join us!
Contact our Secretary Sarah Walker via the website
<http://fellwalkers.burtonweb.org.uk> or on 01524 923528.



December & January walks are as follows:

Sun 1st Dec - 1pm - Mince Pie Walk - Farleton Knott 5 miles (8km) Easy

Wed 1st Jan - 10am - School Knott - 6.5 miles (10.5km) (Easy/Medium)

Sun 5th Jan - 12 Noon - Conder Green/River Lune - 6 miles (9.6km) (Easy/
Medium)

Wed 15th Jan - 10am - Silverdale - 5 miles (8km) (Easy)

Sat 25th Jan - 9am - Loughrigg - 6.5miles (10.5km) (Medium)

Photographs and reports from some of our walks are available via the Society
website in the 'Gallery' section. We also aim to include a report of a walk in
Burton News when possible.

News from Burton Memorial Hall

Firstly a huge thank you to everyone who came along and supported the hall's annual Christmas Market in November, which raised over £700 for hall funds, it was a super day and we had lots of positive feedback from our stallholders.

We are now into the Christmas Bingo season at the Hall, with three more dates for your enjoyment to come:

Thursday 5th is in aid of Burton Sports Committee,
Friday 13th is in aid of Burton Memorial Hall and Burton Drama,
Friday 20th in aid of Burton Thistle FC.

Doors for all will open at 6.30pm, eyes down at 7.30pm, and will have great prizes on offer.

Also coming up this month is our mid-monthly coffee morning on Saturday 21st December, 10am until 11.30am at the Hall, with an assortment of delicious home-made cakes, and at which we will have tickets on sale for the Burns Night Supper and Ceilidh (Friday 24th January), and the Celebration of Simon and Garfunkel music night (Saturday 22nd February). The first mid-monthly coffee morning of 2025 will be on Saturday 18th January, 10am-11.30am, and we should have Kingsharp in the car park to sharpen your blunt things again.

Our Warm Welcome Wednesdays are continuing every Wednesday except 25th December and 1st January, thanks to generous grants from the Holebird Trust and the MOTO Charity Trust, in the Reception Room at the hall from 12.30pm until 4pm, with a hot lunch at 1pm each week, and hot drinks all afternoon. Why not pop in and say hello.

Anne Nichols, Chair of the Management Committee

Burton Book Drop & Coffee Mornings

**The Coffee Morning & Book Drop
will be on Monday 2nd December 2024
and Monday 6th January 2025**



The Drop Coffee morning is held in BMH on the first Monday of each month (unless it's a bank holiday) from 10.00 to 11.00. All proceeds go to help the upkeep of the Hall. This is an opportunity to come and have a coffee, cake and a chat, buy a second hand book and use our Book Drop. The Book Drop is a community library service provided by Westmorland & Furness Council but manned by village volunteers.

BURTON MEMORIAL HALL 200 CLUB

Below are the results for the OCTOBER 2024 200 Club draw.

FIRST PRIZE	£28	E.A. GOTT
SECOND PRIZE	£16	M.L. SCOTT.
THIRD PRIZE	£11	L. JACKSON

Anyone wishing to join the 200 Club,
please contact Katy Worsley on bmh200club@outlook.com
Or call 07946 617634

Cost £12 per number for a year (12 draws)

Why not buy a year's subscription to the 200 Club for £12 as a birthday gift for a family member or friend? If you already have a number, why not buy another and increase your chances of a win?



THE BIG CRISTMAS QUIZ NIGHT AT THE KINGS

- **Leaderboard Winners Announced!**
Prizes for First, Second and Third!
- **Booby Prizes for Last Place!**
- **Raffle with Excellent Prizes!**



**WEDNESDAY 11TH
DECEMBER
STARTS AT 7.30pm**



Final One Of The Year!



TEAMS OF UP TO 4 £1 EACH



CAROLS



AT

THE KINGS

Wednesday 4th December

7.00pm



**All welcome, bring your family &
friends for a good old village sing
a long!**



Kings Arms, Burton In Kendal, LA6 1LR



CHILDREN'S CHRISTMAS PARTIES

FREE FOR CHILDREN FROM BURTON-IN-KENDAL

**DECEMBER 8TH
MEMORIAL HALL**

**2 HOURS OF FUN, GAMES, ACTIVITIES AND TREATS!
PARTY FOOD PROVIDED!**



**UP TO YEAR 2 - 2-4PM
INCLUDES A SANTA VISIT**

YEARS 3 TO 6 - 5-7PM

NO NEED TO BOOK, JUST TURN UP!



Night Skies over Burton

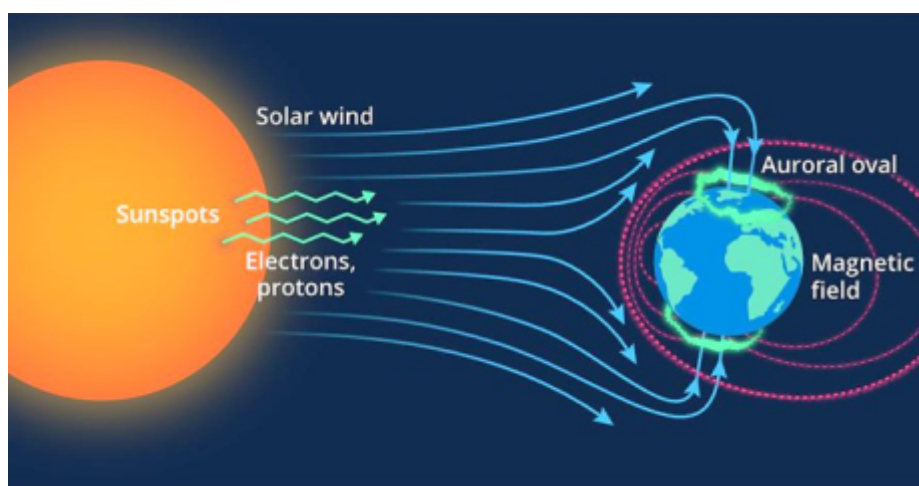
Some wow behind the recent wow

Hello again for this edition of night skies over Burton. This month is a little different from the normal but still very much connected with the recent enthusiasm over the significant instances of Aurora Borealis displays and a recent episode of Desert Island Discs! So, you may well ask, what has Desert Island Discs got to do with our night sky here in Burton?

The guest was Dr Nicky Fox, only the second woman to hold the post of Head of Science at NASA since the agency was founded in 1958. Nicky was born in Hitchin in Hertfordshire and her father introduced her to the wonders of space when she was just a few months old. Years later, after completing her PhD she took up a post-doctoral fellowship at NASA's Goddard Space Flight Centre in Maryland. In 2010 she became the project scientist for the Parker Solar Probe, humanity's first mission to a star, which launched in 2018 and is still flying through the sun's atmosphere collecting data. More on this later. As well as being a wonderful example for women leading the way in science, it was an interesting and at times very moving look into her life and it got me thinking – how do we know there may be an aurora visible? Especially now so many of you seem to be receiving the aurora alerts from social media posts – where does this come from?

Most of the Apps are using links to Lancaster University or directly to NOAA and its National Environmental Satellite, Data, and Information Service. Some of this information comes from terrestrial based (such as at Lancaster) instrumentation telling us it is happening there and then, but more recently the science community has been getting a metaphorical 'heads up' that something may well happen in a few days' time – space weather forecasting.

The Aurora is an incredible light show caused by collisions between electrically charged particles released from the sun's atmosphere that enter the earth's atmosphere and collide with gases such as oxygen and nitrogen. Auroral displays can appear in many vivid colours, that are a result of different gas particles colliding in the upper atmosphere.



mission to “touch the Sun,” NASA's spacecraft to fly through the corona with every orbit bringing it closer, the probe will provide humanity with unprecedented views of the Sun up close. It is hoped the probe will return to the Sun. The probe has four instruments: a magnetometer, and energetic particles, and is gradually orbiting closer to the Sun's orbit of Mercury. Close to the corona, the probe is making measurements and images to study the structure of solar wind. It also makes measurements in the space environment that affect Earth. Over half a tonne the space craft is orbiting the Sun within about 3.9 million miles of the surface where temperatures reaching nearly 6,000 degrees Fahrenheit, and, on Christmas Eve this year, will be traveling at 430,000 mph (or 191 km/s the fastest object ever in human history) a scientific and engineering feat. The mission is named after E. N. Parker, who pioneered our understanding of the Sun. A professor at the University of Chicago, he developed a mathematical theory that the solar wind is a flow of solar material from the Sun. The mission will spend the field time and again, answering fundamental questions about the workings of the Sun. He died March 15, 2022, at age 93. The mission to witness the launch of a new Solar Probe continues its mission. Parker first envisaged more than a

To leave, a quick credit to NASA, NOAA, NESDIS and Wikipedia and to wish you all a very happy and safe Christmas and a starry New Year.
Best wishes Stephen (BurtonAstro@gmail.com)

It's A Date In Burton: by Kath Hayhurst

THE ROYAL HOTEL, PART 5.

From In 1905 to 1912 Walter Wright was at the Hotel, and Posting was advertised. J. Heywood the Draper was next door.

Circa 1914 An Iron Bunch of Grapes is shown on a photograph, hanging over the front door. (see image below). This indicated that wine was available at the pub.

In 1921 a large sale was held at the Royal .The Property of W.A.Langdale Atkinson Esq. included, Oakwood, Leypitts and Sandy Gap farms, Burton House, Manor House, Garnett House, and several pieces of land.

In 1929 Mrs Ellen Robinson was the landlady.

In 1932 the Bowling Green opened on the land behind .

By 1939 Roger and Ethel Holme were the Hotel Proprietors. He was also a bus conductor.

From the 1940's - 1965 the Royal was said to have changed hands six times.

In the 1980's Les Bayley the landlord said there was a farm attached to the Inn with a wide archway into the Inn yard. He described the coachman's cottage with the old Cruck beams.

By 1985 the Dutton's sign was replaced by Whitbreads brewery

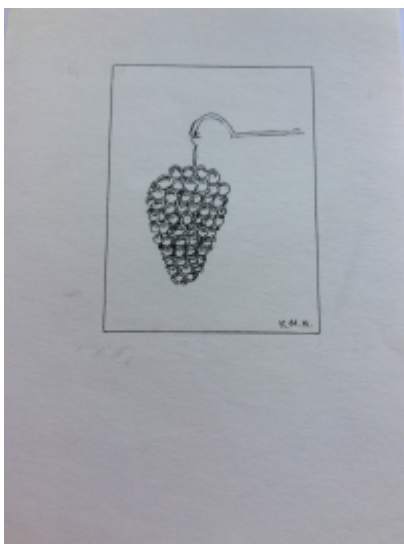
From 1966- 1986 Jack Orkney was the landlord. The sign hanging above the door was the Coat of Arms for the Duke of Edinburgh. (see below)

In July 1988 there was a fire at the Hotel. The Landlord was Gordon, and Eileen Brown. Sadly their son Peter died in hospital after inhaling the fumes.

By 2005 the Hotel had closed.

Many readers will remember other landlords I have not recorded, so please let us know their names and dates ,to help fill in the gaps.

Kath Hayhurst



Songs for a Winter Night

with

The Burton Singers



Burton Memorial Hall, Burton-in-Kendal

Saturday 14th December at 7:30pm

Doors open 7pm

Tickets from Burton Village Store

Tickets £12

Includes glass of wine or soft drink

Raising money for local charities



Gillinggate Pharmacy+

NHS

**FREE PRESCRIPTION
COLLECTION &
DELIVERY**

REGISTER
CALL US OR
USE OUR APP
OVERLEAF



We can **ORDER, DISPENSE** and **DELIVER** your Medicines direct to your door. All this **FREE** to make your life easier.

OPENING HOURS: 08:30-18:30 Mon - Fri

01539 720 461

www.gillinggatepharmacy.co.uk

**CAPTAIN FRENCH
SURGERY
GILLINGGATE, KENDAL
LA9 4JE**

BURTON MOREWOOD SCHOOL REPORT

This time of year is always a very busy one in school! Since we have returned from half term, the children have had visits from 'The Dog's Trust', our local table tennis club, and our brilliant 'Open the Book' team have been in school dramatising Bible stories for us. Year 5 have also started their skiing lessons, thanks to Mr and Mrs Thexton.

We've held a PTFA Bingo event and raised money for 'Children in Need', through a mufti day. Mr Burrows and our Year 6 children led a very poignant Remembrance Service and, as a school, we raised money for the Poppy Appeal.

In December there are lots of things for us all to enjoy. Our youngest children (EYFS) will perform their 'Carols around the Tree', Years 1-3 will share 'A Tale in Bethlehem' with us and Years 4-6 will hold our annual Carol Service in St. James's church.

Thanks to our PTFA, the whole school are off on a trip to see a pantomime (oh, yes we are!) and Mrs Fejes will be cooking her amazing Christmas dinner for us all, prior to the end of term. A range of other class trips/experiences are also planned.

As you can read, there is lots for us to enjoy and share. We will update you on the success of all of our festivities and events, after the Christmas break.

Wishing you all a peaceful, relaxing and enjoyable festive period.

All at Burton Morewood.

Art exhibition Opening Night 12th December

Local Landlord at the Kings Arms – James Swift – is keen to promote local art and crafts. As a keen arts fan he would like to support local artists where possible.

On 12th December 2024 – we are starting an art exhibition in the Kings Arms pub and restaurant. Local artist Derek Pye – who lives opposite the Kings Arms will be providing numerous examples of his work, as shown opposite.



It's that time of year again.....

A Note from the Post Office about Christmas Posting 2024

A leaflet with useful information will soon be available in the Post Office but the latest recommended posting dates are summarised below:

UK Mail

2nd Class	Wednesday 18 December
1st Class	Friday 20 December
Parcelforce Express48	Early on Thursday 19th December
Parcelforce Express24	Early on Friday 20th December
Special Delivery	Monday 23rd December

Remember that parcels sent outside the U.K. need to have a customs form attached, these are available at the Post Office Counter. Regulations have changed and we are now required to enter customs information at the counter. This is time consuming, please be patient with us.

It would be helpful to call in and collect a label so you can fill it in before you bring your parcel to post. Also remember to put your name and address on the top left hand corner of the front of your package; this will enable Royal Mail to return your item should overseas customs authorities refuse it entry into their country.

The usual reminder about size and weight for parcels sent abroad using Royal Mail.

The maximum total of (length + width + height) is 90 cm (approx 3ft) with the maximum single dimension of 60cm (approx 2 ft). Also, the maximum weight is 2 kg.

It is really easy to exceed these and then the parcel would cost a great deal more to send via Parcel Force. It is sometimes cheaper to split a heavy parcel and send two packets.

Gill.

Burton Village Store & Post Office

Opening Hours Christmas & New Year 2024/25

		SHOP	POST OFFICE
Mon	23 rd December	Normal Opening Hours	
Tuesday	CHRISTMAS EVE	06:00 – 13:00	09:00 – 12:30
Wednesday	CHRISTMAS DAY	CLOSED	
Thursday	BOXING DAY	CLOSED	
Fri - Mon	27 th - 30 th Dec	Normal Opening Hours	
Tuesday	NEW YEAR'S EVE	06:00 – 13:00	09:00 – 12:30
Wednesday	NEW YEAR'S DAY	CLOSED	
Thursday	2 nd January	Normal Opening Hours Resume	

A brief note from the Village Store & Post Office.....

2024 has proved to be a challenging year but once again we have made it through to Christmas with a great deal of support, willingly given, from our colleagues. As we approach the festive season, we would also like to thank our customers for their many good wishes throughout the year. We have been particularly touched by the many "Get Well" cards and flowers.

As always, if we can assist with your preparations for Christmas and the New Year, please ask.....

We will once again have "Hamper Bags" that can be filled with a variety of itemsGreek Olive Oil & Vinegar, locally produced "Stormy Bay" gins, Sue Prickett's unusual marmalades, fancy biscuits , "Alter/native" soaps & shampoo and Fluid Art Coasters made locally. The One-4-All Gift Cards and Amazon vouchers can be a quick solution to a difficult choice of present.

As usual we expect to have fresh produce available in the week before Christmas. If you would like to pre-order items, please contact us in early – mid December. Contact us on 01524 781828, or gill@burtonvillagestore.co.uk or of course pop in and speak to us in the shop.

We wish you and your family a joyful Christmas and a Happy New Year
Alison, Courtney, Fenella, James, Lindy, Melissa, Nigel, Tracy,

Gill & Akis

The Christmas Café by Judith Pilkington

"Check the SatNav, Clara," Dad ordered, straining his neck to peer down the dark lane. "I can't remember if it was Holly Cottage or Holly House, and there seems to be one of each."

obby, my little brother, was rocking perilously on his booster seat.

"It doesn't matter, Daddy. I can see Boris already!"

On the neat lawn of one of the cottages sat a terrier so small you could fit him in your Christmas stocking. It was Boris!

Last year, when our bus had broken down in Burton, a very nice lady had let us stay at her house, and Boris was her dog. After our meeting, my dad had swapped numbers with her and we had agreed to come up again to help her run a Christmas coffee morning for the people of the village. It feels strange to me, living in a place so small everybody knows your name and your favourite festive movie, but maybe that's because I'm so used to the big city.

Pulling into the tiny driveway, Dad waved to the lady, who had appeared on the doorstep.

"Hello dear!" she called, frantically waving a poo bag and ushering Boris into the house.

"Hello Margery," Dad said, heaving our suitcase out of the boot.

Margery dashed over to help, her white hair dancing frantically in the breeze.

"Fancy a brew? I'll pop the kettle on!" she said, before turning around, "Or should I make coffee to practise for tomorrow?"

We sat together around the kitchen table, eating home-made gingerbread biscuits as Dad sipped a coffee.

"This is wonderful, Margery. Will you be handing out the biscuits too?"

Margery nodded.

"Yes, they're very popular! Fred at number seven ate a whole plate full last year!"

Bobby was probably close to doing the same at the rate he was munching them.

"Do you know how many people will be at the coffee morning?" I asked, crunching on a candy cane.

"Well, Janice from the WI said she was, and I was talking to John at the Christmas bingo, he seemed keen... .. and Mary was chatting to me about it at the Christmas market, so she'll be taking Horace, I'm sure. Ahhh yes, and Tom at the history society took a leaflet!"

"Why did you need us then?" Bobby giggled.

Margery looked down at the floor and sighed.

"I was worried I might get a little lonely this Christmas, with just me and Boris." Boris yapped approvingly at the sound of his name.

“But now you’ve helped me realise what an amazing community we have here in Burton, and I know I won’t ever be lonely with Janice and John and Mary and all the rest. Nobody should ever be lonely in this village, there’s so much to get involved in and so many places to meet new people.”

As clambered into the car on Boxing Day, I thought about all the people we’d met at the coffee morning, and how keen they’d been to meet us. It really had been the best Christmas ever, and I suppose I had Burton and it’s lovely people to thank for that. I couldn’t wait to visit again!

Burton Memorial Hall presents a...

Burns Night

CEILIDH

Friday 24th January
Doors 7pm, Dancing at 7:30

£15/ticket
Includes

**Haggis
Neeps & Tatties**
plus
Pudding

Catering by Jan's Pantry

Band: Tattie Bogle
Soloist: Val Still

Tickets: £15
Numbers limited to 70 tickets

Tickets will be on sale at the Hall's
Christmas Market on 9th Nov
or from the Village Store in the New Year
or phone 01524 781306

Main Street, Burton-in-Kendal, LA6 1NA

Burton Memorial Hall is a charity registered in England & Wales no. 501928

Original poster design by MadFool Design, updated by Burton Memorial Hall

Vicar's Letter...

Food for Life

Dear Friends

Are you eating well? A lack of time, poor health or anxiety can all interfere with eating but even when we're taking in plenty of good food we can still be severely under-nourished! Quoting from the Old Testament Jesus reminds us that "Man does not live on bread alone, but on every word that comes from the mouth of God." (Matthew 4:4) Are you getting plenty of that food? Meals keep us alive and can bring great pleasure, but they cannot give us the abundant life that Jesus offers. Only by feeding on God's Word – the Bible – can we encounter Jesus, who is called 'The Word', and receive from him food that endures to eternal life. (John 6:27)

But where do you start with the Bible? It's a big book and we can easily get lost in its thickets. Knowing that many people have found a Bible reading plan to be very helpful in providing manageable portions to be consumed and enjoyed daily, I have written a new plan especially for our villages. The Westmorland Bible Reading Plan, as it is now known, gives readings for each weekday. It divides the Bible into four sections so you choose which you will consume first. Every chapter in the Bible is included so after four years (or sooner if you read more than one section at a time) you will have read every word in the Bible. Read alone or read with family or a friend. It will work with any Bible translation, it's a simple A5 leaflet (large-print also available), it's free of charge and the plan begins on Advent Sunday, 1 st December.

King David discovered that God's words were sweeter than honey (Psalm 19). Why not help yourself to some of this sweet and satisfying food? You can pick up copies by popping into the church (always open Friday and Saturday 10am – 4pm, and for services) or send me a message with your name and address and we'll deliver one to your home asap. Come, let's feast together!

And we also guarantee you a very warm welcome to any of our Christmas services and events. Details are in this newsletter and on our church website.

Happy Christmas!

Sincerely,

Graham Burrows

01524 781210 07740 622962

vicarburtonholme@gmail.com

Christmas in Holme and Burton

You are warmly invited to join us at our
Advent and Christmas services.

All ages welcome.

Advent Christingle Service

Sun 1st Dec 4pm in Holme

Candlelit Carol Services

Sun 15th Dec 6.30pm in Holme

Sun 22nd Dec 6.30pm in Burton

Family Nativity Services

Mon 23rd Dec 4pm in Burton

Tues 24th Dec 4pm in Holme

Christmas Day Family Service

Wed 25th Dec 10am in Burton

Keep Christ in Christmas

www.burtonandholmechurches.org



OTHER PLACES OF WORSHIP

Silverdale Methodist Church LA5 0RR
Rev. Emma Holroyd 01524 941266

St Mary's RC Church
Yealand Conyers
Father Peter Haughton 01524 732940
Times of Services can be found at
www.ololcarnforth.org.uk

Warton Methodist Church
www.wartonmethodist.co.uk
01524 732626

Yealand Quakers
01524 781501 / 782052 / 732336



St James, Burton & Holy Trinity, Holme

The Vicarage, Glebe Close, Burton

T: 01524 781210 M: 07740 622962

E: vicarburtonholme@gmail.com

W: www.burtonandholmechurches.org

Burton St James details

Warden: Brian Whalley 782296

Admin: Pat Whalley 782296

St James Church, Burton
 January 2025 Services
 Sunday 5 January
 11am Morning Worship with Communion
 Sunday 12 January
 11am Morning Worship
 Sunday 19 January
 11am Morning Worship with Communion
 Sunday 26 November
 10am Joint Morning Worship at Holme

You are very welcome to join us on Sunday mornings in St James Church. Our church website is www.burtonandholmechurches.org. Recent sermons can be watched or listened to on the 'Sundays' page. Service times can be checked under 'Coming Up' on the 'Welcome' page.

Open Church: The church is open to visitors every Friday and Saturday, 10am – 4pm. You are welcome to look around or to use the quiet to think or pray.

Services at our sister church, Holy Trinity Holme, are usually at 9am each Sunday.

St James Church Autumn Fair Coffee Morning

Thankyou to the many people who came along and supported this event. Also, thanks to all those who were on the many stalls including Homemade cards, Bric -a -brac, bottle stall, children's cup challenge, books, knitting, crochet items and cakes and those who in charge of refreshments.

Over £700 was made for church funds.

**A CELEBRATION OF
SIMON &
GARFUNKEL**

**PERFORMED LIVE BY
TIM CHU & IAN BAILEY**

AS HEARD ON
BIG RADIO

★★★★★
"Tim and Ian moved between harmonies and shared vocals like a gestalt entity, with all the vocal nuances, dynamics and phrasing that make S&G so unique while still finding their own take on the material. Absolutely first class"

★★★★★
"A stunning blend of observation, interpretation, and perfect vocal synergy"

£15

SATURDAY 22TH FEBRUARY
BURTON IN KENDAL MEMORIAL HALL
MAIN STREET • BURTON • CUMBRIA LA6 1NA
Doors 6.45/7.30 Start • Please BYOB

TICKETS ON SALE BMH Mid-Monthly Coffee Morning - Sat 21st Dec 2024
 BMH Mid-Monthly Coffee Morning - Sat 18th Jan 2025
 Or contact Anne on 01524 781306

Christmas

BINGO

Doors open 6.30pm
Eyes down 7.30pm

at Burton Memorial Hall

Thursday 5th December

in aid of Burton Sports Committee

Friday 13th December

in aid of Burton Memorial Hall & Burton Drama

Friday 20th December

in aid of Burton Thistle Football Club

Raffle Great Prizes Refreshments



Burton Memorial Hall is a charity registered in England & Wales, no. 505018



Burton Singers

A community choir based in Burton.
If you would like to join us then please contact
Val Still on 07799 246415



Burton Tennis Club

Welcomes new members www.burtontennisclub.co.uk
Social tennis / league matches
Enquiries - contact Jane tel. 07799105639
Or graham@burtontennisclub.co.uk



Fusion Fitness

Thursday 9.30 to 10.30 Burton Memorial Hall
Seated class Thursday 10.45 to 11.15
Contact Jan Abbott Mob: 07479524524
Email: janabbott9553@gmail.com



Pickleball

Mondays 10am to 12 Noon and 7.45pm to 8.45pm, Tuesdays 9.30-11.30am. Wednesdays 3pm to 4pm, Thursdays 7.15-8.15pm & Friday 9.30am to 10.30am. All sessions at Burton Memorial Hall £2 per hour. Ring Jeannie Christian 07967 940818 to enquire



Burton Bowling Club

Club night each Monday at 6.30pm at green during season.
Enquiries to Terry Bates on 07450 767149



Ladies Badminton

Every Tuesday in Burton Memorial Hall 1.30pm to 2.30pm
If you would like to join please contact Sue Humphreys 01524 781596, or just turn up! £2 per session



Burton Amateur Dramatic Society

If you would like to join us either Acting or Back Stage please contact
Chair. Bob Parker 01524781772
Secretary. Jill Evans 007704514972



Milnthorpe Angling Association

Fly fishing on the River Bela & environs. For membership information please contact: John McKay, tel 07704 265953 e-mail milnthorpeaa@hotmail.com



Table Tennis Club

Adults & Juniors meetings at Burton Memorial Hall
Thursday evenings - Autumn to Spring each year
Enquiries to Martin on 07740 933463.



Circuit Training + HIT

Mon 6.30pm / Fri 6.15pm Burton Memorial Hall
Wed 6.45pm Burton Morewood School
Contact: John 01524 781707



Burton Fellwalkers

At least 3 walks per month - of different grades. New members always welcome. To join please contact our Secretary: Sarah Walker 01524 923528
website: <http://fellwalkers.burtonweb.org.uk>



Scottish Country Dance Group

Meets at Storth Village Hall on Tuesdays 7.30pm to 9.30pm. Beginners welcome. Contact Ainslie Dunnett on 07708 654390 ainslie.dunnett@btinternet.com or Pauline Hampson on 07706 697306 paulinehampson2016@gmail.com



**Burton in Kendal
Art & Craft
Society**

Craft Group 2nd Monday of the month. Art Group Fridays
Workshop or Demonstration most months
Chair: kathhayhurst84@gmail.com Tel 01524 781613



**Burton, Holme
& District
Local History Society**

A year round programme of interesting talks & visits
Chair & Programme Secretary: kathhayhurst84
@gmail.com or 01524 781613
<http://localhistory.burtonweb.org.uk>



**Burton
Womens
Institute**

Meetings held at Burton Memorial Hall on 2nd Thursday
each month (except August).
To join contact Helena Nixon on 01524 781048



**Burton
Knit &
Natter**

Every Wednesday BMH Club Room - 6.30pm until 8.30pm. Open
to anyone to bring along knitting, crochet, tatting, embroidery etc.
or help in making postbox toppers or village yarn bombing. Cost is
just £2.00 per person per week incl. tea/coffee and cake.

Call for Advertisers

Do you run a company offering services to residents of Burton? If so, would you like to advertise with us? If you get this newsletter then you know it is distributed each month (except Jan) to all households in Burton, Dalton and Clawthorpe.

Our rates are very reasonable, starting at £66 for a 1/8th page advert running for 11 editions (we produce 11 editions each calendar year). You do not have to run your advertisement for a full year but just for those months that are most appropriate to your business. If you do take a full year's subscription then, as an introductory offer, we will double the size of your advert for the first month.

Please contact the editors on burtonnewseditor@gmail.com for advice and full information about our charges and advertising size formats.

MORECAMBE BAY FOODBANK

We are still collecting for the Morecambe Bay Foodbank, if you have anything you would like to donate please would you pop them into one of the collection boxes at 4 Drovers Way. Thank you on behalf of those who are in need of your help

Milnthorpe Library

19 The Square, Milnthorpe LA7 7QJ

Monday: 2pm to 6pm

Wednesday: 2pm to 6pm

Friday: 10am to 1pm & 2pm to 5pm

Saturday: 10am to 12.30pm

Telephone 015395 63040.



We are still expanding this community led project, if you would like to know more about this project please email b4rn4burton@gmail.com.

Mike Iddon & Martin Sansby.
Burton-in-Kendal B4RN Champions

Useful Phone Numbers

Burton News Editors	01524 936501
Burton Post Office	01524 781828
Morewood School	01524 781627
Burton Nursery	01524 781627
Dallam School	015395 65165
QES, Kirkby Lonsdale	015242 71275
CrimeStoppers	0800 555 111
Police non-emergency	101
Kendal Library	01539 713524
Kendal Hospital	01539 732288
Lancaster Hospital	01524 65944

Council Switchboard

Westmorland & Furness 0300 373 3300

Annual Gift Subscriptions

If you know of anyone who may like to receive BN regularly each month, why not buy them an Annual Gift Subscription? For £12 within the UK they will receive a copy of BN each month (11 copies per year). A great way for family, friends and former residents to keep in touch with what's happening here in Burton. Anyone interested should contact BN at the

Burton in Kendal Parish Council

Meetings

3rd Thursday of every month at 7.30pm
Members of the public are always welcome to observe. Each meetings includes an OPEN FORUM.

Planning applications:

Parishioners are asked to ensure they notify the PC as well as the planning authority of any comments or objections they have about any planning application within the parish.

Website:

Documents relating to the PC may be downloaded or read online here:
www.burton-in-kendal-pc.gov.uk

For further information, contact:

The Clerk - Christine Davidson on 01524 782694

Next Meeting:

The next Parish Council Meeting will be on December 19th 7.30pm BMH

OUT OF HOURS PHARMACY SERVICE

Ash Trees Pharmacy

Market Street, Carnforth

Monday to Friday 8am to 10pm

Saturday 9am to 6.30pm

Sunday 9am to 6pm

Tel: 01524 727877 - Fax: 01524 730421

Burton-in-Kendal Voluntary Car Scheme

If you need transport to hospital, doctor, dentist, optician etc please contact Lynne Herd on 01524 781905. The scheme is still operating but has a reduced number of drivers so if you can spare some time as a driver you would be most welcome. Please contact Lynne for details.

Recycling Information

Customer Services Desk on

0300 373 3300

or by email to:

customer.services3@westmorlandandfurness.gov.uk

Waste Collection Dates

[https://](https://www.westmorlandandfurness.gov.uk/bins-recycling-and-street-cleaning/waste-collection-schedule)

[www.westmorlandandfurness.gov.uk/
bins-recycling-and-street-cleaning/
waste-collection-schedule](https://www.westmorlandandfurness.gov.uk/bins-recycling-and-street-cleaning/waste-collection-schedule)

Civil Registration Services Births, Marriages, Deaths

Registration of Births and Deaths is overseen by the Kendal Registrar's Office, based in County Hall, Kendal. Telephone 0300 373 3300 or email registration.service@westmorlandandfurness.gov.uk

Registrations may also be undertaken at Milnthorpe and Kirkby Lonsdale Libraries by appointment only, contact the Kendal Office to arrange an appointment. To arrange a marriage contact the Kendal Registrar. Opening times Mon - Fri, 9.00am to 4.30pm.

Council Highways Hotline

0300 303 2992

to report road, lighting or pavement

HELPLINES & LINKS

BULLYING: 0300 323 016

www.nationalbullyinghelpline.co.uk (at work, school, online)

www.kidscape.org.uk (childhood)

CHILDLINE: 0800 1111 (under 18's)

NSPCC: 0800 800 5000

www.nspcc.org.uk (children at risk)

SAMARITANS: 116 123

www.samaritans.org

SHELTER: 0800 800 4444

england.shelter.org.uk/ (homelessness)

STONEWALL: 0800 050 2020

www.stonewall.org.uk (LGBT+)

BURTON VILLAGE STORE - NORMAL OPENING HOURS

Monday - Friday

Shop: 6am - 5:30pm

Post Office : 9am - 5.30pm

Saturday

Shop: 6am to 5:30pm

Post Office: 9am to 12:30pm

Sunday

Shop: 7am - 12 noon

Post Office: Closed



**You can contact Vicky Hughes as follows:
Westmorland & Furness Council:**

Burtlands

Station Lane

Burton-in-Kendal, Cumbria, LA6 1HR

Tel: 07785 923940

email:

Vicky.Hughes@westmorlandandfurness.gov.uk

Barton Tech Support

For all your computer needs

Desktops supplied / built to order /
upgraded / repaired

Laptops supplied / upgraded / repaired
Peripherals supplied / repaired if possible

Networks (wireless & ethernet)

Call Barry on 01524 781306

Email: bts@yobunny.co.uk

Goad Joinery Ltd

All aspects of joinery including:

Renovation, Doors, Windows, Sky Lights, Flooring
Extensions, Fitted Kitchens, Fencing
Barge Boards & Soffits, Garage Doors
Loft Conversions etc

Trusted Time-Served Joiner

Call for a free estimate, no obligation

Burton in Kendal 01524 782939

freedom DRIVING SCHOOL

Pass first time
or receive free lessons until you pass

Call Richard on

07990 506431

Holme Works Handyman

Nobody likes doing homework so let
Holme Works do it for you!

All Household & Garden work undertaken:

Household: Painting - internal & external work;
Gutters - cleaning, painting & repairs;
Pressure washing - walls, pathways, paving, decks
& fencing;
General household repairs (non structural); Flat-
pack assembly.

Give Neil a call on 01524 782177 / 07712 475863

PURE ESSENCE

beauty spa

SKIN EXPERTS

Open to Non Members

Specialising in Laser Hair Removal, Caci Non
Surgical Facial, Pigmentation and Red Vein
Removal. Massage, and Nails

Please call 01524 735240 for booking

South Lakeland Leisure Village

HALE GARAGE CO



(Practical Automobile Engineers)

Established over 70 years

Main A6 Road, Hale

New & Used Car Sales Service & Repairs

Full Dealer Computerised Diagnostics Equipment

Petrol & Diesel MOT Testing. Body Repairs, Tyres

Batteries, Exhausts & all your Motoring needs

Free collection or loan car service

 **015395 62173 / 62839**

D.A.BELL LTD

Plumbing & Heating Engineer
Gas, Oil & LPG Installation, Repair,
Servicing & Maintenance

Bathrooms Fitted & Tiling

Gas Safe Reg No 92436
OFTEC Reg No C3883

Tel: 01524 781973

Mob: 07831 231492

Tammi Upton (formerly Birkbeck)



Hairdressing



Private, Luxury Salon based in Over Kellet

33 years' experience, specialising in cutting and colour

Also, Tropic Skin Care ambassador

Appointments only by telephone, please

07766007779

DAVID LEWTHWAITE

Painter and Decorator

Over 40 years' experience
No radios, no rollers, no fuss
Fully insured

8 Hollowrayne, B-in-K

01524 782512



THE FAIRBANK SOCIETY

Fairbank, Kirkby Lonsdale. LA6 2BD
Supported Living for
Older, Independent, People

For information contact
Janet Farrington - 015242 71077
manager@fairbanksociety.com
www.fairbanksociety.com

MICHAEL PLATT

TRADING AS



Quality Plumbing & Gas Services

-
07850 472780

01524 782390

Curwen Woods

1 bed holiday cottage

available for long and short
lets year round.



Firewood for sale, hard and softwood,
firelighters and kindling, locally sourced,
delivery and collection available from/to
LA6 and beyond.

07850872282 (holiday cottage enquiries)

THE BAY BLIND COMPANY

PLEATED ROLLER ROMAN
VENETIAN VERTICAL
VELUX

Each blind is measured and manufactured
individually, and fitted personally
Commercial and Domestic : Evenings and Weekends
David or Sandra

Phone/Fax 01524 781149 Mobile 07957 343071

2 Boon Town Burton Carnforth Lancs

Carpets & Hard Flooring Supplied & Expertly Fitted by

Jonny Holmes

07796 010141



***Please call for advice and a
convenient
choose at home service.***



Septic Tank Specialists

015242 72842

High pressure drain jetting
Septic tank emptying
CCTV surveying
Installations
Treatment plant servicing
Home buyers & sellers
surveys

www.parkstanks.co.uk info@parkstanks.co.uk

DALTON WOODLAND BURIAL GROUND

Natural Woodland Burial Ground

"Return to the Earth, naturally"

www.daltonwoodlandburial.co.uk

Burton-in-Kendal: 01524 782442

Jan's Pantry

Mobile Outside Catering for all Occasions
Barbecues • Weddings • Christenings • Parties etc.

A fully qualified cook at your fingertips



For enquiries call
**01524 781904 or
07855 202124**

*Your Celebration Cakes
can be done too*



Dalton Hall Business Centre Burton-in-Kendal

Meeting Room Hire

All Enquiries 07881 930139

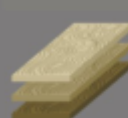
offices@daltonhall.co.uk

<http://www.daltonhall.co.uk>

Hartland House (Abbeyfield) Milnthorpe - Residential Care Home

For more info please ring: 015395 62251 or
email: abbeyfield@hartlandhouse.co.uk
www.hartlandhouse.co.uk

31 en-suite rooms
24 hour staff cover
Home Cooked Meals
Entertainment &
Activities



RJM JOINERY
AND INSTALLATIONS LTD
EST. 2002
BUILDING • CONVERSIONS • RENOVATIONS

Specialists in loft conversions & dormers

Extensions & traditional roofing work

All types of building projects

Phone: 07896 425460

Web: www.rjmjoineryandbuilding.co.uk

Suffering from an injury, pain or discomfort?

The **Compete Physio** difference:

Highest rated physio in the area, longer
appointment times, commitment to staff
training and excellent communication.

Book online today at:

www.competephysio.co.uk

or call us at 07726904630



NEIL HAWES

CARPENTRY AND JOINERY SERVICES



ESTABLISHED 1994





ALL JOINERY, CARPENTRY AND GLAZING
WORK UNDERTAKEN

OFFICE 01524 749277

MOBILE 07790 736605



Mike Hurtley

 : 07858506177
 : mhyelectrical@gmail.com
 : mhyelectrical.com
 : mhyelectrical

Testing & inspection
Part & full rewires
Replacement light fittings
Replacement sockets & showers
Fuse Board replacements
Maintenance & fault finding
Free no obligation quotes



Do you run a company offering services to residents of Burton? If so, would you like to advertise with us? If you get this newsletter then you know it is distributed each month (except Jan) to all households in Burton, Dalton and Clawthorpe.

Our rates are very reasonable, starting at £66 for a 1/8th page advert running for 11 editions (we produce 11 editions each calendar year). You do not have to run your advertisement for a full year but just for those months that are most appropriate to your business. If you do take a full year's subscription then, as an introductory offer, we will double the size of your advert for the first month.

Please contact the editors on burtonnewseditor@gmail.com for advice and information.

DALTON self storage

- Indoor containerised storage
- Easy Access
- Well Lit
- Secure

Tel. 01524 782442

Burton-in-Kendal

Calendar of Events

DECEMBER

Art Group - meets most Fridays 9.30am to 12 Noon BMH (Visitors Welcome)

Knit & Natter Group - meets each Wednesday 6.30pm to 8.30pm BMH (£2.00)

Christmas Bingo Nights: Thur 5th, Fri 13th, Fri 20th - BMH -Doors open 6.30pm

Mon 2nd - Coffee morning and book drop 10am to 11am BMH

Mon 9th - Craft Group 1.30pm to 4pm BMH (visitors welcome)

Thur 12th - WI Monthly Meeting (Visitors Welcome)

Sat 14th - Burton Singers 'Songs for a Winter Night' - 7.30pm BMH

Mon 16th - Local History Society Indoor Meeting 7.30pm BMH (Visitors Welcome)

'John Weston of Enyeat, Endmoor' with Peter Williams

Sat 21st - Mid Month Coffee Morning 10am to 11.30am - BMH

JANUARY

Art Group (A&C Society)weekly at BMH, most Fridays 9.30am to 12.00 Noon.
(Visitors Welcome)

Knit & Natter Group - meets each Wednesday 6.30pm to 8.30pm BMH (£2.00)

Mon 6th - Coffee morning and book drop 10am to 11am BMH

Mon 13th - Craft Group monthly meeting at BMH 1.30-4pm (visitors welcome)

Mon 20th Local History Society Indoor Meeting 7.30pm BMH (visitors welcome)

"Samuel H.Haslam of Heversham, Gentleman & Naturalist."

Prof.Ian D.Hodkinson.

Sat 25th - Art & Craft Society ,Workshop BMH ,10.00am to 4.00pm,
'Creating Pictures using Graphite & Ink 'with Helen Thompson (members only)